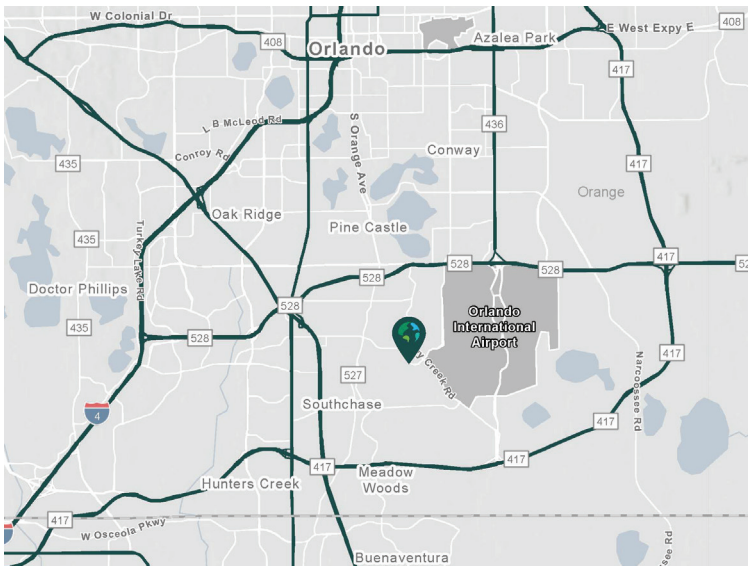


# 42,128 SF

**2663 Tradeport Drive, Suite 800  
Orlando, FL 32824**

Prologis Park at AIPO



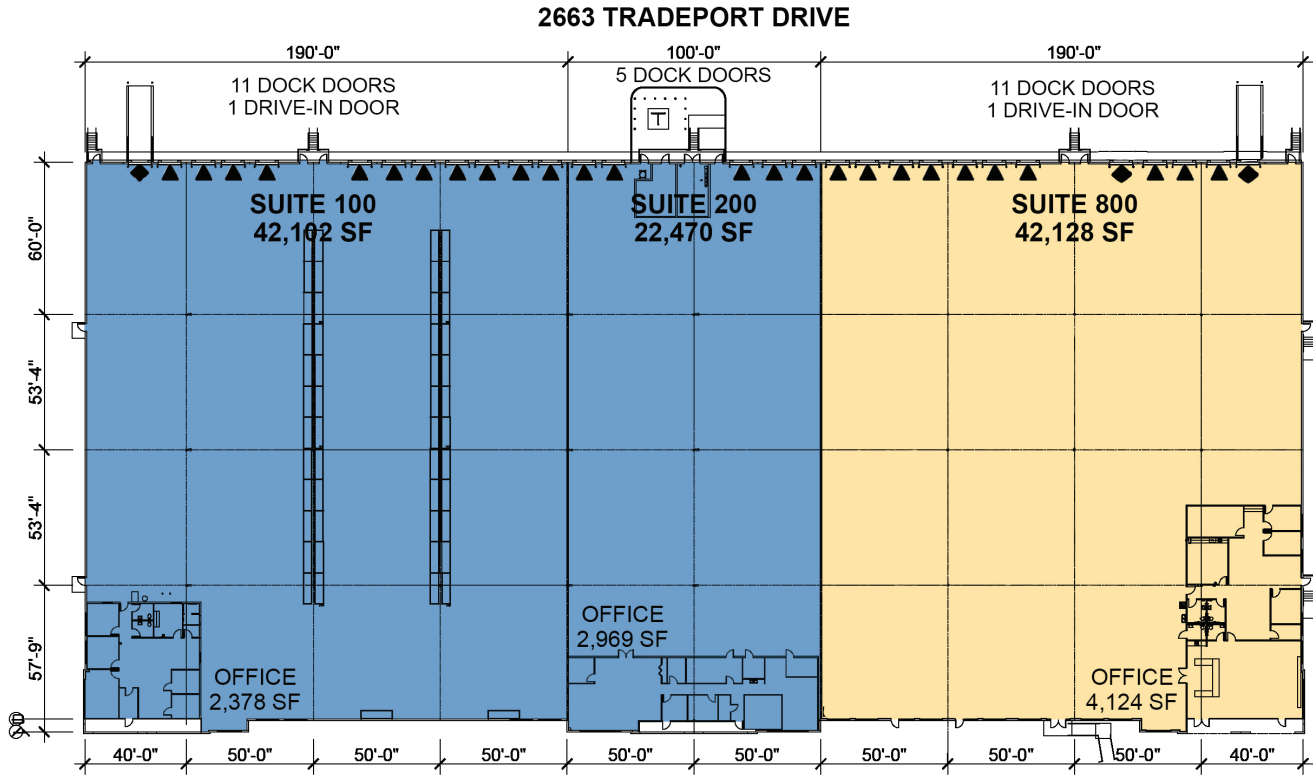
- Prime Airport South location with immediate access to SR-528 (Beachline Expressway).
- Less than 5 miles from Orlando International Airport (MCO) for air-cargo efficiency.
- Quick connectivity to SR-417 and Florida's Turnpike supporting statewide distribution.

## Property Features

Available Space	42,128 SF
Office SF	4,124 SF
Clear Height	28'
Column Spacing	53' x 50'
Dock Doors	11
Drive-in Doors	1
Truck Court	170'
Car Parking Spaces	1.02/1,000 SF
Electrical Service	800 amps
Sprinkler	ESFR
Lighting	Flourescent



Unlock the full potential of your warehouse with one strategic, single-source partner.



**LEGEND**

- AVAILABLE
- LEASED
- DOCK DOOR
- DRIVE-IN DOOR



**AIPO**  
**Paul Sabga**  
 psabga@aipo.net  
 ph +1 407 927 3981

**Prologis**  
**John Kruszewski**  
 jkruszewski@prologis.com  
 ph +1 407 244 7109

PROLOGIS  
AIPO 2006

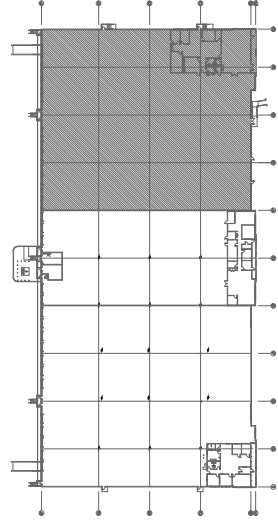
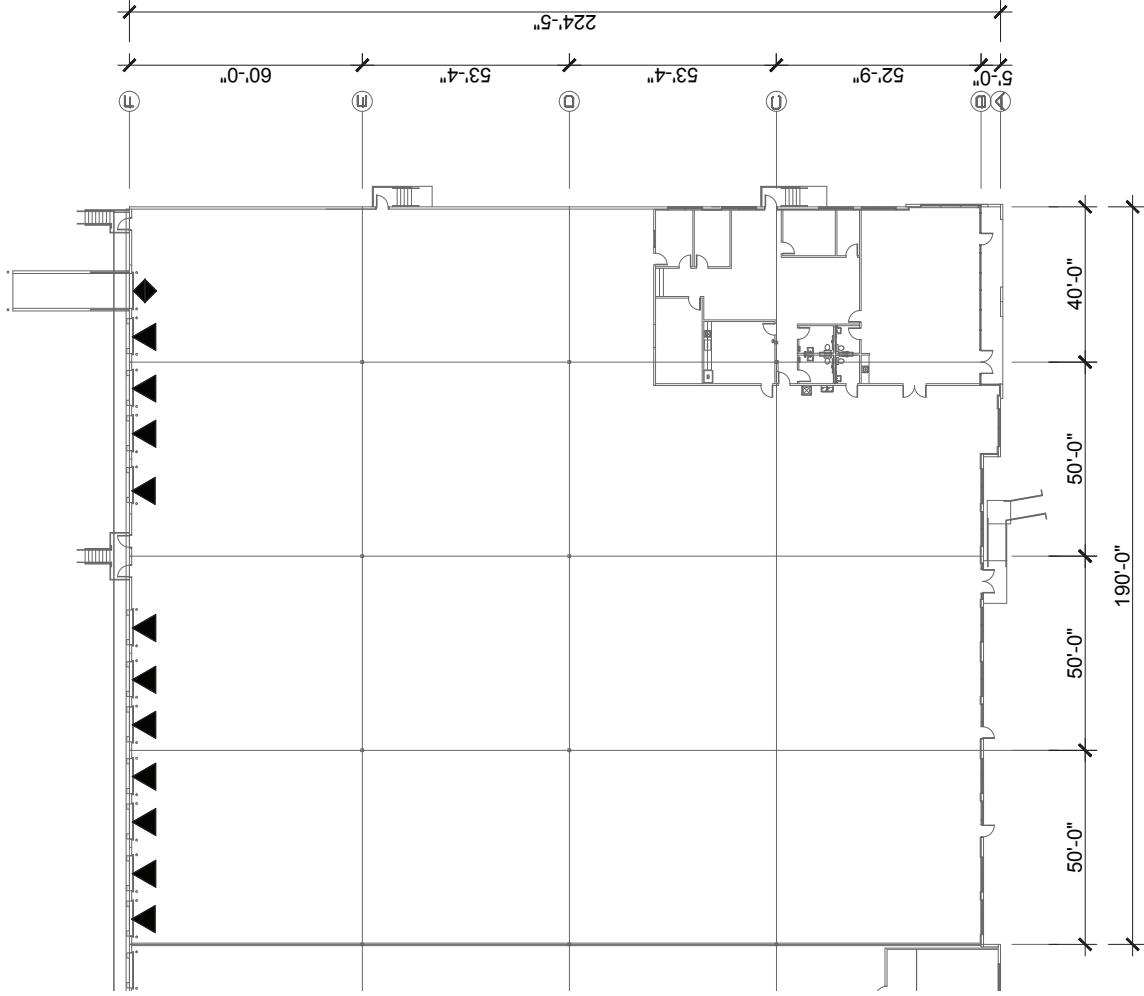
2663  
TRADEPORT DRIVE  
ORLANDO, FLORIDA

BUILDING DATA

SUITE: 800  
OFFICE: 4,124 S.F.  
WAREHOUSE: 38,004 S.F.  
TOTAL AREA: 42,128 S.F.  
FOOTPRINT: 42,128 S.F.  
CLEAR HEIGHT: 28 FEET  
DOCK DOORS: 11  
DRIVE-IN DOORS: 1  
TYPICAL BAY: 50'-0" x 53'-4"



JUNE 9, 2026



KEY PLAN

PROLOGIS  
AIPO 2006

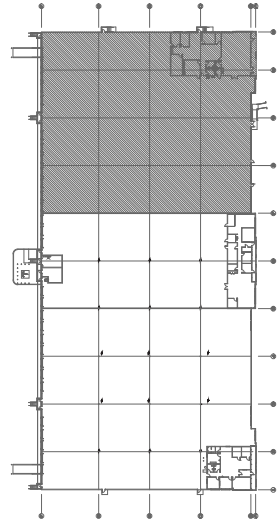
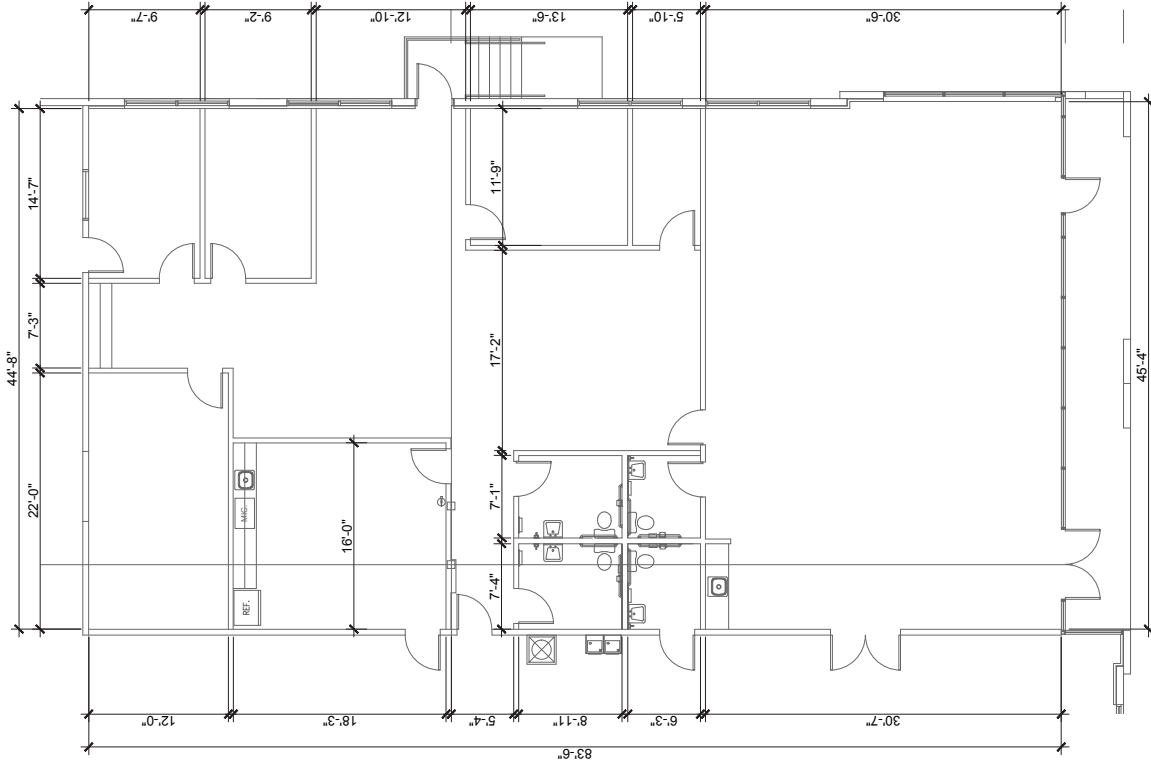
2663  
TRADEPORT DRIVE  
ORLANDO, FLORIDA

BUILDING DATA

SUITE: 800  
OFFICE: 4,124 S.F.  
WAREHOUSE: 38,004 S.F.  
TOTAL AREA: 42,128 S.F.  
FOOTPRINT: 42,128 S.F.  
CLEAR HEIGHT: 28 FEET  
DOCK DOORS: 11  
DRIVE-IN DOORS: 1  
TYPICAL BAY: 50'-0" x 53'-4"



JUNE 9, 2026



KEY PLAN