

VANTAGE PLAZA

FOR LEASE



PROPERTY DETAILS

1935 E. Vine St., Murray, UT 84121

- **\$21.50/RSF Full Service**
- Multiple suites available:
 - » Suite 180: 1,650 RSF
 - » Suite 360: 3,896 RSF
 - » Suite 420: 3,187 RSF
 - » Suite 450: 2,932 RSF
- Available 4/1,000 parking with additional shared parking
- Numerous amenities nearby
- Less than one minute from I-215
- Professional on-site management
- Utopia and fiber available
- Crown signage available for an additional \$500/month



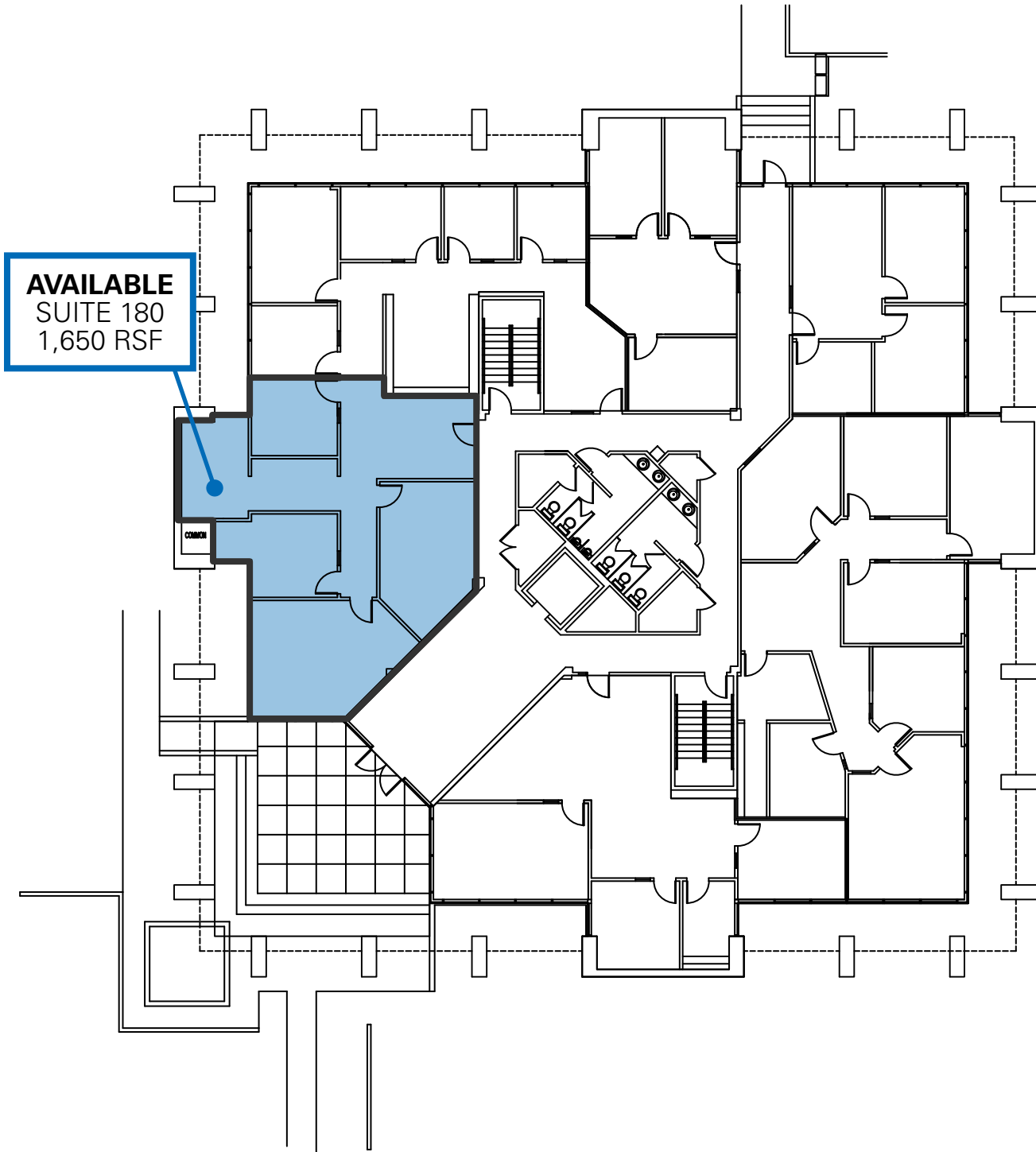
COLLIN PERKINS
cperkins@newmarkmw.com
direct 801.604.0064
[View Profile](#)

SKYE GALLEY
sgalley@newmarkmw.com
direct 801.971.3602
[View Profile](#)

**FULL SERVICE
COMMERCIAL REAL ESTATE**
312 East South Temple
Salt Lake City, Utah 84111
Office 801.456.8800
www.newmarkmw.com

VANTAGE PLAZA

FIRST FLOOR



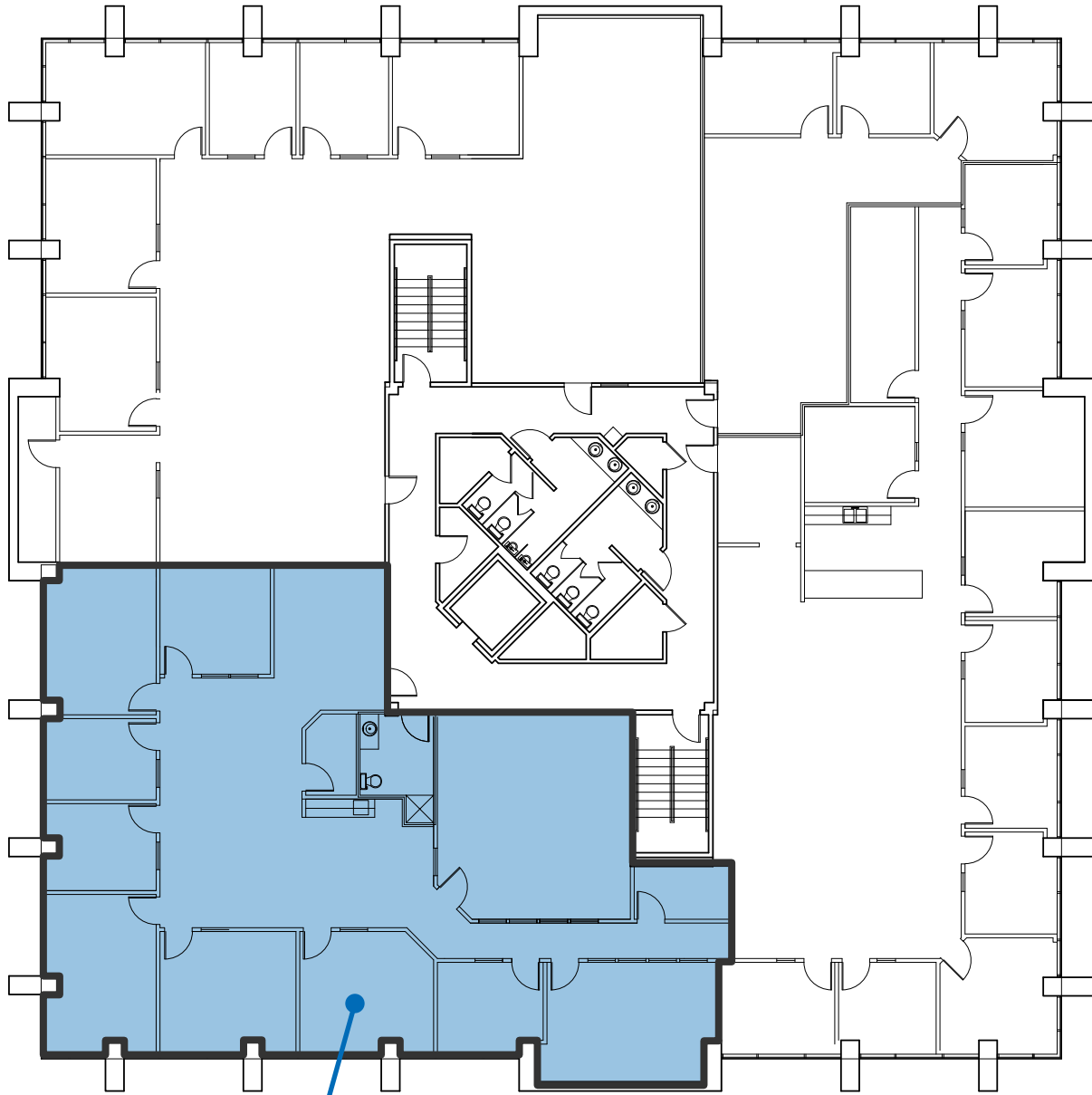
COLLIN PERKINS
cperkins@newmarkmw.com
direct 801.604.0064
[View Profile](#)

SKYE GALLEY
sgalley@newmarkmw.com
direct 801.971.3602
[View Profile](#)

**FULL SERVICE
COMMERCIAL REAL ESTATE**
312 East South Temple
Salt Lake City, Utah 84111
Office 801.456.8800
www.newmarkmw.com

VANTAGE PLAZA

THIRD FLOOR



AVAILABLE
SUITE 360
3,896 RSF



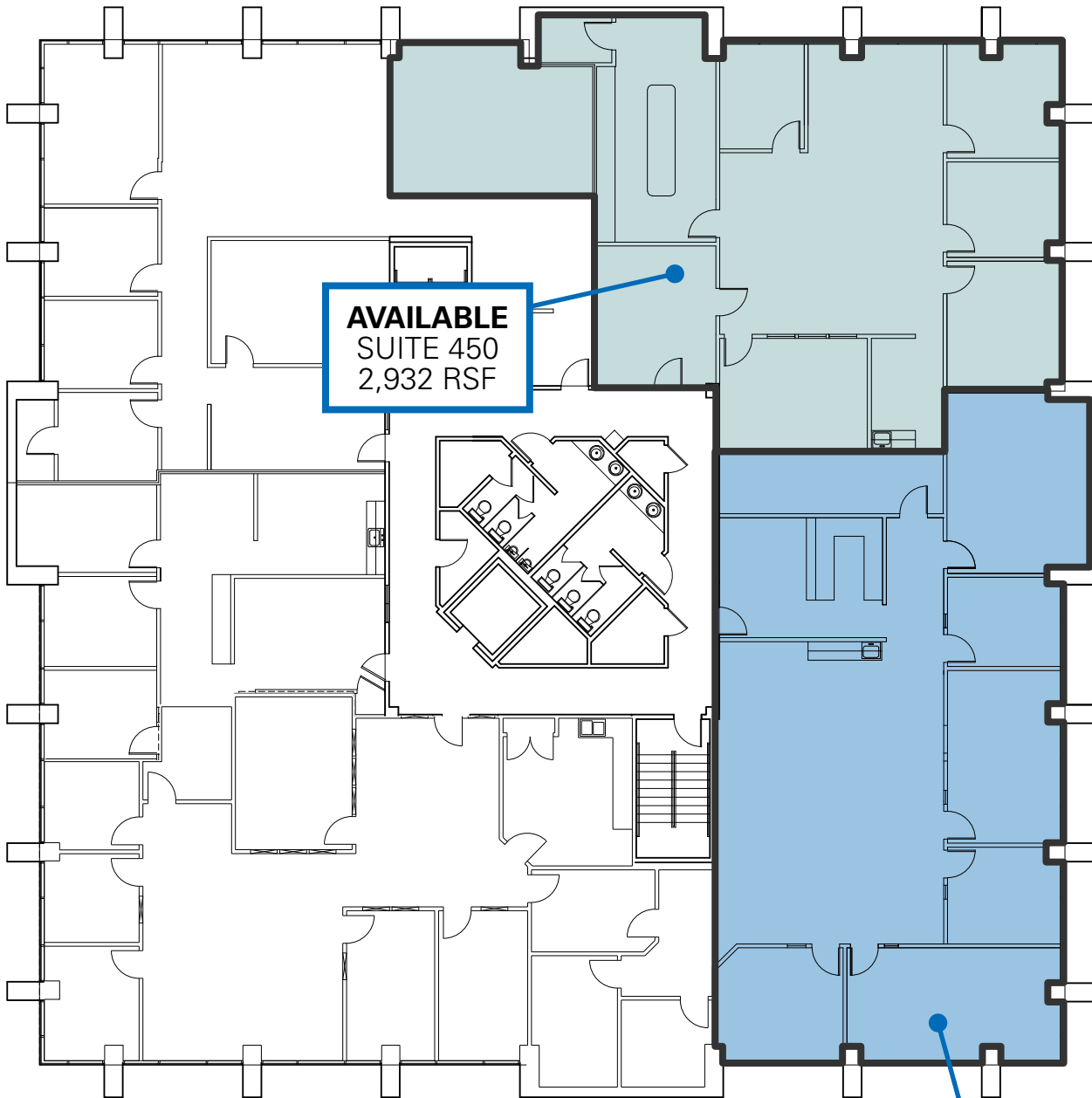
COLLIN PERKINS
cperkins@newmarkmw.com
direct 801.604.0064
[View Profile](#)

SKYE GALLEY
sgalley@newmarkmw.com
direct 801.971.3602
[View Profile](#)

**FULL SERVICE
COMMERCIAL REAL ESTATE**
312 East South Temple
Salt Lake City, Utah 84111
Office 801.456.8800
www.newmarkmw.com

VANTAGE PLAZA

FOURTH FLOOR



AVAILABLE
SUITE 450
2,932 RSF

AVAILABLE
SUITE 420
3,187 RSF



COLLIN PERKINS
cperkins@newmarkmw.com
direct 801.604.0064
[View Profile](#)

SKYE GALLEY
sgalley@newmarkmw.com
direct 801.971.3602
[View Profile](#)

**FULL SERVICE
COMMERCIAL REAL ESTATE**
312 East South Temple
Salt Lake City, Utah 84111
Office 801.456.8800
www.newmarkmw.com

VANTAGE PLAZA

INTERIOR PHOTOS

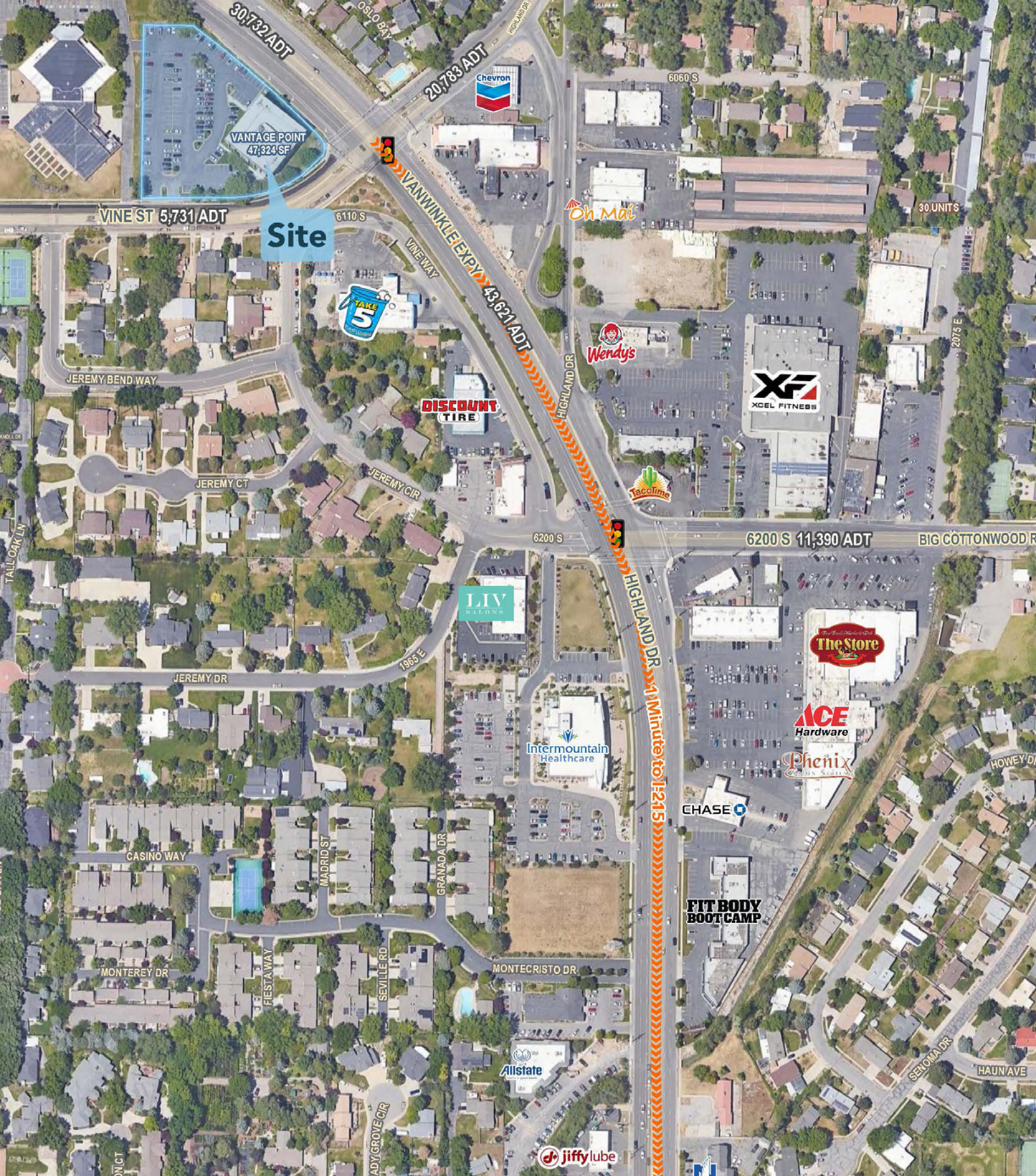


NEWMARK
MOUNTAIN WEST

COLLIN PERKINS
cperkins@newmarkmw.com
direct 801.604.0064
[View Profile](#)

SKYE GALLEY
sgalley@newmarkmw.com
direct 801.971.3602
[View Profile](#)

**FULL SERVICE
COMMERCIAL REAL ESTATE**
312 East South Temple
Salt Lake City, Utah 84111
Office 801.456.8800
www.newmarkmw.com



Site

NEWMARK
 **MOUNTAIN WEST**

COLLIN PERKINS
 cperkins@newmarkmw.com
 direct 801.604.0064
[View Profile](#)

SKYE GALLEY
 sgalley@newmarkmw.com
 direct 801.971.3602
[View Profile](#)

**FULL SERVICE
 COMMERCIAL REAL ESTATE**
 312 East South Temple
 Salt Lake City, Utah 84111
 Office 801.456.8800
 www.newmarkmw.com