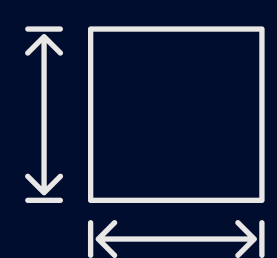


# OFFICE FOR LEASE

2300 DEAN WAY, SUITE 110, SOUTHLAKE, TX



3,540 SF



Move in Ready



Building Signage Available



Easy Access To HWY 114, 121, & 26



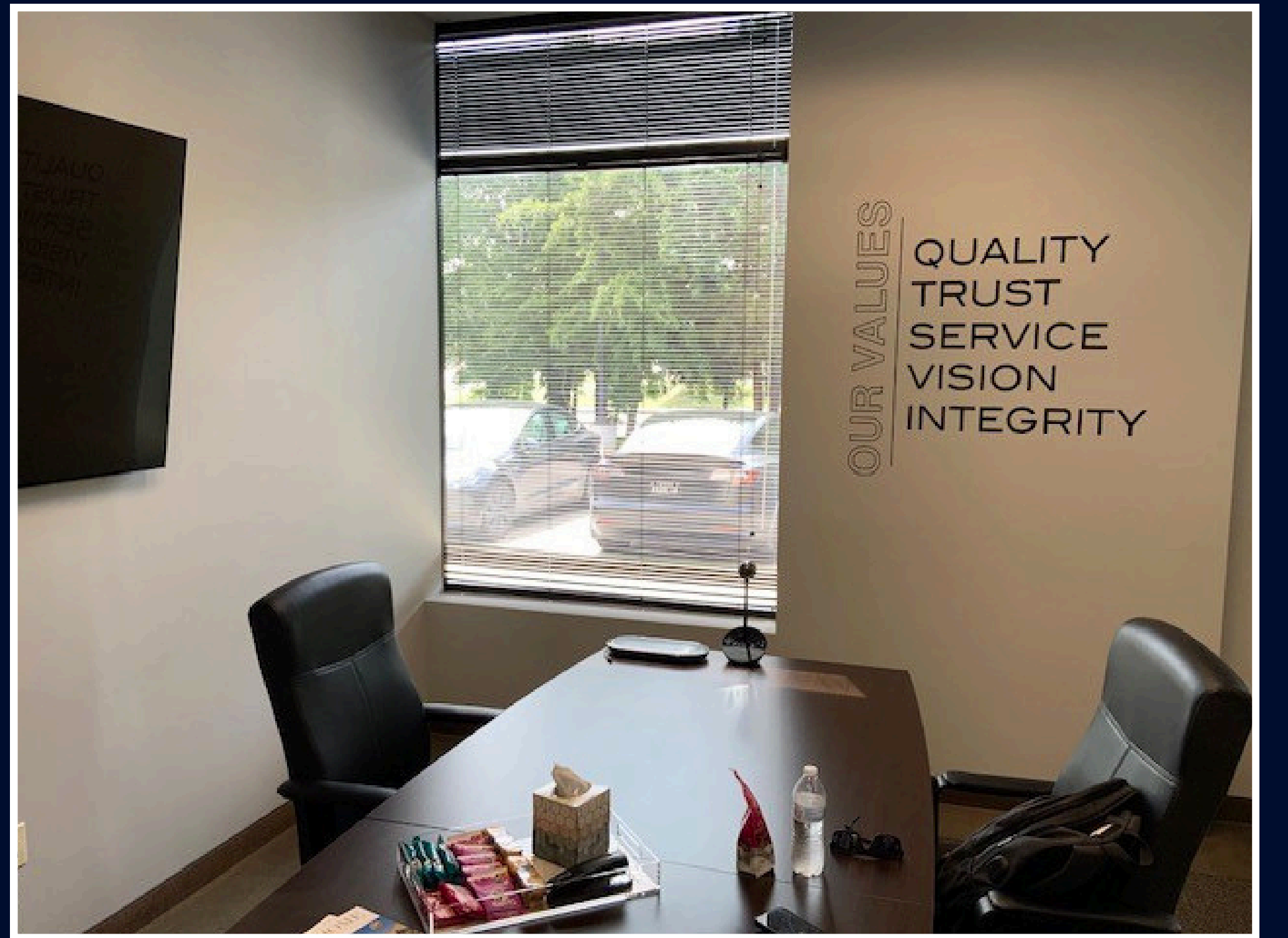
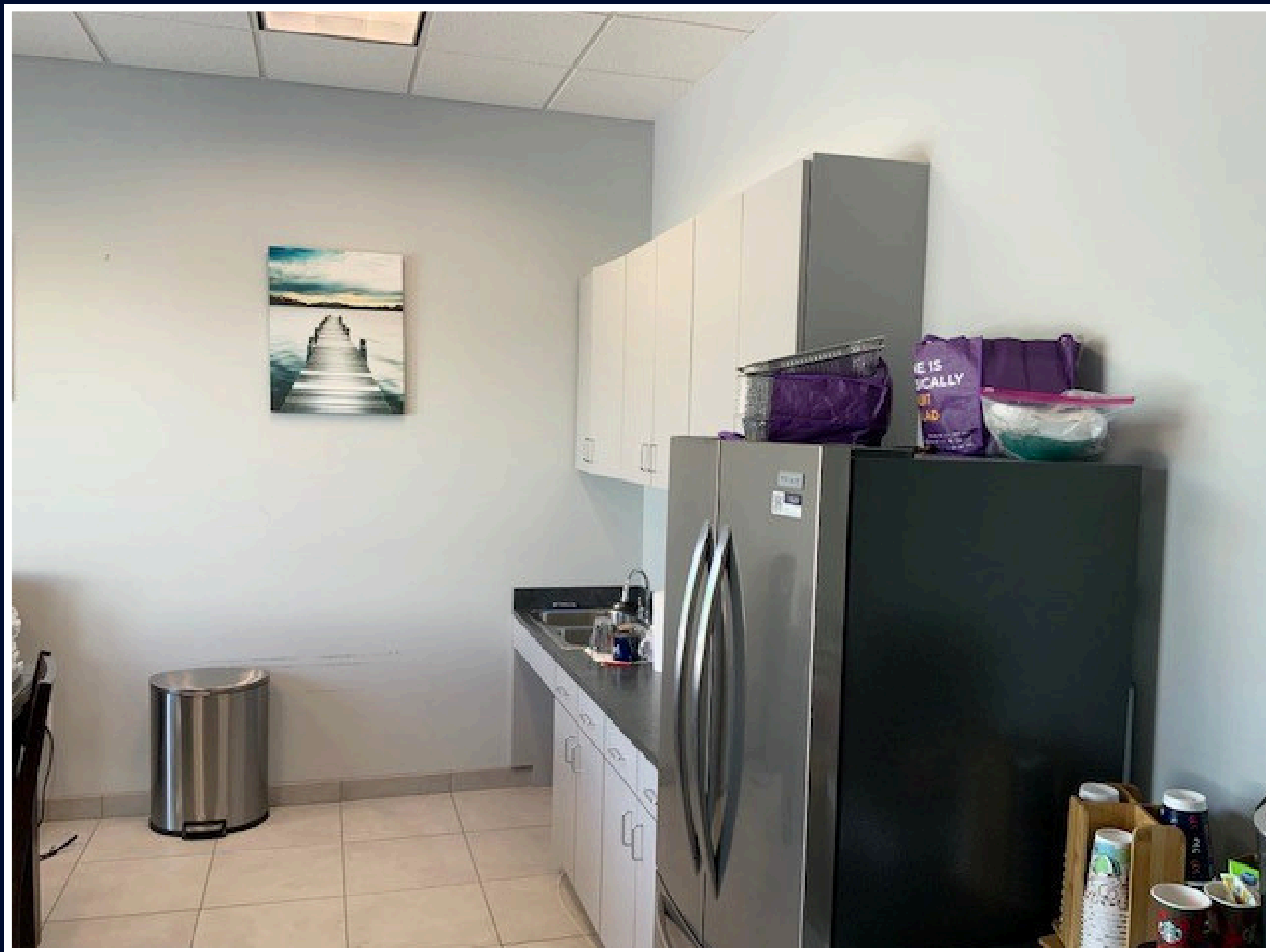
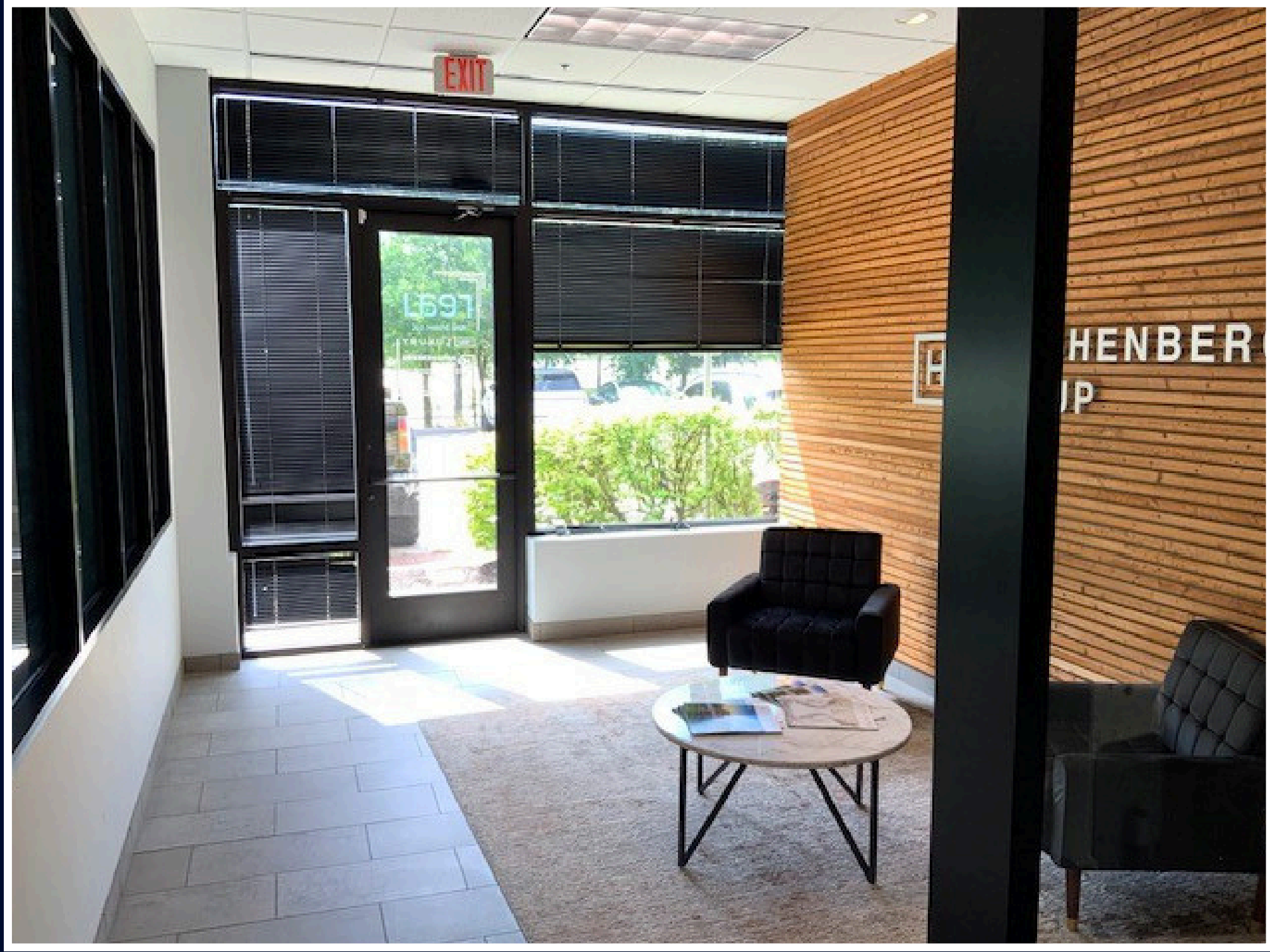
Minutes From DFW Airport

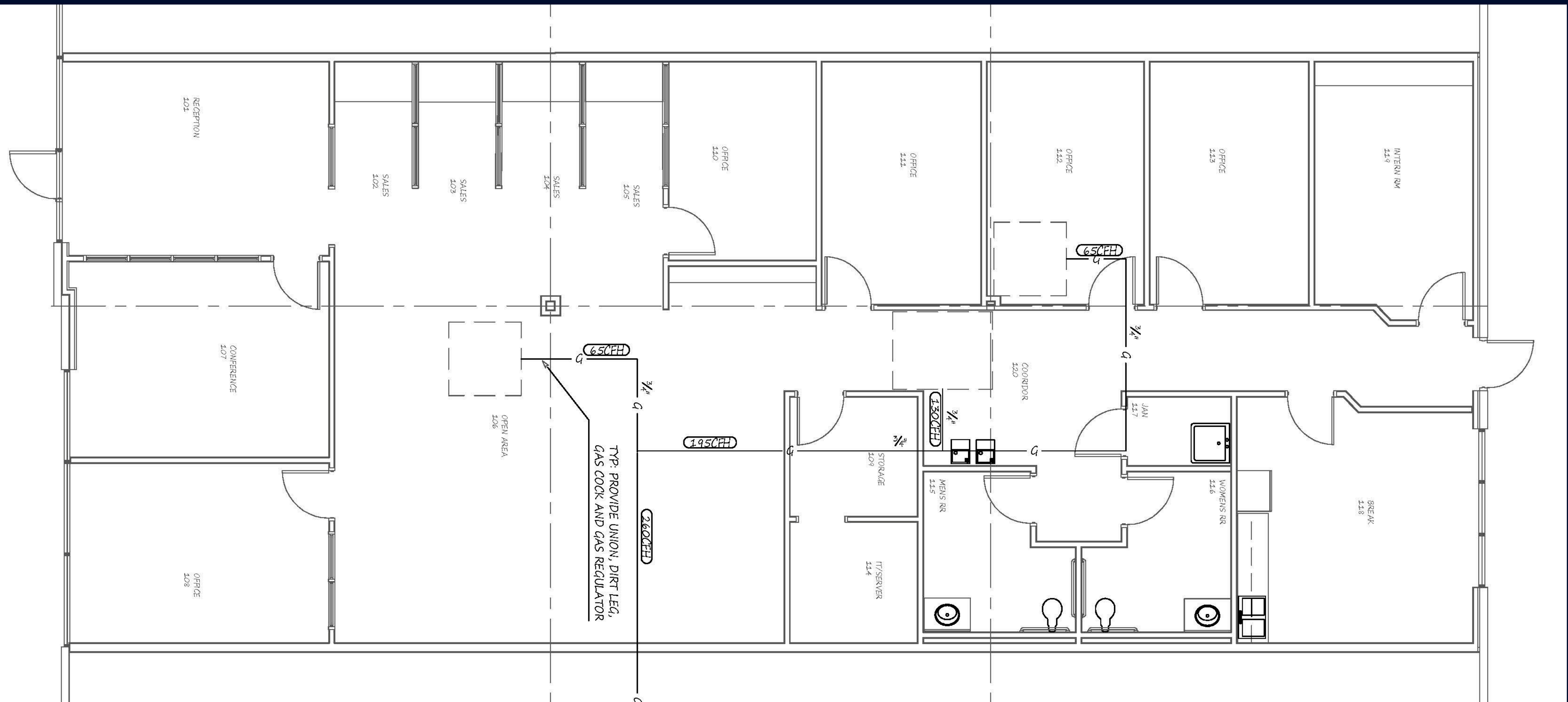


Near Restaurants, hotels and shopping



**Steve Shrum**  
817-881-3837  
shrum@glaciercommercial.com





# DRAGON STADIUM



**Southlake is in the northeast portion of the great State of Texas, midway between Dallas and Fort Worth, and only 10 minutes to Arlington, home of the Dallas Cowboys AT&T Stadium, Texas Rangers Stadium and Six Flags Over Texas. In the heart of the fastest-growing region in the United States, with easy access to Dallas Fort Worth International Airport, Dallas Love Field Airport, and Fort Worth Alliance Airport, Southlake offers an ideal location for businesses and travelers in North Central Texas.**



