

Industrial Building Pittsfield Twp

4183 E Morgan, Ypsilanti, MI 48197



FOR SALE & LEASE



OFFERING SUMMARY

Sale Price:	\$155.00 / SF
Lease Rate:	\$15.00 SF/yr Plus Utilities
Available SF:	65,400 SF
Lot Size:	8.01 Acres
Year Built:	2026
Zoning:	I (General Industrial)

PROPERTY HIGHLIGHTS

- Building A - 2 suites of 12,150 SF each (Total building 24,300 SF)
- Building B - 4 suites of 10,275 SF each (Total building 41,100 SF)
- Each suite has a 14'x14' grade level motor operated overhead door
- Building A and Building B suites 2 & 3 have an 8'x10' overhead door at truckwell
- Fire sprinklers throughout
- Shop/warehouse ceiling 20+ feet
- Public sewer and water
- 400 amp, 480/277v, 3 phase electric
- I-General Industrial zoning district is intended for light manufacturing, other limited industrial, wholesale and warehousing uses
- Pittsfield Township - Easy access to 1-94 & US-23 using class A roads
- Custom build to suit

Jeff Evans

734.926.0222

jeffevans@swishercommercial.com

Industrial Building Pittsfield Twp

4183 E Morgan, Ypsilanti, MI 48197



For Sale & Lease



Jeff Evans

734.926.0222

jeffevans@swishercommercial.com

PROPERTY DESCRIPTION

Leasing to commence Spring of 2026. There are two industrial buildings to be built on the parcel that are offered for both sale or lease.

Building A totals 24,300 SF, divided into two suites of 12,150 SF each, allowing for single or multi-tenant occupancy. Each suite is equipped with a 14'x14' motor-operated grade-level overhead door and an additional 8'x10' overhead door at the truckwell and high shop/warehouse ceiling of over 20 feet.

The building is fully outfitted with fire sprinklers for safety and compliance. Utilities include public sewer and water, and a robust 400 amp, 480/277v, 3-phase electric service to accommodate heavy-duty industrial equipment.

Building B measures 41,100 SF and can be divided into up to four suites measuring 10,275 SF each, with an overhead door for each. Suites 2 & 3 each have an additional 8'x10' overhead door at the truckwell. Building B has high shop/warehouse ceiling of over 20 feet, fire sprinklers, public sewer and water, and 400 amp, 480/277v, 3-phase electric service.

Sale price for either building is \$155/SF.

Zoned I (General Industrial), the property is suitable for light manufacturing, limited industrial operations, as well as wholesale and warehousing activities. Its strategic location provides easy access to I-94 & US-23 using class A roads, ensuring seamless transport and logistics management.

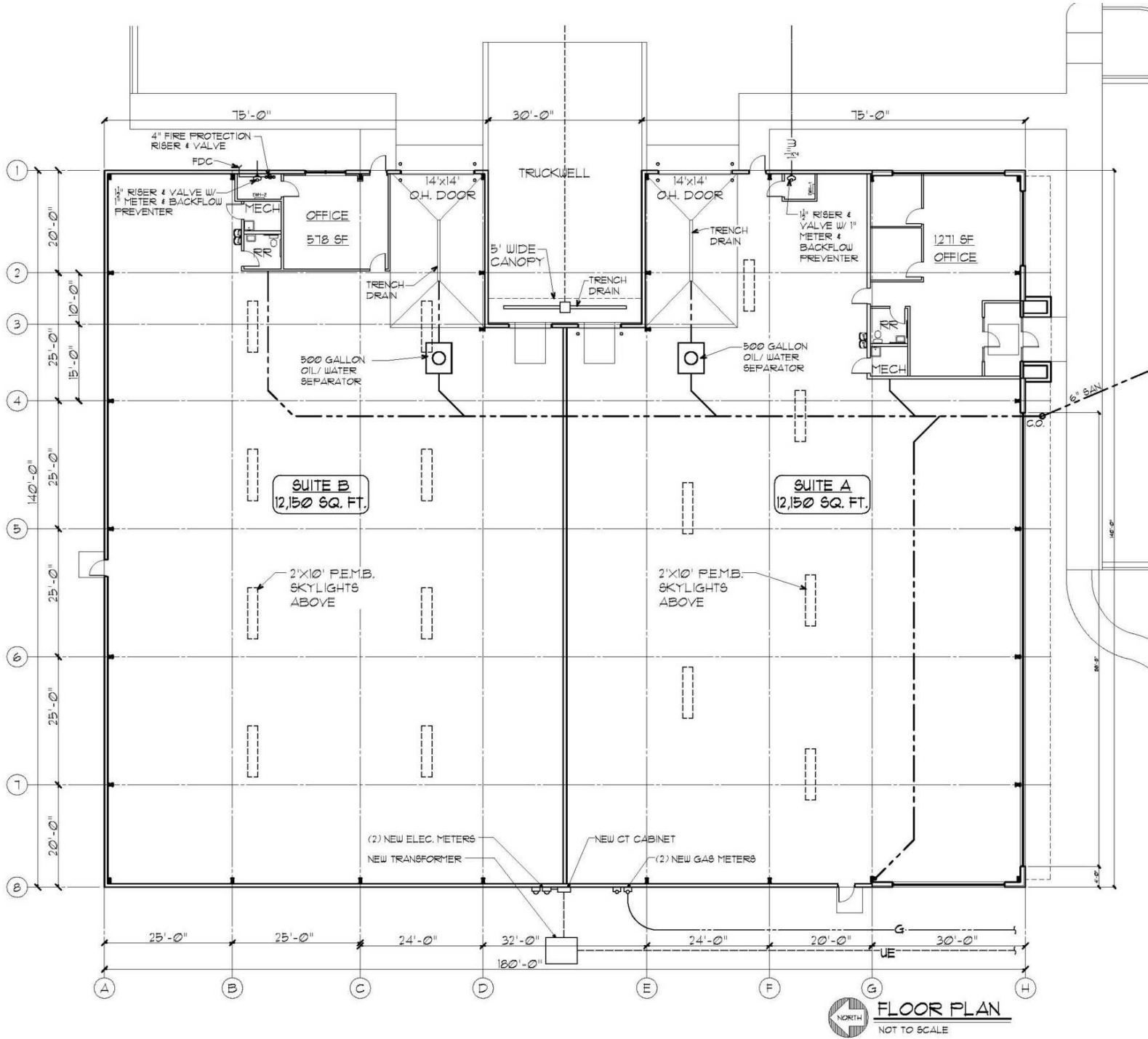
The offering includes custom build-to-suit options, allowing businesses to tailor the space to their specific needs.

Industrial Building Pittsfield Twp

4183 E Morgan, Ypsilanti, MI 48197



For Sale & Lease



Jeff Evans

734.926.0222

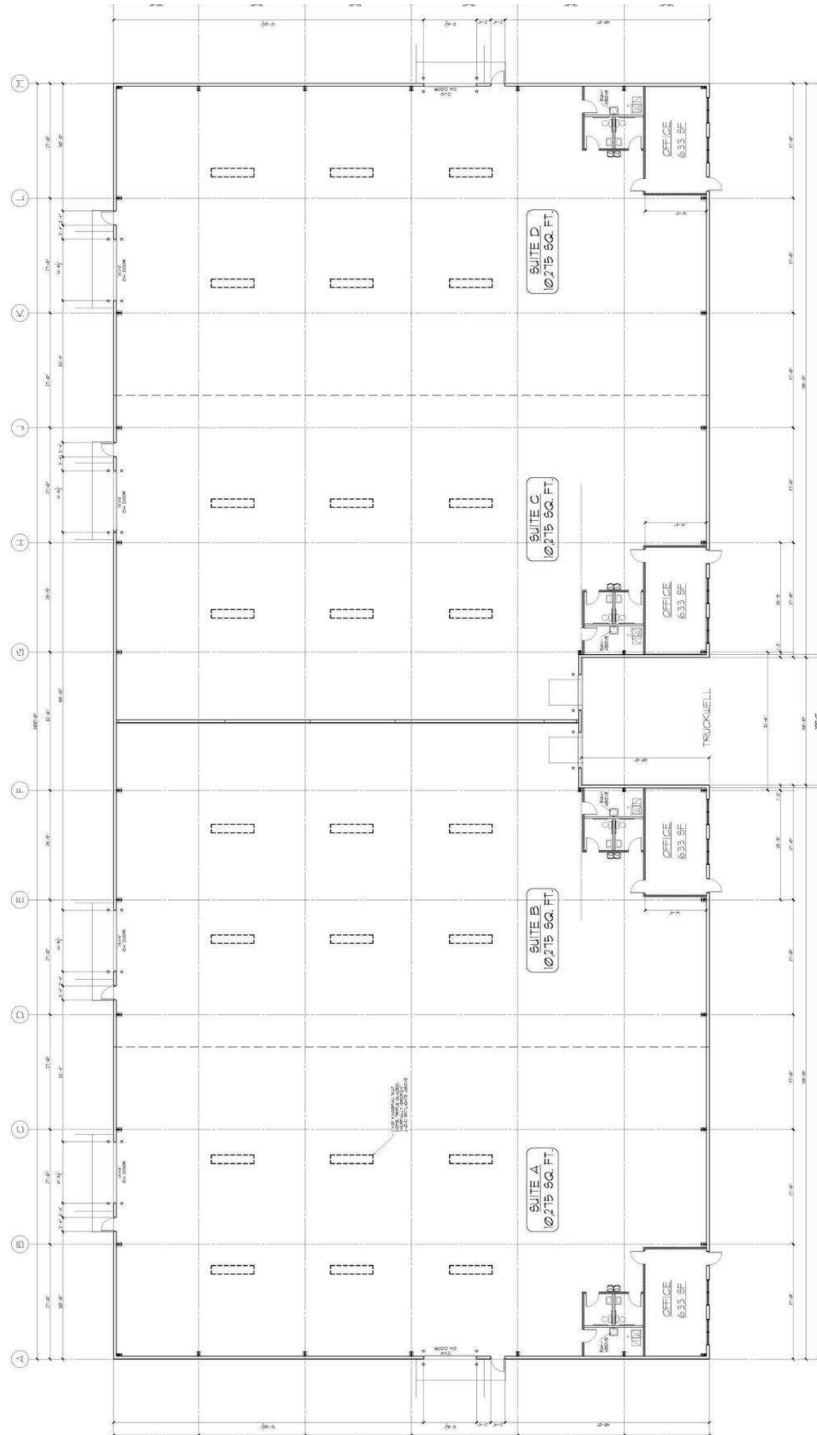
jeffevans@swishercommercial.com

Industrial Building Pittsfield Twp

4183 E Morgan, Ypsilanti, MI 48197



For Sale & Lease



Jeff Evans

734.926.0222

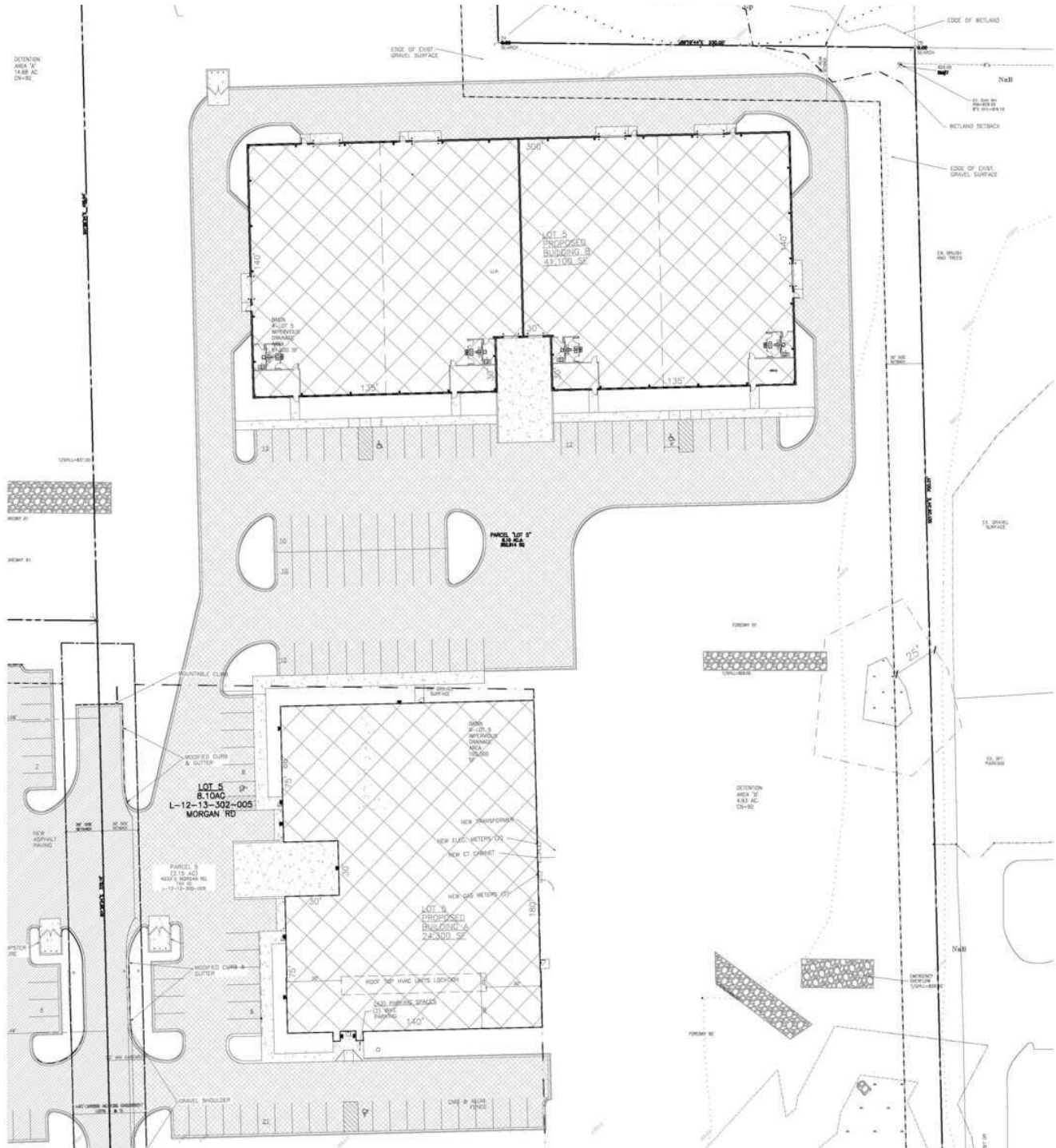
jeffevans@swishercommercial.com

Industrial Building Pittsfield Twp

4183 E Morgan, Ypsilanti, MI 48197



For Sale & Lease



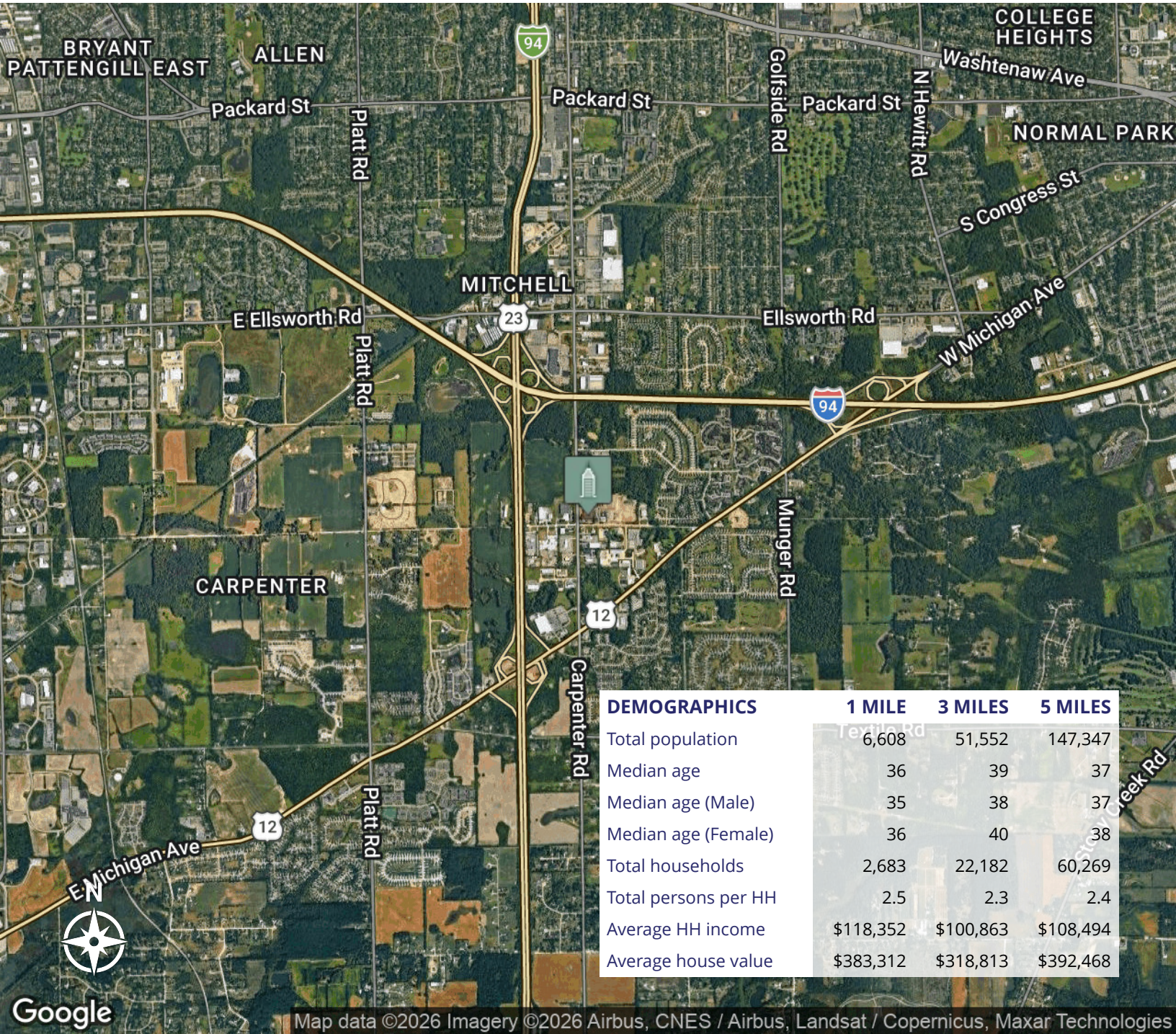
Jeff Evans
734.926.0222
jeffevans@swishercommercial.com

Industrial Building Pittsfield Twp

4183 E Morgan, Ypsilanti, MI 48197



For Sale & Lease



Jeff Evans

734.926.0222

jeffevans@swishercommercial.com