



SPRINGFIELD HOUSE

WATER LANE | WILMSLOW | SK9 5BG



PROFESSIONAL WORKSPACE IN THE HEART OF WILMSLOW

Springfield House is a prominent office, located on Water Lane in the heart of the desirable town of Wilmslow.

Boasting a modern reception area, secure swipe-card entry system, building manager and on-site car park, Springfield House is the ideal location for new and growing businesses looking to reposition themselves within South Manchester.

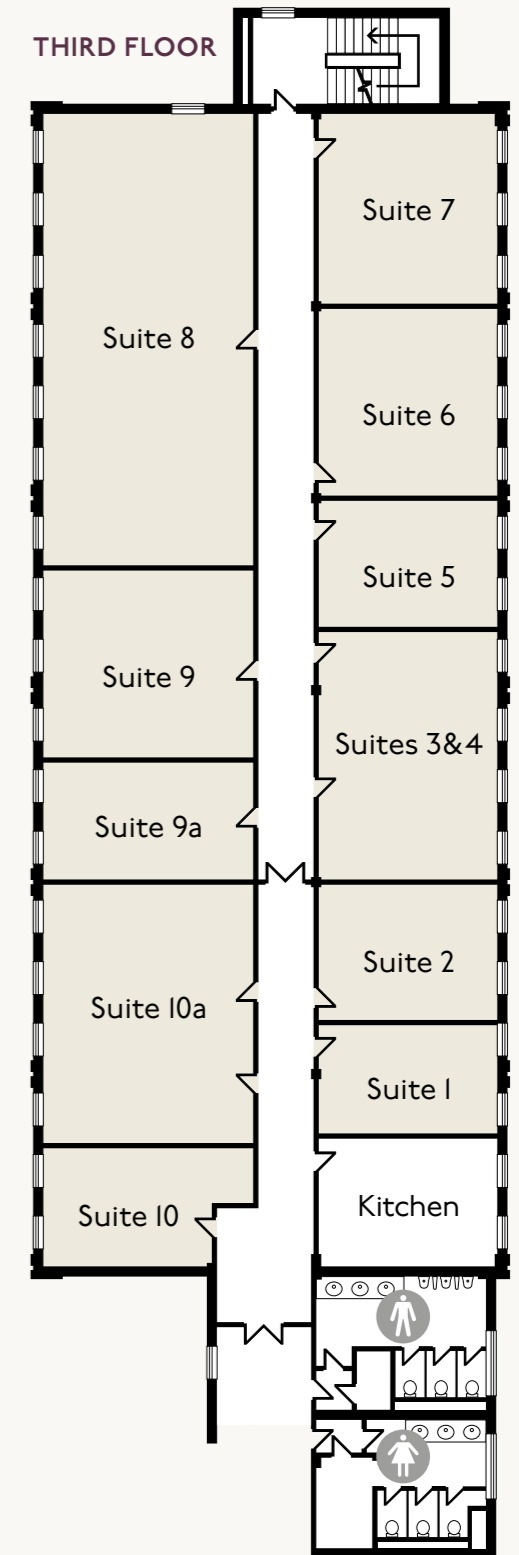
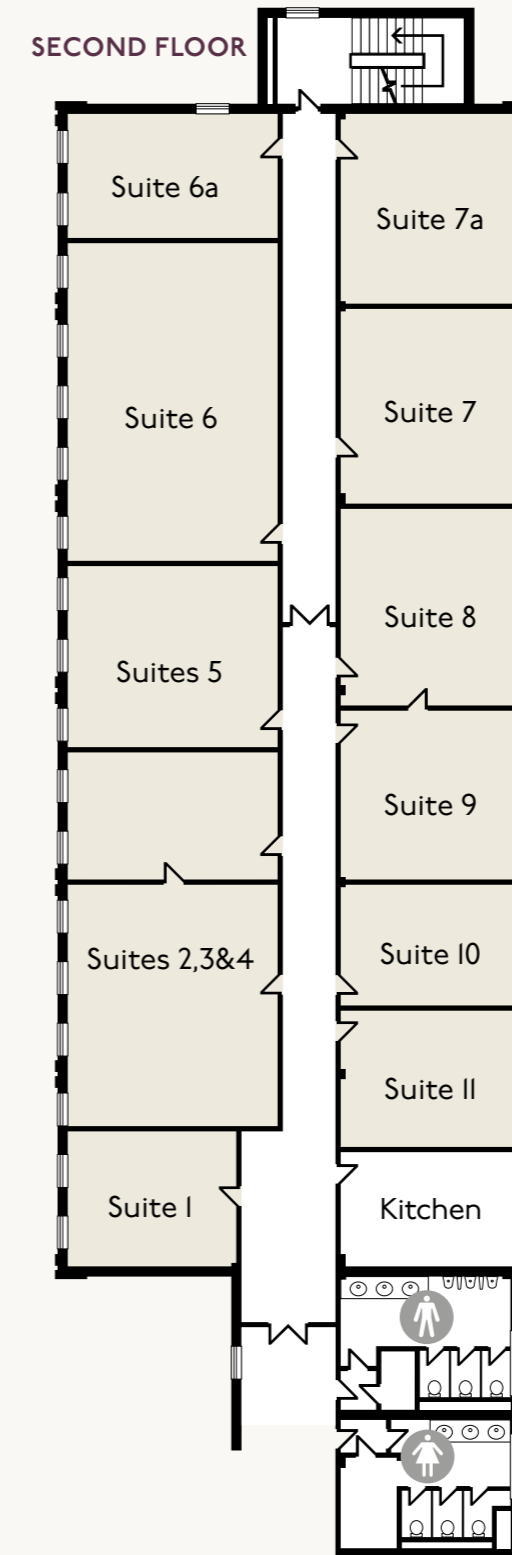
The available small office suites have: LED lighting, gas-fired central heating and shared kitchen facilities on each floor for added convenience. Power and network cabling are pre-installed for quick and easy set-up.



A MODERN THREE-STOREY OFFICE BUILDING

Springfield House offers:

- On-site parking
- Annual licences
- All-inclusive packages
- On-site building manager
- Perimeter heating
- Shared kitchen facilities
- 13 person passenger lift
- 24-hour access including swipe entry card
- The flexibility to expand as your business grows





WALKING

- Courthill House
- Gail's Bakery 1 Min
- Juniper 2 Mins
- Stolen Lamb 3 Mins
- Rex Cinema 4 Mins
- Tesco/Post Office 5 Mins
- Cibo 6 Mins
- Waitrose 7 Mins
- Leisure Centre 8 Mins
- Wilmslow Train Station 9 Mins

10 MINS

DRIVING

- Courthill House
- A34 2 Mins
- A555 5 Mins
- Manchester Airport 10 Mins
- M60 12 Mins
- M56 13 Mins
- Manchester City Centre 25 Mins
- M6 28 Mins
- Chester 50 Mins
- Liverpool 1 Hour

1 HOUR

TRAIN

- Wilmslow
- Alderley Edge 3 Mins
- Chelford 7 Mins
- Cheadle Hulme 7 Mins
- Manchester Airport 8 Mins
- Stockport 13 Mins
- Manchester Piccadilly 27 Mins
- Crewe 28 Mins
- Stafford 40 Mins
- London Euston 1 Hour 55 Mins

2 HOURS



SPRINGFIELD HOUSE

WATER LANE | WILMSLOW | SK9 5BG

Orbit
Developments

01625 588200

orbit-developments.co.uk

Images are for illustrative purposes only and may not represent the exact office space available.

Developer reserves the right to change the scheme in the future. However, the Vendors / Lessors and Agents of intended as a general outline only, for the guidance of prospective purchasers or tenants, and do not constitute the whole or any part of an offer or contract. (2) They cannot guarantee the accuracy of any description, dimension or other details contained in these Particulars and prospective purchasers or tenants should not rely on them as statements of fact or representation, but must satisfy themselves as to the accuracy of such details. (3) No employee of the Agents has any authority to make or give any representation or warranty, or enter into any contract whatsoever in relation to the property (0426)