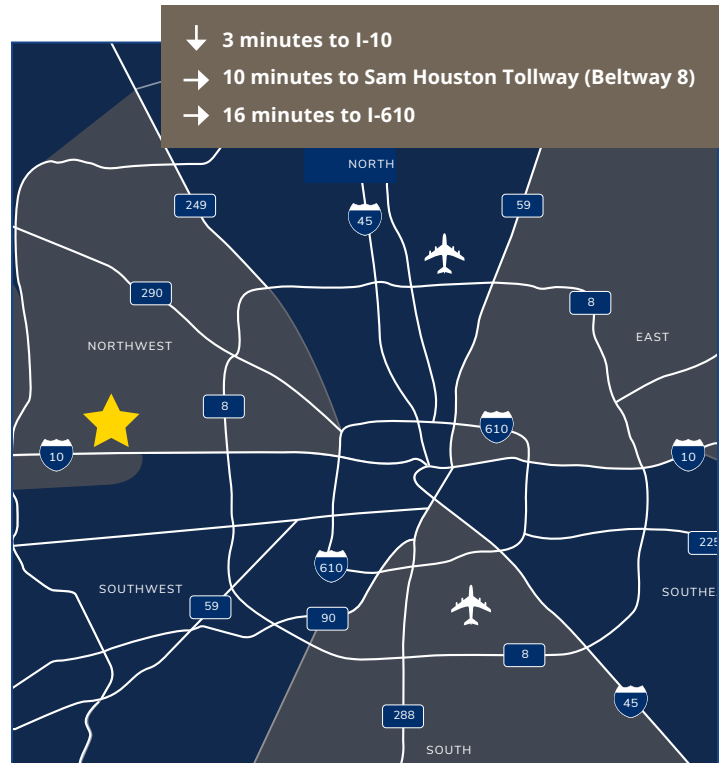




**2,400 SF**  
Available

## PROPERTY HIGHLIGHTS

- 4 buildings
- 175,665 SF total
- Rear-load configuration
- 14'-25' clear height



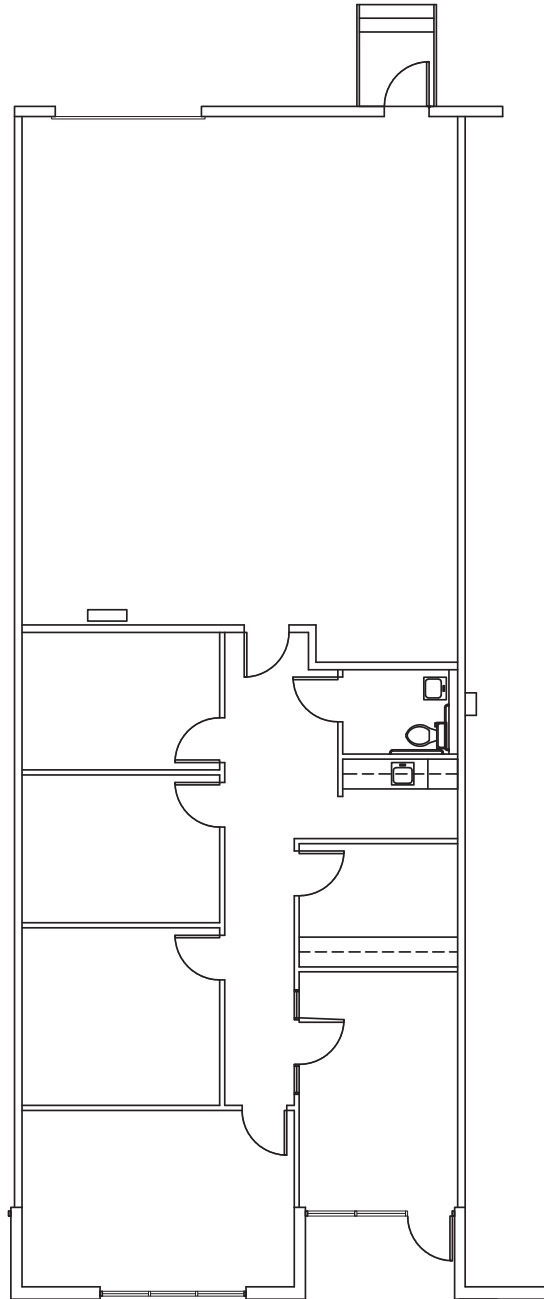
# FLOORPLAN

1718 N. FRY ROAD  
Suite 320  
HOUSTON, TX 77084

2,400 SF  
Available

## SUITE 320

- WAREHOUSE: 1,066
- OFFICE: 1,334



**FOR LEASING INFORMATION, PLEASE CONTACT:**  
MEG ZSCHAPPEL | 713.300.0284 | meg.zschappel@streamrealty.com  
WILSON KELSEY | 713.300.0283 | wilson.kelsey@streamrealty.com  
[www.streamrealty.com](http://www.streamrealty.com)



# PARK OVERVIEW

1718 N. FRY ROAD  
Suite 320  
HOUSTON, TX 77084



● 1718 N. FRY ROAD ● SUITE 320 ● INGRESS/EGRESS



**FOR LEASING INFORMATION, PLEASE CONTACT:**  
MEG ZSCHAPPEL | 713.300.0284 | meg.zschappel@streamrealty.com  
WILSON KELSEY | 713.300.0283 | wilson.kelsey@streamrealty.com  
[www.streamrealty.com](http://www.streamrealty.com)



# AMENITIES

1718 N. FRY ROAD  
Suite 320  
HOUSTON, TX 77084



**FOR LEASING INFORMATION, PLEASE CONTACT:**  
MEG ZSCHAPPEL | 713.300.0284 | meg.zschappel@streamrealty.com  
WILSON KELSEY | 713.300.0283 | wilson.kelsey@streamrealty.com  
[www.streamrealty.com](http://www.streamrealty.com)

