

EXECUTIVE OFFICE SPACE for LEASE

Multiple Suites Available in the Imagine Building



101 State Drive Hollister, MO 65672

Executive Office Space for Lease in Hollister, MO. Discover beautifully updated office suites in the Imagine Building, offering a modern, professional, and flexible environment ideal for small businesses, startups, or satellite offices. Flexible leasing options allow you to lease only the space you need now, with the ability to expand or adjust as your business grows. Conveniently located just minutes from Hollister's Industrial Park, Branson, College of the Ozarks, Lowe's, Menards, and other key destinations, with quick access to Highway 65, this central location offers excellent visibility, convenience, and functionality allowing you to reach anywhere in the area within minutes. Multiple suites available—call today for details or to schedule a private tour.

- **\$14.00/SF/Y**
- **Suite E 366 sf.**
- **Suite H 572 sf.**
- **Suite L 365 sf.**
- ~~Suite 210~~ **Suite 214 414 sf.**
- **Suite 220 491 sf.**

Property Offered By:

Chris Vinton



Vinton Commercial Realty
1017 W Main St. Hwy 76
Branson Missouri 65616

Mobile: 417.861.6314
Phone: 417.334.9400
chris@vintonrealty.com

VintonRealty.com

VINTON
COMMERCIAL REALTY



For more information: Vinton Commercial Realty 417.334.9400 chris@vintonrealty.com www.VintonRealty.com
Disclaimer: Information has been obtained from a third party source and Vinton Commercial Realty accepts no responsibility for its accuracy



For more information: Vinton Commercial Realty 417.334.9400 chris@vintonrealty.com www.VintonRealty.com
Disclaimer: Information has been obtained from a third party source and Vinton Commercial Realty accepts no responsibility for its accuracy

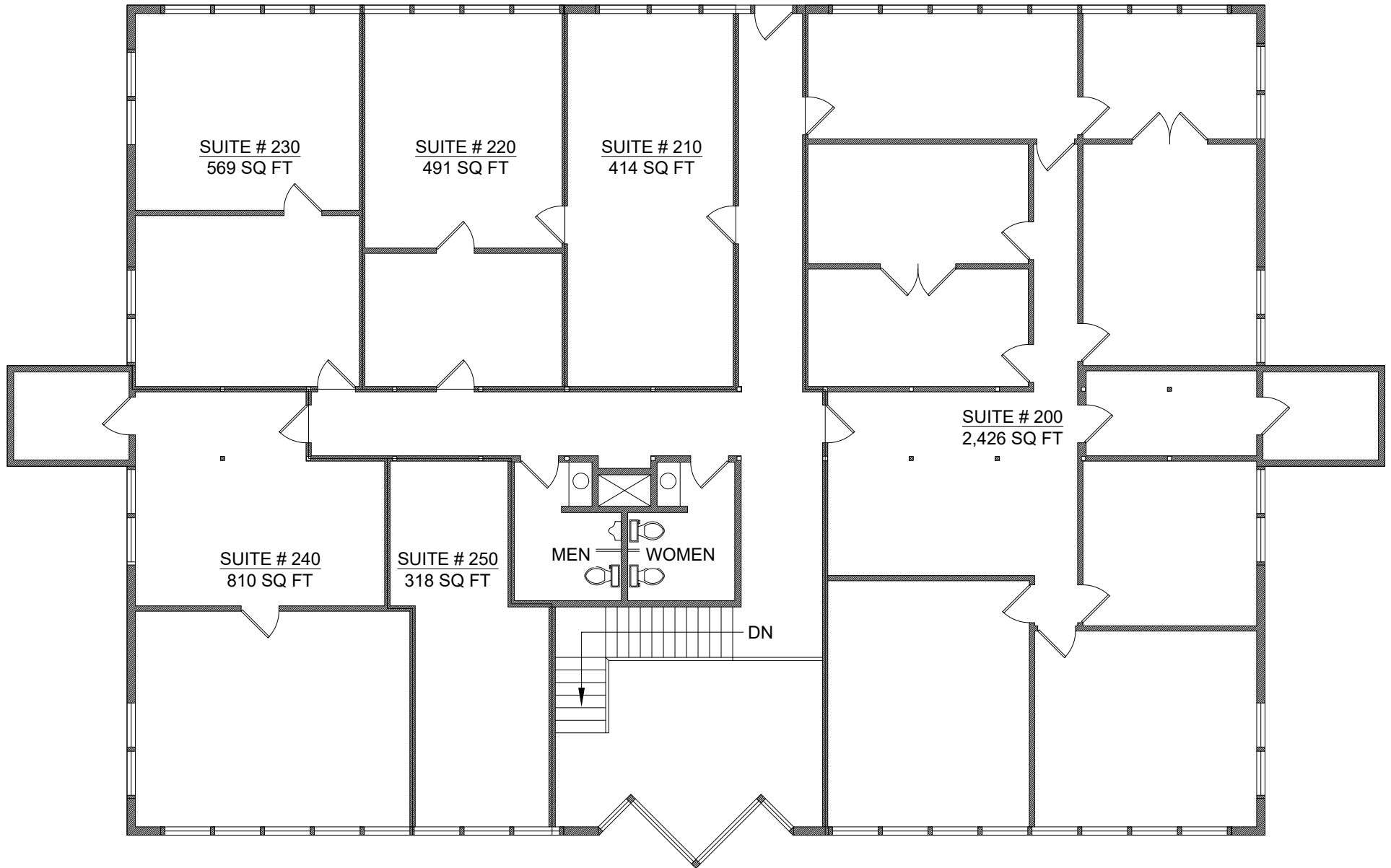




LEVEL 1 FLOOR PLAN

For more information: Vinton Commercial Realty 417.334.9400 chris@vintonrealty.com www.VintonRealty.com


Disclaimer: Information has been obtained from a third party source and Vinton Commercial Realty accepts no responsibility for its accuracy



LEVEL 2 FLOOR PLAN

For more information: Vinton Commercial Realty 417.334.9400 chris@vintonrealty.com www.VintonRealty.com


Disclaimer: Information has been obtained from a third party source and Vinton Commercial Realty accepts no responsibility for its accuracy

	60308151 Commercial-All Types Office Active	
	<table border="0"> <tr> <td> County: Taney Aprx Lot Size (Acres): 0 Aprx Year Built: 1994 Lake/River: None Agreement Type: Exclusive Right To Lease Sign on Property: Yes Garage/Carport: No </td> <td> List Price: \$14 List Price/SqFt: 0.04 Lease Rate (\$/SF/YR): 14 Lease Type: GR Lease Type: GR SqFt - Total: 366 Section: 18 Township: 22 Range: 21 Inside City Limits: Yes Construction Status: Existing Foreclosure/Short Sale: No </td> </tr> </table>	County: Taney Aprx Lot Size (Acres): 0 Aprx Year Built: 1994 Lake/River: None Agreement Type: Exclusive Right To Lease Sign on Property: Yes Garage/Carport: No
County: Taney Aprx Lot Size (Acres): 0 Aprx Year Built: 1994 Lake/River: None Agreement Type: Exclusive Right To Lease Sign on Property: Yes Garage/Carport: No	List Price: \$14 List Price/SqFt: 0.04 Lease Rate (\$/SF/YR): 14 Lease Type: GR Lease Type: GR SqFt - Total: 366 Section: 18 Township: 22 Range: 21 Inside City Limits: Yes Construction Status: Existing Foreclosure/Short Sale: No	

Directions: US-65 in Hollister take College of the Ozarks exit, turn left on MO-165N. Follow for .9 miles, turn right at stop sign to stay on MO-165N. Follow for .4 miles. Turn left on State Drive. Building directly in front of you.
Legal Description: OAKS LT 4 BLK A CITY OF HOLLISTER Legal on title shall govern.

Marketing Remarks: Small office for lease. Executive Office Space for Lease in Hollister, MO. Discover beautifully updated office suites in the Imagine Building, offering a modern, professional, and flexible environment ideal for small businesses, startups, or satellite offices. Suite E features approximately 366 sq. ft. of open office space, perfect for an efficient and professional workspace setup. Flexible leasing options allow you to lease only the space you need now, with the ability to expand or adjust as your business grows. Conveniently located just minutes from Hollister's Industrial Park, Branson, College of the Ozarks, Lowe's, Menards, and other key destinations, with quick access to Highway 65, this central location offers excellent visibility, convenience, and functionality—allowing you to reach anywhere in the area within minutes. Multiple suites available—call today for details or to schedule a private tour.
 **Information contained in this listing has been obtained through third party sources deemed reliable. Listing Broker assumes no responsibility for its accuracy and Buyer shall independently confirm any information set forth above.

Details	Dock Information	Tax & Legal
How to Show: Call Listing Agent; Call Listing Office County: Taney View: Panoramic Miscellaneous: Cable TV; Exhaust Fan(s); Handicap Accessible; Reception Area; Security Lighting; Smoke Detectors; Water Heater-Electric Utilities Available: Electric; High Speed Internet Access; Master Meter; Public Water; Water Well Business Type: Business Service; Office; Other-See Remarks	Parking: 20+ Spaces; Hard Surface; Parking Area; Private Drive Heating: Electric; Forced Air; Heat Pump Cooling: Central; Electric; Heat Pump; Zoned Restrooms: 4 Waterfront/View: None Roof: Flat Roof; Tar and Gravel	Real Estate Tax: 0 RE Tax Provided By: Assessor Records Parcel ID: 17-4.0-18-004-005-009.002 Transaction Type: Lease

	Presented by Christopher Vinton Vinton Commercial Realty 1017 W. Main Hwy 76 Branson, MO 65616 Office Phone: 417-334-9400 Agent Phone: 417-861-6314 chris@vintonrealty.com http://www.VintonRealty.com 2003020919
--	---


Information is deemed to be reliable, but is not guaranteed. © 2025 MLS and FBS. Prepared by Christopher Vinton on Wednesday, October 22, 2025 1:39 PM. The information on this sheet has been made available by the MLS and may not be the listing of the provider.

	60308154 Commercial-All Types Office Active	
	<table border="0"> <tr> <td> County: Taney Aprx Lot Size (Acres): 0 Aprx Year Built: 1994 Lake/River: None Agreement Type: Exclusive Right To Lease Sign on Property: Yes Garage/Carport: No </td> <td> List Price: \$14 List Price/SqFt: 0.02 Lease Rate (\$/SF/YR): 14 Lease Type: GR Lease Type: GR SqFt - Total: 572 Section: 18 Township: 22 Range: 21 Inside City Limits: Yes Construction Status: Existing Foreclosure/Short Sale: No </td> </tr> </table>	County: Taney Aprx Lot Size (Acres): 0 Aprx Year Built: 1994 Lake/River: None Agreement Type: Exclusive Right To Lease Sign on Property: Yes Garage/Carport: No
County: Taney Aprx Lot Size (Acres): 0 Aprx Year Built: 1994 Lake/River: None Agreement Type: Exclusive Right To Lease Sign on Property: Yes Garage/Carport: No	List Price: \$14 List Price/SqFt: 0.02 Lease Rate (\$/SF/YR): 14 Lease Type: GR Lease Type: GR SqFt - Total: 572 Section: 18 Township: 22 Range: 21 Inside City Limits: Yes Construction Status: Existing Foreclosure/Short Sale: No	

Directions: US-65 in Hollister take College of the Ozarks exit, turn left on MO-165N. Follow for .9 miles, turn right at stop sign to stay on MO-165N. Follow for .4 miles. Turn left on State Drive. Building directly in front of you.
Legal Description: OAKS LT 4 BLK A CITY OF HOLLISTER Legal on title shall govern.

Marketing Remarks: Small office for lease. Executive Office Space for Lease in Hollister, MO. Discover beautifully updated office suites in the Imagine Building, offering a modern, professional, and flexible environment ideal for small businesses, startups, or satellite offices. Suite H features approximately 572 sq. ft. of open office space, perfect for an efficient and professional workspace setup. Flexible leasing options allow you to lease only the space you need now, with the ability to expand or adjust as your business grows. Conveniently located just minutes from Hollister's Industrial Park, Branson, College of the Ozarks, Lowe's, Menards, and other key destinations, with quick access to Highway 65, this central location offers excellent visibility, convenience, and functionality—allowing you to reach anywhere in the area within minutes. Multiple suites available—call today for details or to schedule a private tour.
 **Information contained in this listing has been obtained through third party sources deemed reliable. Listing Broker assumes no responsibility for its accuracy and Buyer shall independently confirm any information set forth above.

Details	Dock Information	Tax & Legal
How to Show: Call Listing Agent; Call Listing Office County: Taney View: Panoramic Miscellaneous: Cable TV; Exhaust Fan(s); Handicap Accessible; Reception Area; Security Lighting; Smoke Detectors; Water Heater-Electric Utilities Available: Electric; High Speed Internet Access; Master Meter; Public Water; Water Well Business Type: Business Service; Office; Other-See Remarks	Parking: 20+ Spaces; Hard Surface; Parking Area; Private Drive Heating: Electric; Forced Air; Heat Pump Cooling: Central; Electric; Heat Pump; Zoned Restrooms: 4 Waterfront/View: None Roof: Flat Roof; Tar and Gravel	Real Estate Tax: 0 RE Tax Provided By: Assessor Records Parcel ID: 17-4.0-18-004-005-009.002 Transaction Type: Lease

	Presented by Christopher Vinton Vinton Commercial Realty 1017 W. Main Hwy 76 Branson, MO 65616 Office Phone: 417-334-9400 Agent Phone: 417-861-6314 chris@vintonrealty.com http://www.VintonRealty.com 2003020919
--	---


Information is deemed to be reliable, but is not guaranteed. © 2025 MLS and FBS. Prepared by Christopher Vinton on Wednesday, October 22, 2025 1:43 PM. The information on this sheet has been made available by the MLS and may not be the listing of the provider.

	60308159 Commercial-All Types Office Active	
	<table border="0"> <tr> <td> County: Taney Aprx Lot Size (Acres): 0 Aprx Year Built: 1994 Lake/River: None Agreement Type: Exclusive Right To Lease Sign on Property: Yes Garage/Carport: No </td> <td> List Price: \$14 List Price/SqFt: 0.04 Lease Rate (\$/SF/YR): 14 Lease Type: GR Lease Type: GR SqFt - Total: 365 Section: 18 Township: 22 Range: 21 Inside City Limits: Yes Construction Status: Existing Foreclosure/Short Sale: No </td> </tr> </table>	County: Taney Aprx Lot Size (Acres): 0 Aprx Year Built: 1994 Lake/River: None Agreement Type: Exclusive Right To Lease Sign on Property: Yes Garage/Carport: No
County: Taney Aprx Lot Size (Acres): 0 Aprx Year Built: 1994 Lake/River: None Agreement Type: Exclusive Right To Lease Sign on Property: Yes Garage/Carport: No	List Price: \$14 List Price/SqFt: 0.04 Lease Rate (\$/SF/YR): 14 Lease Type: GR Lease Type: GR SqFt - Total: 365 Section: 18 Township: 22 Range: 21 Inside City Limits: Yes Construction Status: Existing Foreclosure/Short Sale: No	


Directions: US-65 in Hollister take College of the Ozarks exit, turn left on MO-165N. Follow for .9 miles, turn right at stop sign to stay on MO-165N. Follow for .4 miles. Turn left on State Drive. Building directly in front of you.
Legal Description: OAKS LT 4 BLK A CITY OF HOLLISTER Legal on title shall govern.

Marketing Remarks: Small office for lease. Executive Office Space for Lease in Hollister, MO. Discover beautifully updated office suites in the Imagine Building, offering a modern, professional, and flexible environment ideal for small businesses, startups, or satellite offices. Suite L features approximately 365 sq. ft. of open office space, perfect for an efficient and professional workspace setup. Flexible leasing options allow you to lease only the space you need now, with the ability to expand or adjust as your business grows. Conveniently located just minutes from Hollister's Industrial Park, Branson, College of the Ozarks, Lowe's, Menards, and other key destinations, with quick access to Highway 65, this central location offers excellent visibility, convenience, and functionality—allowing you to reach anywhere in the area within minutes. Multiple suites available—call today for details or to schedule a private tour.
 **Information contained in this listing has been obtained through third party sources deemed reliable. Listing Broker assumes no responsibility for its accuracy and Buyer shall independently confirm any information set forth above.

Details	Dock Information	Tax & Legal
How to Show: Call Listing Agent; Call Listing Office County: Taney View: Panoramic Miscellaneous: Cable TV; Exhaust Fan(s); Handicap Accessible; Reception Area; Security Lighting; Smoke Detectors; Water Heater-Electric Utilities Available: Electric; High Speed Internet Access; Master Meter; Public Water; Water Well Business Type: Business Service; Office; Other-See Remarks	Parking: 20+ Spaces; Hard Surface; Parking Area; Private Drive Heating: Electric; Forced Air; Heat Pump Cooling: Central; Electric; Heat Pump; Zoned Restrooms: 4 Waterfront/View: None Roof: Flat Roof; Tar and Gravel	Real Estate Tax: 0 RE Tax Provided By: Assessor Records Parcel ID: 17-4.0-18-004-005-009.002 Transaction Type: Lease

	Presented by Christopher Vinton Vinton Commercial Realty 1017 W. Main Hwy 76 Branson, MO 65616 Office Phone: 417-334-9400 Agent Phone: 417-861-6314 chris@vintonrealty.com http://www.VintonRealty.com 2003020919
--	---


Information is deemed to be reliable, but is not guaranteed. © 2025 MLS and FBS. Prepared by Christopher Vinton on Wednesday, October 22, 2025 1:58 PM. The information on this sheet has been made available by the MLS and may not be the listing of the provider.

	<p>60308157 Commercial-All Types Office Active</p>	
	<table border="1"> <tr> <td> <p>County: Taney Aprx Lot Size (Acres): 0 Aprx Year Built: 1994 Lake/River: None Agreement Type: Exclusive Right To Lease Sign on Property: Yes Garage/Carport: No</p> </td> <td> <p>List Price: \$14 List Price/SqFt: 0.03 Lease Rate (\$/SF/YR): 14 Lease Type: GR Lease Type: GR SqFt - Total: 491 Section: 18 Township: 22 Range: 21 Inside City Limits: Yes Construction Status: Existing Foreclosure/Short Sale: No</p> </td> </tr> </table>	<p>County: Taney Aprx Lot Size (Acres): 0 Aprx Year Built: 1994 Lake/River: None Agreement Type: Exclusive Right To Lease Sign on Property: Yes Garage/Carport: No</p>
<p>County: Taney Aprx Lot Size (Acres): 0 Aprx Year Built: 1994 Lake/River: None Agreement Type: Exclusive Right To Lease Sign on Property: Yes Garage/Carport: No</p>	<p>List Price: \$14 List Price/SqFt: 0.03 Lease Rate (\$/SF/YR): 14 Lease Type: GR Lease Type: GR SqFt - Total: 491 Section: 18 Township: 22 Range: 21 Inside City Limits: Yes Construction Status: Existing Foreclosure/Short Sale: No</p>	

Directions: US-65 in Hollister take College of the Ozarks exit, turn left on MO-165N. Follow for .9 miles, turn right at stop sign to stay on MO-165N. Follow for .4 miles. Turn left on State Drive. Building directly in front of you.
Legal Description: OAKS LT 4 BLK A CITY OF HOLLISTER Legal on title shall govern.

Marketing Remarks: Small office for lease. Executive Office Space for Lease in Hollister, MO. Discover beautifully updated office suites in the Imagine Building, offering a modern, professional, and flexible environment ideal for small businesses, startups, or satellite offices. Suite 220 features approximately 491 sq. ft. of open office space, perfect for an efficient and professional workspace setup. Flexible leasing options allow you to lease only the space you need now, with the ability to expand or adjust as your business grows. Conveniently located just minutes from Hollister's Industrial Park, Branson, College of the Ozarks, Lowe's, Menards, and other key destinations, with quick access to Highway 65, this central location offers excellent visibility, convenience, and functionality—allowing you to reach anywhere in the area within minutes. Multiple suites available—call today for details or to schedule a private tour.
 **Information contained in this listing has been obtained through third party sources deemed reliable. Listing Broker assumes no responsibility for its accuracy and Buyer shall independently confirm any information set forth above.

Details	Dock Information	Tax & Legal
<p>How to Show: Call Listing Agent; Call Listing Office County: Taney View: Panoramic Miscellaneous: Cable TV; Exhaust Fan(s); Handicap Accessible; Reception Area; Security Lighting; Smoke Detectors; Water Heater-Electric Utilities Available: Electric; High Speed Internet Access; Master Meter; Public Water; Water Well Business Type: Business Service; Office; Other-See Remarks</p>	<p>Parking: 20+ Spaces; Hard Surface; Parking Area; Private Drive Heating: Electric; Forced Air; Heat Pump Cooling: Central; Electric; Heat Pump; Zoned Restrooms: 4 Waterfront/View: None Roof: Flat Roof; Tar and Gravel</p>	<p>Real Estate Tax: 0 RE Tax Provided By: Assessor Records Parcel ID: 17-4.0-18-004-005-009.002 Transaction Type: Lease</p>

	<p>Presented by Christopher Vinton Vinton Commercial Realty 1017 W. Main Hwy 76 Branson, MO 65616 Office Phone: 417-334-9400 Agent Phone: 417-861-6314 chris@vintonrealty.com http://www.VintonRealty.com 2003020919</p>
--	--

Information is deemed to be reliable, but is not guaranteed. © 2025 MLS and FBS. Prepared by Christopher Vinton on Wednesday, October 22, 2025 1:54 PM. The information on this sheet has been made available by the MLS and may not be the listing of the provider.