

REM. PORTION OF
POALSON INVESTMENTS,
LLC. DOC. NO. 2002093086

S44°31'45"E
123.03'

THE BE
IS FRO
NORTWE
THE OR
20 ACR
S43°55'

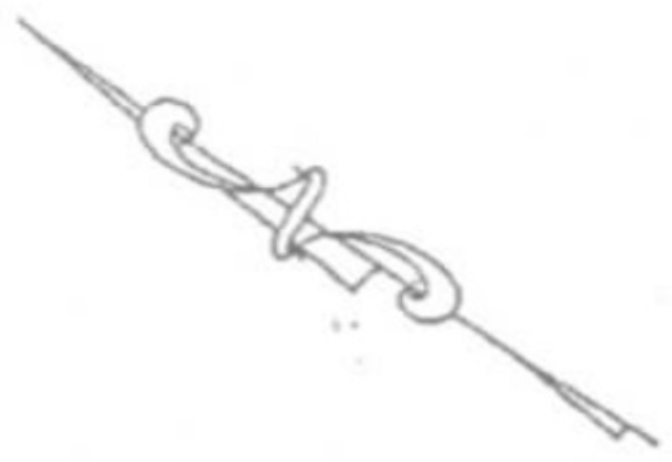
N40°39'54"E
21.05'

N48°14'37"E C=9.03'
A=9.04' R=90.00'

N 44°31'45" W
66.53'

N60°26'10"E C=28.82'
A=28.94' R=90.00'

REM. PORTION OF
POALSON INVESTMENTS,
LLC. DOC. NO. 2002093086



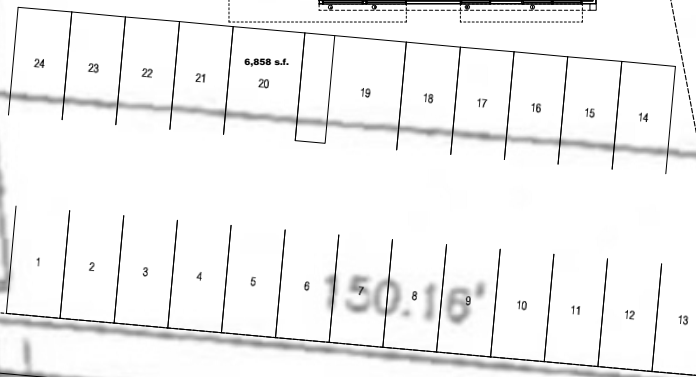
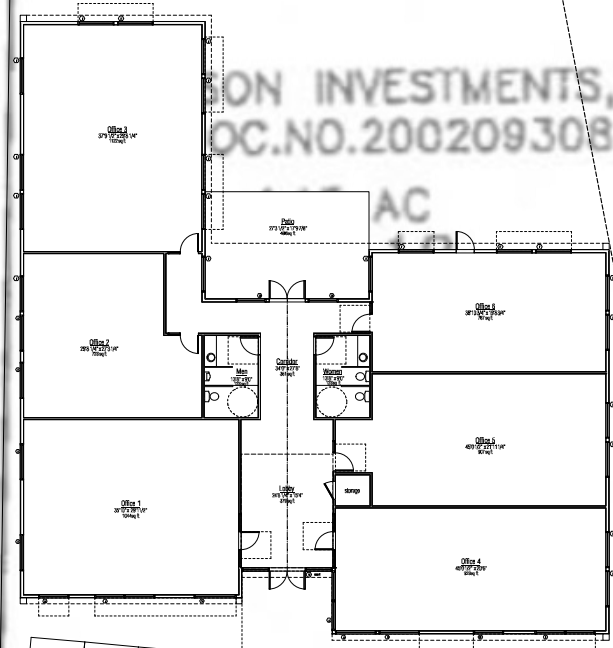
N 56°59'12" E 445.46'

(S 45°27' W 998.02')
S45°27'00" W 999.02'

508.07'

ON INVESTMENTS,
OC. NO. 2002093086

AC

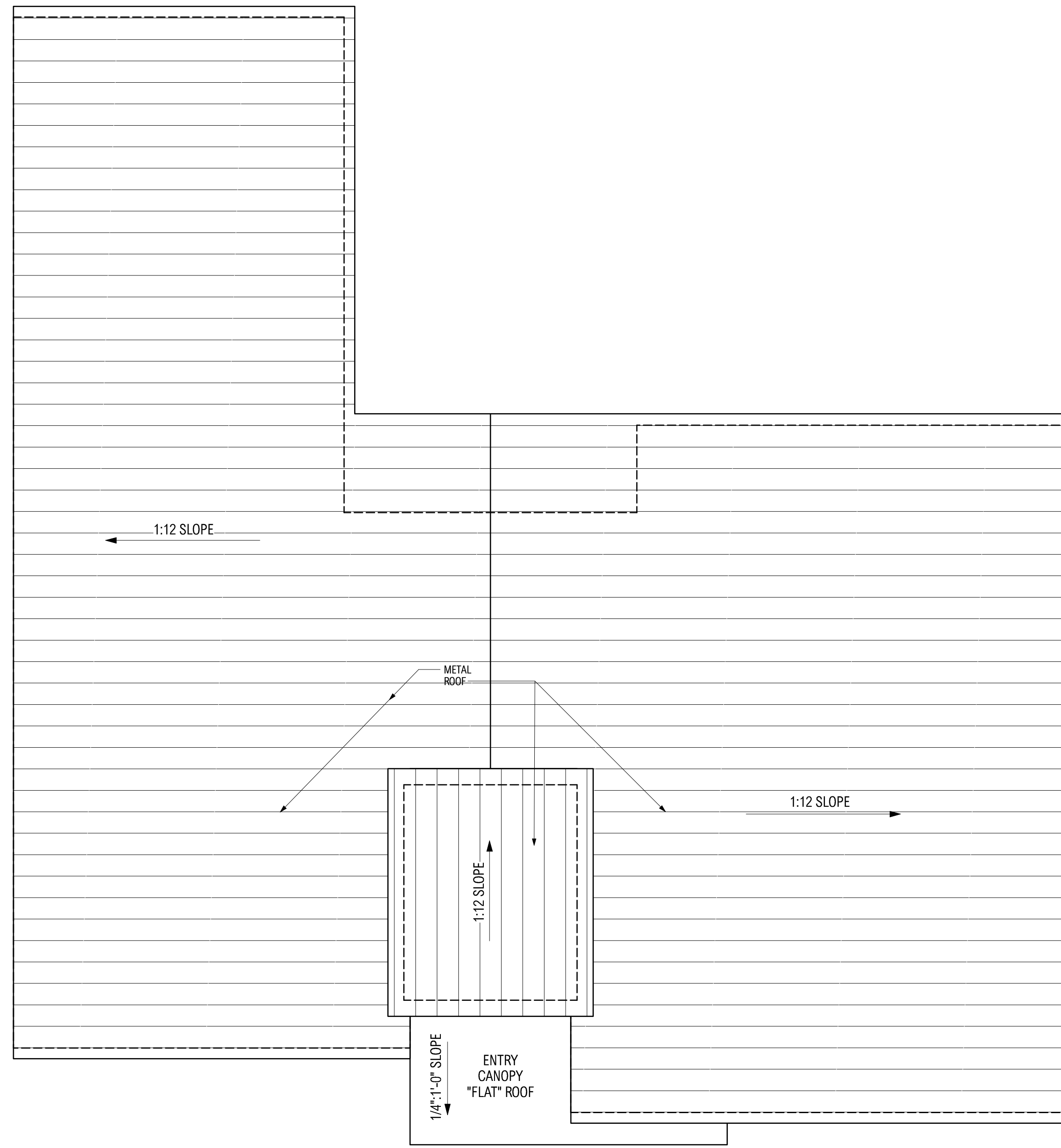


P.O.C.

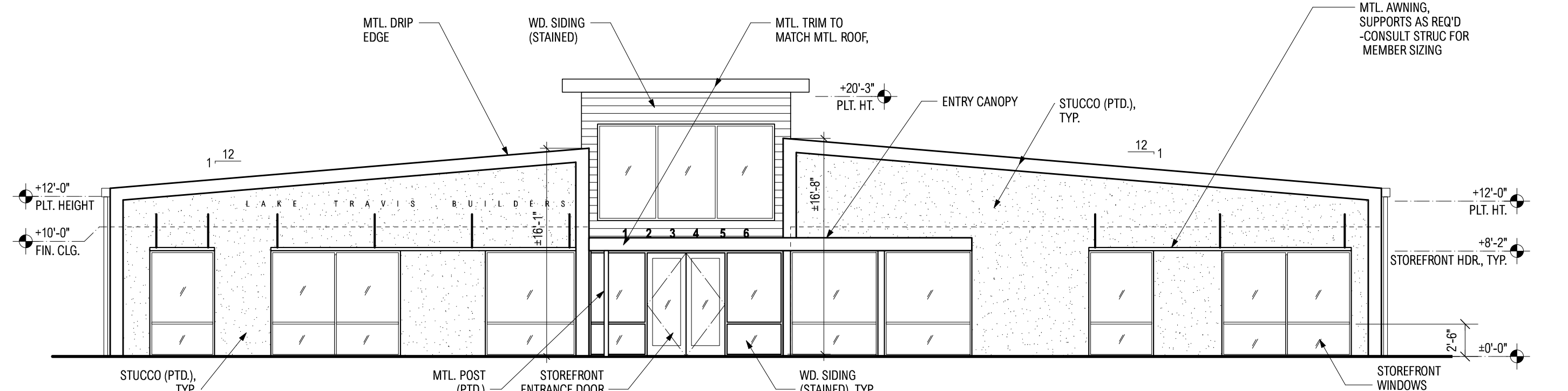
601.53'

P.O.B. CMP

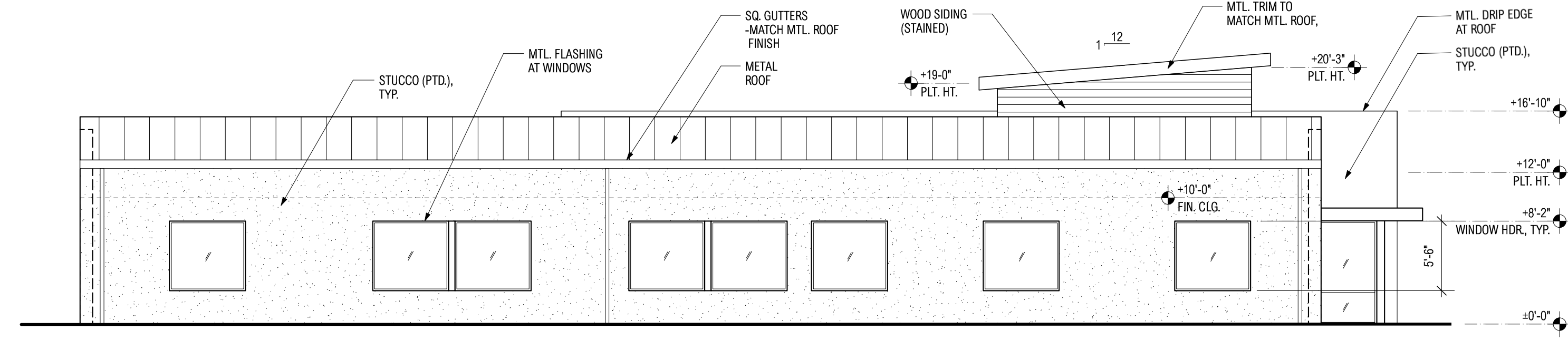
N28°27'18"W 751.69'



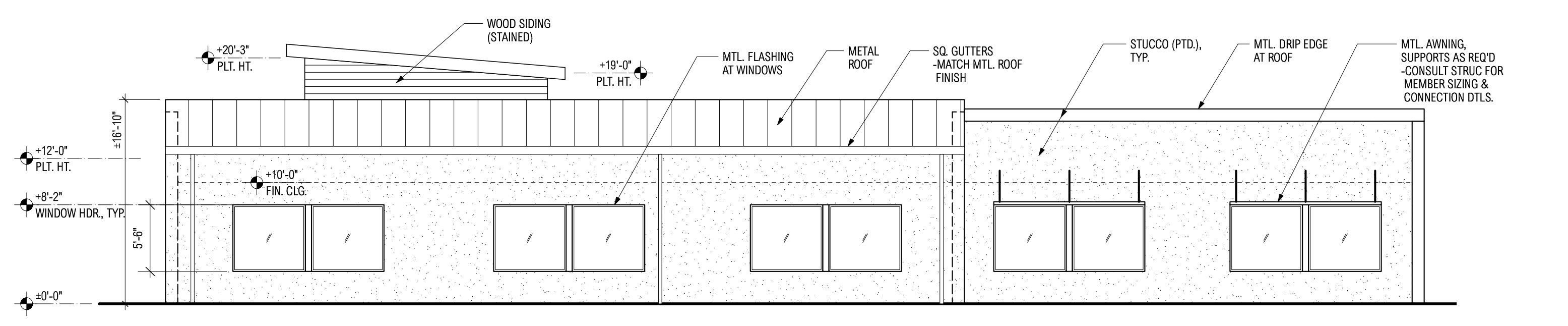
6 Roof Plan
Scale: 1/8" = 1'-0"



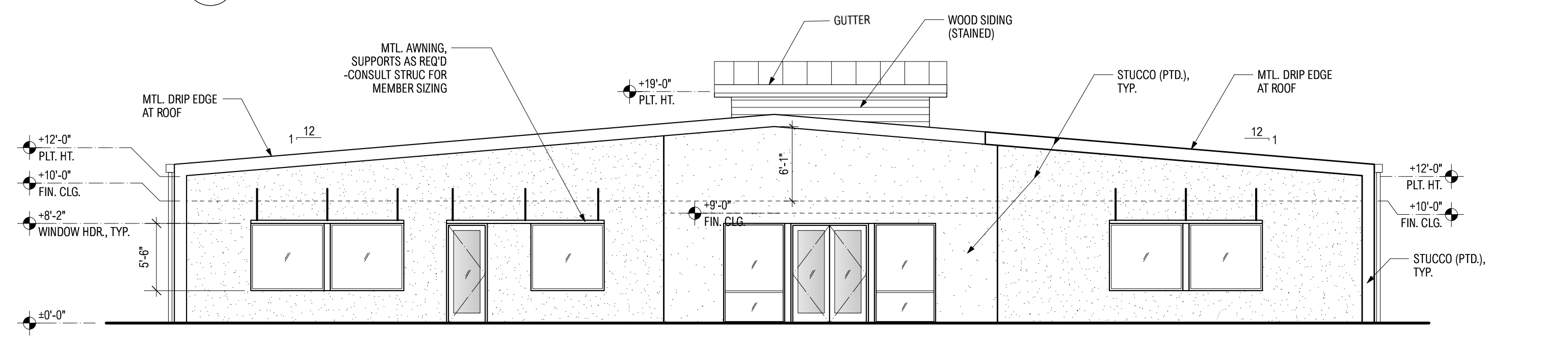
1 West (Front) Elevation
Scale: 1/8" = 1'-0"



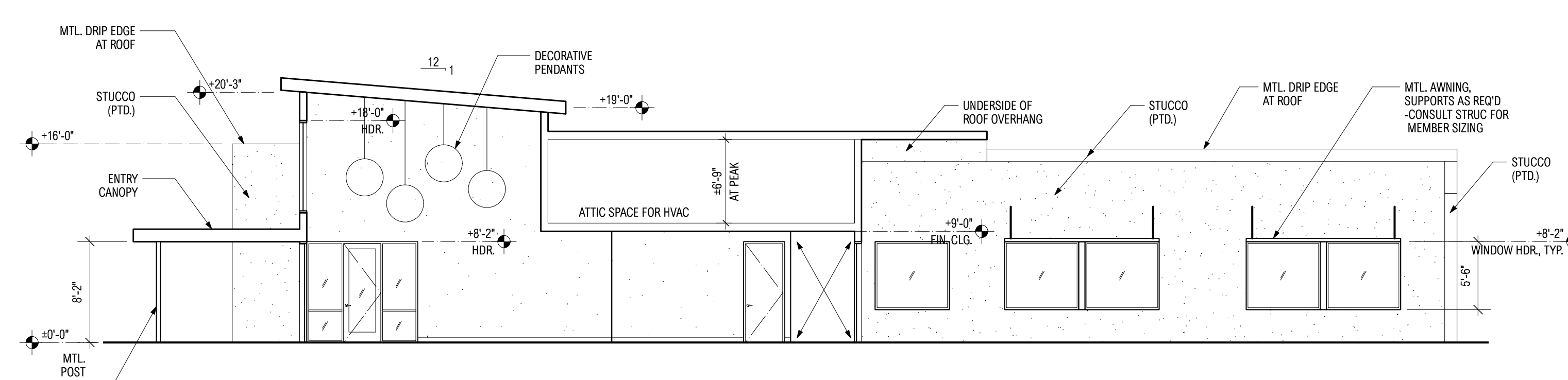
2 North Elevation
Scale: 1/8" = 1'-0"



3 South Elevation
Scale: 1/8" = 1'-0"



4 East Elevation
Scale: 1/8" = 1'-0"



5 East/West Section looking North
Scale: 1/8" = 1'-0"

Nena Kim AIA
411 West Annie St.
Austin, Texas 78704
512.436.9866 [P]
512.416.9597 [F]
nena@ninesquarestudio.com



Lake Travis Builders
Austin, TX

FLOOR PLAN
As Noted
03/30/17
Construction Set

A3.1
FLOOR PLAN