

LAND FOR SALE

# 1701 NORTHEAST INNER LOOP GEORGETOWN, TX

## SALE OVERVIEW

ACREAGE:	6.442 AC
SQUARE FOOTAGE:	280,470 SF
SALE PRICE:	Contact Broker
SUBMARKET:	Georgetown-Leander
COUNTY:	Williamson
ZONING:	C-3

## NOTES

- Located in one of the fastest-growing corridors in Central Texas
- Excellent long-term investment fundamentals driven by population and employment growth across Williamson County
- Located in a business-friendly region with continued infrastructure investment
- Surrounded by expanding residential, industrial, and ample mixed-use development activity
- Convenient access to Georgetown Executive Airport, I-35, and SH 130

APPRAISAL AVAILABLE

Negotiated LOI for early education center, appraisal available.



## CONTACT



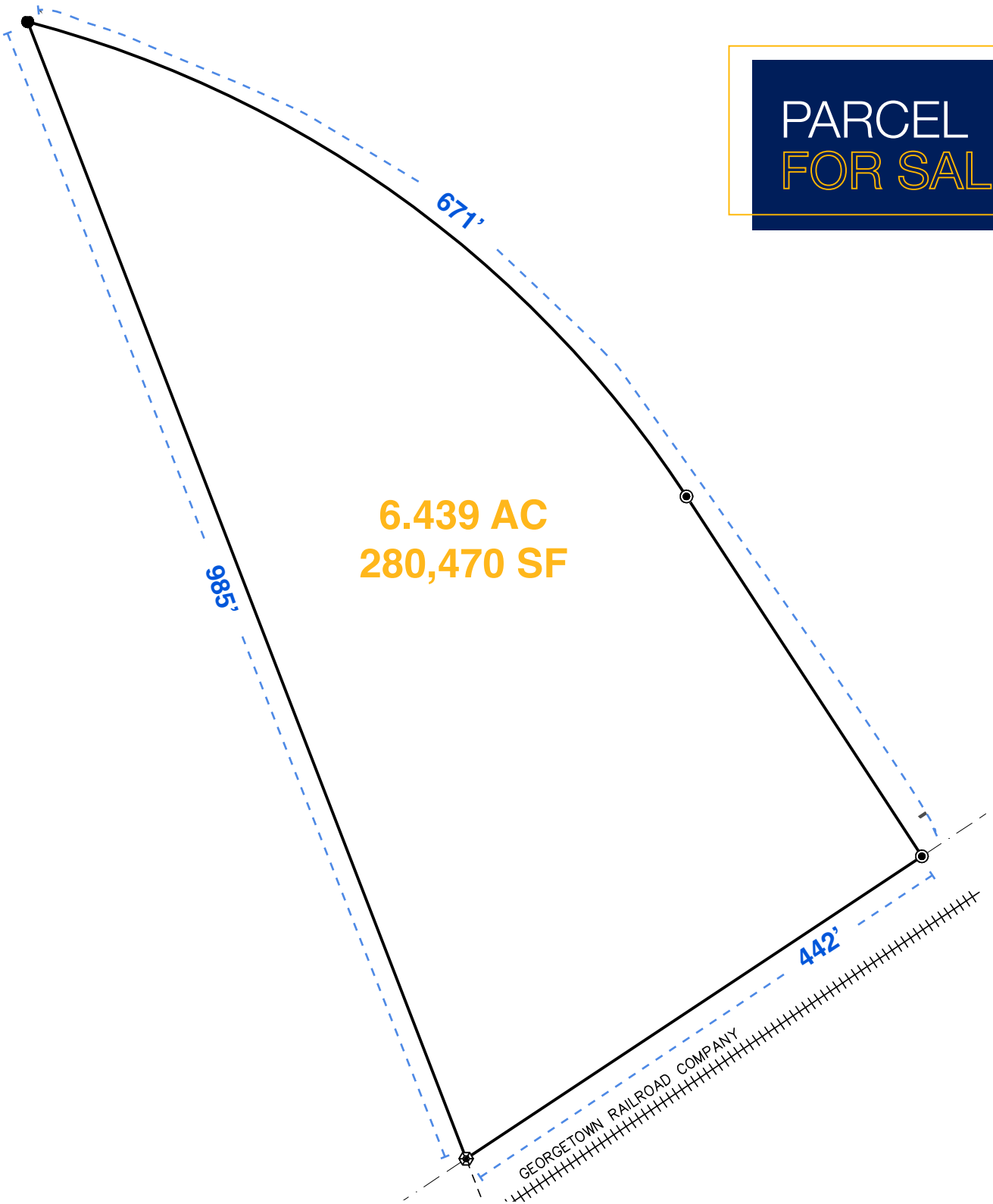
**ROBERT GARRICK**  
512.426.1023  
rgarrick@cresa.com

# 1701 NORTHEAST INNER LOOP

Georgetown, TX 78626



PARCEL  
FOR SALE



**ROBERT GARRICK**  
512.426.1023  
rgarrick@cresa.com

Cresa © 2026. All rights reserved. The information contained in this document has been obtained from sources believed reliable. While Cresa does not doubt its accuracy, Cresa has not verified it and makes no guarantee, warranty, or representation about it. It is your responsibility to independently confirm its accuracy and completeness.

# 1701 NORTHEAST INNER LOOP

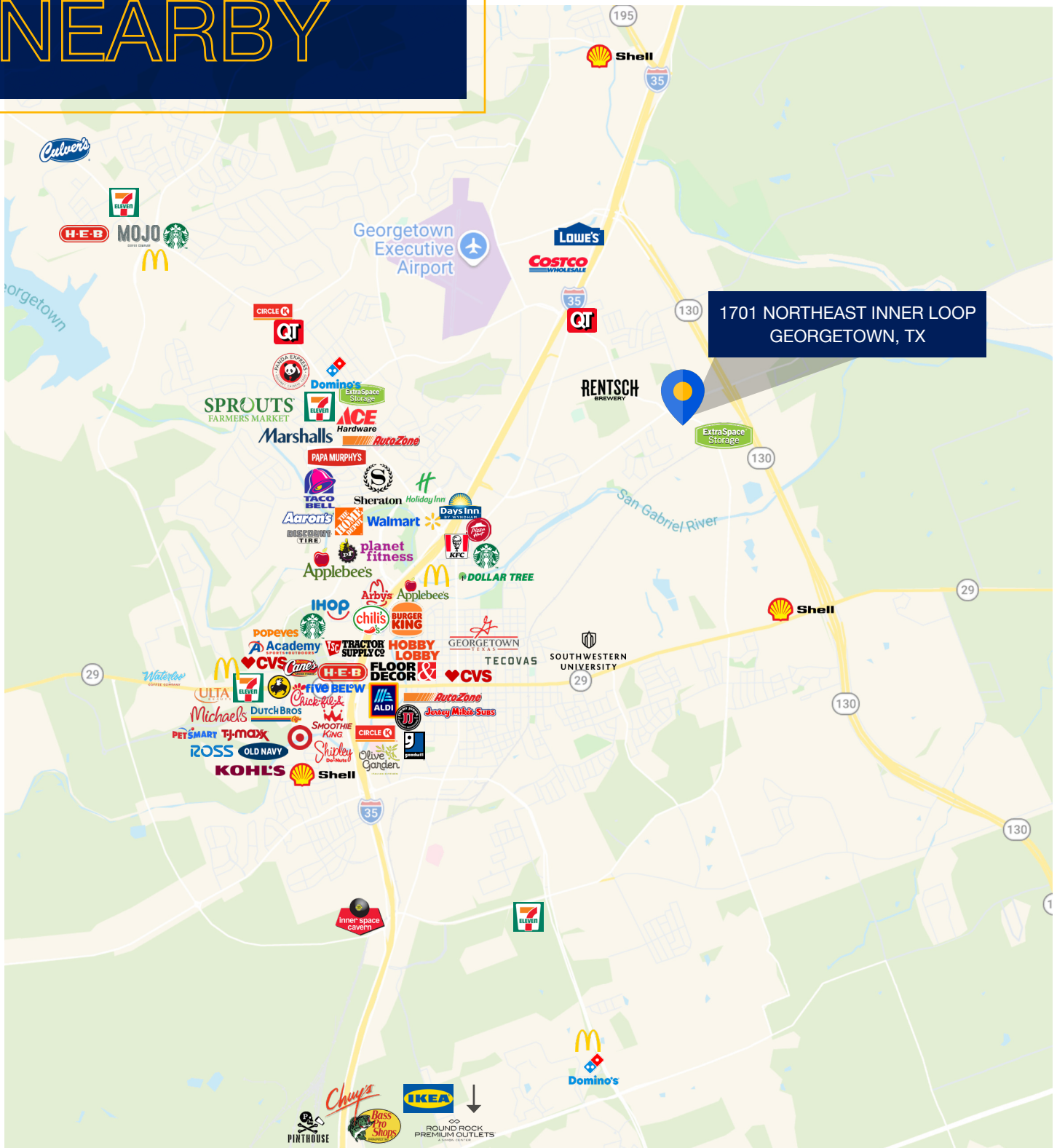
Georgetown, TX 78626



**ROBERT GARRICK**  
512.426.1023  
rgarrick@cresa.com

Cresa © 2026. All rights reserved. The information contained in this document has been obtained from sources believed reliable. While Cresa does not doubt its accuracy, Cresa has not verified it and makes no guarantee, warranty, or representation about it. It is your responsibility to independently confirm its accuracy and completeness.

# RETAILERS NEARBY



**ROBERT GARRICK**  
512.426.1023  
rgarrick@cresa.com

Cresa © 2026. All rights reserved. The information contained in this document has been obtained from sources believed reliable. While Cresa does not doubt its accuracy, Cresa has not verified it and makes no guarantee, warranty, or representation about it. It is your responsibility to independently confirm its accuracy and completeness.

# 1701 NORTHEAST INNER LOOP

## Georgetown, TX 78626



### AREA NOTES

- » Minutes from SH 130, providing efficient regional connectivity to Austin, Round Rock, Pflugerville, and Tesla/Samsung corridors
- » Near the \$17B Samsung Semiconductor facility in Taylor, projected to create 1,800+ permanent jobs and thousands of construction jobs
- » Williamson County added more than 25,000 new residents from 2023–2024 and is projected to reach 1.6 million residents by 2050
- » Georgetown’s population has grown to an estimated 100,000+ residents, continuing its rapid expansion north and east

### DEMOGRAPHICS OVERVIEW

	2 MILES	5 MILES	10 MILES
2020 POPULATION:	8,636	62,357	202,815
2025 POPULATION:	11,692	81,912	263,917
2030 PROJECTED:	13,597	94,905	305,434
ANNUAL GROWTH 2021-2025:	7.1%	6.3%	6.0%
ANNUAL GROWTH 2025-2030:	3.3%	3.2%	3.1%

### HOUSING OVERVIEW

	2 MILES	5 MILES	10 MILES
MEDIAN HOME VALUE:	\$341,718	\$441,087	\$470,724
MEDIAN YEAR BUILT:	2004	2006	2010



**ROBERT GARRICK**  
512.426.1023  
rgarrick@cresa.com

Cresa © 2026. All rights reserved. The information contained in this document has been obtained from sources believed reliable. While Cresa does not doubt its accuracy, Cresa has not verified it and makes no guarantee, warranty, or representation about it. It is your responsibility to independently confirm its accuracy and completeness.

