



**CONFIDENTIAL: do not share without explicit permission from Prime Commercial, Inc.**

2221 TASMAN DR, SANTA CLARA, CA 95054

## **Indoor/Outdoor Santa Clara Beer Garden *Adjacent to Levi's Stadium***

Interior Building: 3,326 SF  
Outdoor Patio: Approx. ~4200 SF

**\$5/SF** (Interior Building) + **\$1/SF** (Outdoor Patio)  
NNNs: \$1.50/SF



- Turnkey beer garden with an AMAZING location right in front of Levi's Stadium
- Highly identity freestanding building
- Fully equipped and available for new tenants to use (including: kitchen equipment, outdoor furniture, entertainment equipment, food truck, and BBQ pit)
- Type 47 Liquor License potentially for sale
- Available within 60 days of a fully executed lease

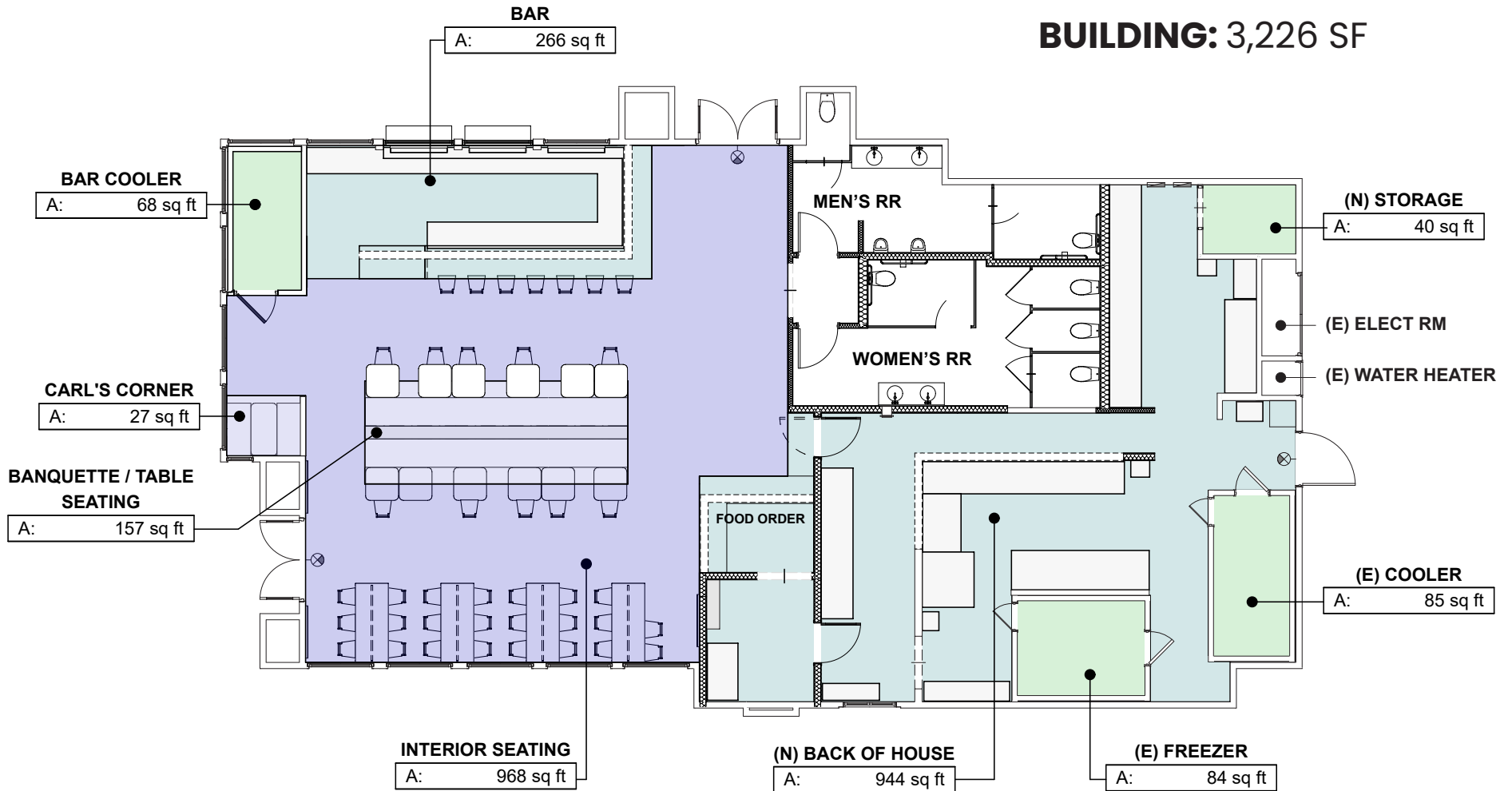
**DO NOT DISTURB CURRENT TENANT!!!**

**PC INC PRIME COMMERCIAL**  
INCORPORATED

**DIXIE DIVINE** CA DRE 00926251 & 01481181  
**(408)313-8900** | [ddivine@primecommercialinc.com](mailto:ddivine@primecommercialinc.com)

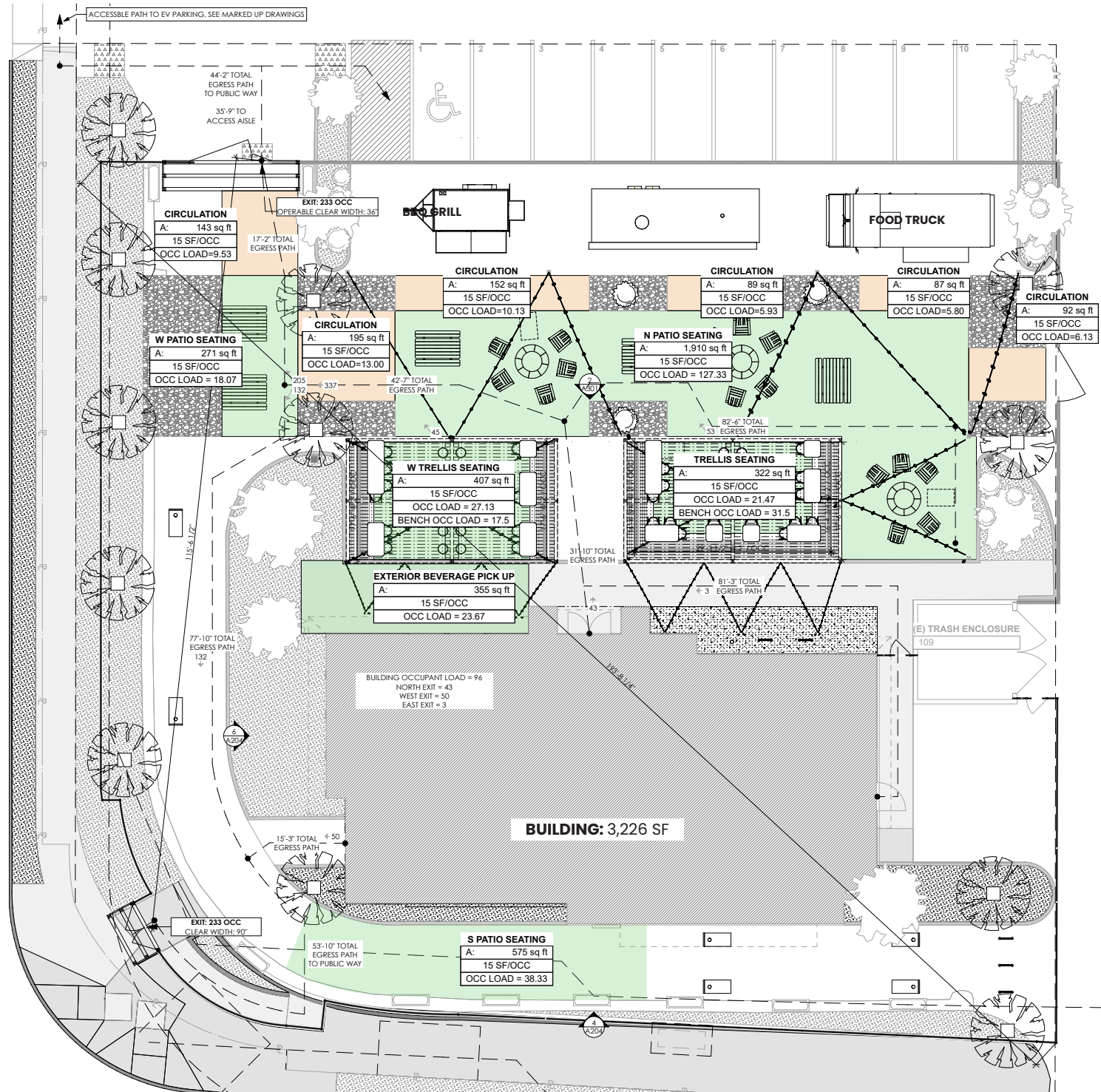
2221 TASMAN DR, SANTA CLARA, CA 95054

# Indoor Floor Plan



2221 TASMAN DR, SANTA CLARA, CA 95054

# Outdoor Patio Plan



**DO NOT DISTURB CURRENT TENANT!!!**