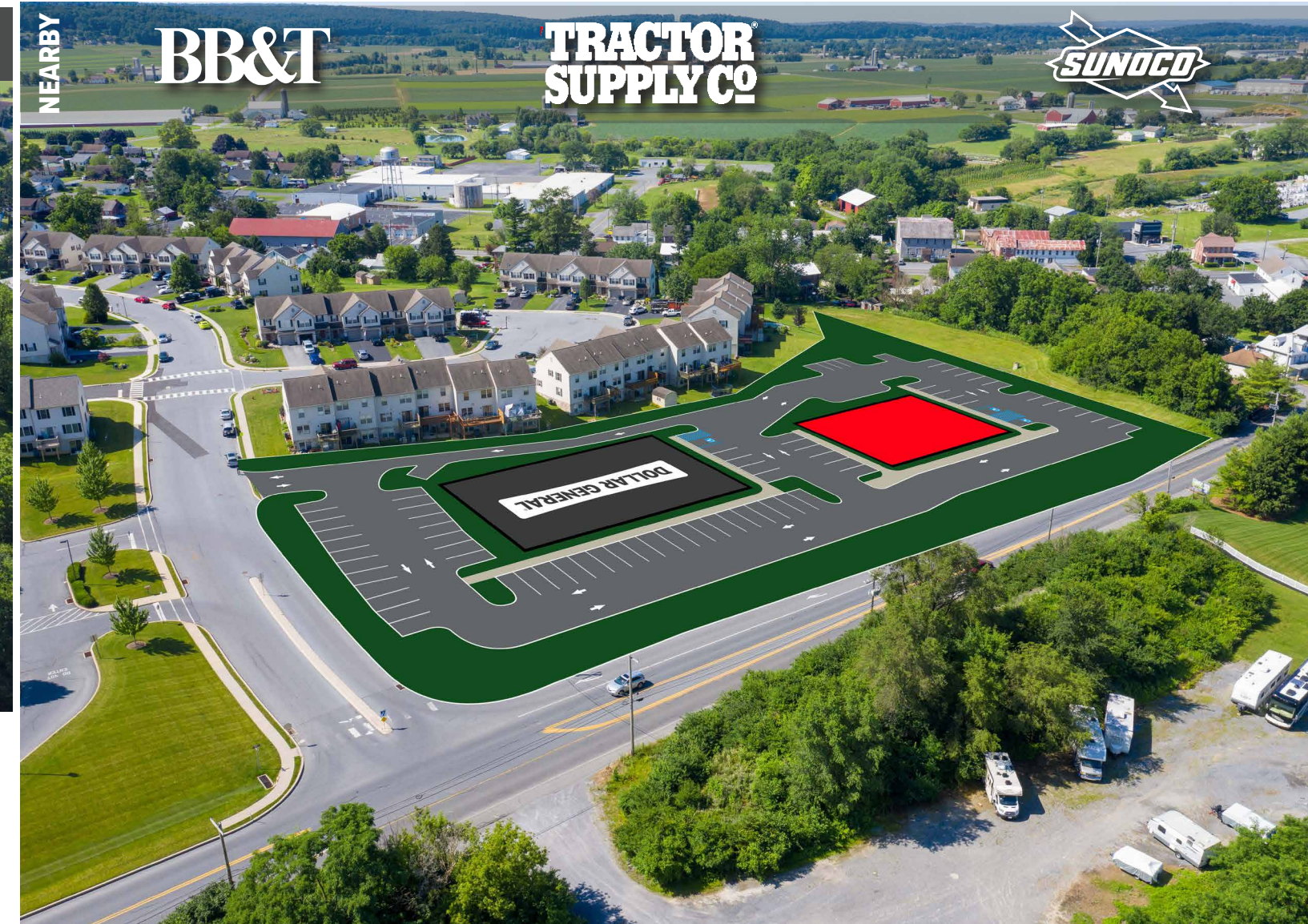


EAST EARL COMMONS

Main Street & Marble Avenue | East Earl, PA | 17519

± 6,000 SF AVAILABLE | FOR LEASE



PROJECT

East Earl Commons is a new construction project for lease in East Earl, PA. The project features two retail buildings, with Dollar General as a strong tenant in one of the spaces. The site is surrounded by a strong residential presence, and near major traffic generators like Shady Maple Smorgasbord, Shady Maple Farm Market, and Goods Market. The parcel offers access from Marble Avenue, which is conveniently accessed from Main Street (11,000 CPD). With the property's position in the growing market of retail and industrial, this creates a great opportunity for any tenant looking to enter the East Earl market.

LOCATION

East Earl Commons is well positioned in the growing East Earl market. The parcel sits on the busy corner of Marble Avenue and Main Street (11,000 CPD). Nearby national retailers such as BB&T, Sunoco, and Tractor Supply Co. bring in traffic to the area. The dense residential area hosts numerous schools and developments such as Earl Union School, Garden Spot High School, Garden Spot Village, and the Landing Spot at GSR. A trade area that extends over 5 miles combined with traffic from the dense residential area allows the site to pull from the surrounding markets.

TRADE AREA

Adding to the stability of the project, East Earl Commons shows a 20-minute drive time demographic of over 45,994 people with household incomes more than \$83,194 and daytime employment demographics equally as strong with 35,074. The demographics within a 10-mile radius include 135,089 people in 48,308 homes, a labor force of 103,615 with an average household income of \$85,708. The areas growth since 2000 has increased 16.5% with over 7,966 homes.

POPULATION		3 MILES - 14,467	EMPLOYEES		3 MILES - 11,190
		5 MILES - 28,674			5 MILES - 21,792
		7 MILES - 50,996			7 MILES - 38,223
AVERAGE HHI		3 MILES - \$74,591	HOUSEHOLDS		3 MILES - 5,238
		5 MILES - \$80,166			5 MILES - 9,993
		7 MILES - \$84,644			7 MILES - 17,007

TRAFFIC COUNTS: MAIN STREET: 19,000 VPD

ACTIVE MEMBER OF:
RETAIL BROKERS NETWORK

York Office: 3528 Concord Rd. York, PA 17402
Exton Office: 1 East Uwchlan Avenue, Suite 409, Exton, PA 19341
Lancaster Office: 150 Farmington Lane, Suite 201, Lancaster, PA 17601

ADAM HAGERMAN | BRAD ROHRBAUGH | CHAD STINE
717-843-5555
www.bennettwilliams.com

Bennett Williams
RETAIL

EAST EARL COMMONS

Main Street & Marble Avenue | East Earl, PA | 17519



ACTIVE MEMBER OF:
RETAIL BROKERS NETWORK

York Office: 3528 Concord Rd. York, PA 17402
Exton Office: 1 East Uwchlan Avenue, Suite 409, Exton, PA 19341
Lancaster Office: 150 Farmington Lane, Suite 201, Lancaster, PA 17601

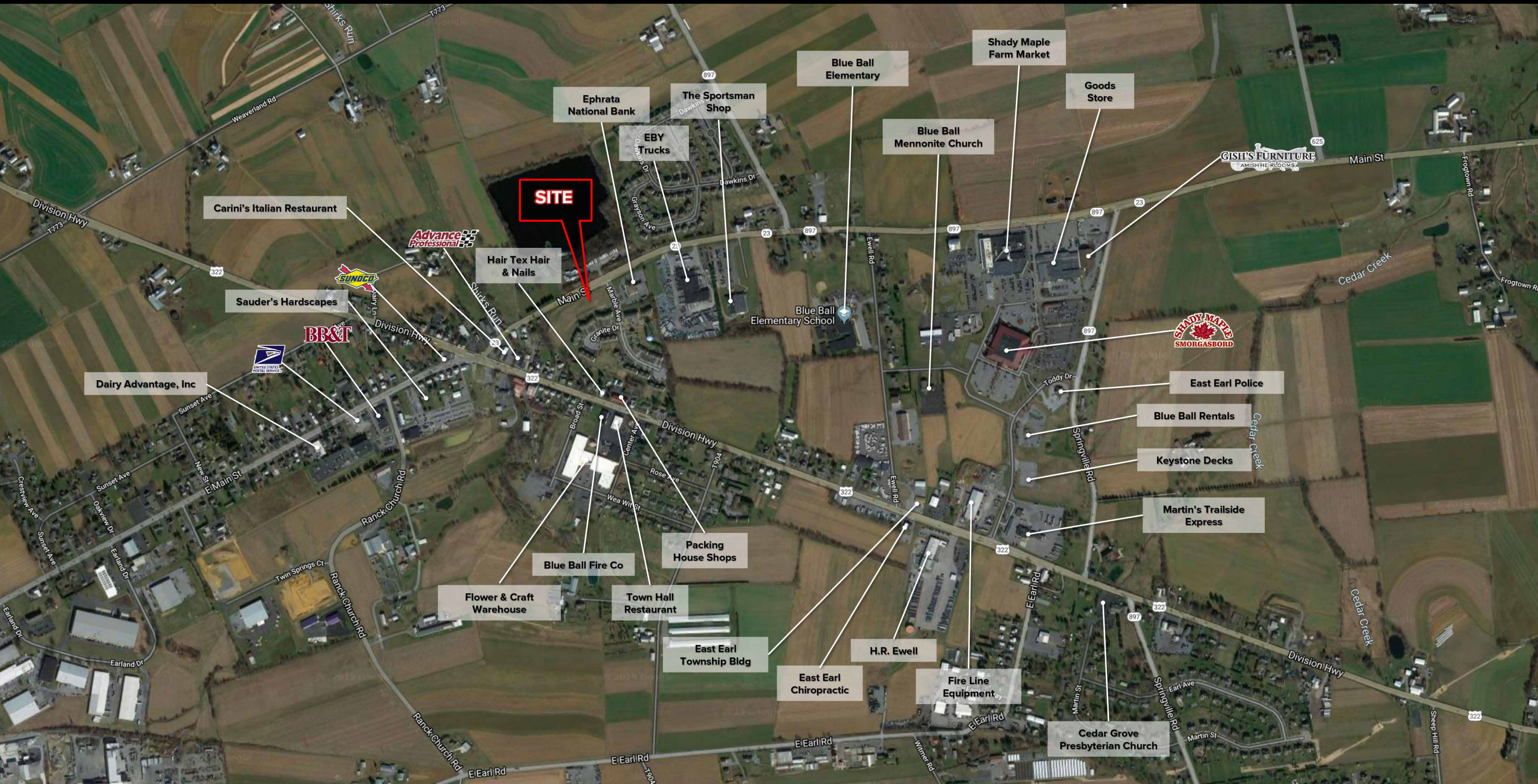
ADAM HAGERMAN | BRAD ROHRBAUGH | CHAD STINE
717-843-5555
www.bennettwilliams.com

Bennett Williams
RETAIL

Information shown is purported to be from reliable sources. No representation is made to the accuracy thereof, and is submitted subject to errors, omissions, change in price, prior sale, withdrawal without notice, or other conditions.

EAST EARL COMMONS

Main Street & Marble Avenue | East Earl, PA | 17519



ACTIVE MEMBER OF:
RETAIL BROKERS NETWORK

York Office: 3528 Concord Rd. York, PA 17402
Exton Office: 1 East Uwchlan Avenue, Suite 409, Exton, PA 19341
Lancaster Office: 150 Farmington Lane, Suite 201, Lancaster, PA 17601

ADAM HAGERMAN | BRAD ROHRBAUGH | CHAD STINE
717-843-5555
www.bennettwilliams.com

Bennett Williams
RETAIL

Information shown is purported to be from reliable sources. No representation is made to the accuracy thereof, and is submitted subject to errors, omissions, change in price, prior sale, withdrawal without notice, or other conditions.