



The Landings Office Suites

5624 Whitesville Road
 Columbus, Georgia 31904

Property Highlights

- Multi-building office property
- High-visibility location on Whitesville Road
- On-site parking available
- Professional setting ideal for office or medical users

Property Overview

5624 Whitesville Road offers a multi-building office property in a convenient and well-traveled Columbus location. The site consists of several buildings, providing flexibility for a variety of users. The layout supports a mix of private offices and collaborative spaces, making it ideal for professional, medical, or administrative use.

Member(s) of the property ownership are licensed real estate

Offering Summary

Lease Rate:	\$1,000 per month (Full Service)
Building Size:	6,302 SF
Available SF:	420 SF
Lot Size:	0.88 Acres

Demographics 0.25 Miles 0.5 Miles 1 Mile

Total Households	69	404	2,197
Total Population	116	831	5,063
Average HH Income	\$71,094	\$67,341	\$75,479

For More Information

Amy D. Gill, MICP, MRP
 O: 706 660 5418 x1009
 agill@g2cre.com | GA #381793



Lease Information

Lease Type:	Full Service	Lease Term:	Negotiable
Total Space:	420 SF	Lease Rate:	\$1,000 per month

Available Spaces

Suite Tenant Size (SF) Lease Type Lease Rate Description

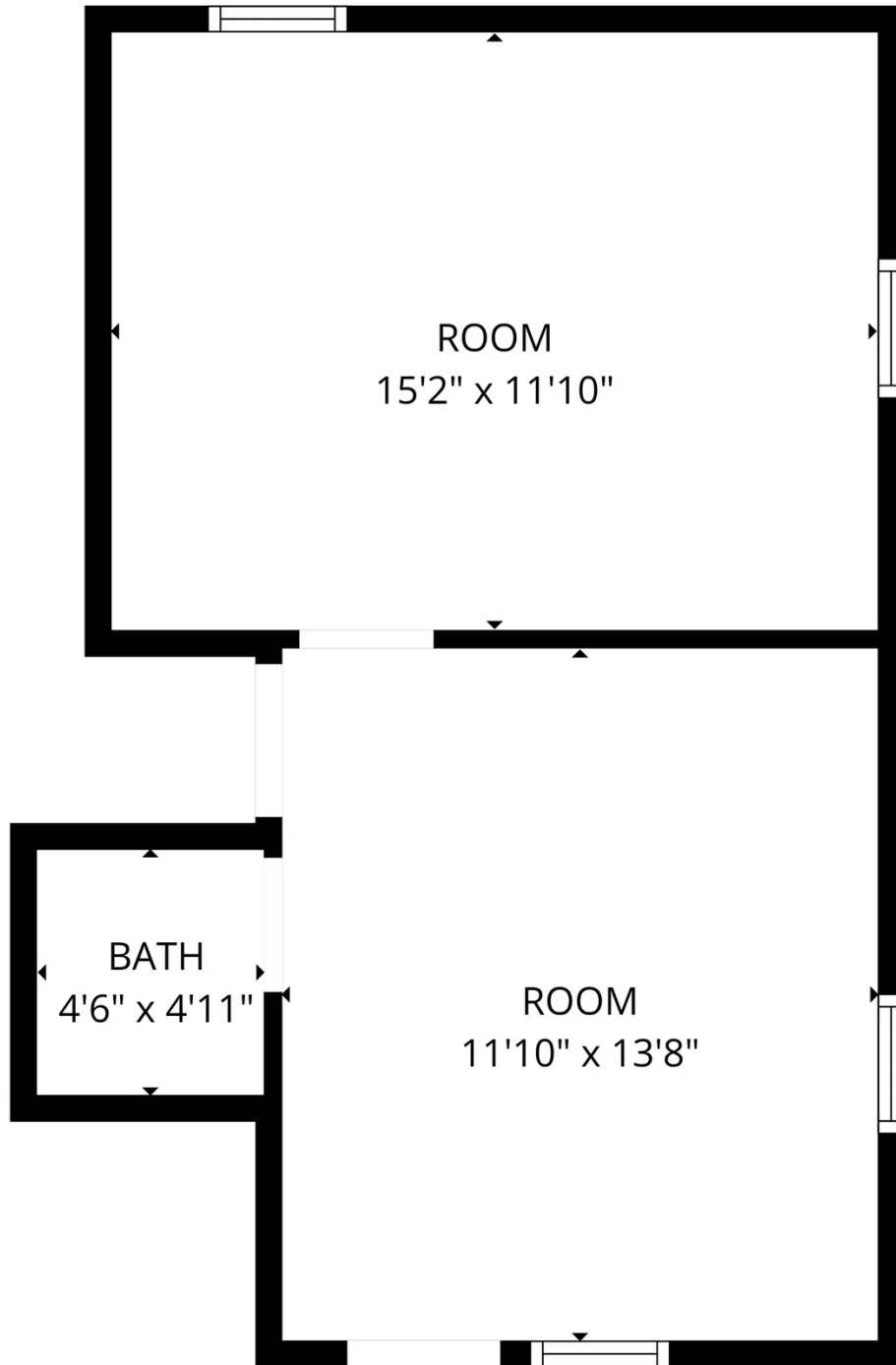
Suite	Tenant Size (SF)	Lease Type	Lease Rate	Description	
Suite D2	Available	420 SF	Full Service	\$1,000 per month	+/- 420 SF office space available featuring a functional layout with an entry/reception area, private office, and restroom. Ideal for small businesses seeking a professional and efficient workspace.



Suite D2



Suite D2



FLOOR PLAN CREATED BY CURICASA APP. MEASUREMENTS DEEMED HIGHLY RELIABLE BUT NOT GUARANTEED

Suite D2

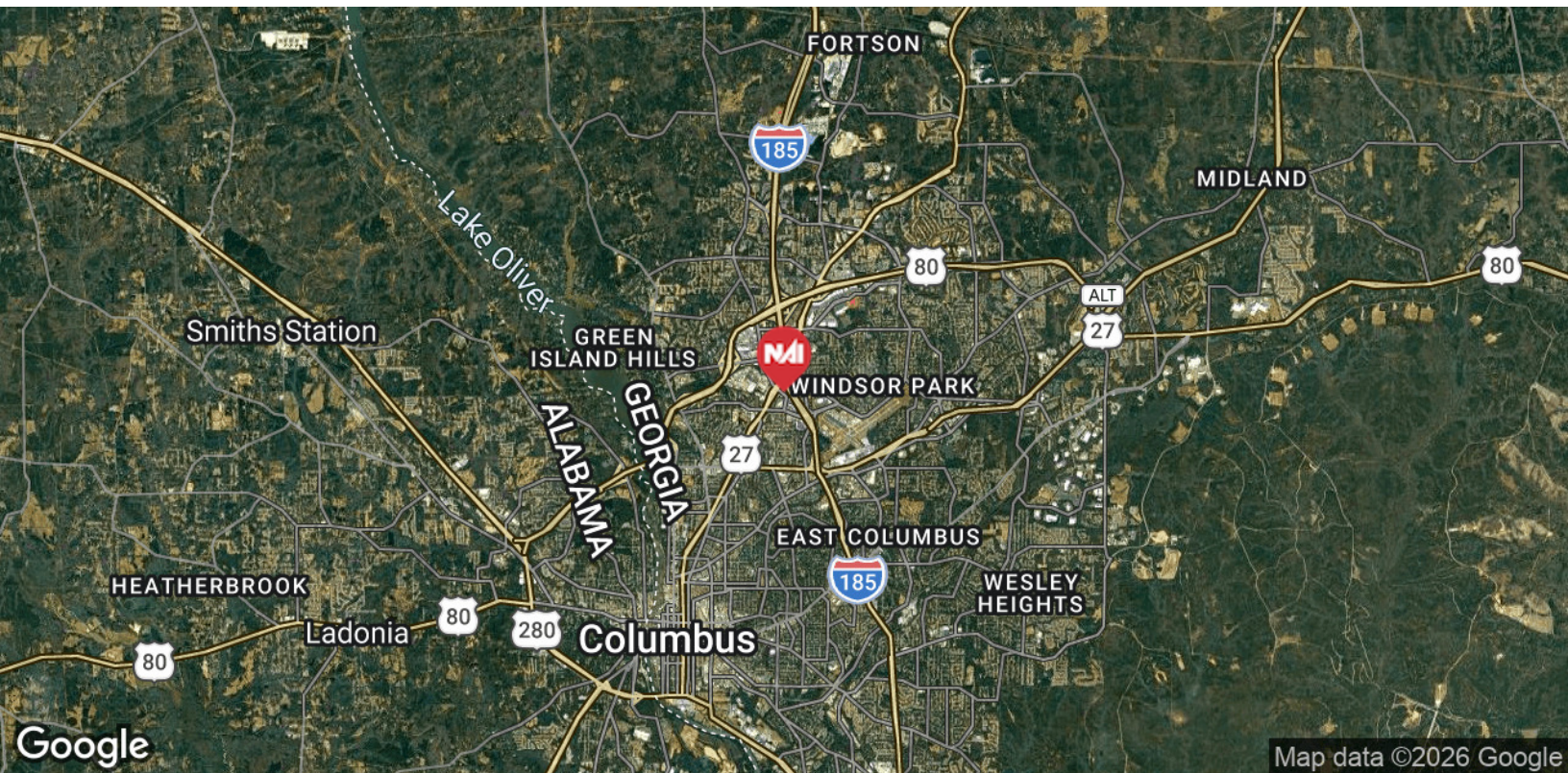
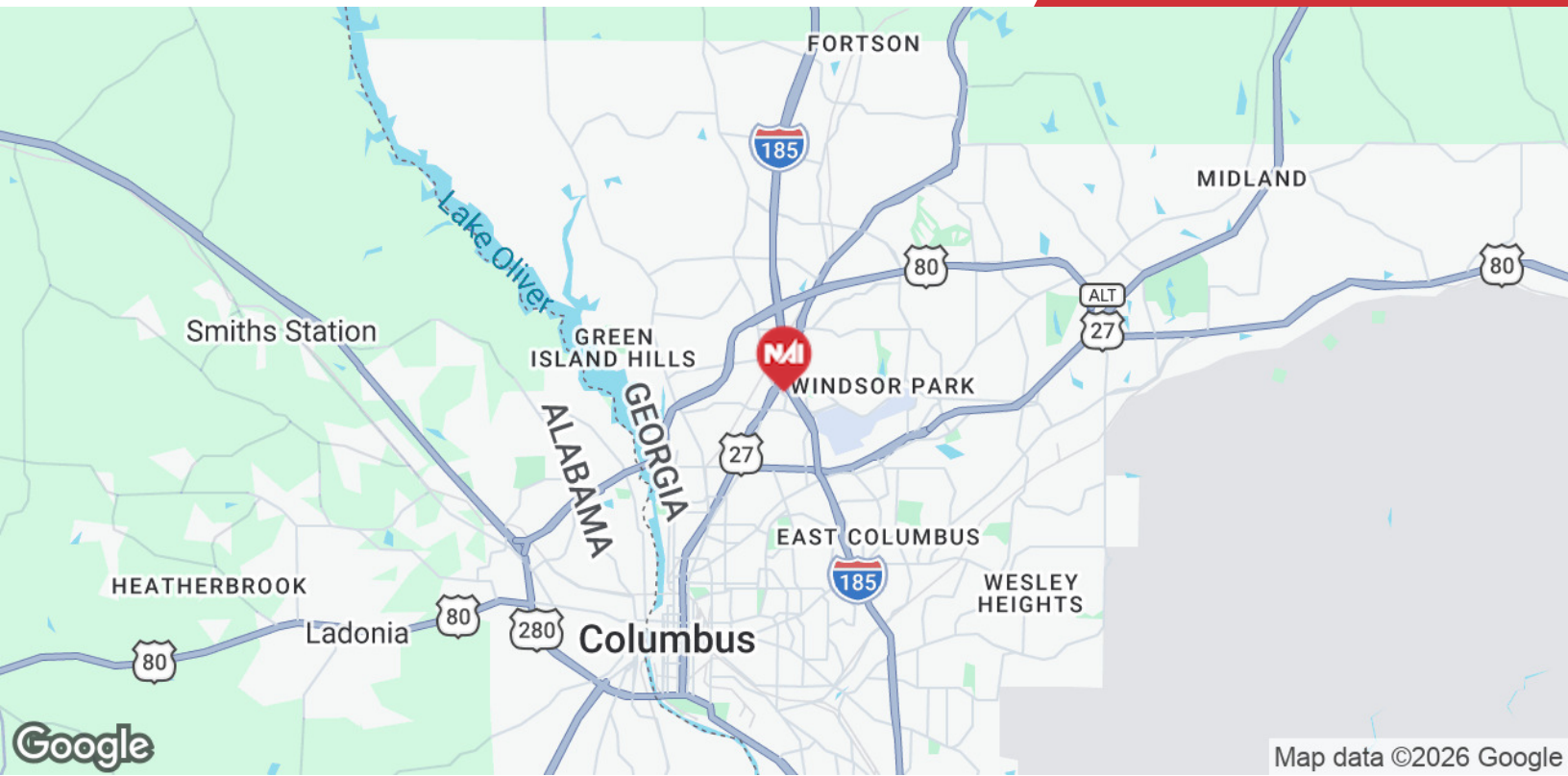
We obtained the information above from sources we believe to be reliable. However, we have not verified its accuracy and make no guarantee, warranty or representation about it. It is submitted subject to the possibility of errors, omissions, change of price, rental or other conditions, prior sale, lease or financing, or withdrawal without notice. We include projections, opinions, assumptions or estimates for example only, and they may not represent current or future performance of the property. You and your tax and legal advisors should conduct your own investigation of the property and transaction.

Post Office Box 4529
Columbus, GA 31904
706 660 5418 tel
G2cre.com



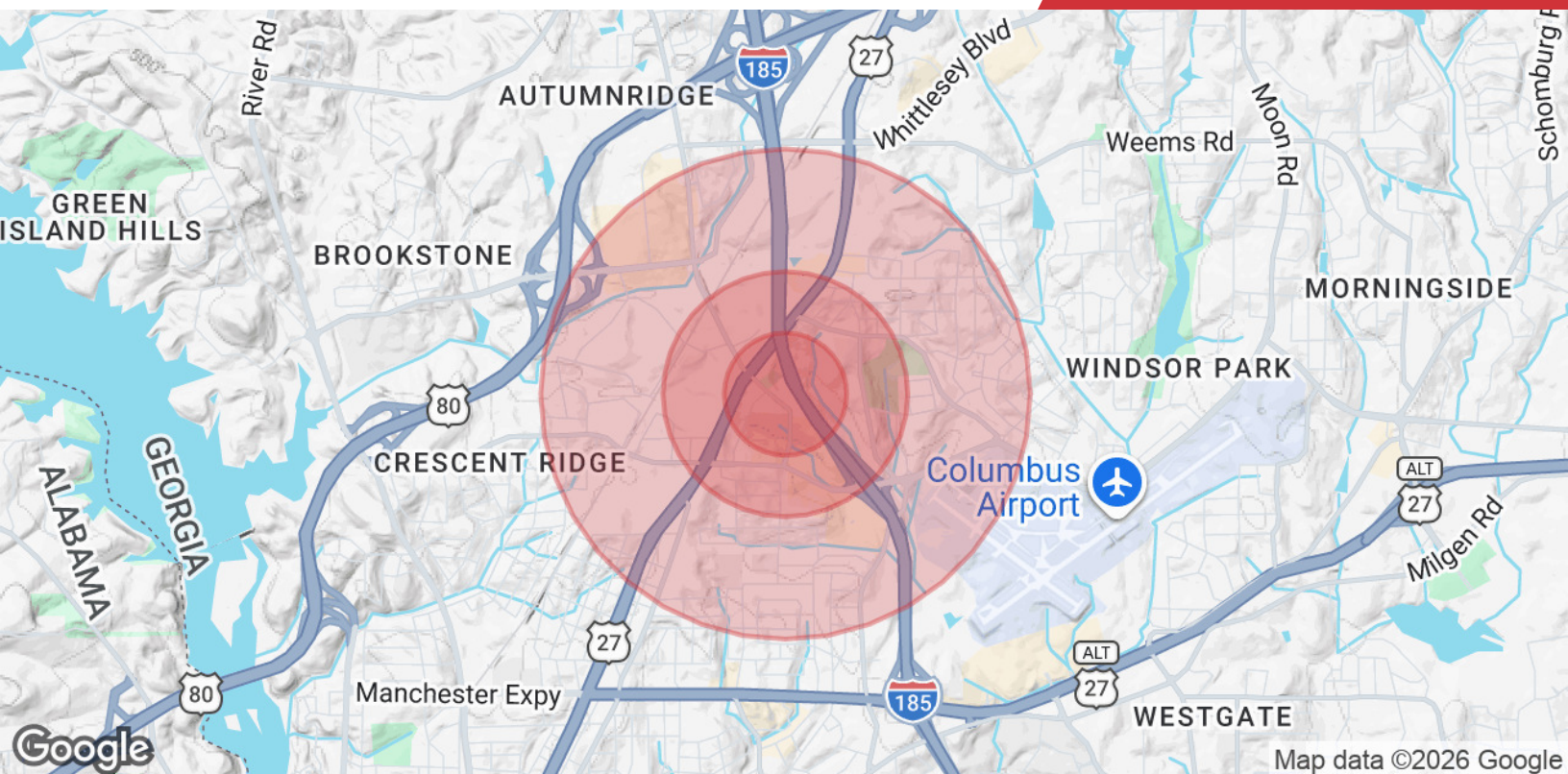
We obtained the information above from sources we believe to be reliable. However, we have not verified its accuracy and make no guarantee, warranty or representation about it. It is submitted subject to the possibility of errors, omissions, change of price, rental or other conditions, prior sale, lease or financing, or withdrawal without notice. We include projections, opinions, assumptions or estimates for example only, and they may not represent current or future performance of the property. You and your tax and legal advisors should conduct your own investigation of the property and transaction.

Post Office Box 4529
 Columbus, GA 31904
 706 660 5418 tel
G2cre.com



We obtained the information above from sources we believe to be reliable. However, we have not verified its accuracy and make no guarantee, warranty or representation about it. It is submitted subject to the possibility of errors, omissions, change of price, rental or other conditions, prior sale, lease or financing, or withdrawal without notice. We include projections, opinions, assumptions or estimates for example only, and they may not represent current or future performance of the property. You and your tax and legal advisors should conduct your own investigation of the property and transaction.

Post Office Box 4529
Columbus, GA 31904
706 660 5418 tel
G2cre.com



Population	0.25 Miles	0.5 Miles	1 Mile
Total Population	116	831	5,063
Average Age	35.1	34.9	35.9
Average Age (Male)	31.6	35.2	35.8
Average Age (Female)	36.5	33.0	35.5
Households & Income	0.25 Miles	0.5 Miles	1 Mile
Total Households	69	404	2,197
# of Persons per HH	1.7	2.1	2.3
Average HH Income	\$71,094	\$67,341	\$75,479
Average House Value	\$110,019	\$166,221	\$171,281

2023 American Community Survey (ACS)

Owner Disclosure Notice

Member(s) of the property ownership are licensed real estate professionals in the State of Georgia, and hold an ownership interest in the property being advertised.