



# HIGHPOINT CENTER

## 12225 GREENVILLE AVE

### DALLAS, TX 75243



#### BUILDING INFORMATION

- Move-in Ready Suites ranging from 1,000 - 27,441 RSF
- Fully renovated in 2015
- 10 Story Office Tower
- 5:1,000 Surface Parking Ratio
- 7 Story Parking Garage (Free of Charge)
- Multiple Fiber Providers Available
- Access Control System
- Suites available with Private Balconies!



#### AMENITIES

- Fitness Center
- Tenant Lounge
- Conference Center
- On-site Management
- On-site Security



#### LOCATION

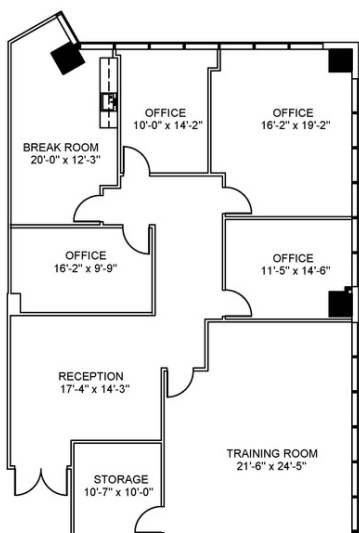
- DART Access on-site
- Great Access to LBJ Frwy & US-75
- Minutes from Royal Oak Country Club
- Near Preston Hollow Village

## CONTACT INFO:

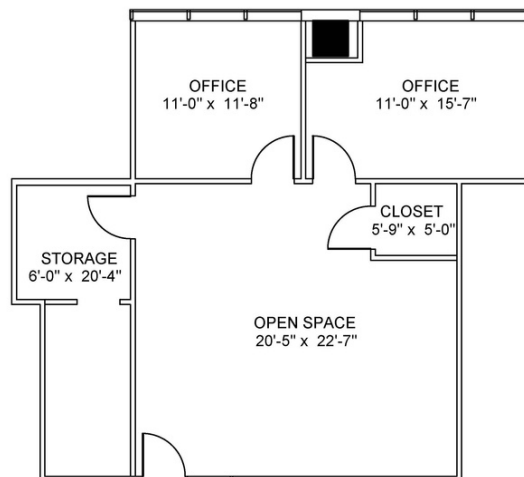
GRANT GOMEZ  
GRANT@TXREPROPERTIES.COM  
214-734-4725

KOLBY DICKERSON  
KDICKERSON@TXREPROPERTIES.COM  
214-534-1599



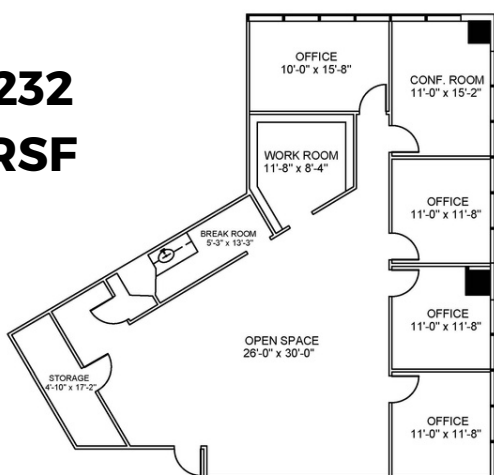


**Suite 270**  
**1,159 RSF**



**Suite 434**  
**2,696 RSF**

**Suite 232**  
**2,393 RSF**



**Suite 930**  
**2,983 RSF**



**LEASING INFORMATION**

**GRANT GOMEZ**  
**GRANT@TXREPROPERTIES.COM**  
**214-734-4725**

**KOLBY DICKERSON**  
**KDICKERSON@TXREPROPERTIES.COM**  
**214-534-1599**

