

# 1035 Commonwealth Avenue BOSTON, MA



6,506 SF

# LOCATION OVERVIEW

Boston Realty Advisors is exclusively retained to offer for lease, 1035 Commonwealth Avenue in Boston, MA. 1035 Commonwealth Avenue consists of a 6,506 square foot asset located on one of the most recognizable University campus' in the world, Boston University. Positioned as a campus oriented retail asset, the property is available for lease ideally being an amenity for the luxury apartments above & surrounding residents.

Allston has consistently drawn service-oriented retailers aiming to gain visibility along one of the city's liveliest and most bustling corridors. Situated on the Boston University campus, the property benefits from inherent demand stemming from 37,000 students, 10,000 faculty and staff, and tens of thousands of annual visitors. Additionally, the property enjoys a prime location along Commonwealth Avenue as it sits diagonally across from the Pleasant Street MBTA Green Line T-stop.



# LOCATION PROFILE

**TRANSIT ORIENTED:**

1035 Commonwealth is located diagonally across the street from the MBTA Green Line providing tenants and their customers immediate access to the property and co-tenancy in the area.

**BOSTON UNIVERSITY:**

Boston University is one of the most prominent Universities in the world providing undergraduate and graduate student programs. The University has 37,000 students and hundreds of thousands of visitors annually. 1035 Commonwealth Avenue benefits from being located just off the campus.

**STRONG COTENANCY:**

1035 Commonwealth offers interested parties to join best in class retailers spanning from local legends, regional players, and national groups. All drawn to the strong demographics & spending power found on Commonwealth 1035 presents the opportunity to join groups like Hopewell Bar + Kitchen, Star Market, Raising Cane’s, Herb Chambers, Starbucks, El Jefe’s, Tatte, and many more!



# 1035 COMMONWEALTH BY THE NUMBERS

WALKER'S PARADISE



**98**  
WALK SCORE

BIKER'S PARADISE



**96**  
BIKE SCORE

MEDIAN AGE



**29**

AVERAGE HOUSEHOLD INCOME



**\$131,000**

WORKDAY POPULATION 1 MILE



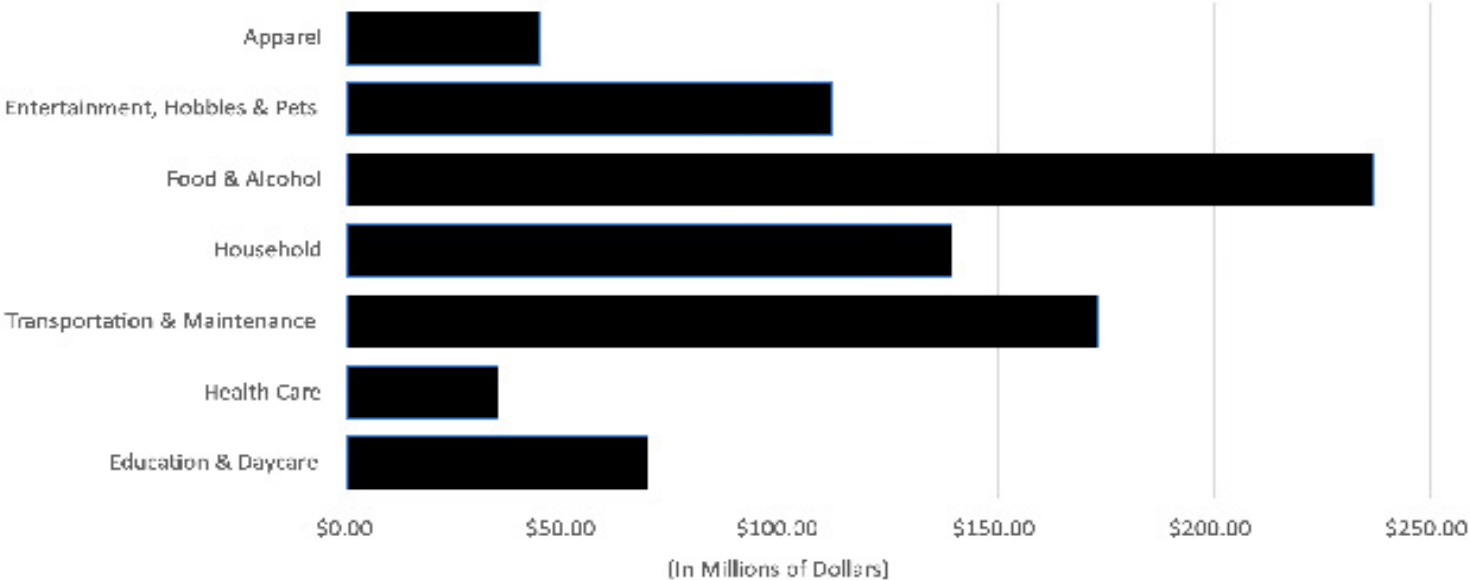
**77,000**

CONSUMER SPENDING 1 MILE

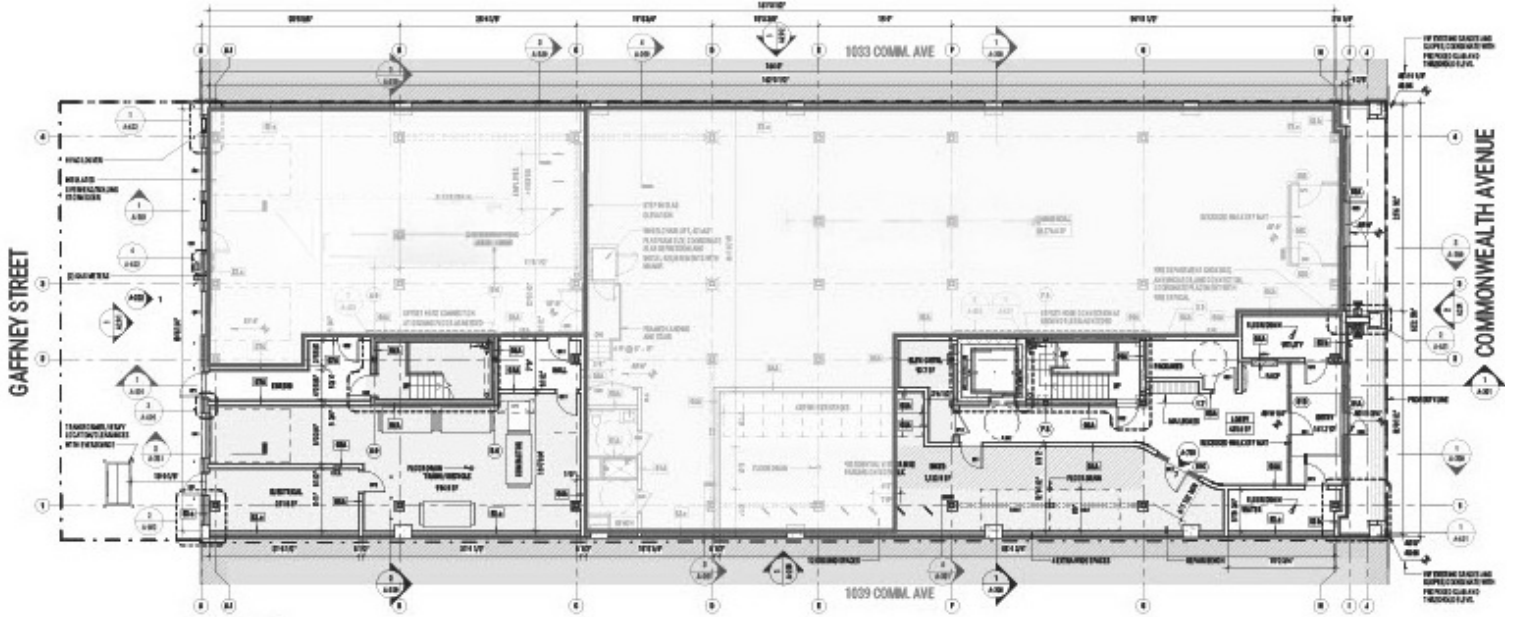


**\$1.5B**

CONSUMER SPENDING (1 MILE RADIUS)



# 1035 Commonwealth Avenue BOSTON, MA



6,506 SF



**RETAIL**

**WHITNEY GALLIVAN**  
 Managing Director & Partner  
 617.850.9612  
 wgallivan@bradvisors.com

**JOE WAGNER**  
 Managing Director  
 617.850.9675  
 jwagner@bradvisors.com

**HARRISON DEMERITT**  
 Associate Director  
 617.223.1486  
 hdemeritt@bradvisors.com

**GUS HOFFMANN**  
 Retail Associate  
 617.448.9675  
 ahoffmann@bradvisors.com



136 Newbury Street | Boston, MA | 617.375.7900 | BRAdvisors.com