

**OFFICE SPACE IN MARYLAND FARMS**

*for lease*



*for more information, contact*

 **SOUTHEAST VENTURE**  
615.833.8716 / [southeastventure.com](http://southeastventure.com)

**TOM CORCORAN**

615.351.9254

[tcorcoran@southeastventure.com](mailto:tcorcoran@southeastventure.com)

**MICHAEL FINUCANE**

615.250.8671

[mfinucane@southeastventure.com](mailto:mfinucane@southeastventure.com)

# AT-A-GLANCE



## **PRIME** Maryland Farms Location

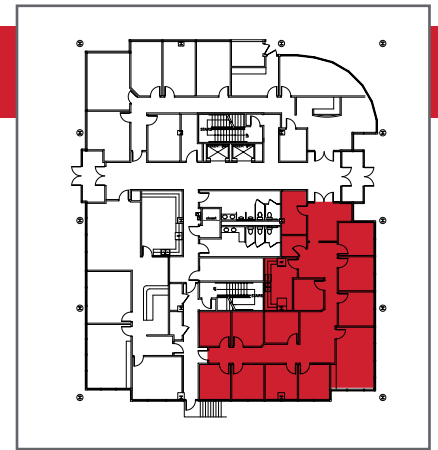
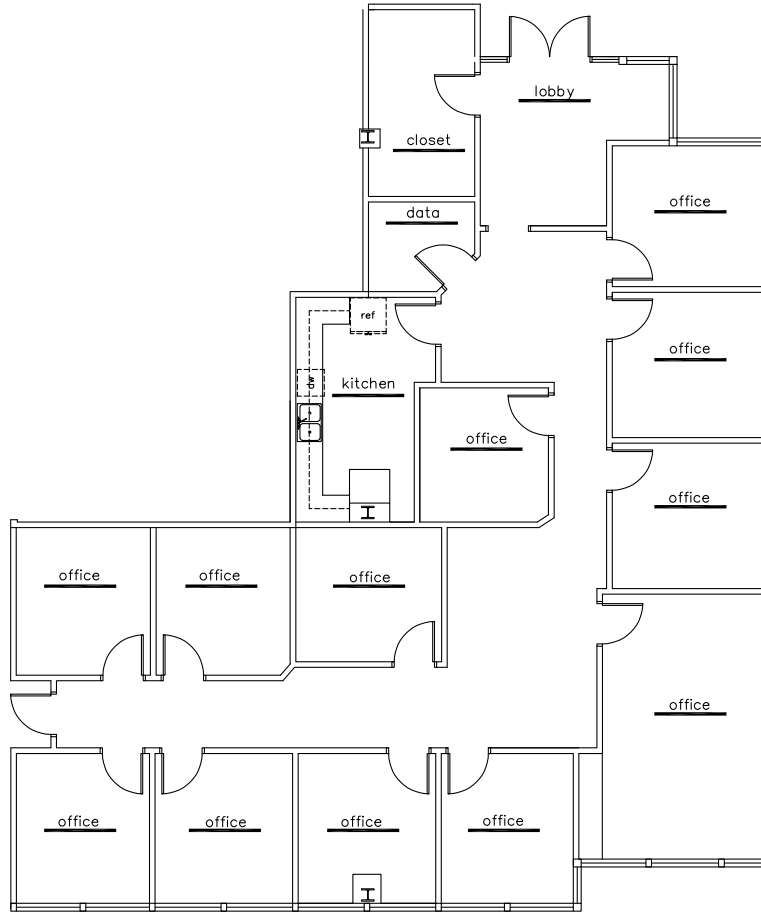
Fronting Old Hickory Blvd.

<b>ADDRESS</b>	103 Continental Place Brentwood, TN 37027
<b>SUBMARKET</b>	Maryland Farms
<b>USE</b>	Office
<b>SF AVAILABLE</b>	see attached plans
<b>RATE</b>	\$31 PSF
<b>PARKING</b>	4:1000

# 1ST FLOOR / SUITE 120

2,886 SF

Available September 2026



*for more information, contact*

**TOM CORCORAN**

615.351.9254

tcorcoran@southeastventure.com

**MICHAEL FINUCANE**

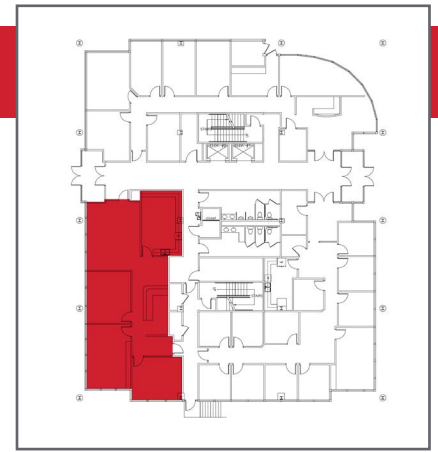
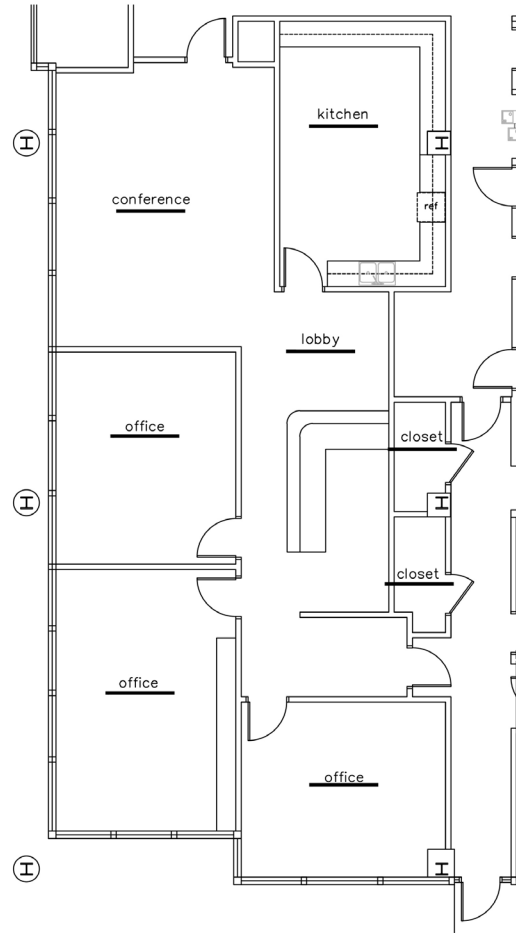
615.250.8671

mfinucane@southeastventure.com

# 1ST FLOOR

2,120 SF

Available October 1, 2026



*for more information, contact*

**TOM CORCORAN**

615.351.9254

[tcorcoran@southeastventure.com](mailto:tcorcoran@southeastventure.com)

**MICHAEL FINUCANE**

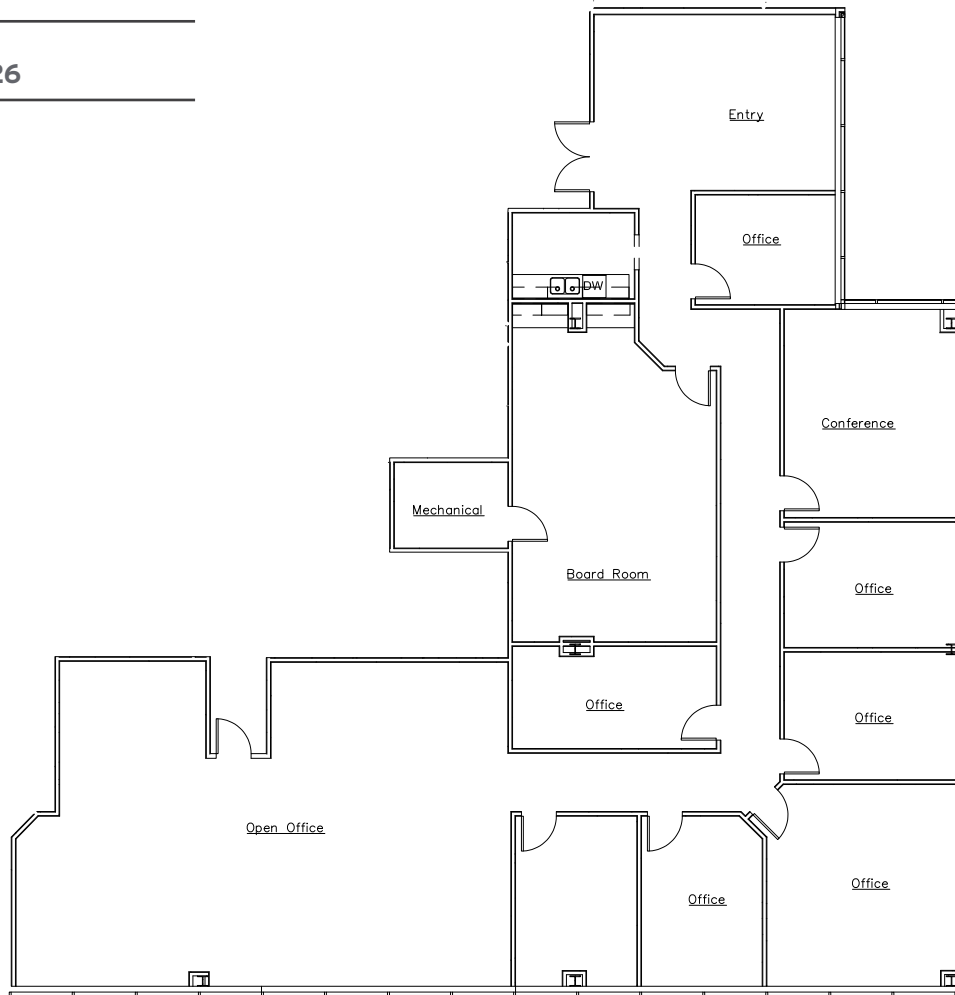
615.250.8671

[mfinucane@southeastventure.com](mailto:mfinucane@southeastventure.com)

# 2ND FLOOR / SUITE 202

4,768 SF

Available September 2026



*for more information, contact*



**TOM CORCORAN**

615.351.9254

tcorcoran@southeastventure.com

**MICHAEL FINUCANE**

615.250.8671

mfinucane@southeastventure.com