

7642 BELAIR ROAD

PLUG & PLAY MEDICAL SUBLEASE



Space Highlights

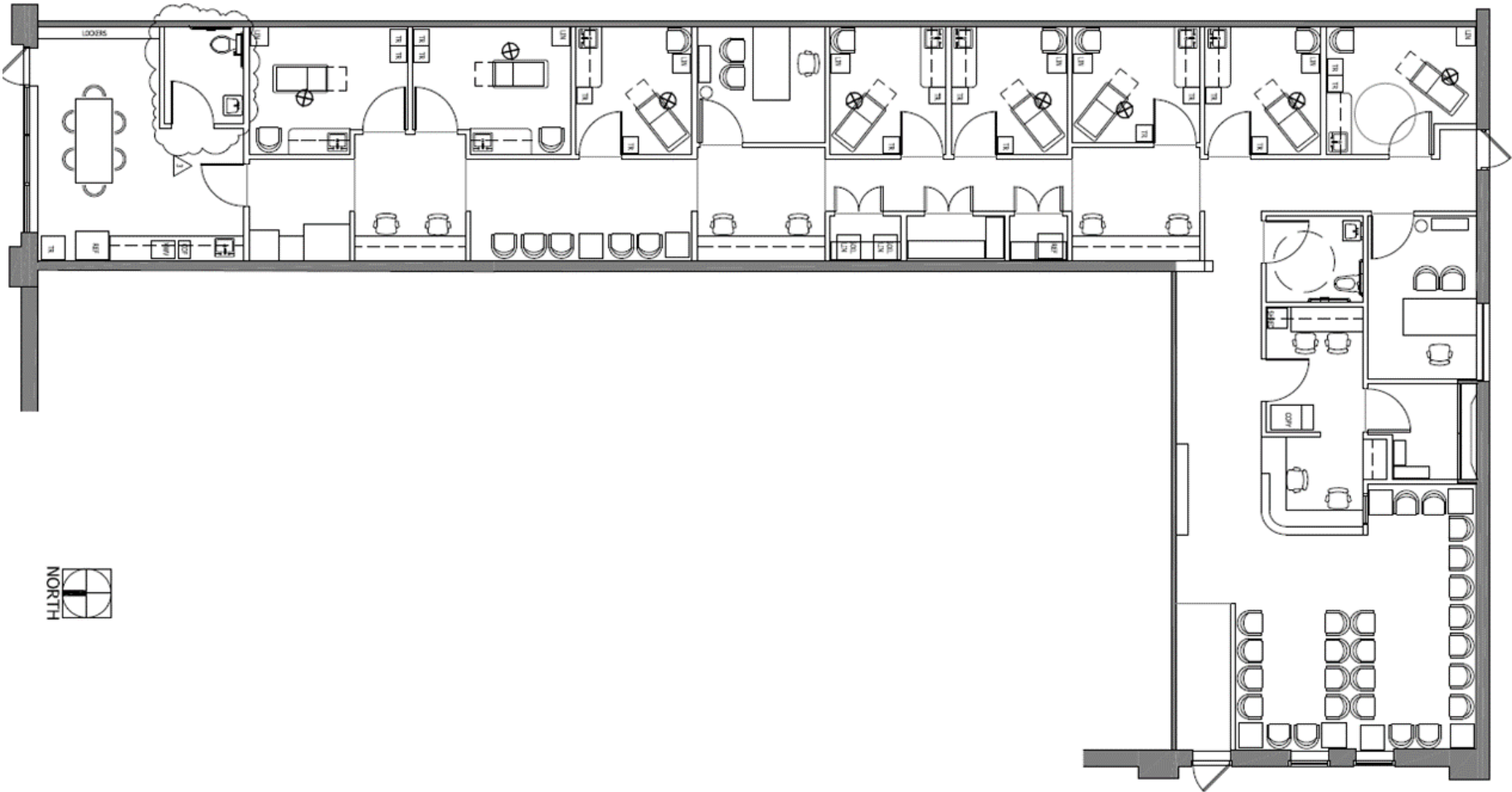
- 3,466 RSF
- Available September 1, 2025
- Term through June 30, 2028
- Current Medical/Cosmetic Dermatology Practice
- High Level Finishes and Architectural Detailing
- Some Furniture, Fixtures and Medical Equipment Convey
- First Floor Exclusive Entrance

Building Highlights

- Conveniently located right off Exit 32A – Belair Road/Overlea
- Free and Abundant Parking
- Adjacent to Mercy Personal Physicians - Overlea



FLOOR PLAN



RECEPTION AREA



WAITING AREA



DOCTOR OFFICE



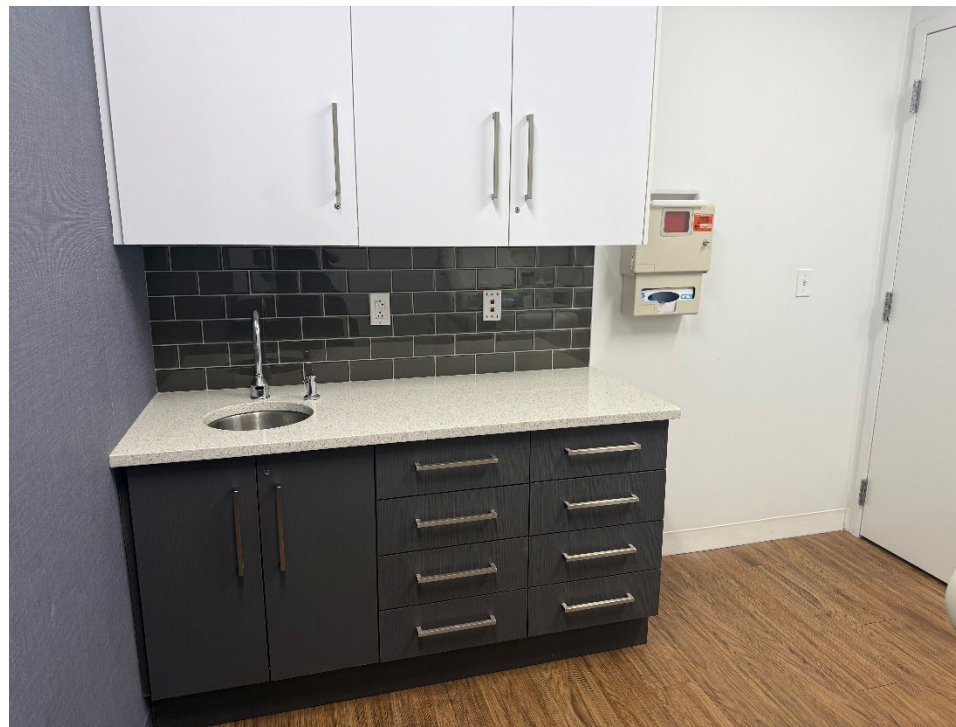
PA OFFICE



ADMINISTRATIVE AREAS



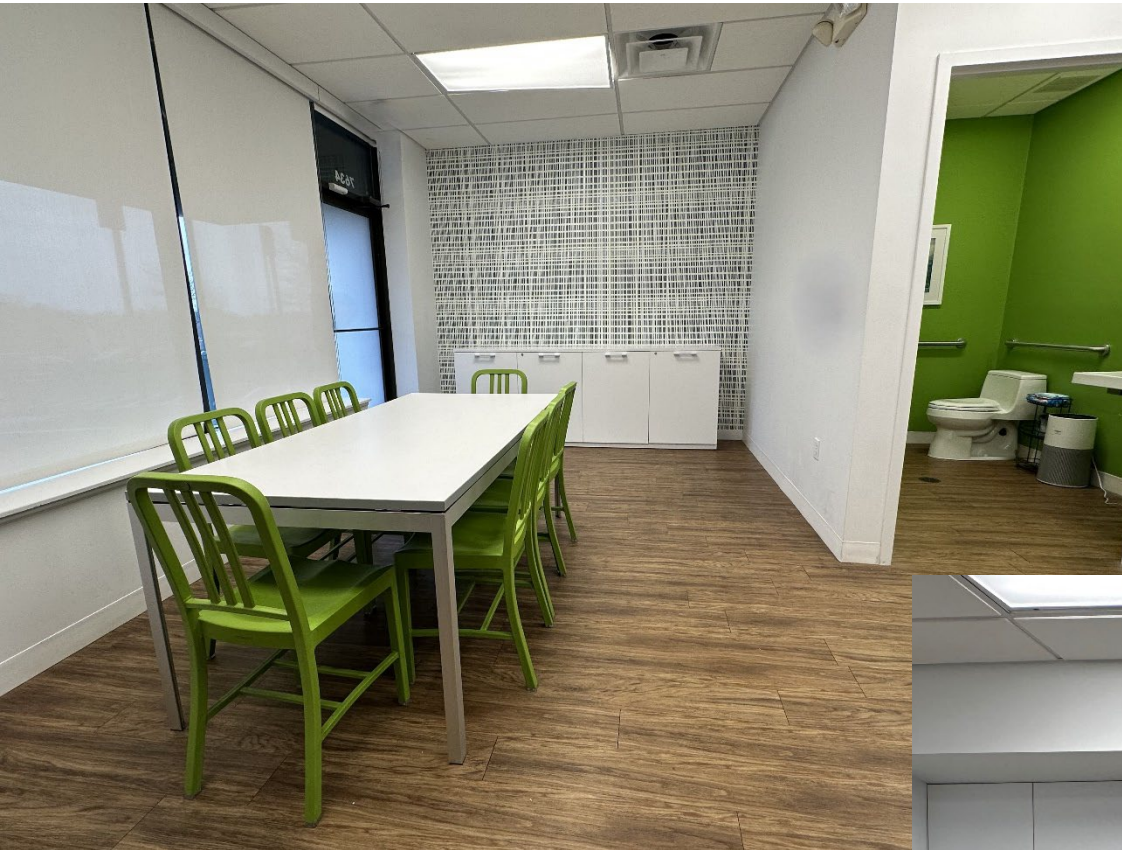
TREATMENT ROOMS



RESTROOMS



LUNCH ROOM





LEASING CONTACT:

Bronwyn E. LeGette
Senior Director
bronwyn.legette@cushwake.com
m +1 410 627 2791

Alexander W. Mitchell
Director
alexander.mitchell@cushwake.com
M + 1 410 952 1591