

NORTH TEXAS PROFESSIONAL BLDG

2817 S Mayhill Rd
Denton, TX 76208

Office Medical For Lease

1,498 - 6,641 SF



Leasing Information:
214.461.2388

Lincoln

Banks Newton 214.461.2388 bnewton@lpc.com	Peter Shaw 214.461.2302 Pshaw@lpc.com	Elizabeth Madden 214.461.2366 emadden@lpc.com
--	--	--

8140 Walnut Hill Lane
Suite 700
Dallas, TX 75231

www.lpc.com

NORTH TEXAS PROFESSIONAL BLDG

2817 S Mayhill Rd | Denton, TX 76208

Office Medical For Lease

1,498 - 6,641 SF



Property Overview

The North Texas Professional Building is a 42,000 square foot institutionally owned medical office building in Denton, TX. The building is located off of I-35E (116,329 VPD) and Mayhill Road (12,414 VPD), and on the campus of The Baylor Scott & White Heart Hospital. The building has multiple 2nd generation medical office suites, as well as shell space.

Property Highlights

- Customizable Suites
- Generous TI Allowances
- Great Tenant Mix
- Ample Parking

Availabilities	SF
Suite 105	3,491 SF
Suite 115	3,954 SF
Suite 200	6,641 SF
Suite 260	1,498 - 6,260 SF
Suite 270	4,762 - 6,260 SF

Banks Newton

214.461.2388
bnewton@lpc.com

Peter Shaw

214.461.2302
PShaw@lpc.com

Elizabeth Madden

214.461.2366
emadden@lpc.com

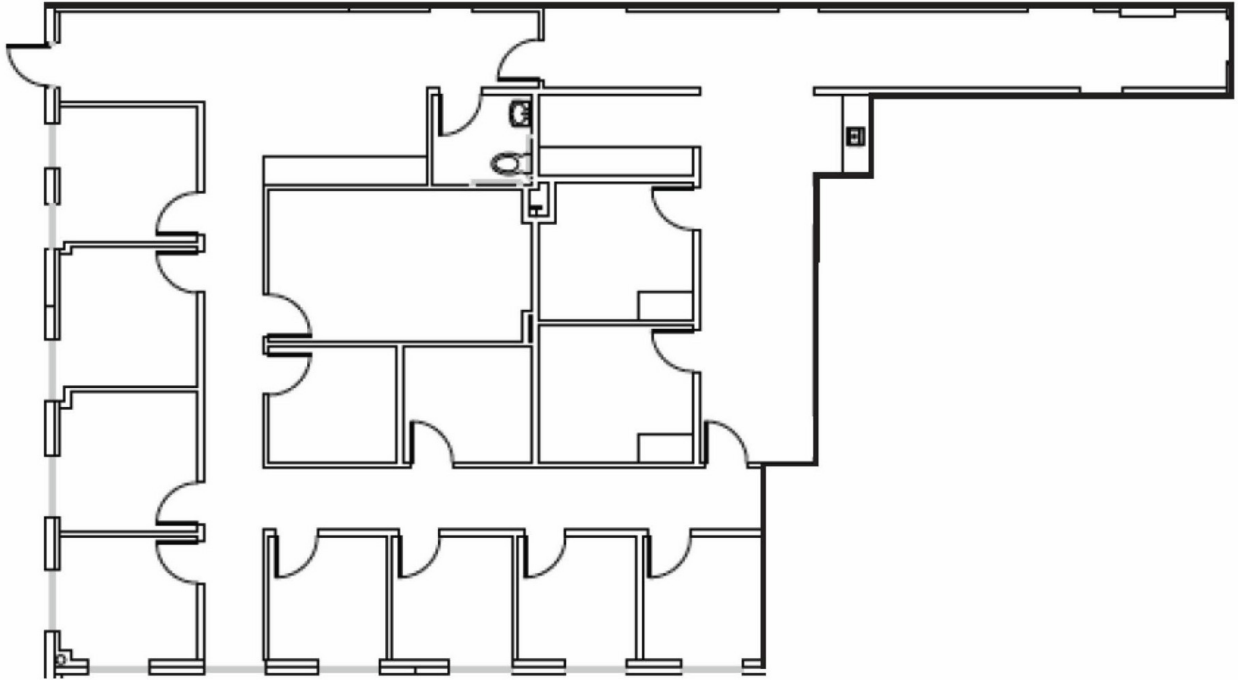
Lincoln

NORTH TEXAS PROFESSIONAL BLDG

2817 S Mayhill Rd | Denton, TX 76208

Suite 105

3,491 SF



Suite

Suite 105

Size

3,491 SF

Banks Newton

214.461.2388
bnewton@lpc.com

Peter Shaw

214.461.2302
PShaw@lpc.com

Elizabeth Madden

214.461.2366
emadden@lpc.com

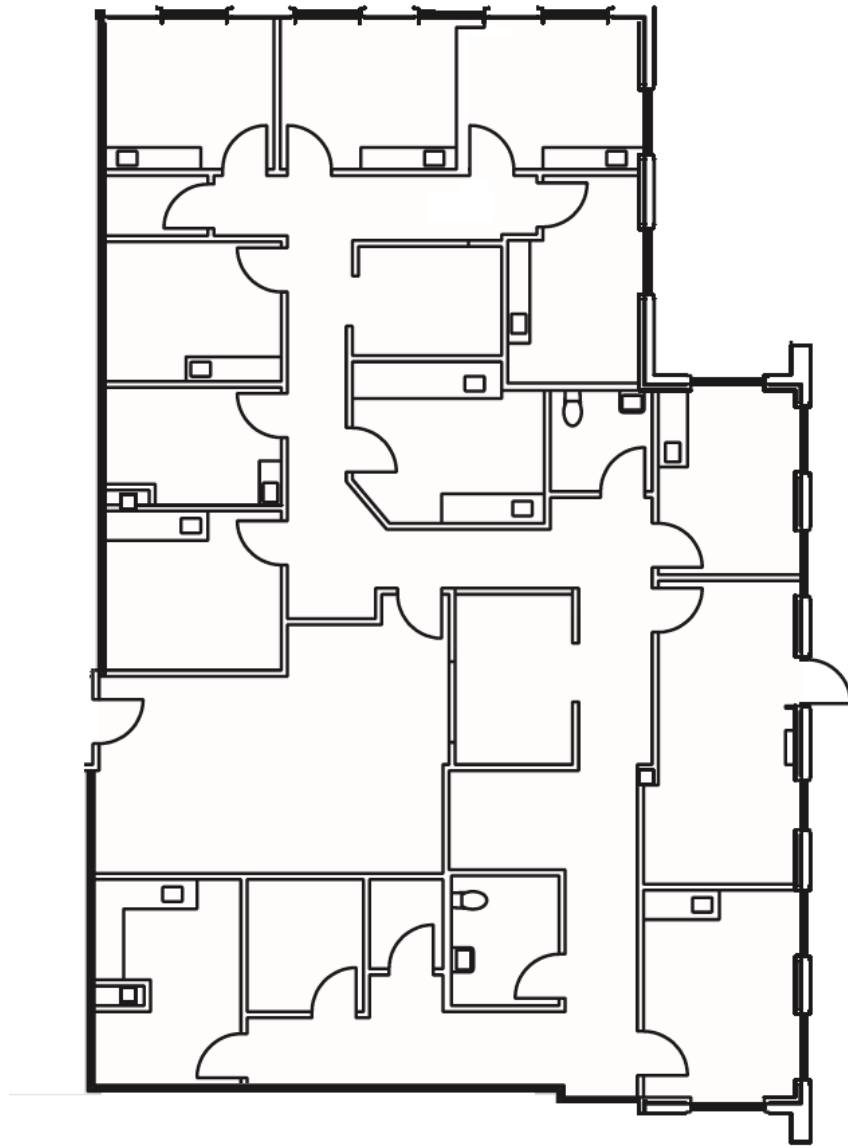
Lincoln

NORTH TEXAS PROFESSIONAL BLDG

2817 S Mayhill Rd | Denton, TX 76208

Suite 115

3,954 SF



Suite

Suite 115

Size

3,954 SF

Banks Newton

214.461.2388
bnewton@lpc.com

Peter Shaw

214.461.2302
PShaw@lpc.com

Elizabeth Madden

214.461.2366
emadden@lpc.com

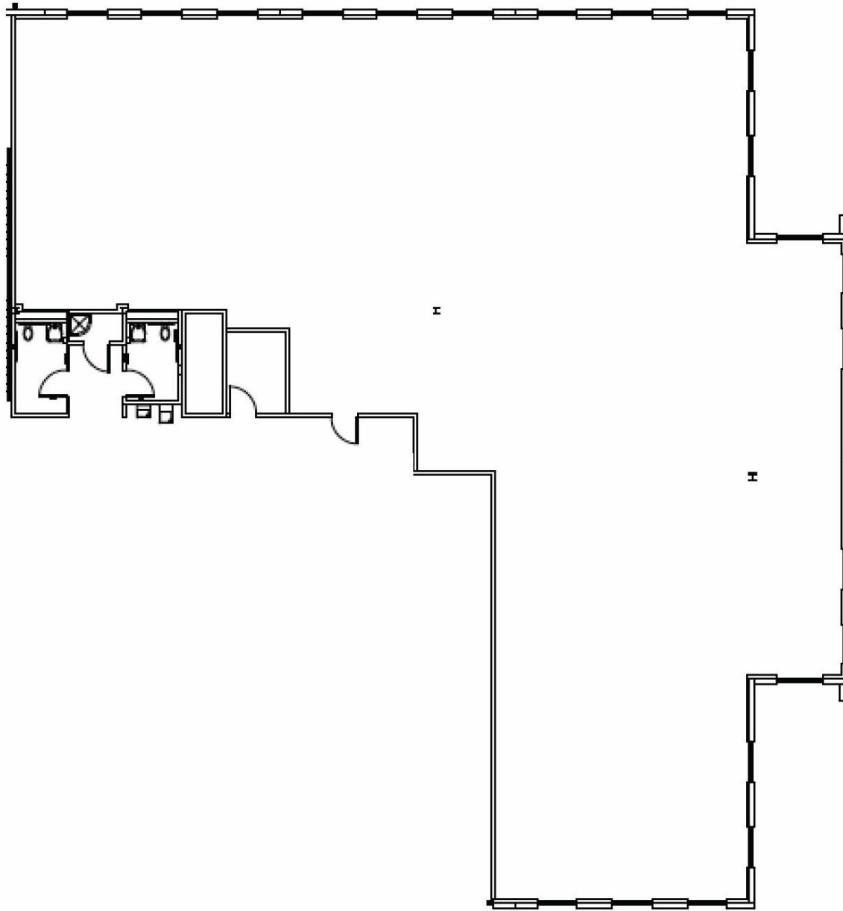
Lincoln

NORTH TEXAS PROFESSIONAL BLDG

2817 S Mayhill Rd | Denton, TX 76208

Suite 200

6,641 SF



Suite	Size
Suite 200	6,641 SF

Banks Newton

214.461.2388
bnewton@lpc.com

Peter Shaw

214.461.2302
PShaw@lpc.com

Elizabeth Madden

214.461.2366
emadden@lpc.com

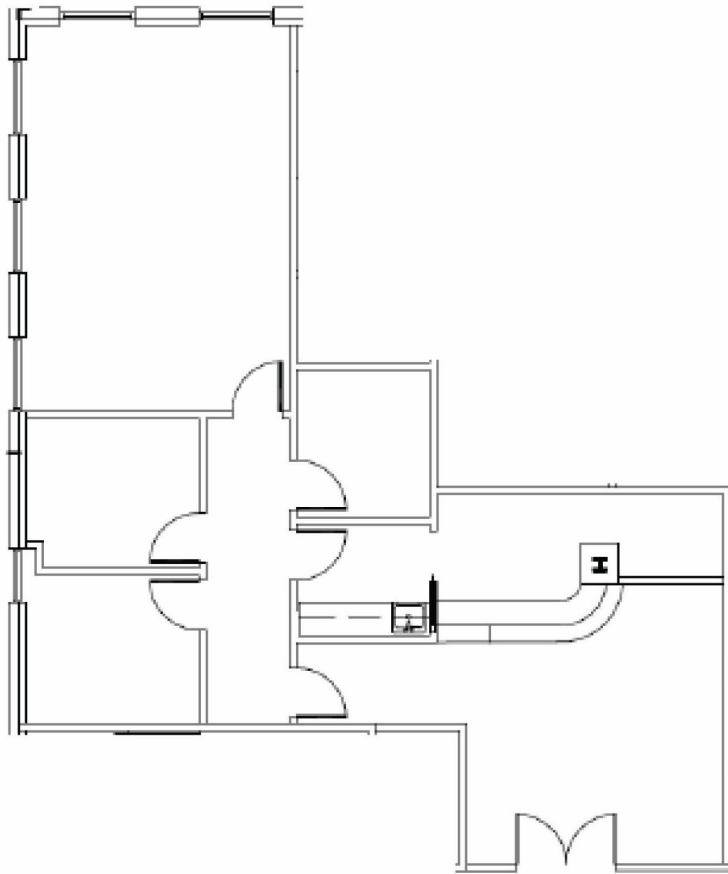
Lincoln

NORTH TEXAS PROFESSIONAL BLDG

2817 S Mayhill Rd | Denton, TX 76208

Suite 260

1,498 - 6,260 SF



Suite

Suite 260

Size

1,498 - 6,260 SF

Banks Newton

214.461.2388
bnewton@lpc.com

Peter Shaw

214.461.2302
PShaw@lpc.com

Elizabeth Madden

214.461.2366
emadden@lpc.com

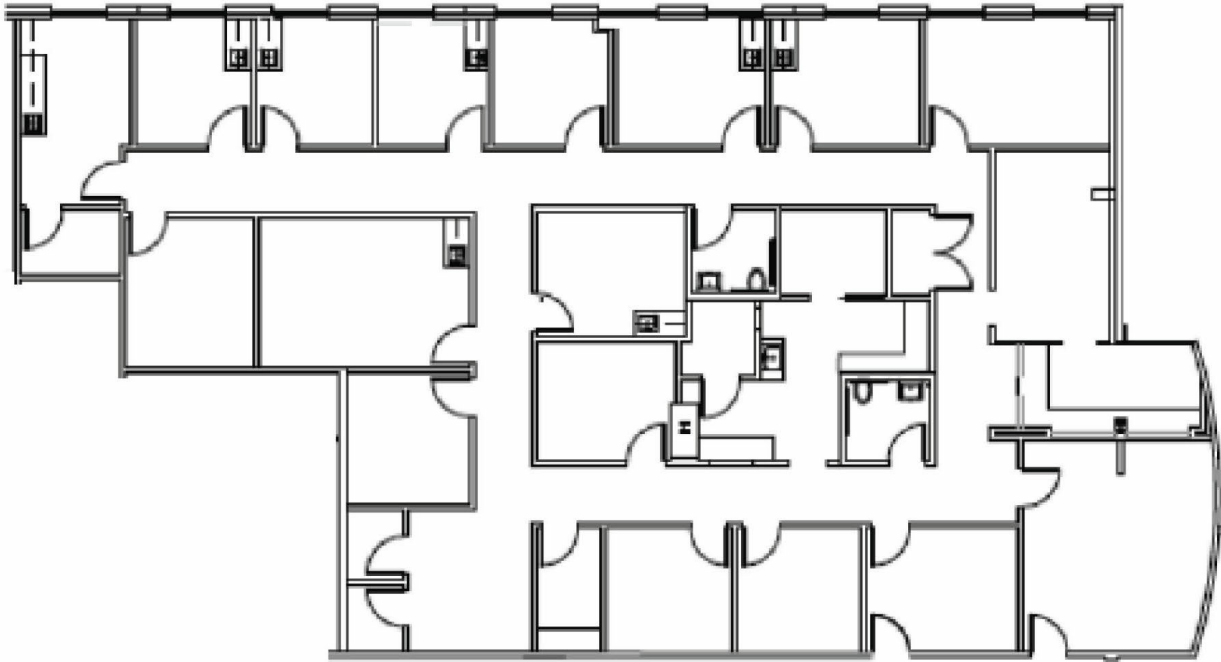
Lincoln

NORTH TEXAS PROFESSIONAL BLDG

2817 S Mayhill Rd | Denton, TX 76208

Suite 270

4,762 - 6,260 SF



Suite

Suite 270

Size

4,762 - 6,260 SF

Banks Newton

214.461.2388
bnewton@lpc.com

Peter Shaw

214.461.2302
PShaw@lpc.com

Elizabeth Madden

214.461.2366
emadden@lpc.com

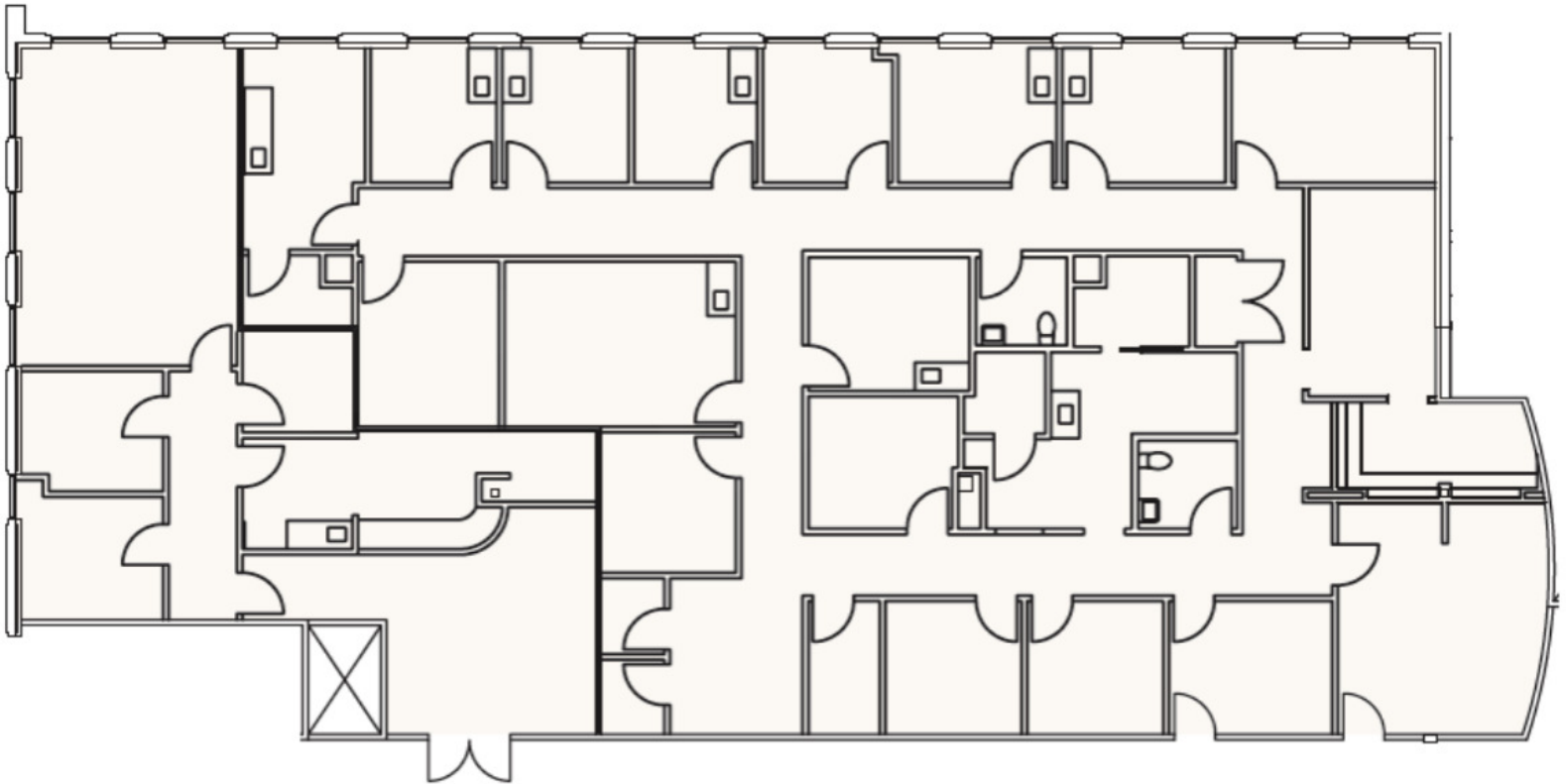
Lincoln

NORTH TEXAS PROFESSIONAL BLDG

2817 S Mayhill Rd | Denton, TX 76208

Suite 260 & 270

1,498 - 6,260 SF



Suite	Size
Suite 260	1,498 - 6,260 SF
Suite 270	4,762 - 6,260 SF

Banks Newton

214.461.2388
bnewton@lpc.com

Peter Shaw

214.461.2302
PShaw@lpc.com

Elizabeth Madden

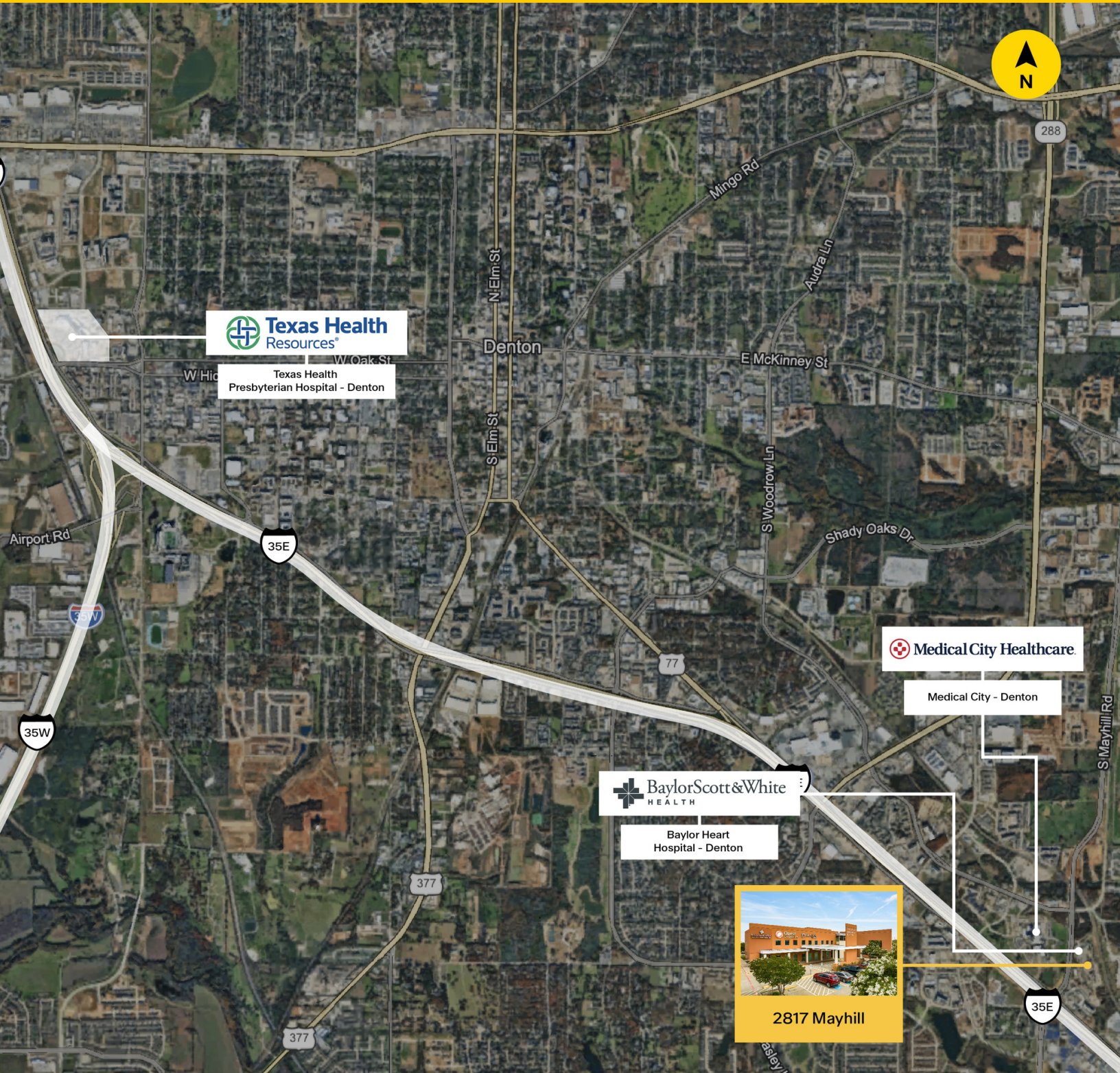
214.461.2366
emadden@lpc.com

Lincoln

NORTH TEXAS PROFESSIONAL BLDG

2817 S Mayhill Rd | Denton, TX 76208

Location Map
1,498 - 6,641 SF



Banks Newton

214.461.2388
bnewton@lpc.com

Peter Shaw

214.461.2302
PShaw@lpc.com

Elizabeth Madden

214.461.2366
emadden@lpc.com

Lincoln



NORTH TEXAS PROFESSIONAL BLDG

2817 S Mayhill Rd
Denton, TX 76208

Leasing Information:
214.461.2388

Banks Newton
214.461.2388
bnewton@lpc.com

Peter Shaw
214.461.2302
PShaw@lpc.com

Elizabeth Madden
214.461.2366
emadden@lpc.com

Lincoln

8140 Walnut Hill Lane
Suite 700
Dallas, TX 75231

www.lpc.com