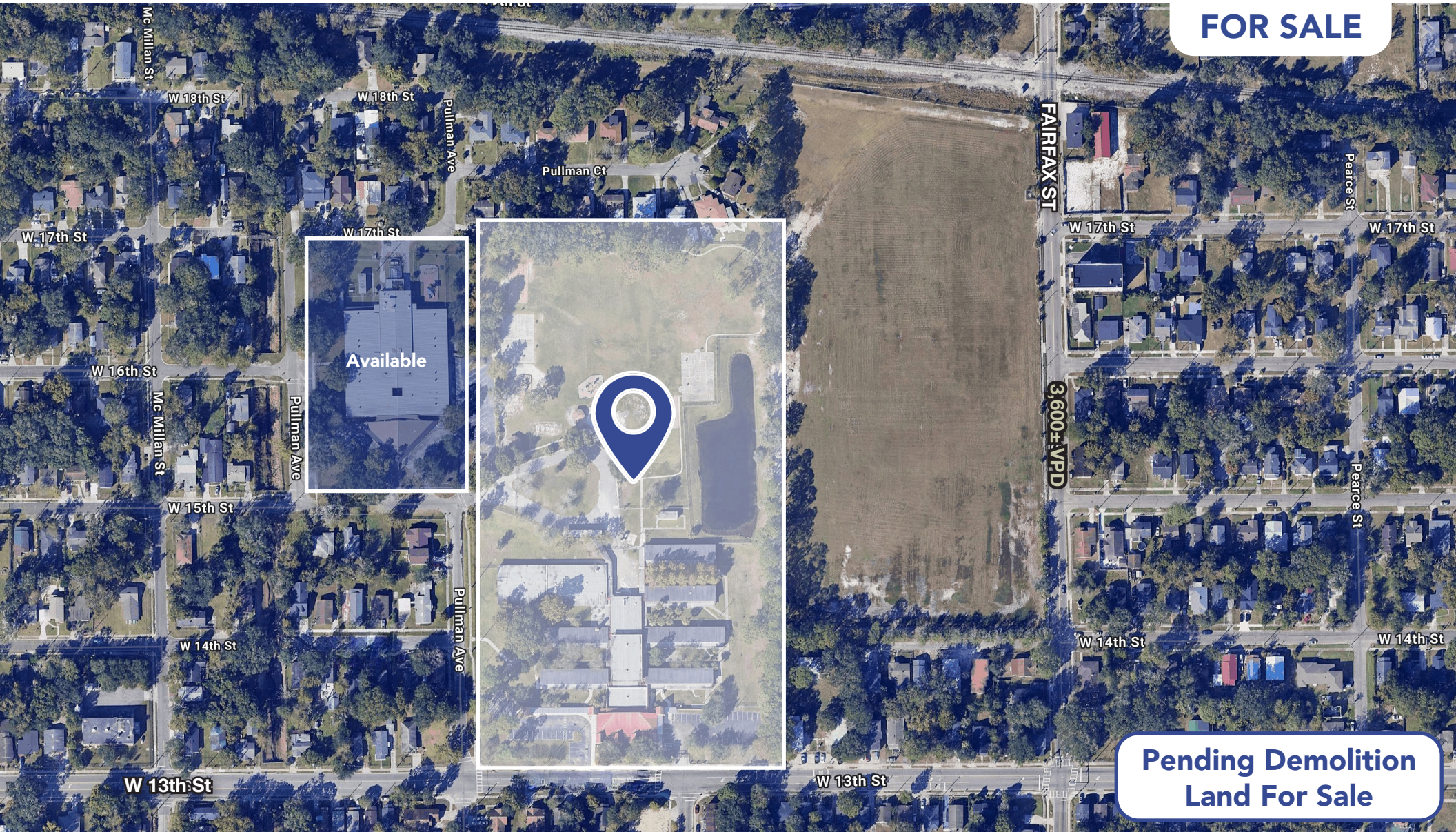


# FORMER SUSIE E. TOLBERT SCHOOL

1925 W 15TH ST, JACKSONVILLE, FL 32209

**FOR SALE**



Available

**Pending Demolition  
Land For Sale**



**Clint Betlock**  
Senior Advisor  
904.629.7541  
Clint.Betlock@TrinityCRE.com

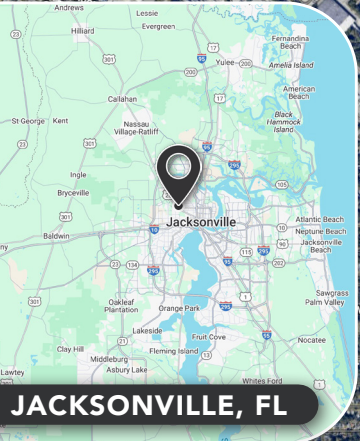
**Rick Ikeler**  
Senior Advisor  
239.334.3040  
Rick.Ikeler@TrinityCRE.com

**Anthony Gambino**  
Associate  
239.334.3040  
Anthony.Gambino@TrinityCRE.com

**Scott Mersinger**  
Senior Advisor  
239.334.3040  
Scott.Mersinger@TrinityCRE.com


# FORMER SUSIE E. TOLEBERT SCHOOL

## 1925 W 15TH ST, JACKSONVILLE, FL 32209



### 2026 DEMOGRAPHICS

1925 W 15TH ST

	1 MILE	3 MILE	5 MILE
 AVERAGE H.H INCOME	\$44,630	\$60,350	\$76,144
 POPULATION	15,415	92,720	179,848
 EMPLOYMENT DENSITY	3,168	80,632	133,969

### PROPERTY FEATURES

<b>PRICE</b>	Call for Details
<b>AVAILABLE</b>	Acreage: 11.99 Acres
<b>ZONING</b>	PBF
<b>LOCATION</b>	Located on W 15th Street in Jacksonville, this property offers convenient access to I-95 and a central location within an established residential area, providing strong connectivity to Downtown Jacksonville, nearby neighborhoods, and key transportation corridors.



TrinityCRE.com  
 12574 Flagler Center Blvd • Jacksonville, FL 32258  
 © 2026 Trinity Commercial Group  
 This information is considered accurate, but not guaranteed.

