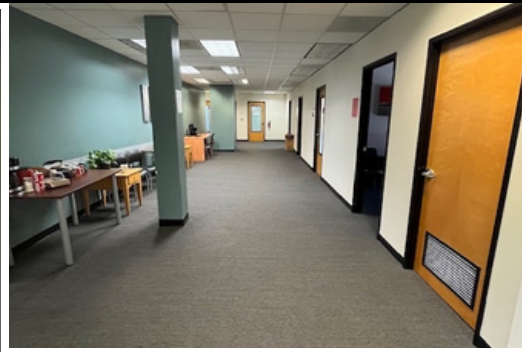


AVAILABLE NOW!

**DOWNTOWN OREGON CITY
900 MAIN ST, SUITE 200**




OFFICE SPACE FOR LEASE 6,634 SQFT | AVAILABLE NOW!




FEATURES

- 12 PRIVATE OFFICES
- LARGE OPEN WORK AREA
- 2 CONFERENCE ROOMS
- RECEPTION
- CUSTOMER PARKING SPOTS
- EMPLOYEE PARKING SPOTS
- 2 PRIVATE RESTROOM
- KITCHEN

CONTACT JEFF EDMONDSON

 503-780-3030

 jeff@247prop.com

 www.247prop.com