



For Lease: Warehouse Space

660 Lakeville Street, Suite G, Petaluma, CA

- Automotive/Fitness Permitted
- 14' Ceiling in Warehouse
- Private Bathroom
- Two Roll-Up Doors

Offering Summary

Total Available sq. ft.:	2,328 +/- sf
Initial Base Rent:	\$1.20 psf
Lease Type:	NNN
Lease Term:	3 - 5 Years
Available:	4/1/26

Contact:

Mark Cooper
 (415) 608-1036
mark@hlcre.com
 Lic# 01814831

Bob Knez
 (415) 446-4220
bob@hlcre.com
 Lic#: 00640535

HL Commercial Real Estate
www.hlcre.com



For Lease: Warehouse Space

660 Lakeville Street, Suite G, Petaluma, CA 94954

Building/Space Description:

Approximately 2,328 SF of versatile warehouse/creative space with 14-foot ceiling height and two grade-level roll-up doors providing convenient access for loading and adaptable uses. The flexible footprint and high ceilings make this suite ideal for a variety of concepts, including fitness or health facilities, studios for art, dance or martial arts, creative workspaces or artisan shops, retail, catering services, printing and publishing, and research and development—among others. Dual roll-up doors enhance functionality for businesses needing easy drive-in access, and the open layout allows users to customize the environment to their specific operational needs.

Location Description:

Situated at 660 Lakeville St in Petaluma, this well-located commercial property enjoys excellent connectivity and exposure. The site is positioned just off U.S. Highway 101, providing easy access to the broader Sonoma County region and convenient commuting to Santa Rosa, Rohnert Park, and Marin County. The surrounding area supports a mix of industrial, service, and creative businesses, with nearby options for dining, retail services, and amenities that complement commercial activity. Petaluma's vibrant downtown and historic core—with shops, restaurants, and cultural destinations—are a short drive away, enhancing the appeal for employees and customers alike. The location also benefits from strong walkability and proximity to regional transit options.

Space Information/Features:

Total Available Square Feet:	2,328+/- sq. ft. (Landlord is source, agent has not verified sq. footage)
Divisible/Can Add:	No
Ceiling Clear Height:	14 Ft. +/-
Parking Spaces:	2 reserved parking spaces
Number of Roll-up Doors:	2
Power:	3 Phase, 100 amp

Building Information/Features:

Total Building Square Feet:	12,835 +/- sq. ft.
Year Constructed:	1979 +/-
Zoning/Permitted Uses:	T5/CPSP (Owner will not accept woodworking uses)
Fire Sprinklers:	No
Heating & Air Conditioning:	Office area only
Flood Zone Designation:	Zone X (500-year)

An area inundated by 500-year flooding; an area inundated by 100-year flooding with average depths of less than 1 foot or with drainage area less than 1 square mile; or an area protected by levees from 100-year flooding.

Lease Information:

Lease Term:	1 - 3 Years
Initial Base Rent:	\$1.20/psf (\$2793/mo)
Base Rent Increases:	3% per annum
Lease Type:	NNN
Tenant Direct Expenses:	PG&E, garbage, interior maintenance. Plus: \$0.32 psf (\$744.96/mo.) for water & common area Property taxes and insurance, adjusts annually based on previous years actual costs.

For Lease: Warehouse Space

660 Lakeville Street, Suite G, Petaluma, CA 94954



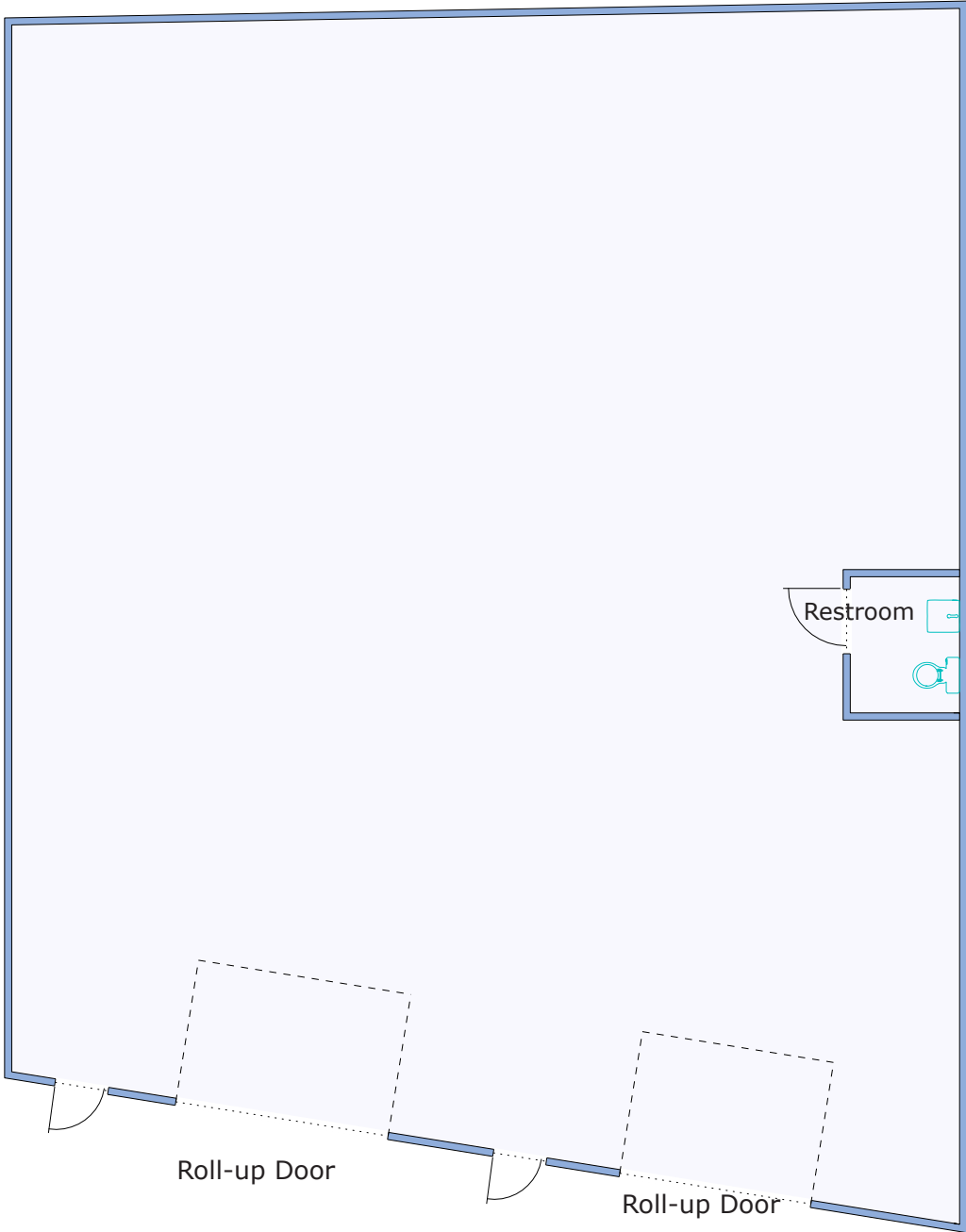
[Click here to View in Google Maps](#)



No warranty or representation, express or implied, is made as to the accuracy of the information contained herein, and same is submitted subject to errors, omissions, change of price, rental or other conditions, withdrawal without notice, and to any special listing conditions imposed by our principals. The prospective purchaser/lessee should independently verify all information.

For Lease: Warehouse Space

660 Lakeville Street, Suite G, Petaluma, CA 94954



For Lease: Warehouse Space

660 Lakeville Street, Suite G, Petaluma, CA 94954



No warranty or representation, express or implied, is made as to the accuracy of the information contained herein, and same is submitted subject to errors, omissions, change of price, rental or other conditions, withdrawal without notice, and to any special listing conditions imposed by our principals. The prospective purchaser/lessee should independently verify all information.

Our Company



HL Commercial Real Estate (HLCRE) was founded in 1980 and is a full-service commercial brokerage and property management firm based in San Rafael, California. For more than four decades, HLCRE has been a trusted advisor to investors, business owners, and property developers throughout Marin County and the greater Bay Area. The firm's expertise spans office, retail, industrial, multifamily, mixed-use, and land transactions, representing clients in sales, leasing, and investment acquisitions.



With more than \$3.8 billion in completed transactions, HLCRE combines deep local knowledge with a sophisticated understanding of regional and statewide markets. The team's approach is built on integrity, insight, and long-term relationships—ensuring every client receives thoughtful advice and diligent execution.

- Sales
- Leases
- Seller/Landlord Representation
- Buyer/Tenant Representation
- Property Management
- Tax Deferred Exchanges

For clients seeking experience, professionalism, and a personalized approach to commercial real estate, HL Commercial Real Estate offers a proven record of performance and partnership. For a free evaluation or service description, please contact us.

Higher Level Commercial Real Estate

70 Mitchell Blvd., Ste. 202
San Rafael, CA 94903
www.hlcre.com



Mark Cooper
(415) 608-1036
mark@hlcre.com
Lic#: 01814831



Bob Knez
(415) 446-4220
bob@hlcre.com
Lic#: 00640535