

OAKLAND AVE OFFICE

2909 East Oakland Avenue
Johnson City, TN 37601

Location

Near the intersection of Bristol Hwy on E Oakland Ave

Available for Lease

Suite 103: 2,035 SF office
\$13/SF/year NNN

Highlights

Reception with 2 sliding-glass windows & waiting area
1 private office & 1 semi-private office that can be shared
Large break room with kitchen
2 restrooms
On-site parking
One mile from I-26, exit 20
Minutes from retail districts on N Roan St and Bristol Hwy

Traffic Counts

E Oakland Ave: 11,172 (2025)

Demographics

(2025 Est.)	3 mile	5 mile	10 mile
Population	35,304	79,304	172,182
Median HH Income	\$66,914	\$59,751	\$63,597
Median Age	43.1	38.1	41.9

Contact

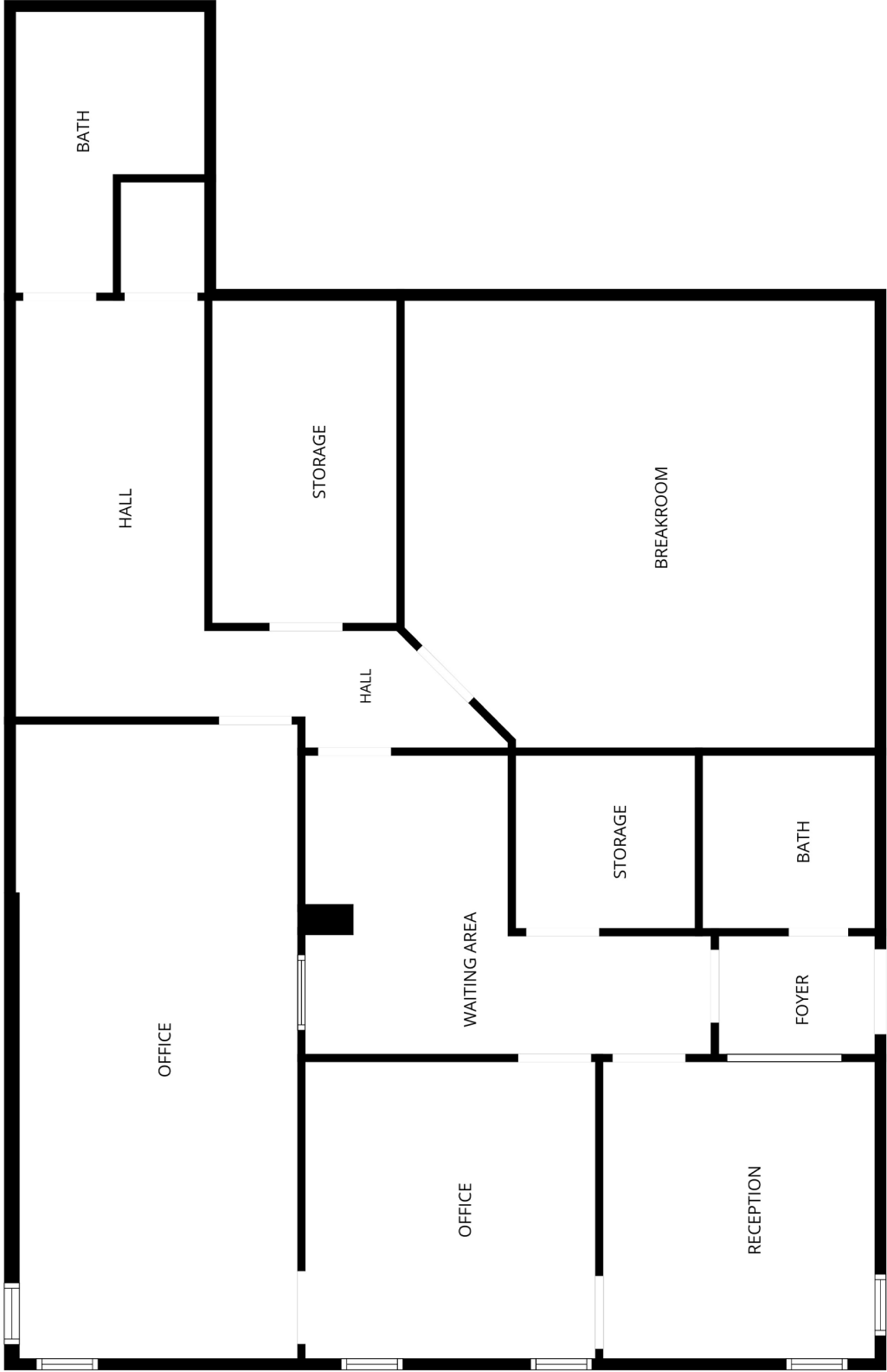
Shannon K. Castillo

Broker

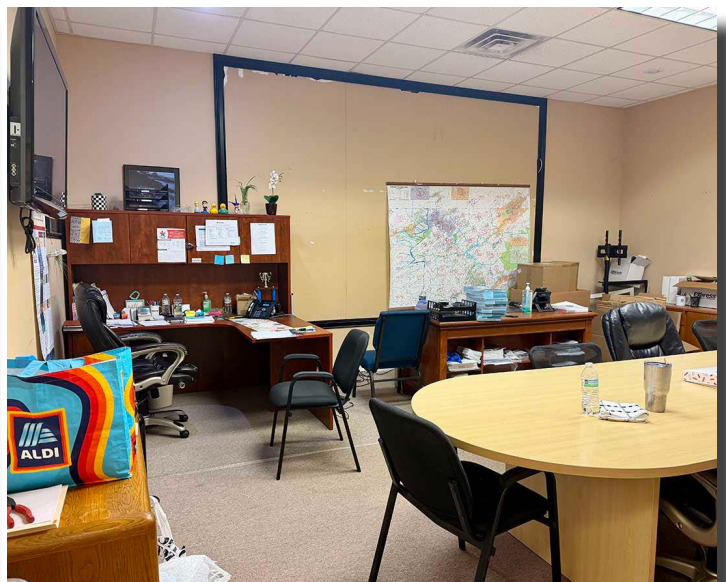
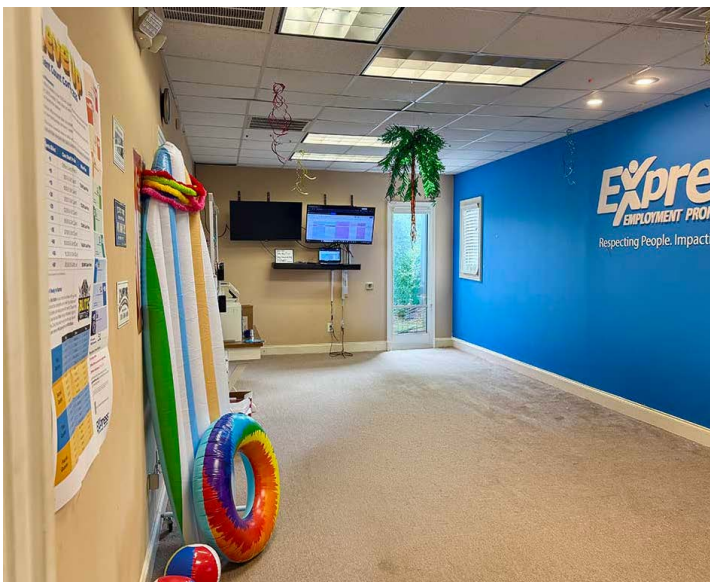
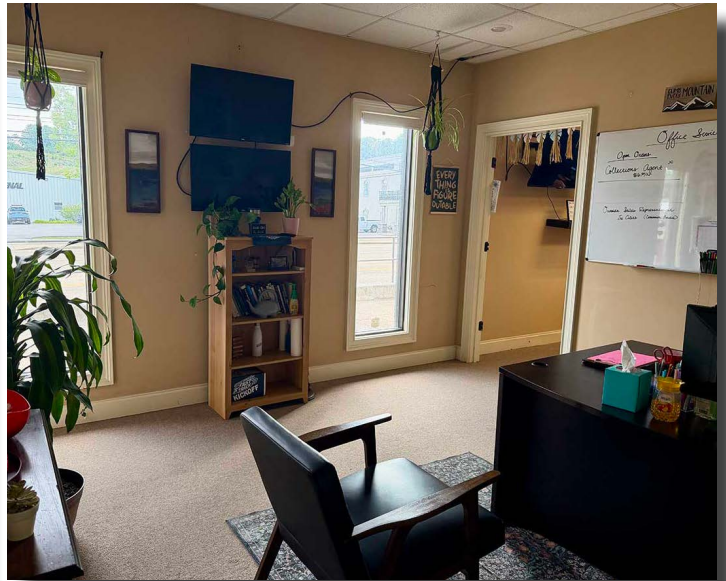
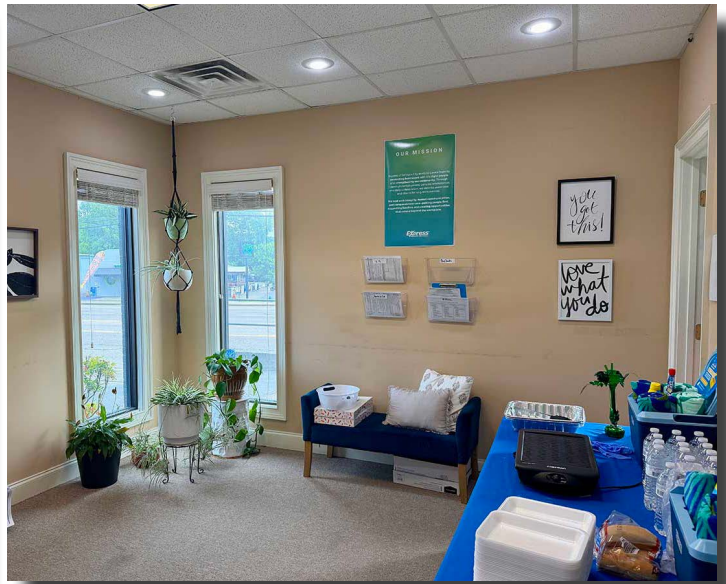
shannon@mitchcox.com

📞 423-282-6582 | 📠 423-282-5903
www.mitchcox.com





*Not an architectural floor plan. For marketing purposes only.



MITCH COX
REALTOR, INC.

2304 Silverdale Drive, Suite 200, Johnson City, TN 37601
423-282-6582 (o) 423-282-5903 (f) www.mitchcox.com