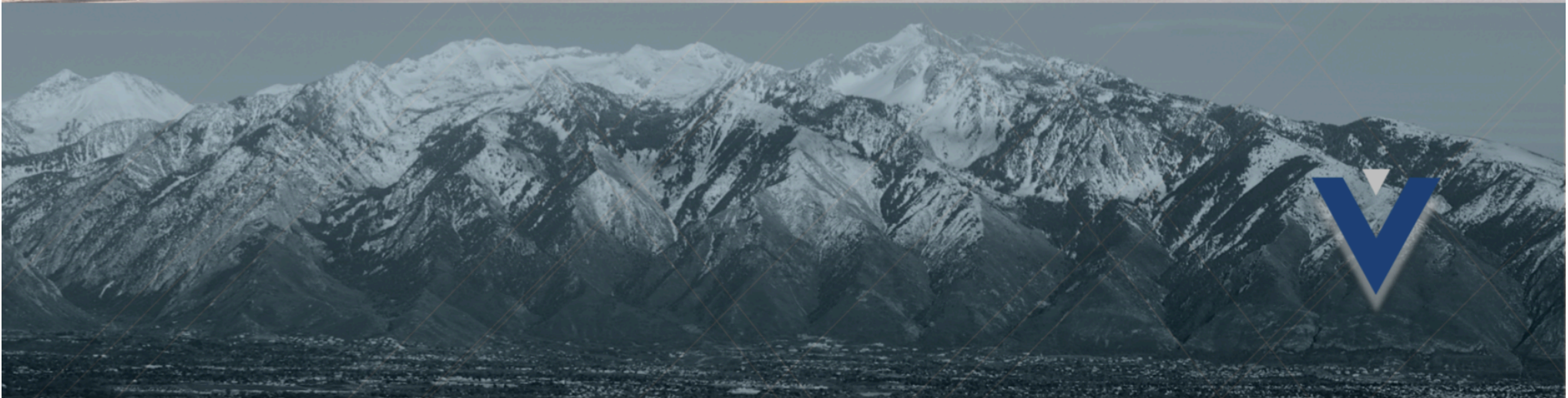


THRIVE
DEVELOPMENT

HIGHLANDS HEALTH CENTER

5481 WEST 7800 SOUTH WEST JORDAN, UT

CONSTRUCTION COMPLETED READY FOR OCCUPANCY



PHOTOS

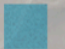
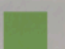

THRIVE

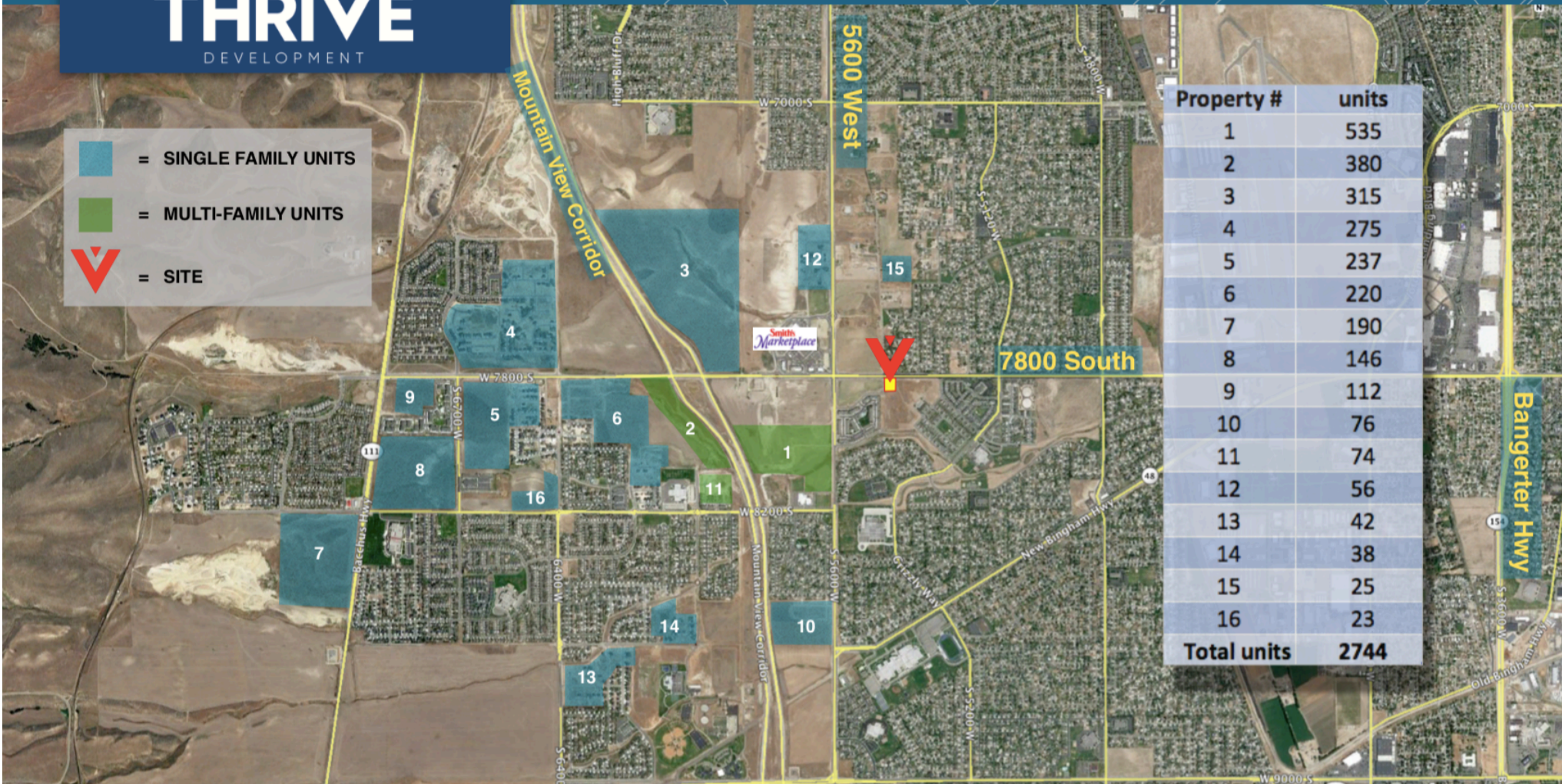
DEVELOPMENT



THRIVE

DEVELOPMENT

 = SINGLE FAMILY UNITS
 = MULTI-FAMILY UNITS
 = SITE



Property #	units
1	535
2	380
3	315
4	275
5	237
6	220
7	190
8	146
9	112
10	76
11	74
12	56
13	42
14	38
15	25
16	23
Total units	2744

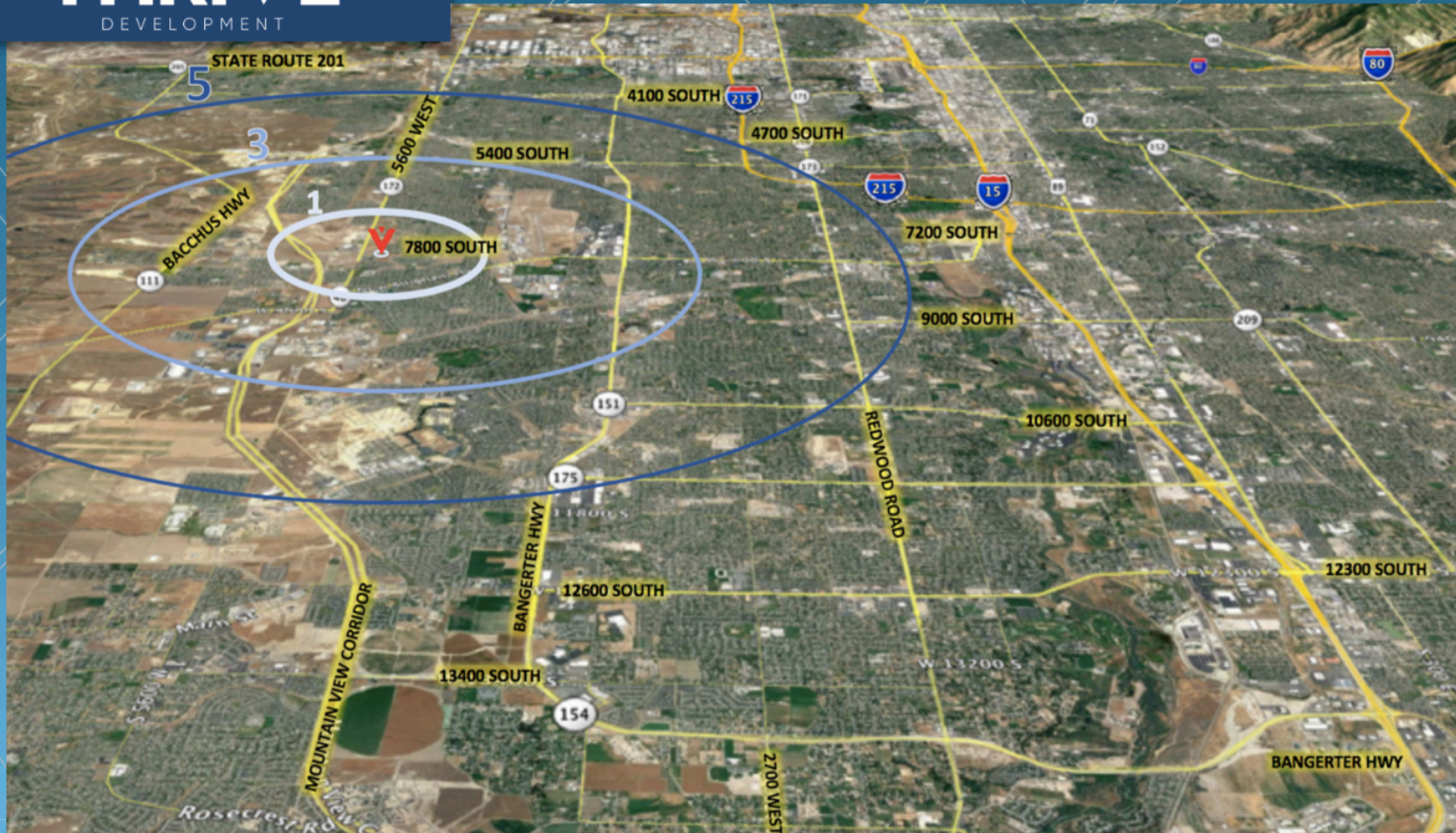
The information was gathered from conversations and an email from Larry Gardner, The West Jordan Senior Plan. The average population per household in this area is 3.7. The anticipated population growth from these subdivisions is 10,153.



DEMOGRAPHICS

THRIVE

DEVELOPMENT



Radius	2015 Population	2017 Estimated Population	2019 Projected Population	Average Household Income	% of Population 19 and under
1 Mile	10,938	12,688	19,413	\$ 84,145.00	42.68%
3 Mile	98,372	118,176	150,941	\$ 78,361.00	38.93%
5 Mile	257,300	308,760	370,512	\$ 80,911.00	36.62%

