

Industrial in TS24

Oakesway, Hartlepool
Durham, TS24 0RE

£27,600

COMMERCIAL



Summary

- Property Type: Industrial - Parking: Allocated
- Price: £27,600

Description

A uniquely robust industrial commercial rental property found in the thriving town of Hartlepool. This extensive facility boasts a substantial floor space lending itself perfectly for a variety of businesses and industries.

Situated ideally within the heart of Hartlepool, the location promises optimal convenience and accessibility. The building is only moments from the town centre, surrounded by multiple key transport links, including main roads and public transport amenities.

The spacious site extends an impressive width and depth, allowing for versatile functions suited to manufacturing, assembly, warehousing, and distribution purposes. It presents multiple access points with ample room for large vehicle operation and loading zones, ensuring smooth and efficient business operations.

Internally, the property is well-lit and ventilated, thus providing a suitable and comfortable working environment. The area is mostly open-plan, encouraging workflow efficiency and flexible organization.

In addition to its practical features, the property affords a secure perimeter with interim arrangements for on-site parking and an office block. The premises are maintained to a high standard, ensuring a durable base for your business needs.

This robust industrial site in Hartlepool is a fantastic opportunity to establish or expand commercial endeavours within a thriving business community. Secure this property today and anchor your business's successful future.

Location

The unit is located on Oakesway, a mainly industrial area in Hartlepool, Durham. Oakesway easily accessible by car and is less than a couple of miles north of Hartlepool town centre, with bus links into town a short walk away. Hartlepool is a coastal town about ten miles north of Middlesbrough and eighteen miles east of Durham city centre.

Accommodation

Space provides sq metres/ sq ft (approx) .

Lease terms

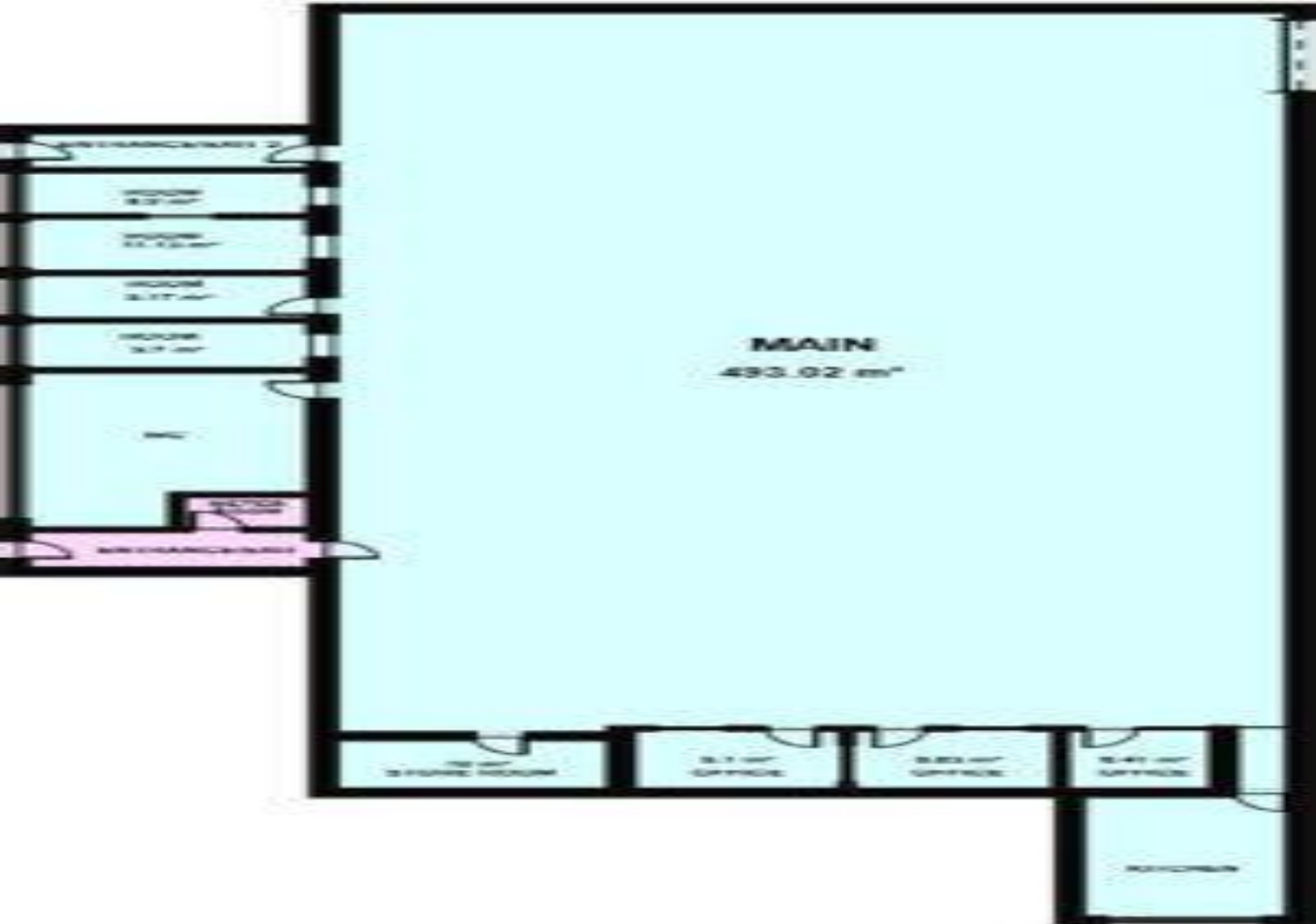
Available by way of new lease terms.

EPC

We currently await a copy of the EPC.

Additional Information

For further information please contact our office direct on 0191 737 1154, or alternatively via e-mail on commercial@pattinson.co.uk. With regards to viewing the subject property, this is to be done strictly by appointment through Keith Pattinson Commercial department. Please contact us to arrange an internal inspection, or to register your interest.



Oakesway, Hartlepool, Durham, TS24 0RE

Contact your local branch today for more information on this property:

Mercantile House Kingfisher Way, Silverlink Business Park, Wallsend, Wallsend, NE28 9NY, www.pattinson.co.uk

These particulars, whilst believed to be accurate are set out as a general outline only for guidance and do not constitute any part of an offer or contract. Intending purchasers should not rely on them as statements of representation of fact, but must satisfy themselves by inspection or otherwise as to their accuracy. No person in this firm's employment has the authority to make or give any representation or warranty in respect of the property.

