



# 125 WATSON ST

## Summary

**Parcel ID:** 21454  
**Address:** 125 WATSON ST

**Owner Information**

**Owner Name:** DIM PARTNERS LLC  
**Owner Address:** 125 WATSON ST  
**Mail-To:** DIM PARTNERS LLC  
**Mailing Address:** 125 WATSON ST, DANVILLE, VA 24541

**Land Information**

**Flood Zones:** N/A  
**Enterprise Zones:** N/A  
**Historic Districts:** N/A  
**Elementary School District:** Forest Hills  
**Middle School District:** O.T. Bonner

**Value Information**

**Land Value:** \$19,500  
**Land Use Value:** N/A  
**Improvement:** \$288,400  
**Total:** \$307,900

**Additional Information**

**State Code:** 4661 Dr Office & Med Services  
**Land Use:** Commercial  
**Tax Map:** 1607025000006000  
**Approx. Acres:** 0.2234  
**Legal Description:** 65 FT & ALLEY RTS WATSON ST  
**Zone:** NC Neighborhood Retail Commercial  
**Notes:** DB 01-429 3 List Incl Acct# 21104, 21454 & 21455. - DANVILLE INTERNAL MEDICINE



## Buildings

### **Building 1 - Section 1**

**Property Class:** Commercial

**Style:** N/A

**Year Built:** N/A

**Condition:** N/A

**Story Height:** N/A

**Finished Square Feet:** 3622

**Basement Square Feet:** N/A

**Finished Basement Sq. Ft.:** N/A

**Bedrooms:** N/A

**Dining Rooms:** N/A

**Family Rooms:** N/A

**Living Rooms:** N/A

**Full Bath:** N/A

**Half Bath:** N/A

**Total Rooms:** N/A

*\*Bathrooms are not included in total room count.*

#### **Features:**

Brick with Block Back-up

N/A

Concrete Block

Passenger #

Warmed and Cooled Air

#### **Size:**

20 %

2785 Unit

80 %

1 Unit

100 %



## Improvements

<b>Building #</b>	<b>Improvements</b>	<b>Size</b>
1	Asphalt Paving	5055 Units
1	Patio (Brick or Stone)	116 Units
1	Concrete Paving	1080 Units



## Land

*\*Land area is based on information available, therefore acreage and/or square footage may be approximated.*

---

<b>Land Code:</b> Com Per Sq Ft	<b>Rate:</b> \$2
<b>Acres/Units:</b> 0.22	<b>Adj. Rate:</b> \$2
<b>Sq. Ft.:</b> 9583.2	<b>Base Value:</b> \$19,510
<b>Front:</b> N/A	<b>Adj. Amount:</b> \$-10
<b>Effective Front:</b> N/A	<b>Value:</b> \$19,500
<b>Depth:</b> N/A	

---



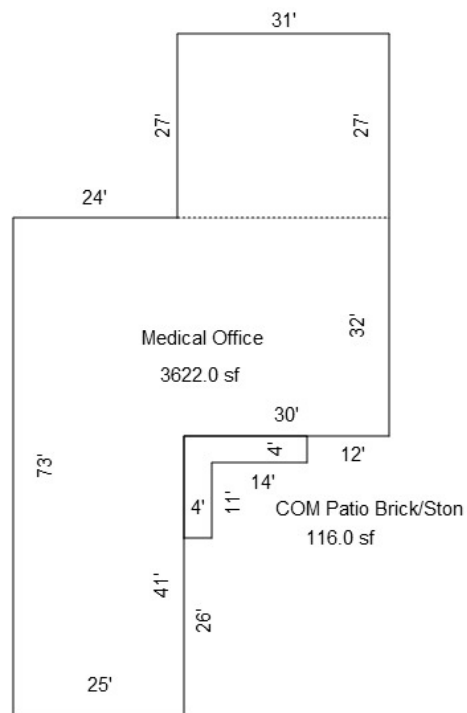
### Transfers

<b>Deed:</b>	<b>Page:</b>	<b>Sale Date:</b>	<b>Sale Price:</b>	<b>Previous Owner:</b>	<b>Owner:</b>
D 01	429	01/31/2001	\$285,000	ODOM TERRY D	DIM PARTNERS LLC
D 692	424	07/06/1984	N/A	N/A	N/A



## Assessments

<b>Year:</b>	<b>Land:</b>	<b>Use:</b>	<b>Improvements:</b>	<b>Total:</b>
2023	\$19,500	N/A	\$288,400	\$307,900
2022	\$19,500	N/A	\$288,400	\$307,900
2021	\$19,500	N/A	\$291,300	\$310,800
2020	\$19,500	N/A	\$291,300	\$310,800
2019	\$19,500	N/A	\$281,500	\$301,000
2018	\$19,500	N/A	\$281,500	\$301,000
2017	\$19,500	N/A	\$281,500	\$301,000
2016	\$19,500	N/A	\$281,500	\$301,000
2015	\$19,500	N/A	\$286,800	\$306,300
2014	\$19,500	N/A	\$286,800	\$306,300
2013	\$19,500	N/A	\$289,200	\$308,700
2012	\$19,500	N/A	\$289,200	\$308,700
2011	\$19,500	N/A	\$294,100	\$313,600
2010	\$19,500	N/A	\$294,100	\$313,600
2009	\$19,500	N/A	\$316,400	\$335,900
2008	\$19,500	N/A	\$316,400	\$335,900
2007	\$19,500	N/A	\$311,200	\$330,700
2006	\$19,500	N/A	\$311,200	\$330,700
2005	\$19,500	N/A	\$277,100	\$296,600
2004	\$19,500	N/A	\$277,100	\$296,600
2003	\$13,000	N/A	\$248,900	\$261,900
2002	\$13,000	N/A	\$248,900	\$261,900
2001	\$13,000	N/A	\$235,300	\$248,300
2000	\$13,000	N/A	\$235,300	\$248,300



Sketch by Apex Medina™

