

FOR LEASE | Fully Built, Fully Ready: 3,200—4,700 SF of Opportunity

MOVE-IN READY OFFICE SPACE FOR LEASE

335 Broad Street, 2nd Floor

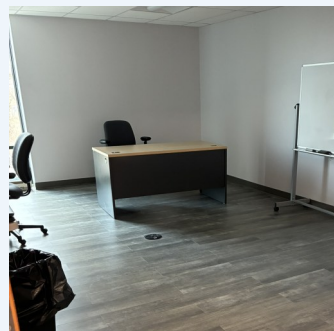
Manchester, CT 06040

\$14/RSF Plus Utilities

Modern. Clean. Convenient. Discover a professional, fully built-out office environment at 335 Broad Street. Perfectly suited for a growing business or a professional practice, this suite offers a seamless transition with zero downtime.



OVERVIEW



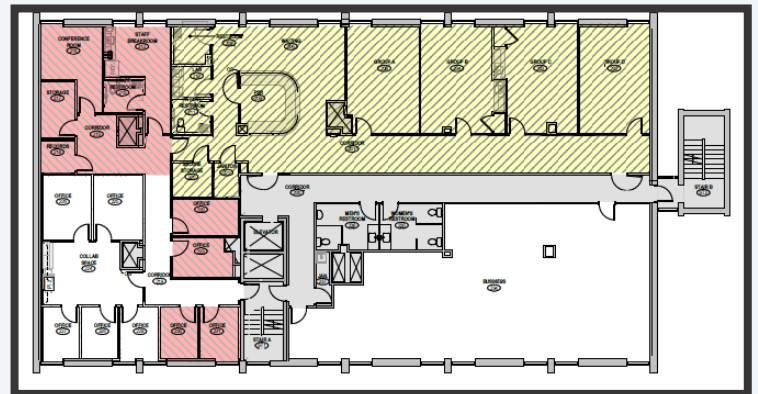
PROPERTY HIGHLIGHTS

Size: 3,200—4,700 SF (2nd Floor)

Condition: Clean, vacant, and fully built-out for immediate occupancy.

Amenities: In-suite **kitchen** and **private restrooms** for exclusive use.

Layout: Efficient floor plan designed for modern workflows.



LOCATION & ACCESSIBILITY

Experience the convenience of a Manchester address with rapid access to the entire Greater Hartford region.

Prime Transit: Seconds away from **Middle Turnpike W** and **Route 6**.

Commuter Friendly: Located just minutes from **Downtown Hartford**.

Walkable Perks: Surrounded by essential amenities including **retail shopping**, **grocery stores**, and **business services**.

CONTACT DETAILS

PHOEBE KY | 860-313-5400 X 145 | PHOEBE@F8PROPERTIES.COM | WWW.F8PROPERTIES.COM



FIGURE EIGHT
PROPERTIES