

FOR LEASE

**OFFICE /
WAREHOUSE**

**2310 N Kerby
Portland, OR 97227**

- Fully renovated in 2021
- 2 private offices w/open workspace
- Reception desk + break room w/kitchenette
- 2 restrooms, incl shower
- 16' warehouse ceilings
- 12' grade-level overhead door

Large, paved fenced yard w/onsite parking, downtown views, close to freeways, max yellow line, close to restaurants and coffee shops



Eli Haworth-Kaufka
Principal Broker
503-502-9403
eli@cloudcityrealty.com



PORTLAND, OR

CLOUD CITY REALTY

2,588 sf

**CLOSE-IN ELIOT
NEIGHBORHOOD**



Warehouse

Warehouse ~1,625 SF

- 16' ceilings
- 12' grade-level overhead door
- Insulated walls and ceiling
- High efficiency LED lighting

\$16/sf + low NNN



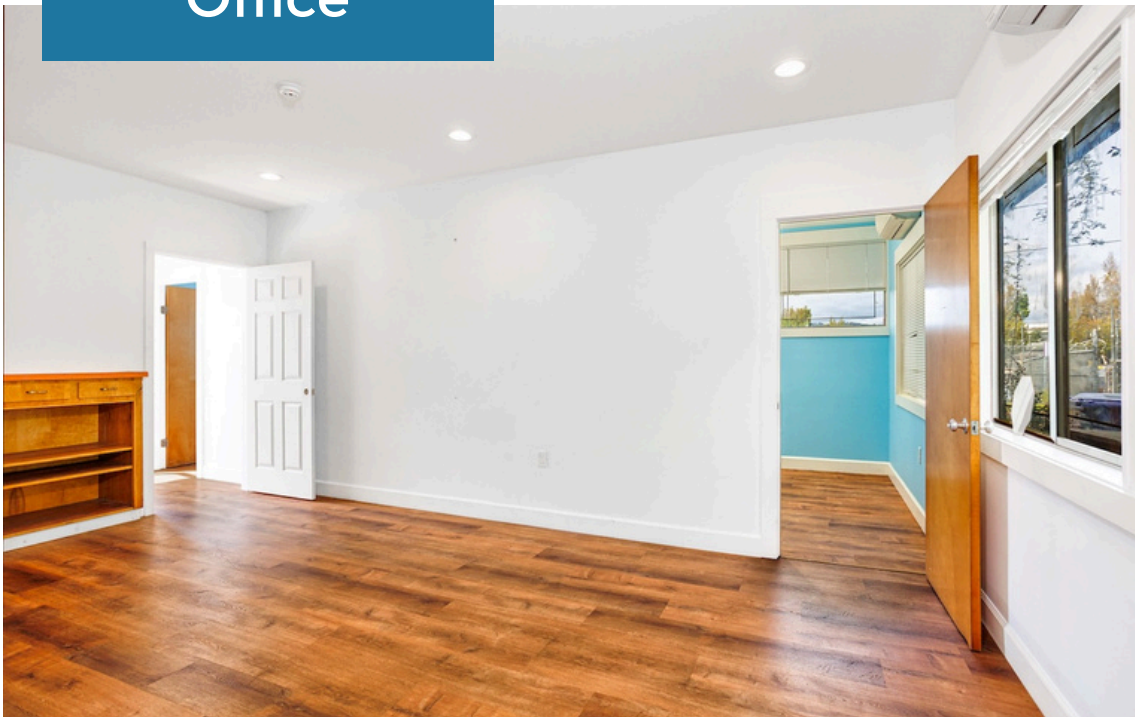


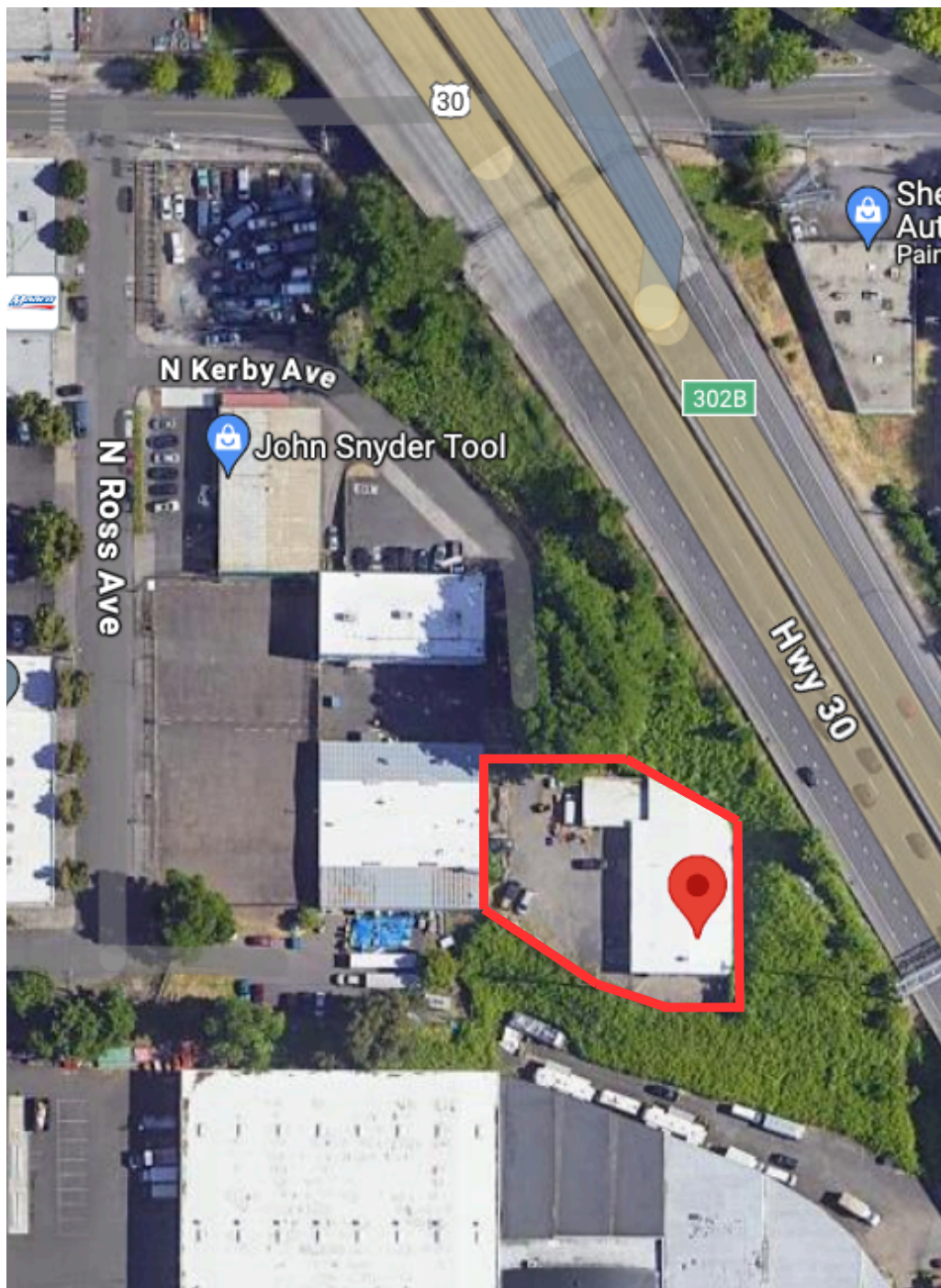
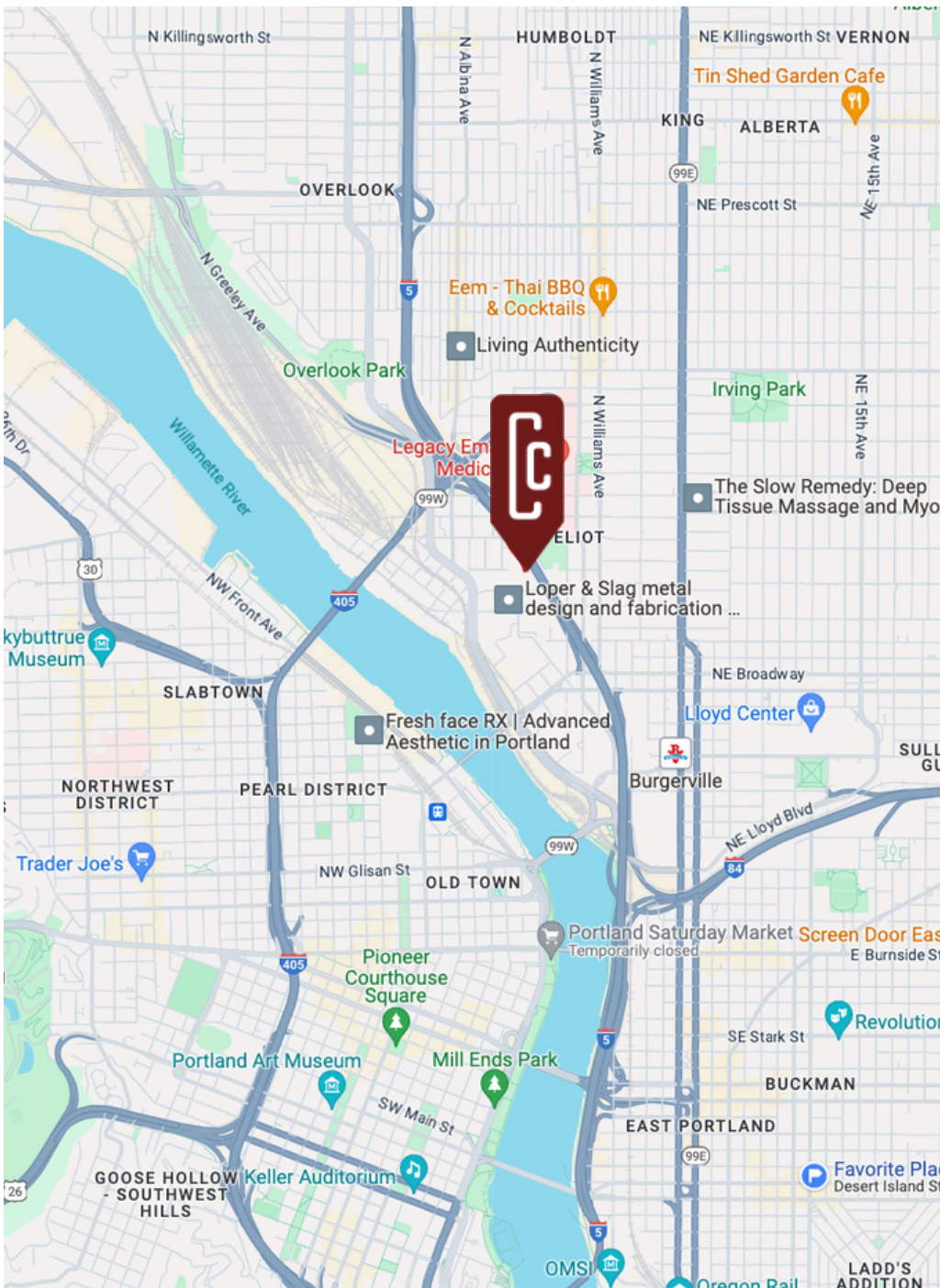
Office



Office
~963 SF

- Fully renovated in 2021
- 2 private offices
- 1 larger open work space with reception desk
- 1 large break room with kitchenette
- 2 bathrooms, incl 1 shower






 Cloud City Realty
 5901 NE Shaver St
 Portland, OR 97213
www.cloudcityrealty.com
 503-339-1456

Eli Haworth-Kaufka
 Principal Broker
 503-502-9403
eli@cloudcityrealty.com