

# 521 Fifth

ENTIRE FLOORS AVAILABLE

# RENOVATED BUILDING LOBBY



# AVAILABILITIES

## E29 | 6,046 RSF

- New prebuilt with delivery Summer 2023

## E20 | 12,265 RSF

- New prebuilt with delivery Summer 2023

## E10 | 21,185 RSF

- New prebuilt available immediately
- Fully furnished

## E9 | 21,185 RSF

- Available immediately
- Space to be delivered raw or Landlord willing to turnkey

## E4 | 22,126 RSF

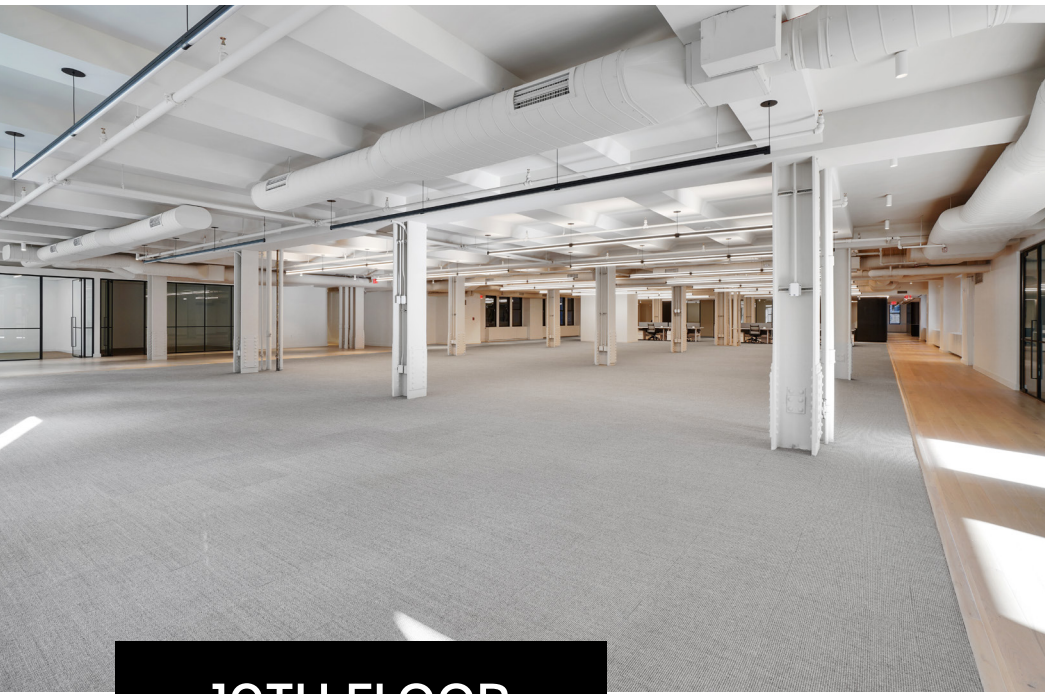
- Available immediately
- Space to be delivered raw or Landlord willing to turnkey

## E3 | 22,818 RSF

- Available immediately
- Space to be delivered raw or Landlord willing to turnkey
- Extra ceiling height







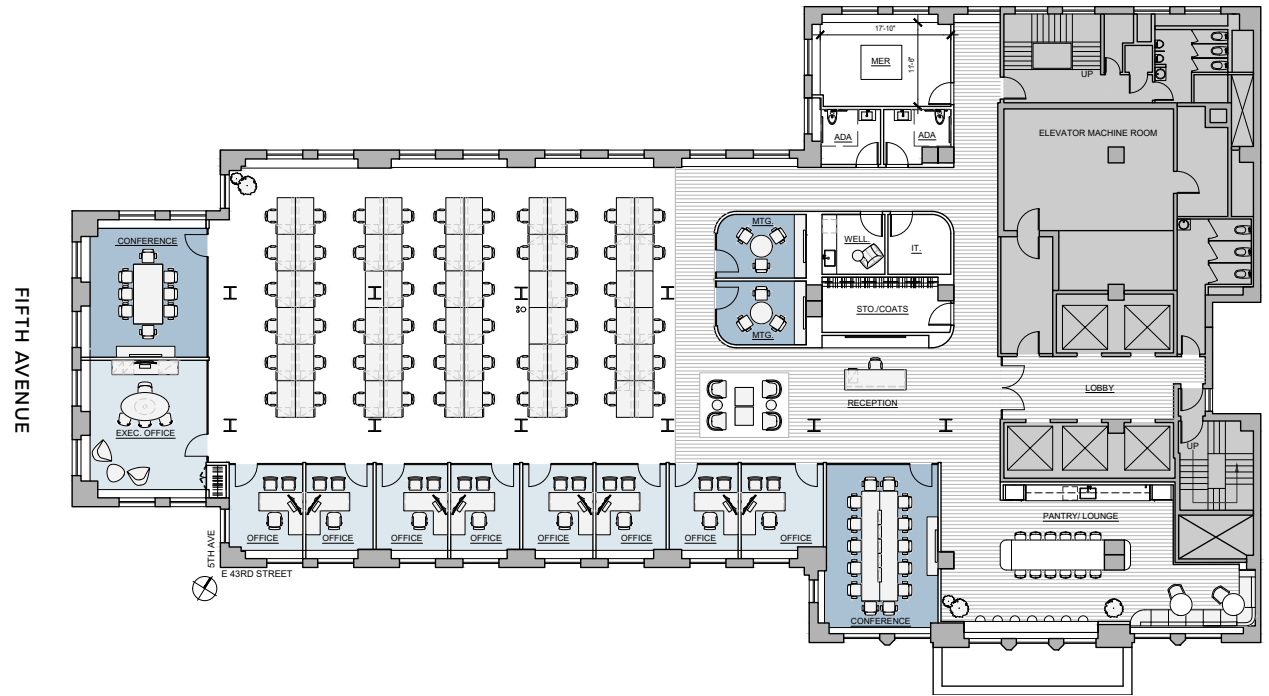
**10TH FLOOR**



# E20 | 12,265 RSF

## DOWNLOAD PLAN

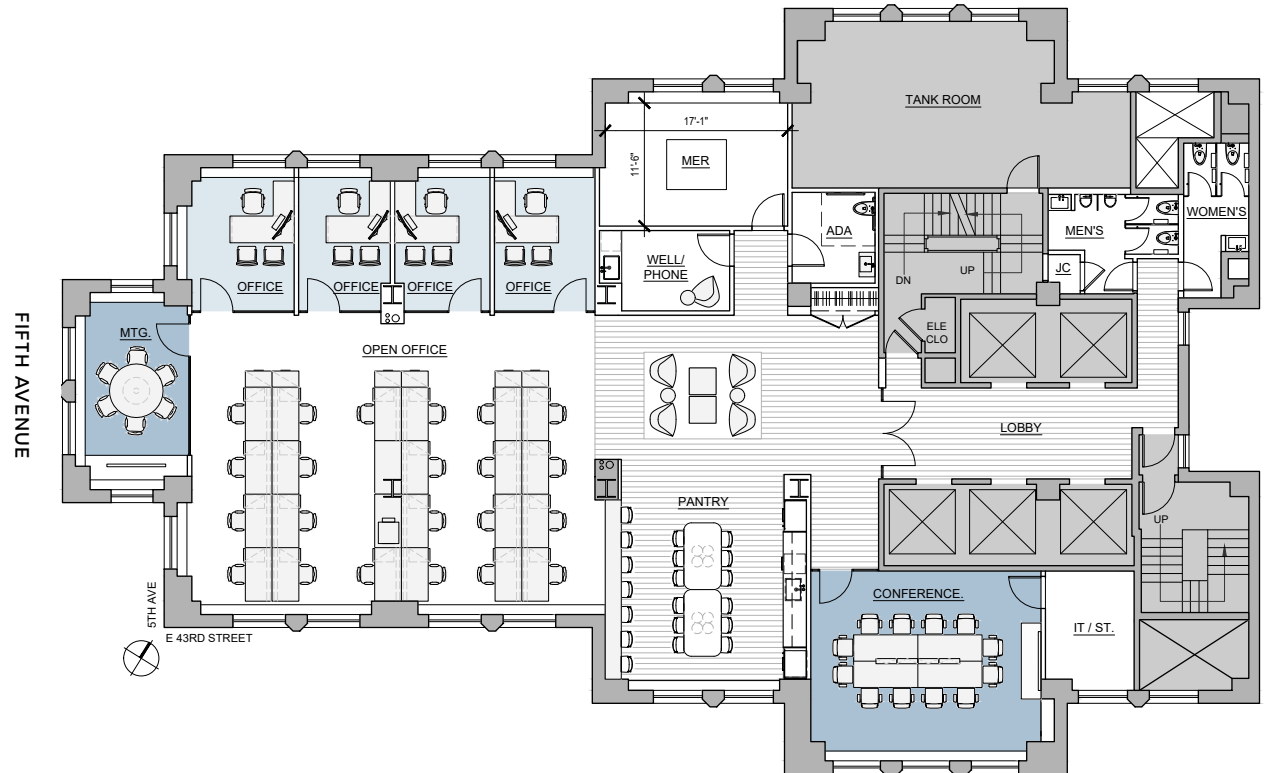
Office	9
Work stations	56
Reception	1
Conference room	2
Meeting room	2
Pantry	1
Wellness	1
IT	1
Coat closet	1
ADA WC	2
<b>Headcount</b>	<b>66</b>
<b>Total Occupancy</b>	<b>85</b>



# E29 | 6,046 RSF

## DOWNLOAD PLAN

Private office	4
Workstations	22
Conference room	1
Meeting room	1
Pantry	1
Wellness	1
IT	1
ADA WC	
<b>Headcount</b>	<b>26</b>
<b>Total Occupancy</b>	<b>85</b>



# BASE FLOOR TEST-FIT

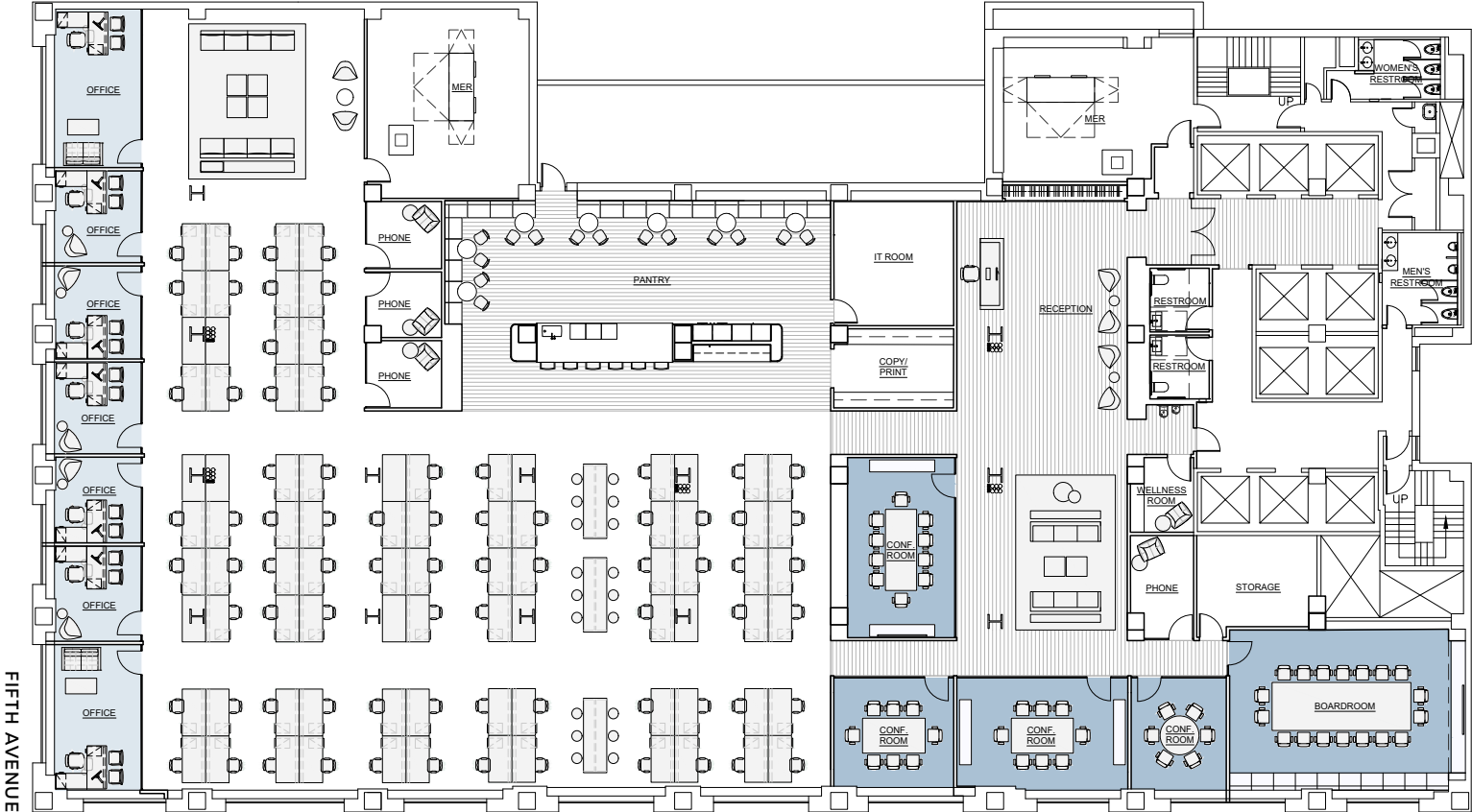
E9 | 21,185 RSF

E4 | 22,126 RSF

E3 | 22,818 RSF

**DOWNLOAD PLAN**

Private office	7
Workstations	77
Reception	1
Board room	1
Conference room	4
Phone room	4
Wellness room	1
Pantry	1
Copy & print	1
Coat closet	1
IT	3
<b>Headcount</b>	<b>85</b>





# 521 Fifth

**PETER TURCHIN**  
peter.turchin@cbre.com  
T 212 984 8364

**TIM FREYDBERG**  
tim.freydberg@cbre.com  
T 212 984 8136

**BENJAMIN JOSEPH**  
benjamin.joseph@cbre.com  
T 212 984 8206

© 2022 CBRE, Inc. All rights reserved. This information has been obtained from sources believed reliable, but has not been verified for accuracy or completeness. You should conduct a careful, independent investigation of the property and verify all information. Any reliance on this information is solely at your own risk. CBRE and the CBRE logo are service marks of CBRE, Inc. All other marks displayed on this document are the property of their respective owners, and the use of such logos does not imply any affiliation with or endorsement of CBRE.

**CBRE**