



FOR SALE · COMMERCIAL OFFICE CONDO

Eaton Square

400 Hobron Lane, Suite V2A · Honolulu, HI 96815

ASKING PRICE

\$340,000

PRICE / SF

\$306/SF

RENTABLE SF

1,111 SF

TYPE

Office Condo

PROPERTY OVERVIEW

Hawaii Commercial Real Estate is pleased to present the exclusive sale of Unit V2A at Eaton Square — approximately 1,111 rentable square feet of commercial office space in the heart of Waikiki.

The unit features an open floor plan with wood-look vinyl plank flooring, drop ceiling with fluorescent lighting, fire suppression sprinkler system, a private enclosed office, and a separate utility room. Ideal for owner-user occupancy or as an investment/lease-up opportunity. Eaton Square is a landmark mixed-use complex steps from the beach on Ala Moana Boulevard.

LOCATION

Waikiki · Ala Moana Blvd

OWNERSHIP

Fee Simple

TMK

(1) 2-6-13:14-479

Eaton Square · 400 Hobron Lane, Suite V2A · Honolulu, HI 96815

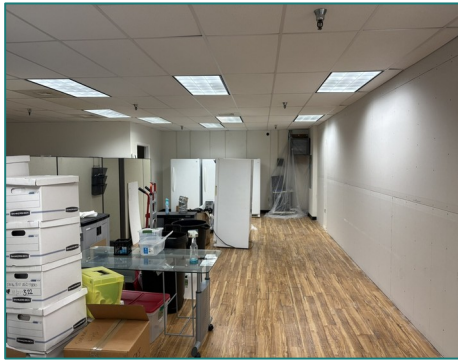
Property	Eaton Square, Unit V2A
Address	400 Hobron Lane, Apt V2A Honolulu, HI 96815
TMK	(1) 2-6-13:14-479
Rentable SF	Approximately 1,111 SF
Property Type	Commercial Office Condo
Ownership	Fee Simple
Asking Price	\$340,000
Price Per SF	~\$306/SF
Zoning	Waikiki Special District
Complex	Eaton Square Mixed-Use



INVESTMENT HIGHLIGHTS

- ▶ Rare Waikiki commercial condo — steps from the beach
- ▶ Open floor plan with private office & wood-look flooring
- ▶ Fire suppression, drop ceiling, fluorescent lighting
- ▶ Ideal owner-user or investment / lease-up opportunity
- ▶ Landmark Eaton Square complex on Ala Moana Boulevard

INTERIOR PHOTOS



LOCATION · WAIKIKI, HONOLULU

Superior Waikiki location steps from the beach at the corner of Hobron Lane and Ala Moana Boulevard — one of Honolulu's highest-demand commercial corridors.

- ▶ Waikiki Beach (0.2 mi)
- ▶ Hilton Hawaiian Village (0.3 mi)

- ▶ Ala Moana Center (0.8 mi)
- ▶ Convention Center (1.0 mi)



hawaiiCRE.com

EXCLUSIVE LISTING AGENT

Ryland Hart

Investment Property Sales · Hawaii Commercial Real Estate

RS #87807

(808) 499-4801 · ryland@hawaiiCRE.com