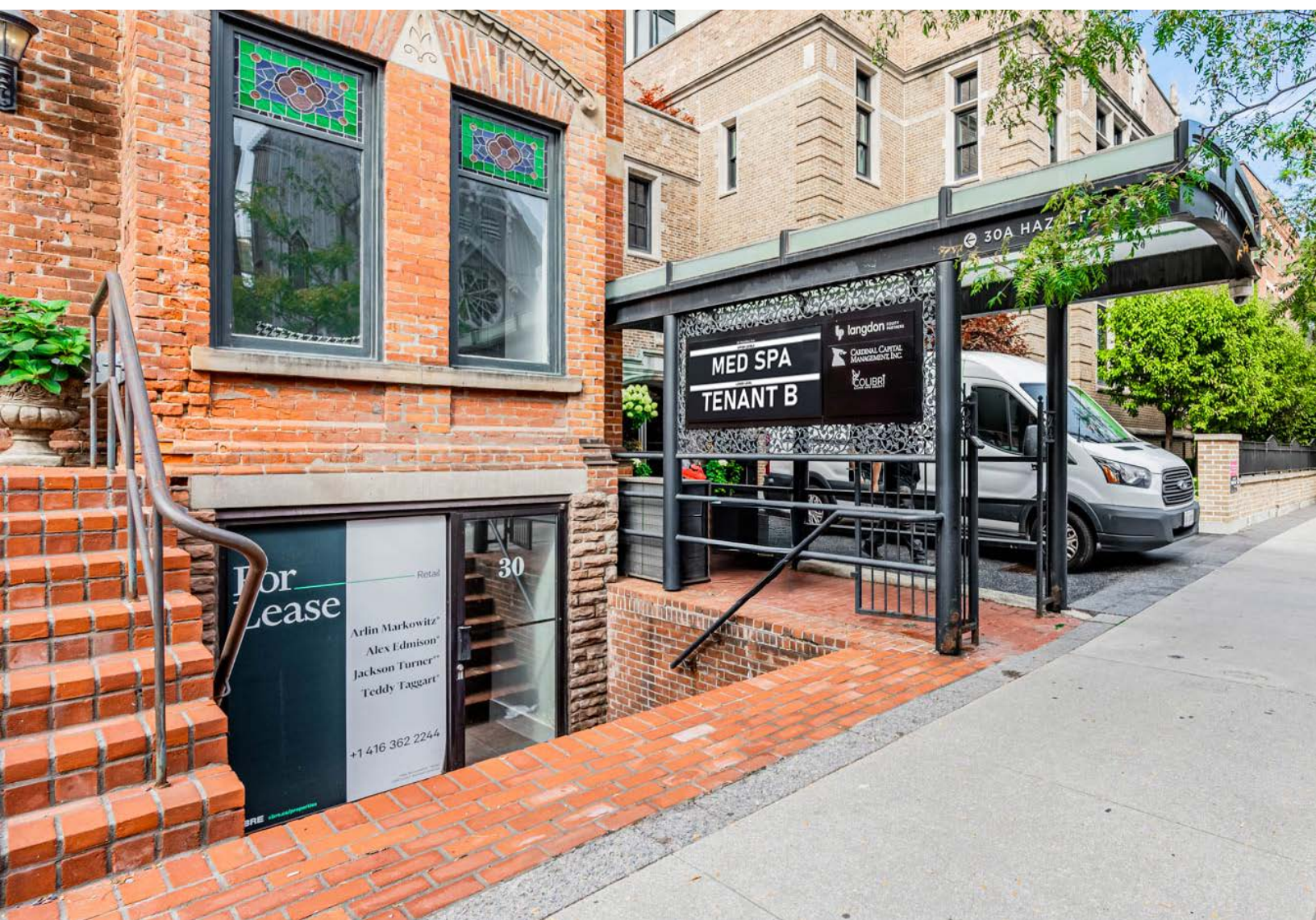


30 HAZELTON AVENUE

LOWER LEVEL RETAIL FOR LEASE IN THE HEART OF YORKVILLE

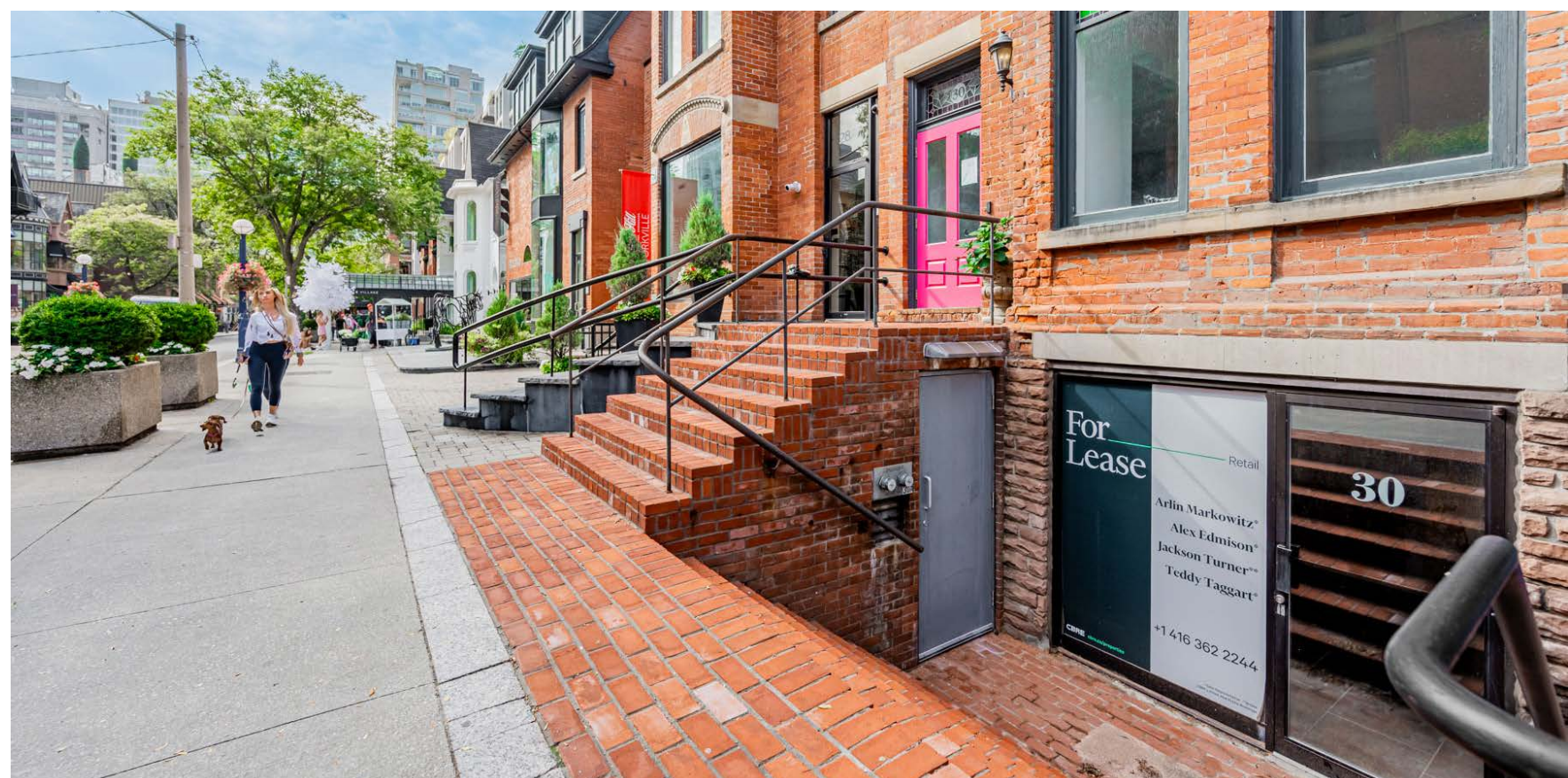
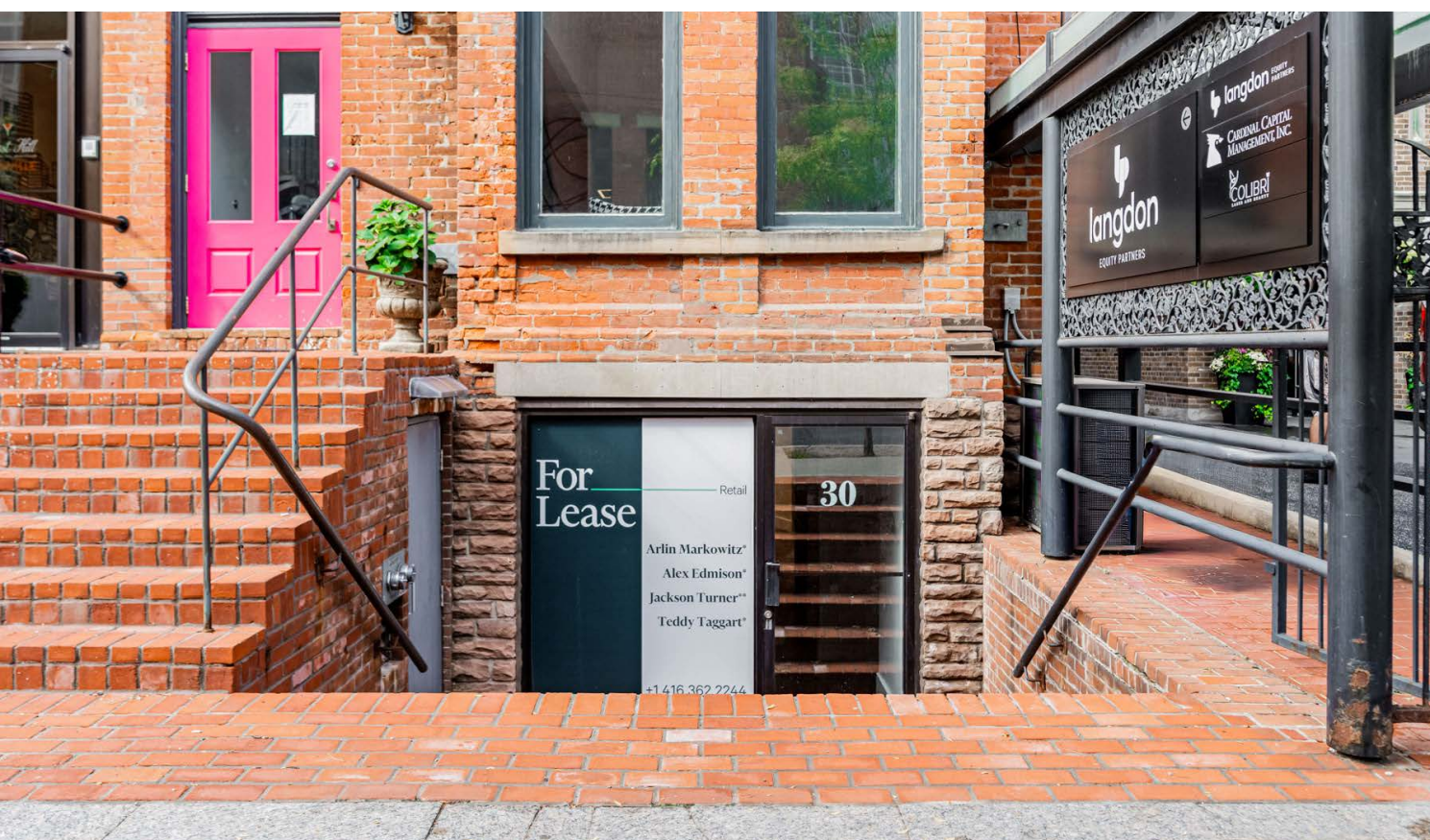


CBRE urban retail team

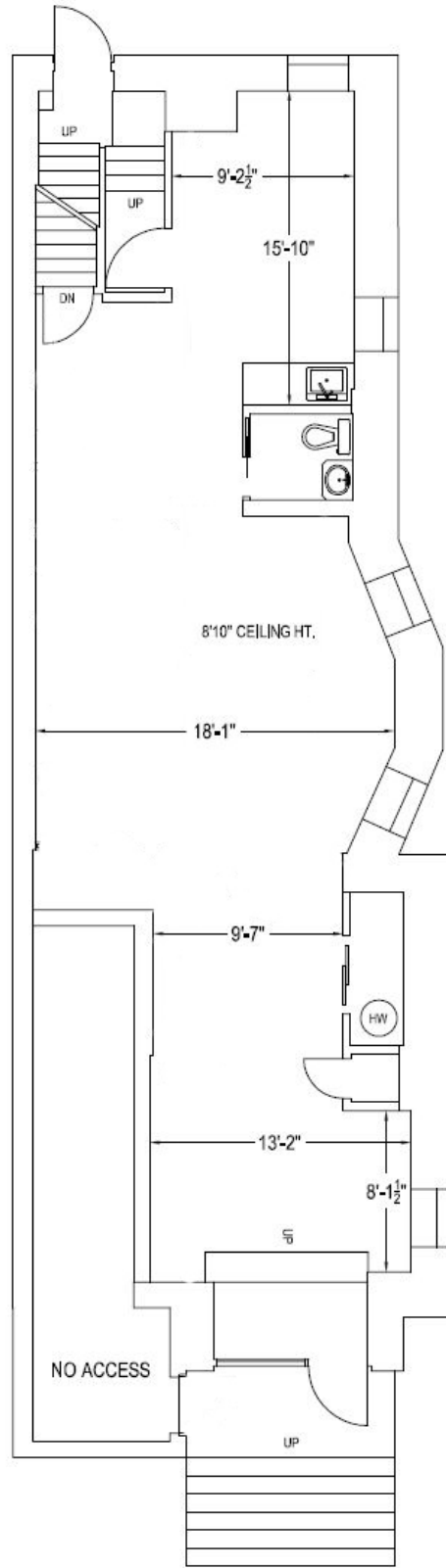
LOWER LEVEL
30 HAZELTON AVENUE

Size 1,372 sq. ft.
Net Rent \$40.00 per sq. ft.
TMI: \$26.55 per sq. ft.
Available: Immediately

- Located on the lower level of a beautifully renovated character building in the heart of Bloor-Yorkville
- Steps to an entrance to Yorkville Village Shopping Centre
- Direct neighbouring tenants include James Perse, Le Labo, Rodd & Gunn, Derek Rose, The Webster, Suitsupply, Atelier Munro, Whole Foods, Equinox and the Hazelton Hotel



FLOOR PLAN | 1,372 SF



HAZELTON AVE



Tenant Signage Opportunity



CBRE





CBRE

LOCATED AMONG THE CHARMING SHOPS OF HAZELTON AVENUE, IN THE HEART OF BLOOR-YORKVILLE

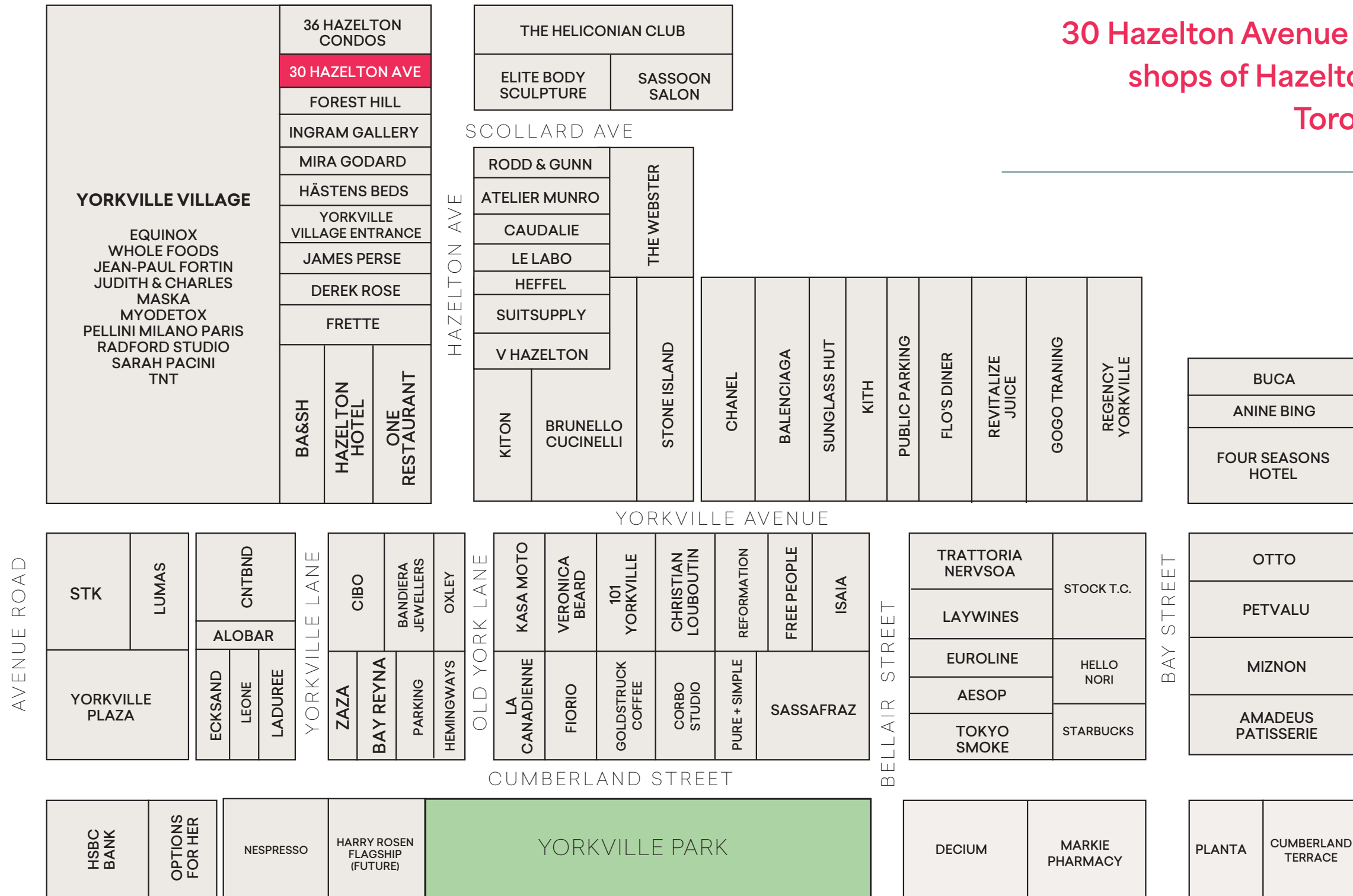


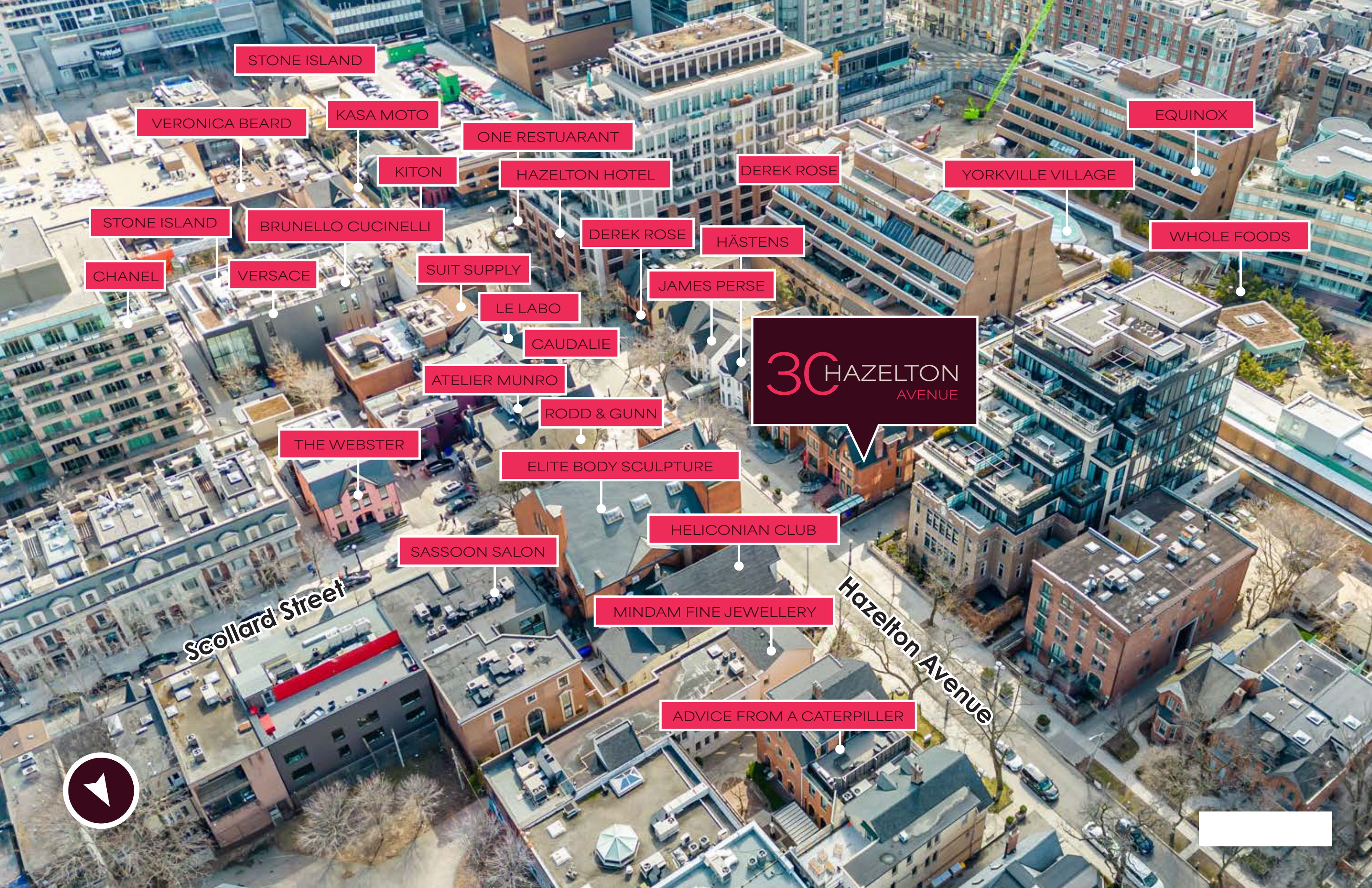
Yorkville Streetscape

30 Hazelton Avenue is situated among the charming shops of Hazelton in the heart of Bloor-Yorkville, Toronto's premier luxury retail node.

Hazelton Ave is home to numerous luxury boutiques and art galleries, including James Perse, Le Labo, Rodd & Gunn, Caudalie, Suitsupply Ingram Gallery and Derek Rose. Steps from 30 Hazelton is an entrance to Yorkville Village, a curated high-end shopping centre with tenants including Whole Foods, Equinox and TNT.

Just south of the property is Yorkville Avenue, where you will find luxury tenants including Chanel, Stone Island, KITH, Balenciaga, Brunello Cucinelli, Christian Louboutin, Versace and many others.





STONE ISLAND

VERONICA BEARD

KASA MOTO

ONE RESTUARANT

EQUINOX

KITON

HAZELTON HOTEL

DEREK ROSE

YORKVILLE VILLAGE

STONE ISLAND

BRUNELLO CUCINELLI

DEREK ROSE

HÄSTENS

WHOLE FOODS

CHANEL

VERSACE

SUIT SUPPLY

JAMES PERSE

LE LABO

CAUDALIE

ATELIER MUNRO

RODD & GUNN

30 HAZELTON AVENUE

THE WEBSTER

ELITE BODY SCULPTURE

HELICONIAN CLUB

SASSOON SALON

MINDAM FINE JEWELLERY

Scollard Street

Hazelton Avenue

ADVICE FROM A CATERPILLER





BLOOR-YORKVILLE Neighbouring Tenants

- Chanel
- Versace
- Christian Louboutin
- Whole Foods
- ba&sh
- Brunello Cucinelli
- Aesop
- Kasa Moto
- Stone Island
- Equinox
- Alo Bar
- Barry's Bootcamp
- Four Seasons Hotel
- One Restaurant
- Zaza Espresso Bar
- Sephora
- The Webster
- Veronica Beard
- John Elliott
- KITH
- Suitsupply
- James Perse

30 HAZELTON AVENUE

CONTACT

ARLIN MARKOWITZ*
Executive Vice President
416 815 2374
arlin.markowitz@cbre.com

ALEX EDMISON*
Senior Vice President
416 874 7266
alex.edmison@cbre.com

JACKSON TURNER**
Senior Vice President
416 815 2394
jackson.turner@cbre.com

EMILY EVERETT*
Sales Associate
647 943 4185
emily.everett@cbre.com

*Sales Representative **Broker

CBRE

This disclaimer shall apply to CBRE Limited, Real Estate Brokerage, and to all other divisions of the Corporation; to include all employees and independent contractors ("CBRE"). The information set out herein, including, without limitation, any projections, images, opinions, assumptions and estimates obtained from third parties (the "Information") has not been verified by CBRE, and CBRE does not represent, warrant or guarantee the accuracy, correctness and completeness of the Information. CBRE does not accept or assume any responsibility or liability, direct or consequential, for the Information or the recipient's reliance upon the Information. The recipient of the Information should take such steps as the recipient may deem necessary to verify the Information prior to placing any reliance upon the Information. The Information may change and any property described in the Information may be withdrawn from the market at any time without notice or obligation to the recipient from CBRE. CBRE and the CBRE logo are the service marks of CBRE Limited and/or its affiliated or related companies in other countries. All other marks displayed on this document are the property of their respective owners. All Rights Reserved.