



# ±4,800 SF

## Rock Center



240 S Rock Blvd. Ste 101

Reno, Nevada 89502



**Justin W. Noin**

justin@mckenzieproperties.com

Phone: (775) 329-5181

Cell: (775) 315-9088

5520 Kietzke Lane #400

Reno, NV 89511

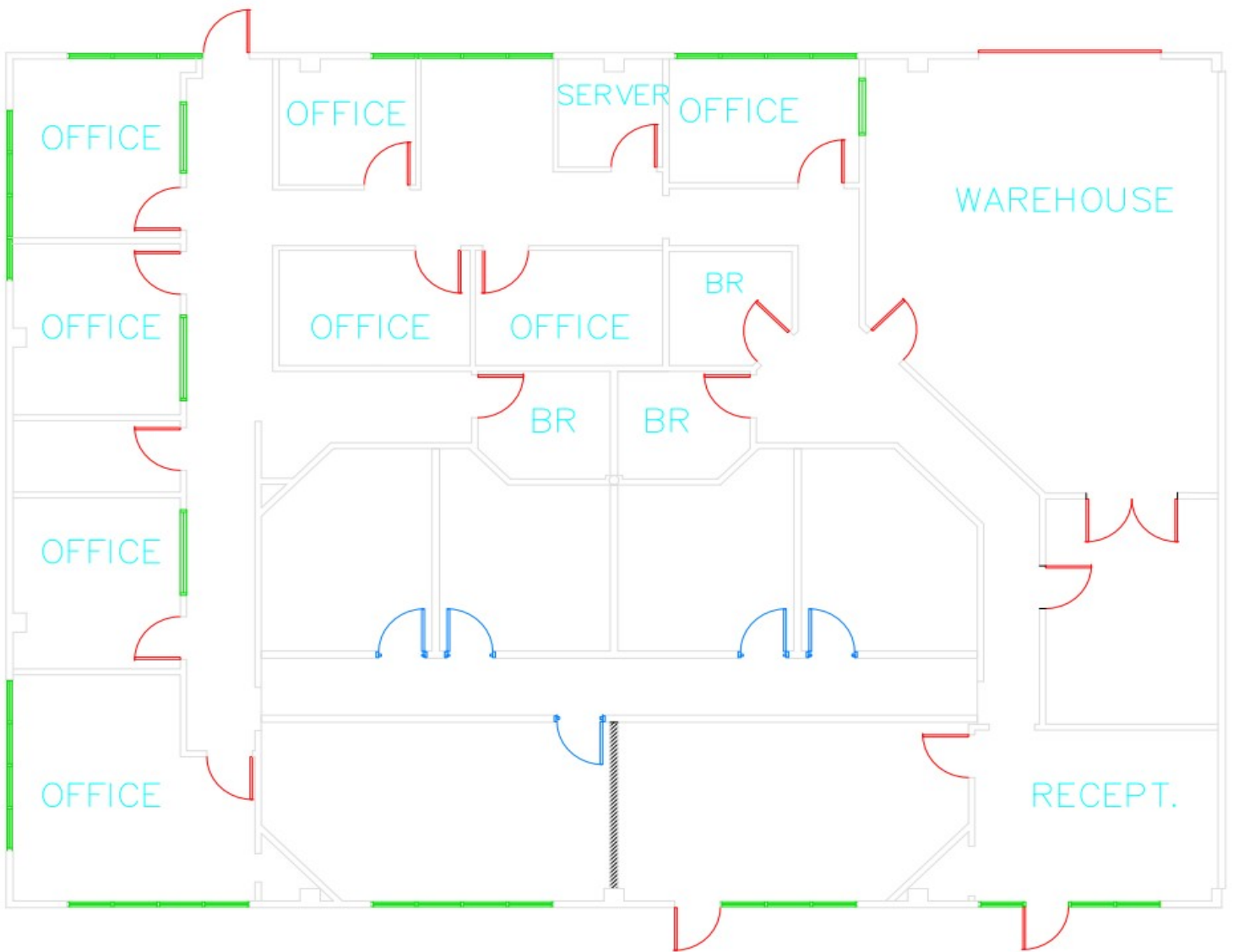
Lic #: B.1002722.CORP

### **BUILDING INFORMATION**

- Fantastic Central Location
- ±4,800 Total SF
- Small attached Warehouse
- 1 Drive-in Door
- Quick access to I-80 & I-580
- Adjacent to Reno Tahoe International Airport
- Flexible Tenant Improvements
- 4 / 1,000 sq ft parking ratio

# Rock Center

Floor Plan



## Sample Professional Office Finishes



**Justin W. Noin**

[justin@mckenzieproperties.com](mailto:justin@mckenzieproperties.com)

Phone: (775) 329-5181

Cell: (775) 315-9088

5520 Kietzke Lane #400

Reno, NV 89511

Lic #: B.1002722.CORP

# Rock Center

Location

240 S Rock Blvd, Ste 101  
Reno, Nevada 89502

DRIVE TIMES

<u>Location</u>	<u>Distance</u>	<u>Time</u>
I-80	1.8 Miles	6 Minutes
McCarran Blvd.	1.0 Miles	3 Minutes
I-580	1.4 Miles	5Minutes

