

FOR LEASE

1810 Murchison Dr
El Paso, Tx 79902

SPACE AVAILABLE
1,226-2837 SF



**HIETT
& ASSOCIATES**

PROPERTY MANAGEMENT

(915) 760-4533 | HiettAssociates.Com

5200 N Mesa St. Suite B-104 | El Paso, TX 79912

DEMOGRAPHIC SUMMARY 2025



POPULATION

45,174

5 MILE RADIUS



MEDIAN HH INCOME

\$42,206

5 MILE RADIUS



TRAFFIC COUNT

Murchison Dr

~2,000-5,000 VPD

Gateway East/ US 62

~5,000-10,000 VPD

AREA TRAFFIC GENERATORS

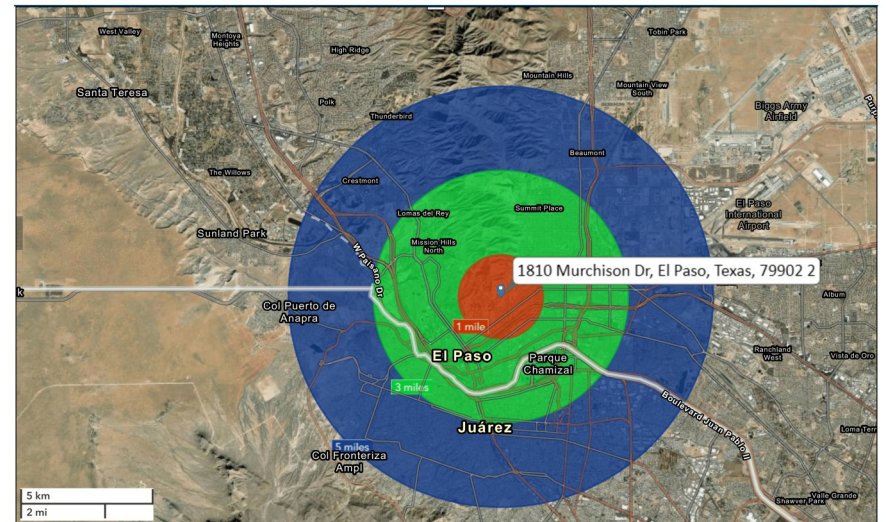


TRAFFIC COUNT MAP



Traffic count map 1-5 Mile Radius

Hiett & Associates LLC



August 06, 2025

SUITE 30

Located in the heart of El Paso's renowned Pill Hill Medical District, this recently renovated multi-tenant medical office building offers a prime opportunity for healthcare professionals and businesses seeking a high-visibility, modern workspace. Nestled at the base of the Franklin Mountains, the property is ideally positioned near major hospitals, commuter routes, and public transportation.

Property Highlights:

Situated in central El Paso, just 0.5 miles from The Hospitals of Providence Sierra Campus (Level 4 Trauma Center)

Within 3 miles of HCA and Tenet Hospital Systems

Easy access to I-10, public transit lines, and a short distance to Scenic Drive-Overlook Park

Modern upgrades throughout, including lobby, corridors, and common area restrooms

Updated HVAC systems, including cooling tower, heat pumps, and boiler

Abundant surface parking for staff and patients

Close proximity to local restaurants, retail, and professional services

Ideal for:

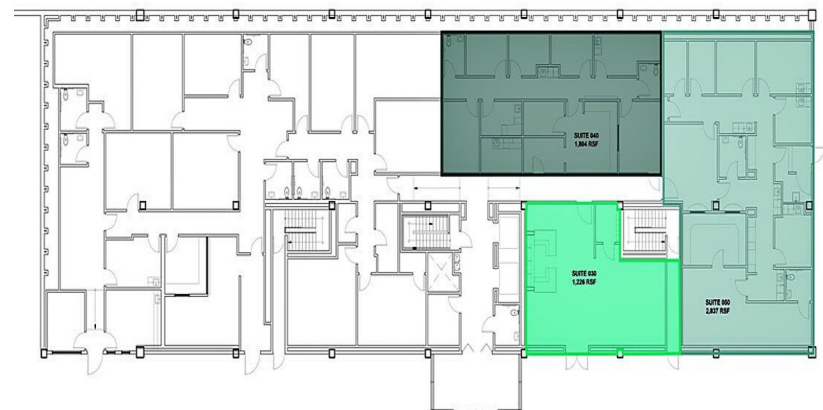
Physicians, dentists, physical therapists, wellness centers, or any medical-related professionals

Additional Benefits:

ADA-compliant access



HIETT
& ASSOCIATES



GROUND LEVEL FLOOR PLAN

SUITE 40

Located in the heart of El Paso's renowned Pill Hill Medical District, this recently renovated multi-tenant medical office building offers a prime opportunity for healthcare professionals and businesses seeking a high-visibility, modern workspace. Nestled at the base of the Franklin Mountains, the property is ideally positioned near major hospitals, commuter routes, and public transportation.

Property Highlights:

Multiple private offices built out for medical rooms

Situated in central El Paso, just 0.5 miles from The Hospitals of Providence Sierra Campus (Level 4 Trauma Center)

Within 3 miles of HCA and Tenet Hospital Systems

Easy access to I-10, public transit lines, and a short distance to Scenic Drive-Overlook Park

Modern upgrades throughout, including lobby, corridors, and common area restrooms

Updated HVAC systems, including cooling tower, heat pumps, and boiler

Abundant surface parking for staff and patients

Ideal for:

Physicians, dentists, physical therapists, wellness centers, or any medical-related professionals

Additional Benefits:

ADA-compliant access



HIETT
& ASSOCIATES

SUITE 50

Located in the heart of El Paso's renowned Pill Hill Medical District, this recently renovated multi-tenant medical office building offers a prime opportunity for healthcare professionals and businesses seeking a high-visibility, modern workspace. Nestled at the base of the Franklin Mountains, the property is ideally positioned near major hospitals, commuter routes, and public transportation.

Property Highlights:

Multiple private offices built out for medical rooms

Situated in central El Paso, just 0.5 miles from The Hospitals of Providence Sierra Campus (Level 4 Trauma Center)

Within 3 miles of HCA and Tenet Hospital Systems

Easy access to I-10, public transit lines, and a short distance to Scenic Drive-Overlook Park

Modern upgrades throughout, including lobby, corridors, and common area restrooms

Updated HVAC systems, including cooling tower, heat pumps, and boiler

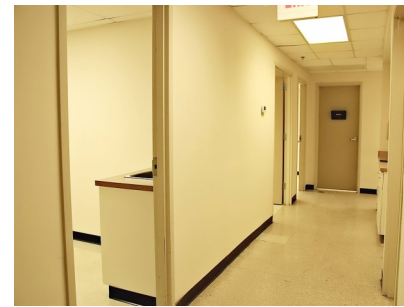
Abundant surface parking for staff and patients

Ideal for:

Physicians, dentists, physical therapists, wellness centers, or any medical-related professionals

Additional Benefits:

ADA-compliant access



HIETT
& ASSOCIATES

SUITE 100

Located in the heart of El Paso's renowned Pill Hill Medical District, this recently renovated multi-tenant medical office building offers a prime opportunity for healthcare professionals and businesses seeking a high-visibility, modern workspace. Nestled at the base of the Franklin Mountains, the property is ideally positioned near major hospitals, commuter routes, and public transportation.

Property Highlights:

Multiple private offices built out for medical rooms

Situated in central El Paso, just 0.5 miles from The Hospitals of Providence Sierra Campus (Level 4 Trauma Center)

Within 3 miles of HCA and Tenet Hospital Systems

Easy access to I-10, public transit lines, and a short distance to Scenic Drive-Overlook Park

Modern upgrades throughout, including lobby, corridors, and common area restrooms

Updated HVAC systems, including cooling tower, heat pumps, and boiler

Abundant surface parking for staff and patients

Ideal for:

Physicians, dentists, physical therapists, wellness centers, or any medical-related professionals

Additional Benefits:

ADA-compliant access



HIETT
& ASSOCIATES

SUITE 130

Located in the heart of El Paso's renowned Pill Hill Medical District, this recently renovated multi-tenant medical office building offers a prime opportunity for healthcare professionals and businesses seeking a high-visibility, modern workspace. Nestled at the base of the Franklin Mountains, the property is ideally positioned near major hospitals, commuter routes, and public transportation.

Property Highlights:

Multiple private offices built out for medical rooms

Situated in central El Paso, just 0.5 miles from The Hospitals of Providence Sierra Campus (Level 4 Trauma Center)

Within 3 miles of HCA and Tenet Hospital Systems

Easy access to I-10, public transit lines, and a short distance to Scenic Drive-Overlook Park

Modern upgrades throughout, including lobby, corridors, and common area restrooms

Updated HVAC systems, including cooling tower, heat pumps, and boiler

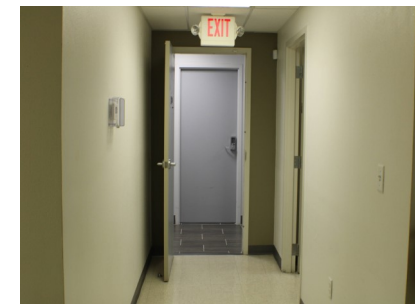
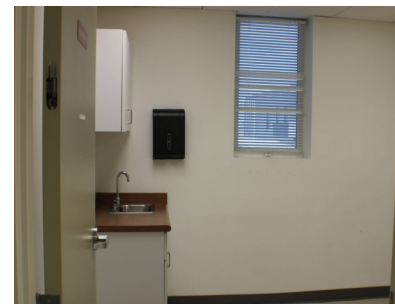
Abundant surface parking for staff and patients

Ideal for:

Physicians, dentists, physical therapists, wellness centers, or any medical-related professionals

Additional Benefits:

ADA-compliant access



FIRST LEVEL FLOOR PLAN

Information About Brokerage Services

Texas law requires all real estate license holders to give the following information about brokerage services to prospective buyers, tenants, sellers and landlords.

TYPES OF REAL ESTATE LICENSE HOLDERS:

- A BROKER is responsible for all brokerage activities, including acts performed by sales agents sponsored by the broker.
- A SALES AGENT must be sponsored by a broker and works with clients on behalf of the broker.

A BROKER'S MINIMUM DUTIES REQUIRED BY LAW (A client is the person or party that the broker represents):

- Put the interests of the client above all others, including the broker's own interests;
- Inform the client of any material information about the property or transaction received by the broker;
- Answer the client's questions and present any offer to or counter-offer from the client; and
- Treat all parties to a real estate transaction honestly and fairly.

A LICENSE HOLDER CAN REPRESENT A PARTY IN A REAL ESTATE TRANSACTION:

AS AGENT FOR OWNER (SELLER/LANDLORD): The broker becomes the property owner's agent through an agreement with the owner, usually in a written listing to sell or property management agreement. An owner's agent must perform the broker's minimum duties above and must inform the owner of any material information about the property or transaction known by the agent, including information disclosed to the agent or subagent by the buyer or buyer's agent. An owner's agent fees are not set by law and are fully negotiable.

AS AGENT FOR BUYER/TENANT: The broker becomes the buyer/tenant's agent by agreeing to represent the buyer, usually through a written representation agreement. A buyer's agent must perform the broker's minimum duties above and must inform the buyer of any material information about the property or transaction known by the agent, including information disclosed to the agent by the seller or seller's agent. A buyer/tenant's agent fees are not set by law and are fully negotiable.

AS AGENT FOR BOTH - INTERMEDIARY: To act as an intermediary between the parties the broker must first obtain the written agreement of each party to the transaction. The written agreement must state who will pay the broker and, in conspicuous bold or underlined print, set forth the broker's obligations as an intermediary. A broker who acts as an intermediary:

- Must treat all parties to the transaction impartially and fairly;
- May, with the parties' written consent, appoint a different license holder associated with the broker to each party (owner and buyer) to communicate with, provide opinions and advice to, and carry out the instructions of each party to the transaction.
- Must not, unless specifically authorized in writing to do so by the party, disclose:
 - that the owner will accept a price less than the written asking price;
 - that the buyer/tenant will pay a price greater than the price submitted in a written offer; and
 - any confidential information or any other information that a party specifically instructs the broker in writing not to disclose, unless required to do so by law.

AS SUBAGENT: A license holder acts as a subagent when aiding a buyer in a transaction without an agreement to represent the buyer. A subagent can assist the buyer but does not represent the buyer and must place the interests of the owner first.

TO AVOID DISPUTES, ALL AGREEMENTS BETWEEN YOU AND A BROKER SHOULD BE IN WRITING AND CLEARLY ESTABLISH:

- The broker's duties and responsibilities to you, and your obligations under the representation agreement.
- Who will pay the broker for services provided to you, when payment will be made and how the payment will be calculated.

LICENSE HOLDER CONTACT INFORMATION: This notice is being provided for information purposes. It does not create an obligation for you to use the broker's services. Please acknowledge receipt of this notice below and retain a copy for your records.

HIETT & Associates LLC
Licensed Broker /Broker Firm
Jason Hiett
Designated Broker of Firm
Hilda Cisneros
Associate's Name

9012390
License No.
586674
License No.
630854
License No.

Jason@HiettAssociates.com
Email
Jason@HiettAssociates.com
Email
Hilda@HiettAssociates.com
Email

(915) 760-4533
Phone
(915) 760-4533
Phone
(915) 760-4533
Phone

Buyer/Tenant/Seller/Landlord Initials

Date

Regulated by the Texas Real Estate Commission

Information available at www.trec.texas.gov