

OFFICE SPACE
FOR LEASE

2902 N Armenia Ave

TAMPA, FLORIDA • 33607



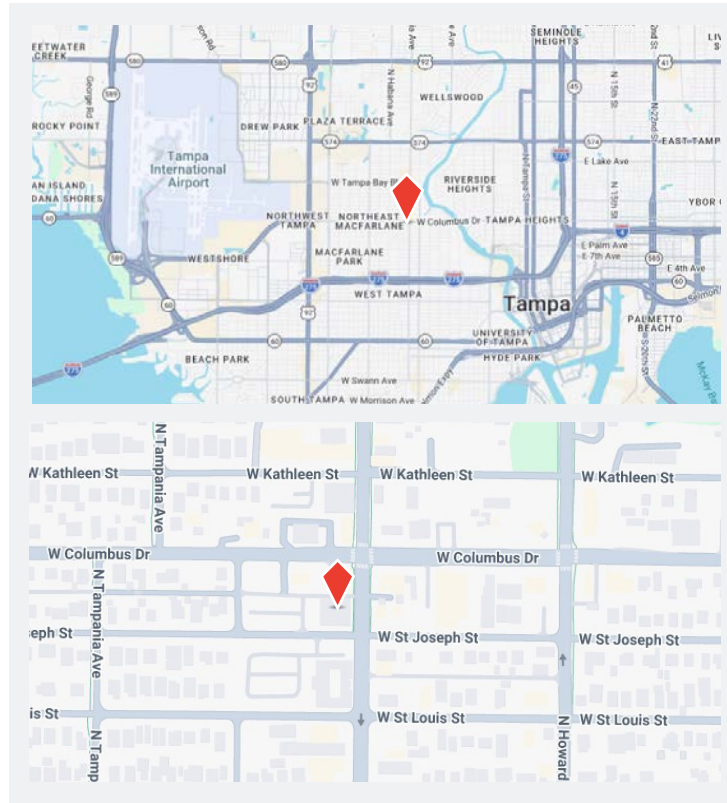
IDEAL OFFICE SPACE OPPORTUNITY

PROPERTY OVERVIEW

Property Type	Office
Property Size	15,200 sf
Class	B
Year Built	2011
Parking	3.68/1,000

HIGHLIGHTS

- + New exterior paint coming soon
- + Ample parking with a ratio of 3.68/1,000
- + Located on the corner of N Armenia Ave and W St Joseph St
- + 1 block south of W Columbus Dr
- + Easy access to I-275, N Dale Mabry Hwy, and US 41
- + 11 minutes to Tampa International Airport



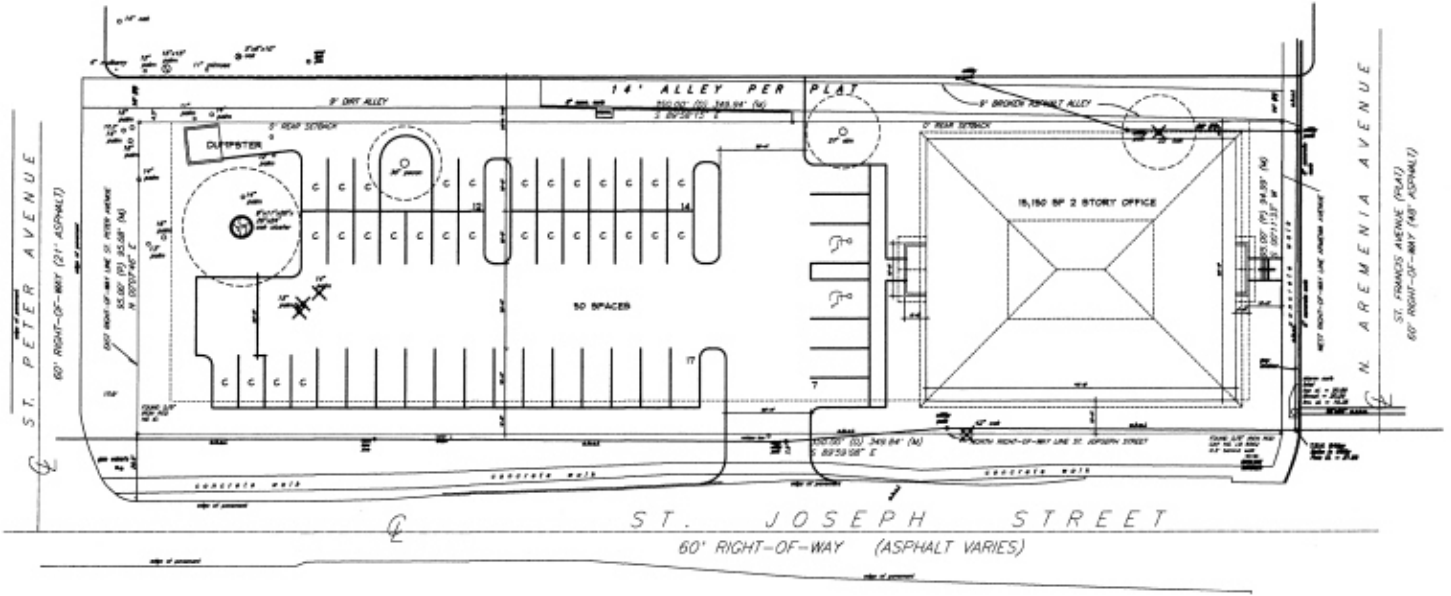
Thomas Hernandez, SIOR, CCIM
(813) 494-4090 mobile
thernandez@ciminelli.com



OFFICE SPACE
FOR LEASE

2902 N Armenia Ave

TAMPA, FLORIDA • 33607



Thomas Hernandez, SIOR, CCIM
(813) 494-4090 mobile
thernandez@ciminelli.com



OFFICE SPACE
FOR LEASE

2902 N Armenia Ave

TAMPA, FLORIDA • 33607



Thomas Hernandez, SIOR, CCIM
(813) 494-4090 mobile
thernandez@ciminelli.com

