

**The Troy Centre:
 Office Space For Lease**

2095 West 6th Ave., Broomfield, CO 80020



Property Highlights

- Building signage available
- 2 common conference rooms available
- Open spacious restrooms w/ showers on both levels
- T-1, DSL & Comcast available
- On site management
- Just west of Hwy. 287, easy access
- Easy access to Hwy. 36, Hwy 287 and NW Parkway

Lease Details:

Space available:
 Please see below
Max contiguous:
 7,873 RSF
Lease Rate:
 \$21.50/SF Modified Gross
Lease Term:
 3-5 years

Availability:

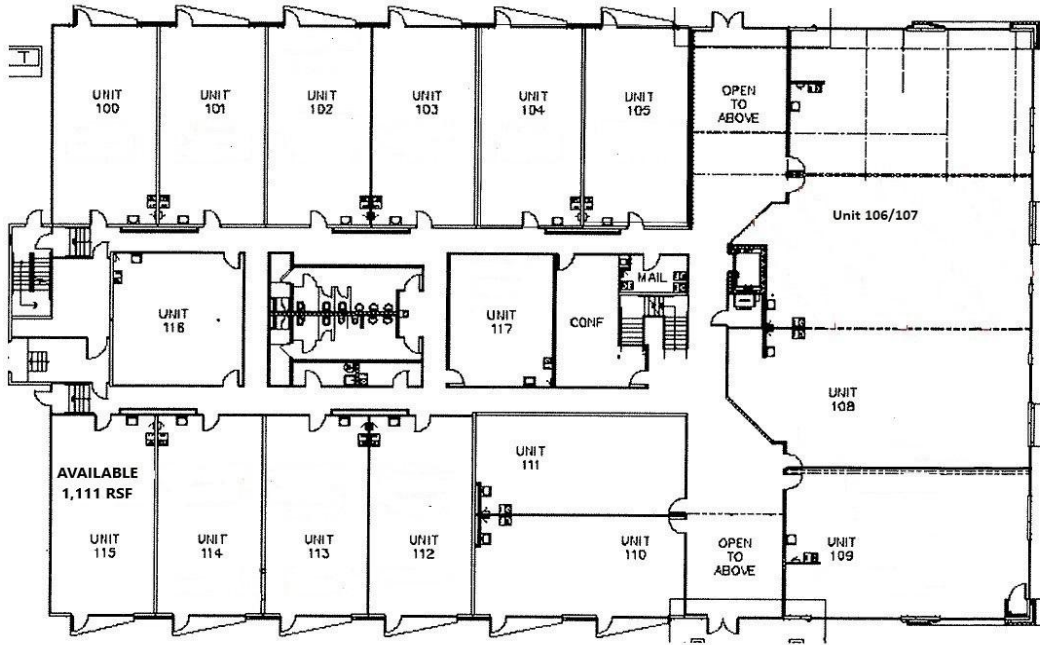
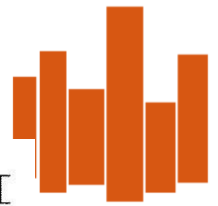
Unit: 115
 Unit 205
 Unit: 206
 Unit 208
 206 & 208 can be combined

Square Feet

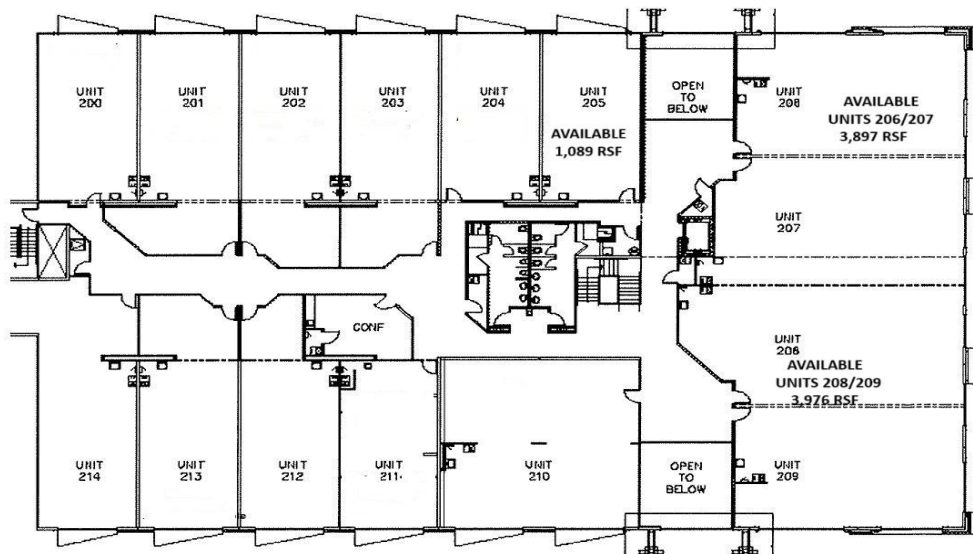
1,111 RSF
 1,089 RSF
 3,897 RSF
 3,976 RSF
 7,873 RSF



*Exclusively represented by Vista Commercial Advisors: Chip McReynolds
 303-974-7600 ext. 102 or mcreynolds@vistacommercial.com*



First Floor



Second Floor