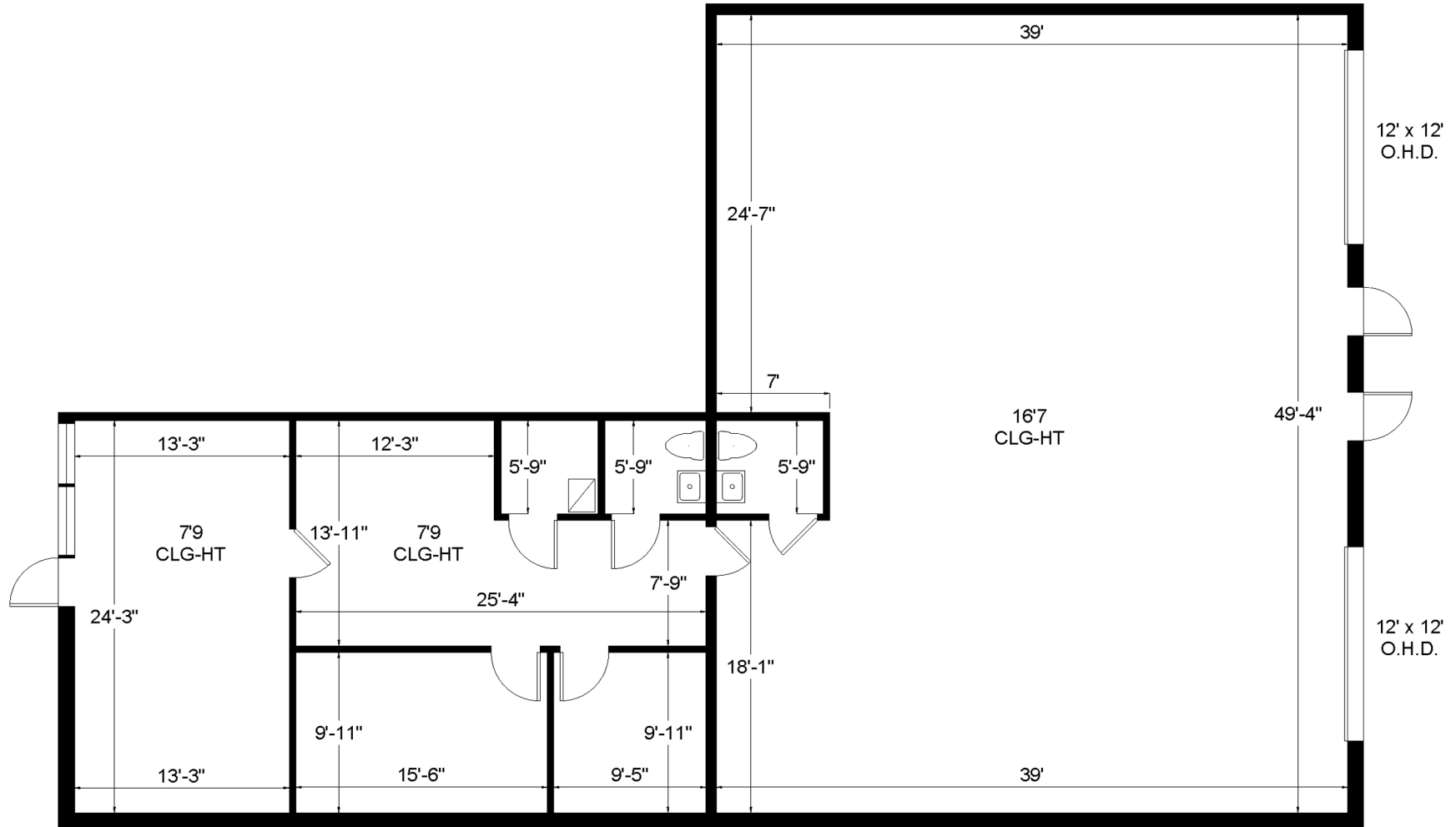


SUNRISE COMMERCE PARK

4747 N Nob Hill Road, Unit 13 | Sunrise, FL 33351



Office - 1,029 Sq. Ft.
Warehouse - 2,044 Sq. Ft.



Haley Presser | Property Manager | 954.491.5505 | Haley@levyrai.com
4901 NW 17th Way, Suite 103 | Ft. Lauderdale, FL 33309

3,073 Rentable Sq. Ft.
www.LevyRealtyAdvisors.com