

FOR SALE

Unit 120 & 125

2771 Progressive Way, Abbotsford, BC



UNIT FEATURES

UNIT SIZE

Warehouse	3,566 sf
Mezzanine	715 sf
TOTAL	4,281 sf

ZONING

I2 – General Industrial Zoning

Principal uses include:

- Automotive
- Warehousing
- Storage
- Manufacturing
- Building Supply
- Recycling

YEAR BUILT

2017

AVAILABILITY

On Notice

UNIT HIGHLIGHTS



Desirable front-loading configuration



Two (2) grade level loading door (12' W x 16' H)



24' clear ceiling height



100 amp, 3-phase electrical service



Two (2) washrooms



LED lighting



Four (4) designated parking stalls plus ample visitor parking (Subject to LCP)



Attractive opportunity for business owners or investors

**GREAT
NORTHERN**
INDUSTRIAL PARK

greatnorthernindustrialpark.com

ILYA TIHANENOKS

Principal

604 260 1869

ilya.t@avisonyoung.com

GORD ROBSON*

Principal

604 647 1331

gord.robson@avisonyoung.com

**Personal Real Estate Corporation*

RILEY STEPHEN

Sales Assistant

604 757 4924

riley.stephen@avisonyoung.com

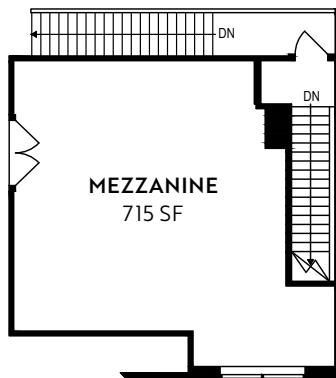
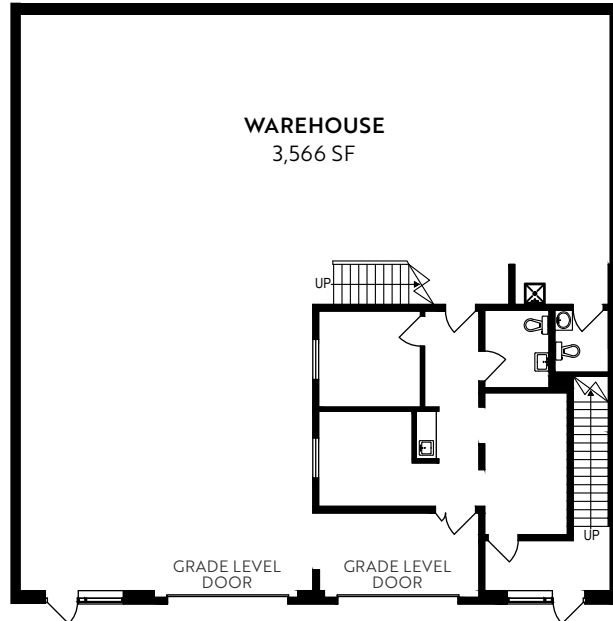
CanFirst
CAPITAL MANAGEMENT

**AVISON
YOUNG**

FOR SALE

Unit 120 & 125

2771 Progressive Way, Abbotsford, BC



**GREAT
NORTHERN**
INDUSTRIAL PARK

greatnorthernindustrialpark.com

ILYA TIHANENOKS

Principal
604 260 1869
ilya.t@avisonyoung.com

GORD ROBSON*

Principal
604 647 1331
gord.robson@avisonyoung.com
**Personal Real Estate Corporation*

RILEY STEPHEN

Sales Assistant
604 757 4924
riley.stephen@avisonyoung.com

CanFirst
CAPITAL MANAGEMENT

**AVISON
YOUNG**