

PENN BUILDING - PROFESSIONALLY MANAGED OFFICE SPACE LOCATED JUST SOUTH OF I-496



FOR LEASE
1115 S. Pennsylvania Ave.
Lansing, MI

**Available: Up
to 5,673 SF**

ERIC F. ROSEKRANS, CCIM, CPM
Executive Vice President
Direct: 517 319-9209
eric.rosekrans@martincommercial.com

THOMAS JAMIESON, SIOR
Senior Vice President, Office Advisor
Direct: 517 319-9235
thomas.jamieson@martincommercial.com


Martin

1111 Michigan Ave., Ste 300
East Lansing, MI 48823
martincommercial.com



Office Space Centrally Located on Pennsylvania Avenue

The Penn Building is a 49,000 SF two-story building with flex space in the back. Up to 5,673 SF available on the second floor. Sign opportunities include large pylon and building signage along Pennsylvania Avenue.

The property has +240' of frontage on Pennsylvania Avenue and spans the lighted corner at Haco Drive and also Walsh Street, which gives access to supplemental parking to the north. The property is only 2 blocks south of I-496 with nearly 15,000 vehicles per day on Pennsylvania Avenue.

LEASE RATE:

\$9.75

PSF/YR, +JANITORIAL

AVAILABLE SPACE:


2nd Floor Office Space:

Suite 201: 1,738 SF


Suite 202: 3,935 SF


PROPERTY INFORMATION


 **AVAILABLE:**
Up to 5,673 SF

 **SIGNAGE:** Pylon and Building

 **PARKING:**
70 Spaces

 **EASY ACCESS:**
from 3 streets

 **DOWNTOWN:**
5 minutes away

 **WALKING DISTANCE:**
to Lansing River Trail & Potter Park Zoo

© 2026 MARTIN COMMERCIAL PROPERTIES, INC. ALL RIGHTS RESERVED. THIS INFORMATION HAS BEEN OBTAINED FROM SOURCES BELIEVED RELIABLE BUT HAS NOT BEEN VERIFIED FOR ACCURACY OR COMPLETENESS. YOU SHOULD CONDUCT A CAREFUL, INDEPENDENT INVESTIGATION OF THE PROPERTY AND VERIFY ALL INFORMATION. ANY RELIANCE ON THIS INFORMATION IS SOLELY AT YOUR OWN RISK. MARTIN COMMERCIAL PROPERTIES AND THE MARTIN LOGO ARE SERVICE MARKS OF MARTIN COMMERCIAL PROPERTIES, INC. ALL OTHER MARKS DISPLAYED ON THIS DOCUMENT ARE THE PROPERTY OF THEIR RESPECTIVE OWNERS. PHOTOS HEREIN ARE THE PROPERTY OF THEIR RESPECTIVE OWNERS. USE OF THESE IMAGES WITHOUT THE EXPRESS WRITTEN CONSENT OF THE OWNER IS PROHIBITED.

PENN BUILDING

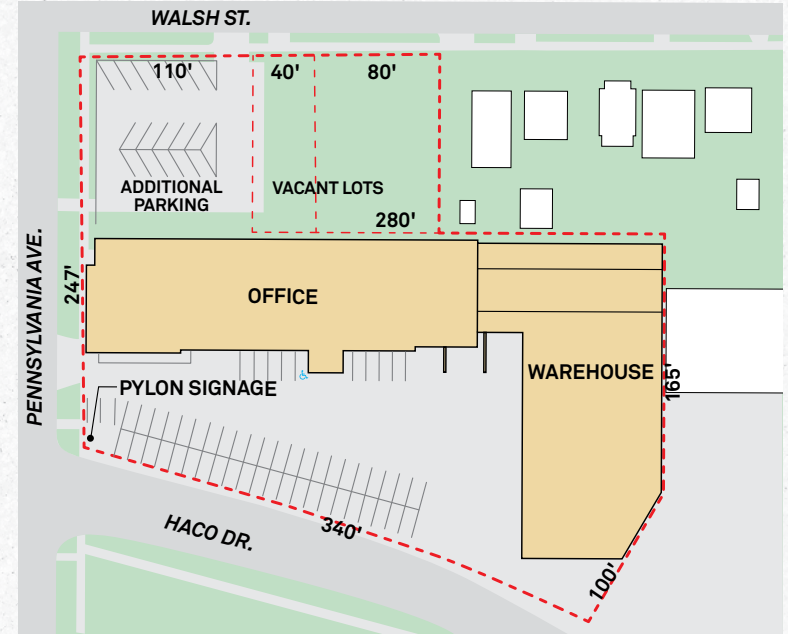
1115 S. Pennsylvania Avenue, Lansing, MI



GALLERY



SITE PLAN

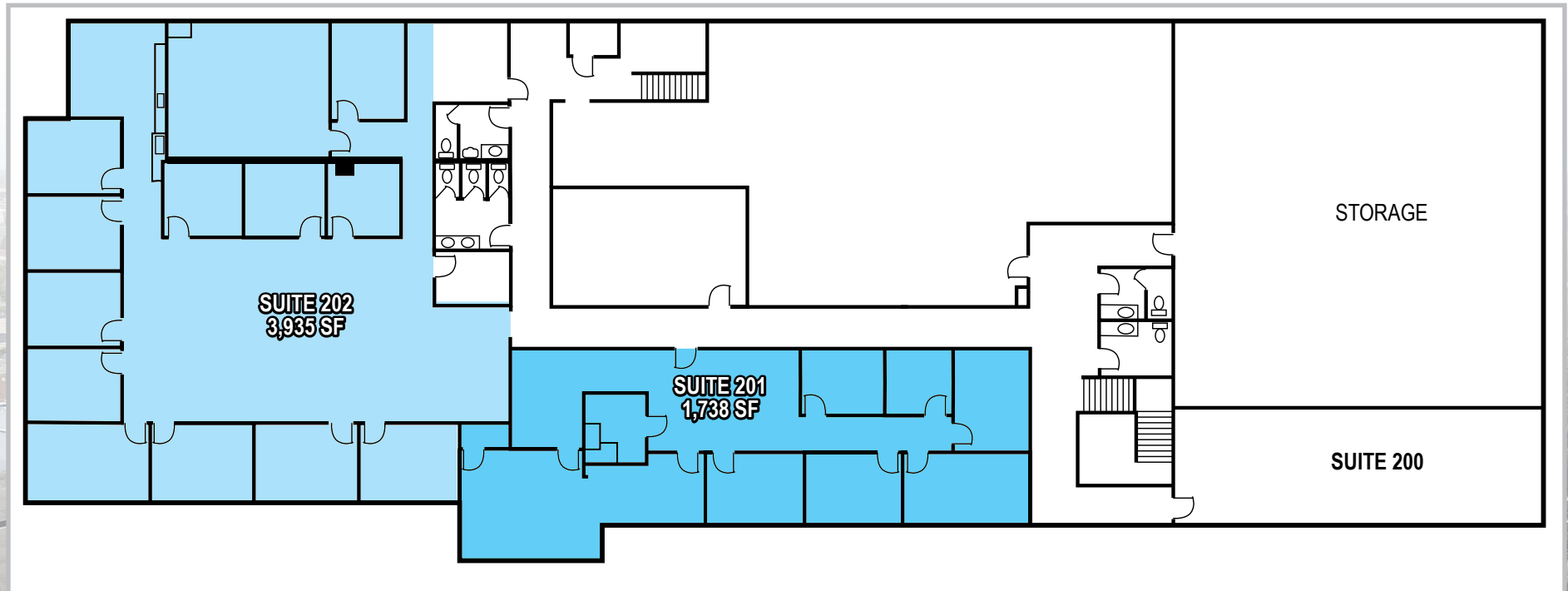


PENN BUILDING

1115 S. Pennsylvania Avenue, Lansing, MI

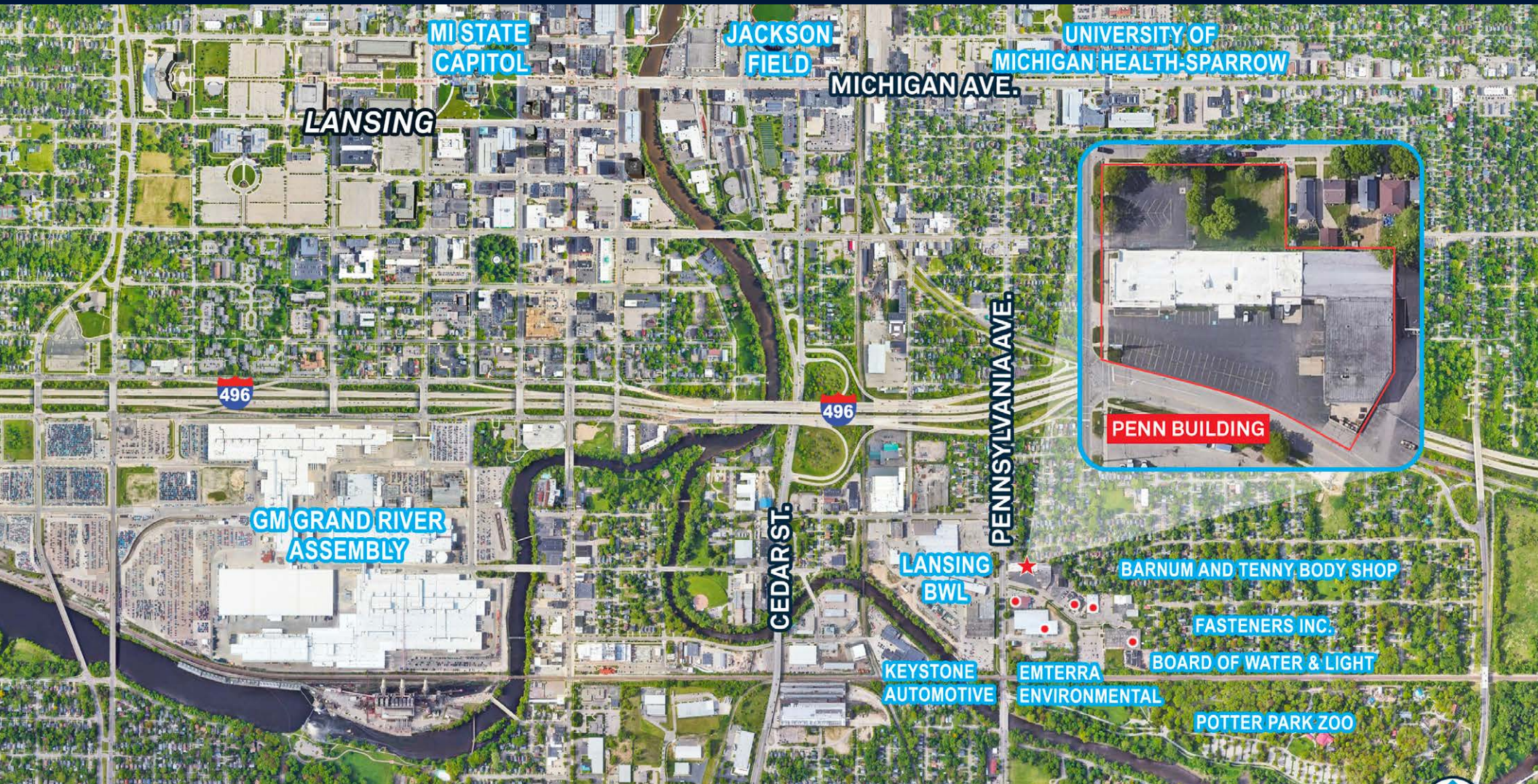


FLOOR PLAN: SECOND FLOOR



PENN BUILDING

1115 S. Pennsylvania Avenue, Lansing, MI



AREA INFORMATION

2 Blocks
to I-496 interchange

<0.5 Miles
to Lansing River Trail
and Potter Park Zoo

1 Mile
to UM Health-Sparrow

5 Minutes
to Downtown

1.5 Miles
to GM Lansing
Grand River Assembly

Conveniently
located on busy Pennsylvania
Avenue, near downtown and
interstates