



Clift Building

10 West Broadway | Salt Lake City, UT



WELCOME TO CLIFT BUILDING

Salt Lake City's Premier Historic Building

Blending Modern Amenities with Historic Charm

Take a step back in time at Clift Building, Salt Lake City's Premier Historic Building, located on the corner of Main Street and Broadway, at 10 West Broadway. Clift Building is a true period piece, blending state of the art mechanical, electrical, and sprinkler systems, with authentic period finishes throughout, creating a tailored tenant experience with high end fitness center, rooftop deck, and lounge and curated spaces.



BUILDING FEATURES



Building size:
106,740 SF



Suites Ranging from 3,254
to 14,904 SF



Starting at \$30 FSG



Functional spaces with large windows,
exposed brick & open ceilings



Clift Club - Rooftop lounge with game
room, flexible conference & catering
area, and private deck



State of the art rooftop fitness
center with exterior deck and
single stall showers



Freshly renovated lobby



Onsite retailers: Itto Sushi and
Bank of America



Convenient parking located
immediately in front and within 1 block



Direct TRAX access & quick connections to
high speed rail



Day porter onsite



Three high-speed
elevators



Locally Owned with Professional
Local Property Management



Newly upgraded systems
throughout



Rooftop Reimagined

Welcome to the Clift Club, featuring Downtown Salt Lake's only rooftop terrace lounge, The Nest, and fitness center. Established in 2025, Clift Club is a thoughtfully planned amenity for all Clift Tenants. The space features soft seating, a gas fire table, grille, and an interior space that can flexibly accommodate an all-hands meeting or company party, keeping it as formal or casual as needed. A few steps up is The Nest, our private game room, which features an original 1920s billiards table.



The Fitness Center showcases the best treadmill views Downtown has to offer, inclusive of a rooftop exterior component, commercial grade equipment, a Pilates stretching area, and new single stall showers with towel service.

Designed with Wellness in Mind



SECOND FLOOR

5,965 RSF

- Move-in ready
- Glass front offices
- Eat-in Kitchen

3,254 RSF

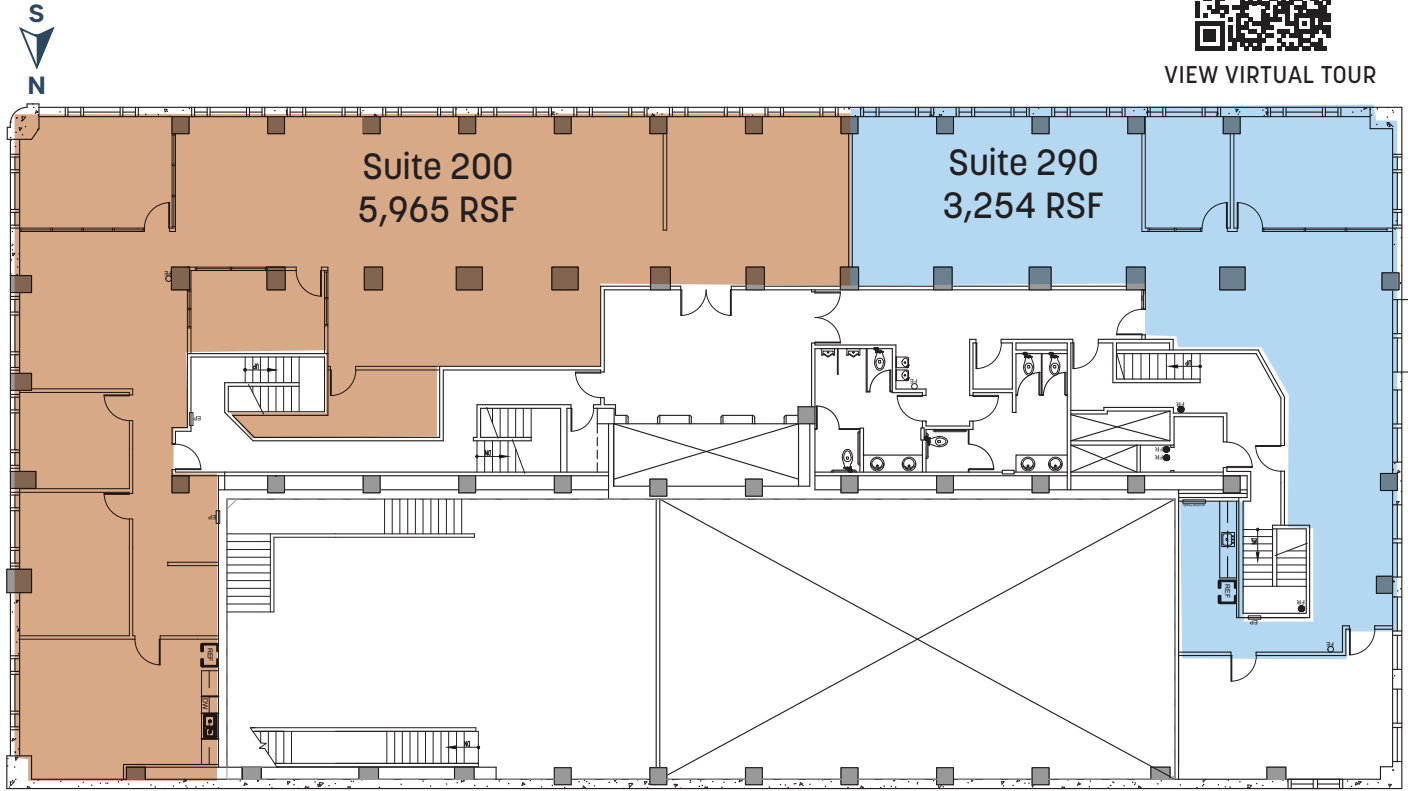
- Move-in ready
- Small Kitchnette
- Main Street views



VIEW CONCEPTUAL PLAN



VIEW VIRTUAL TOUR



Can be combined for a total of 9,219 RSF



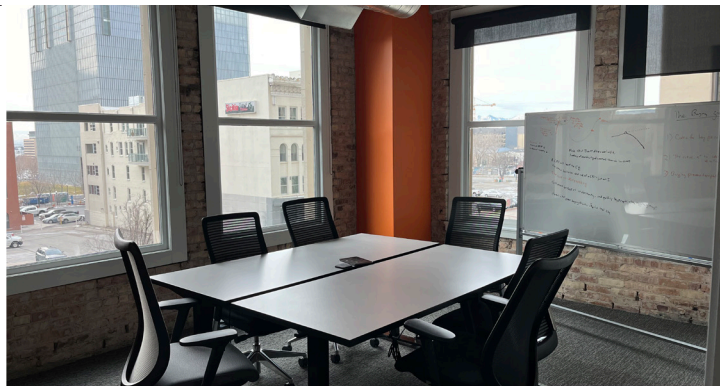
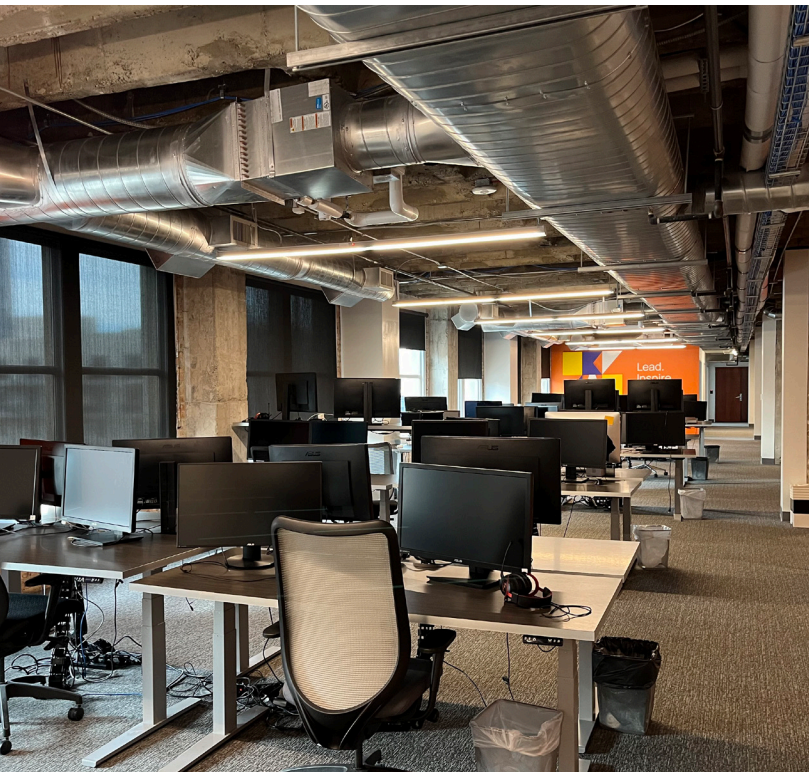
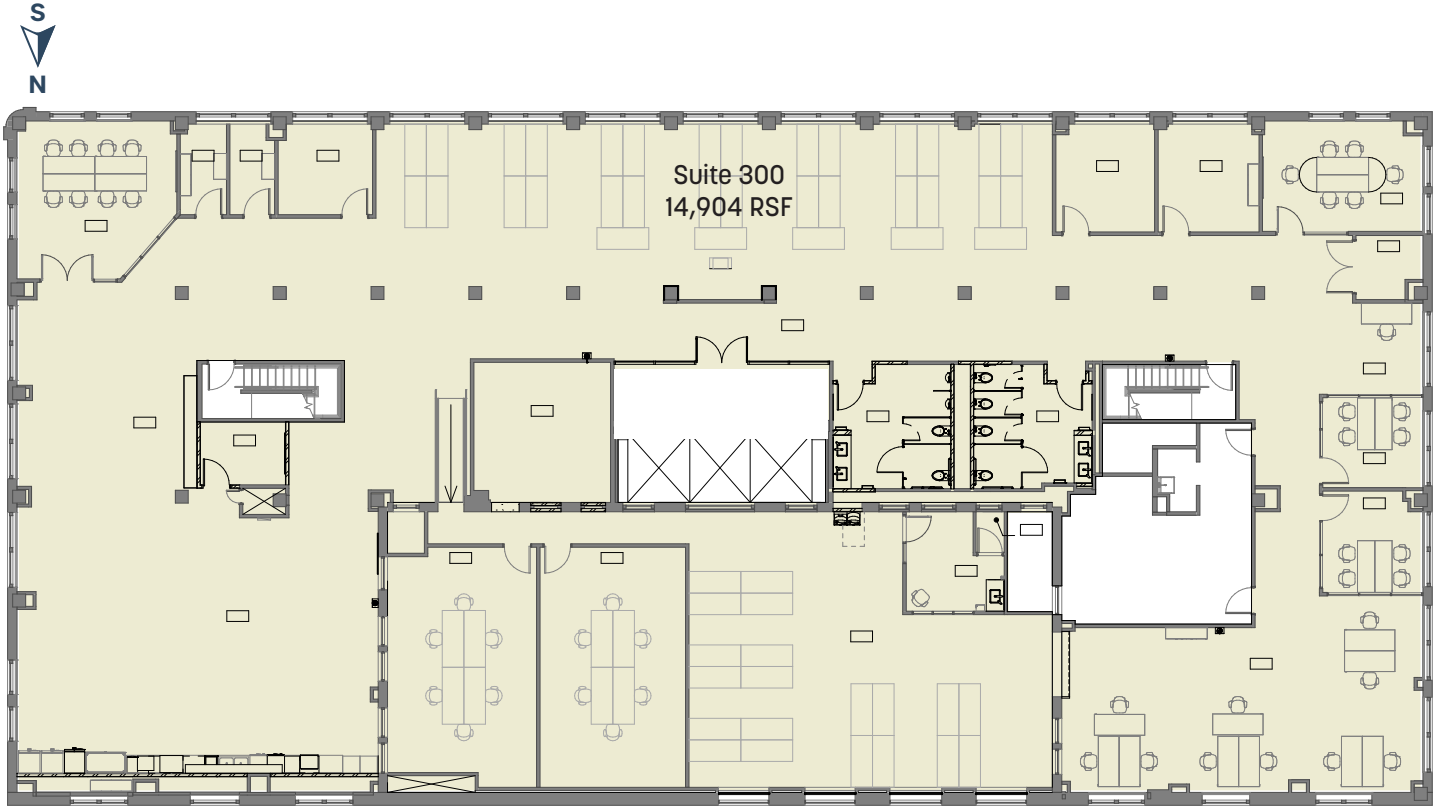
THIRD FLOOR

14,904 RSF

- Move-In ready & furnished with sit to stand desks
- Mix of open and office space
- Creative space with exposed ceilings



VIEW CONCEPTUAL PLAN



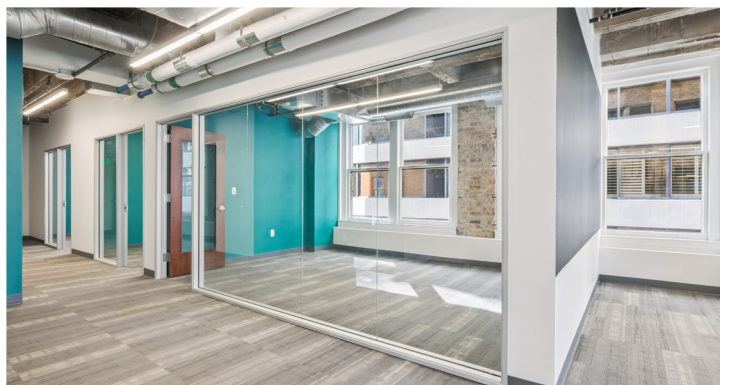
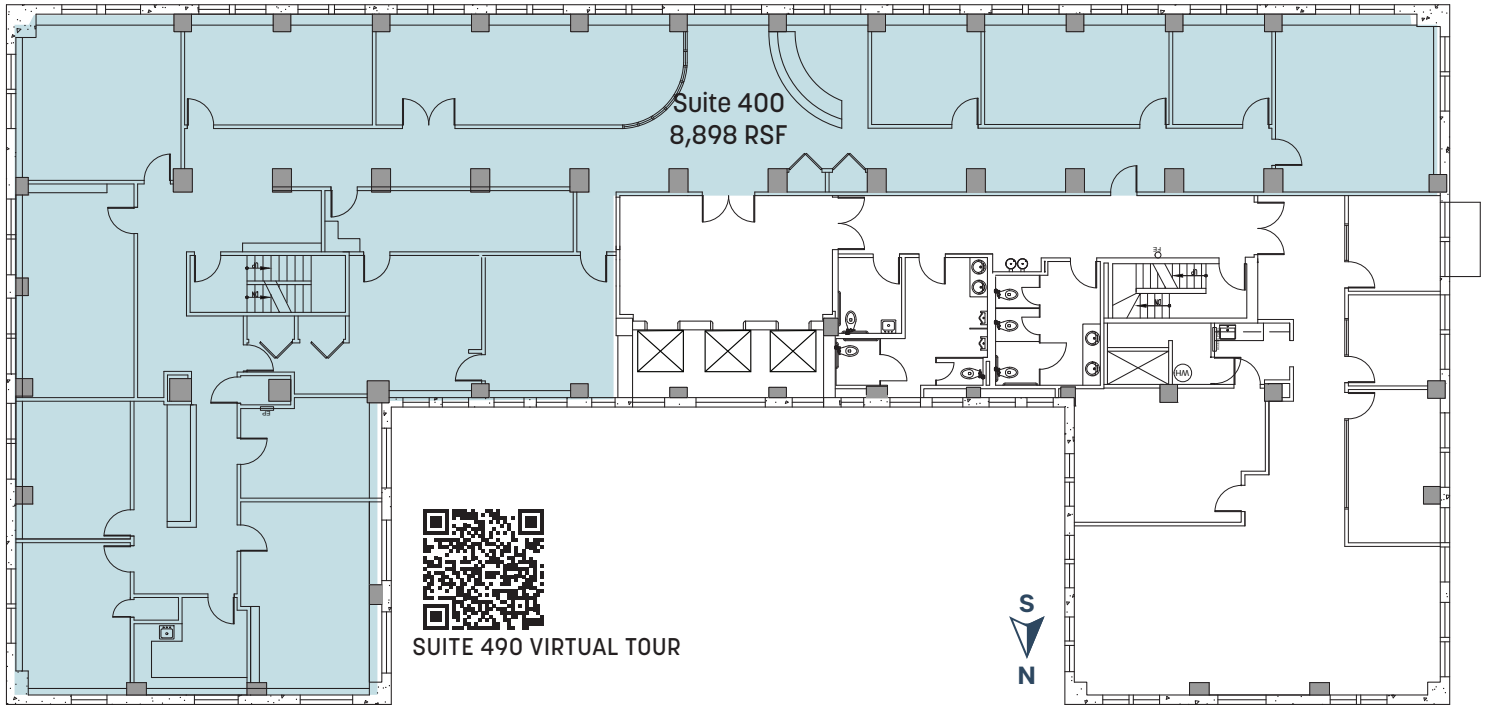
FOURTH FLOOR

8,898 RSF

- Second Generation Space with generous Tenant Improvement Allowance Available
- Strong elevator lobby presence



VIEW CONCEPTUAL PLAN



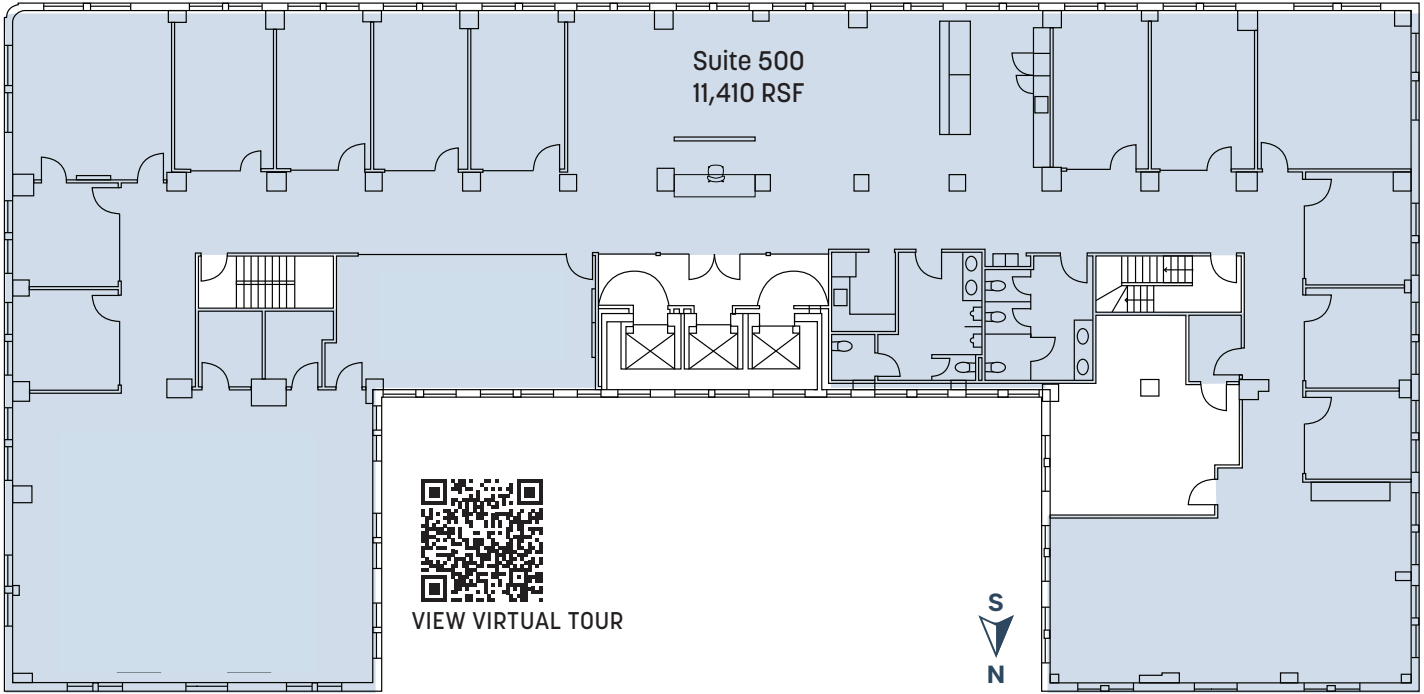
FIFTH FLOOR

11,410 RSF

- Full floor with strong elevator presence
- Highly creative finishes with glass front offices
- Spacious kitchen and collaboration area



[VIEW CONCEPTUAL PLAN](#)



GROCERY & DEPARTMENT STORES

- 1. Nordstrom
- 2. Macy's
- 3. Harmon's Grocery
- 4. Smiths

EATERIES

- 1. Starbucks
- 2. Einstein Brothers
- 3. Beans & Brews Coffee House
- 4. Brio Italian Grille
- 5. Shake Shack
- 6. Capital Grille
- 7. The Cheesecake Factory
- 8. Chick-fil-A
- 9. Caputo's Market & Deli
- 10. Current Fish & Oyster Bar
- 11. Gourmandise
- 12. P.F. Chang's
- 13. Siegfried's
- 14. Bambara
- 15. Eva's Bakery

- 16. Pretty Bird
- 17. From Scratch
- 18. Spitz
- 19. Arempas
- 20. Aker Restaurant & Lounge
- 21. Takashi

HOTELS

- 1. Kimpton Hotel
- 2. Holiday Inn
- 3. AC Hotel by Marriott
- 4. Le Meridien
- 5. Marriott City Center
- 6. Radisson Hotel
- 7. Fairfield Inn & Suites
- 8. Hampton Inn
- 9. Residence Inn by Marriott
- 10. Hyatt Regency
- 11. Element
- 12. Hyatt House
- 13. Courtyard by Marriott

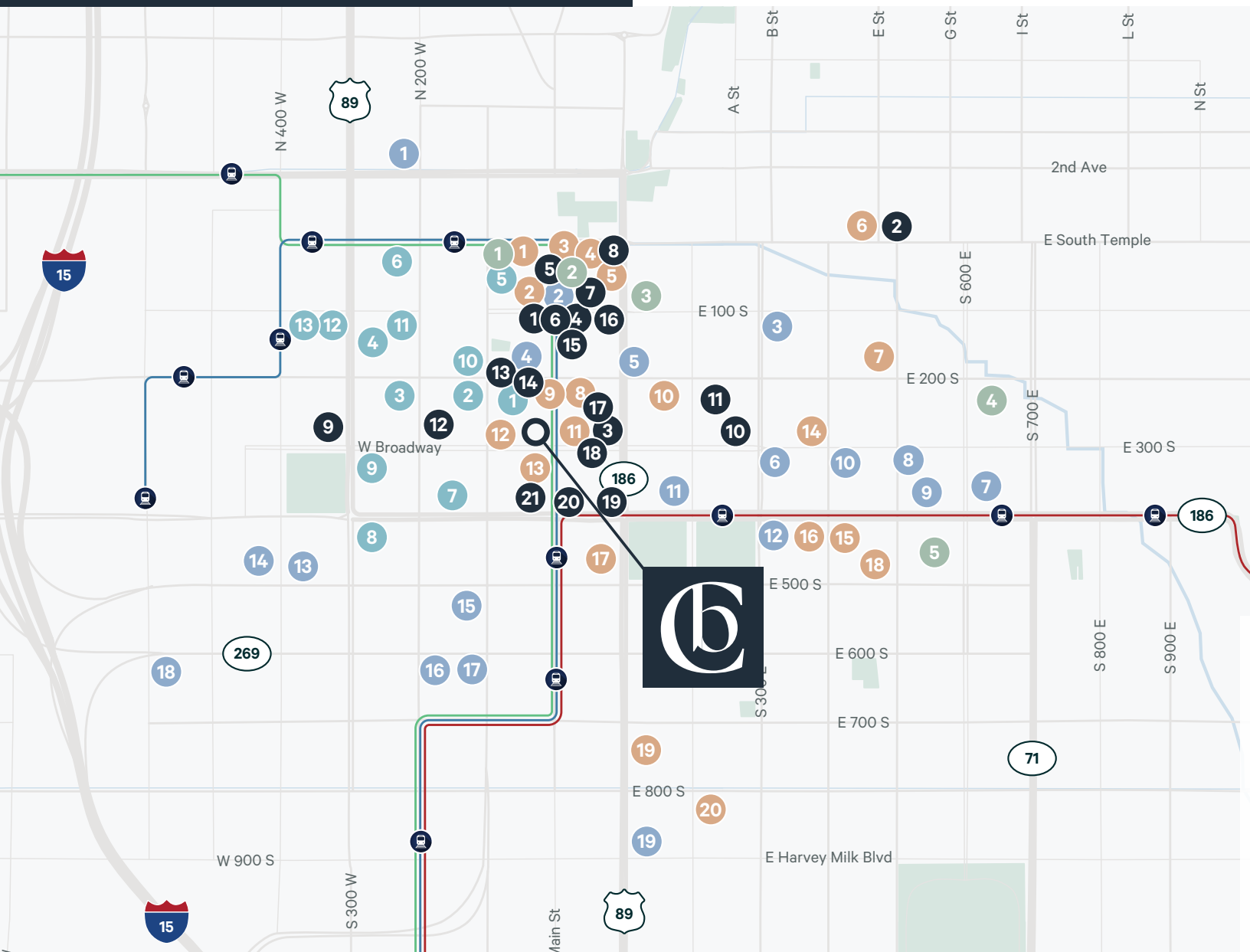
BANKS & FINANCIAL SERVICES

- 1. Key Bank
- 2. Zions Bank
- 3. Zions Bank
- 4. America First Credit Union
- 5. Merrill Lynch Wealth Management
- 6. Zions Bank
- 7. US Bank
- 8. Chase Bank
- 9. UMB Commercial Banking Center
- 10. BMO Bank
- 11. Wells Fargo Bank
- 12. Bank of America
- 13. Zions Bank
- 14. Wells Fargo Bank
- 15. Key Bank
- 16. Chase Bank
- 17. Zions Bank
- 18. America First Credit Union
- 19. Mountain America Credit Union
- 20. American United Federal Credit Union

ADDITIONAL SERVICES

- 1. Maverick
- 2. FedEx
- 3. Sinclair Oil
- 4. The UPS Store
- 5. Maverick
- 6. YWCA
- 7. BODY20
- 8. Maverick
- 9. FedEx
- 10. FedEx
- 11. Planet Fitness
- 12. BODYBAR Pilates
- 13. USPS
- 14. Maverick
- 15. Chevron
- 16. Maverick
- 17. Sinclair Oil
- 18. CrossFit
- 19. Chevron

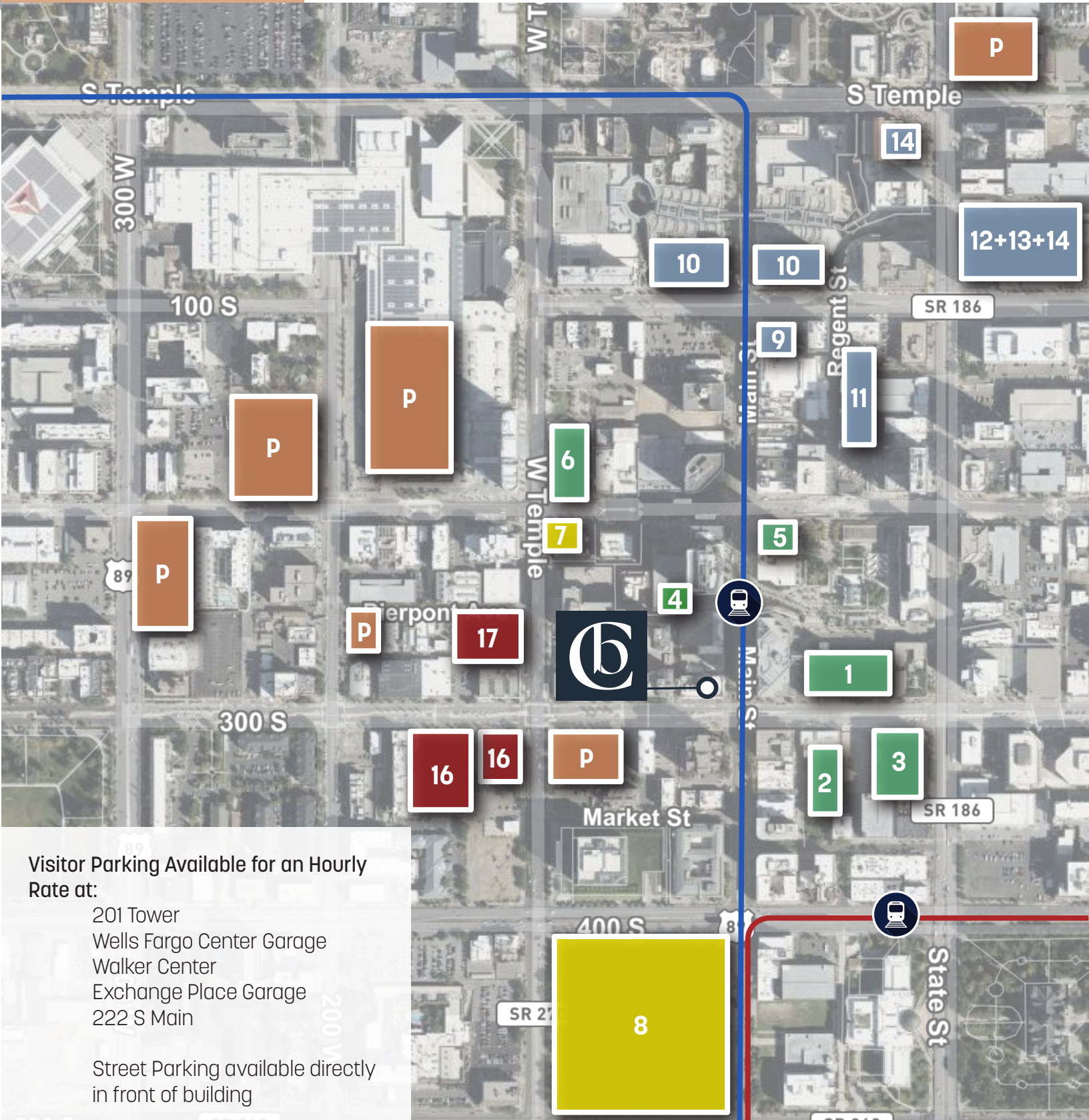
AMENITY & TRANSIT MAP



AREA PARKING

- P1. Wells Fargo Center Garage | 49 E Broadway
- P2. Exchange Place Garage | 45 E Broadway
- P3. 324 South State Street Garage
- P4. 222 S Main Street Garage
- P5. One Utah Center Parking | 201 S Main St Garage
- P6. 175 South West Temple Garage
- P7. AP1 Lofts | 77 W 200 S
- P8. US Bank Tower Garage | 170 South Main
- P9. 5th & Main Street South Surface Lot
- P10. City Creek Center East Garage

- P11. Regent Street Garage | 119 South Regent Street
- P12. Eagle Gate Garage | 145 Social Hall Avenue
- P13. Social Hall Plaza Garage | 71 South 200 East
- P14. 95 State Street Garage
- P15. World Trade Center Utah Garage | 60 E S Temple
- P16. Capitol Parking Lots 1 & 2 | S Side 300 S W Temple
- P17. Capitol Parking Lot 4 | N Side 300 S W Temple



Visitor Parking Available for an Hourly Rate at:

- 201 Tower
- Wells Fargo Center Garage
- Walker Center
- Exchange Place Garage
- 222 S Main

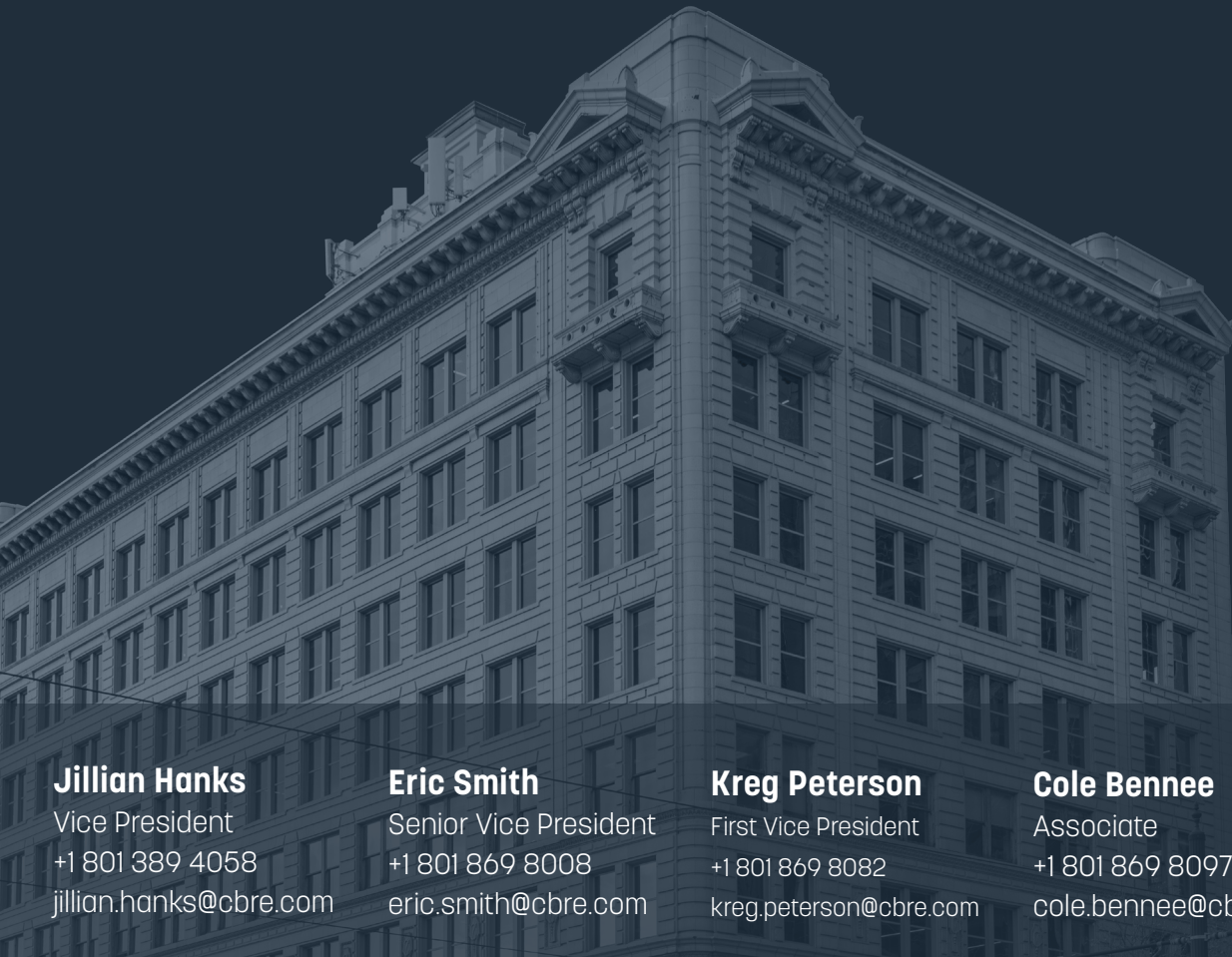
Street Parking available directly in front of building



Clift Building



View the Clift
Story Here



Jillian Hanks

Vice President

+1 801 389 4058

jillian.hanks@cbre.com

Eric Smith

Senior Vice President

+1 801 869 8008

eric.smith@cbre.com

Kreg Peterson

First Vice President

+1 801 869 8082

kreg.peterson@cbre.com

Cole Bennee

Associate

+1 801 869 8097

cole.bennee@cbre.com

@ 2025 CBRE, Inc. All rights reserved. This information has been obtained from sources believed reliable, but has not been verified for accuracy or completeness. You should conduct a careful, independent investigation of the property and verify all information. Any reliance on this information is solely at your own risk. CBRE and the CBRE logo are service marks of CBRE, Inc. All other marks displayed on this document are the property of their respective owners, and the use of such logos does not imply any affiliation with or endorsement of CBRE. Photos herein are the property of their respective owners. Use of these images without the express written consent of the owner is prohibited.

Another great property by:



Newport National Corporation
Real Estate Development
Asset & Property Management

CBRE