

Strayer
Teays Valley
135 Corporate Center Drive
3rd Floor, Suite 531
Scott Depot, WV 25560

- Built in 1999
- Building Height: 5 stories
- SF: 4,569
- Premium office space
- Interstate visibility
- Surface parking: No cost



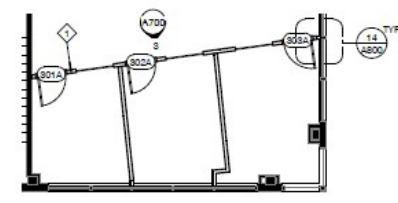
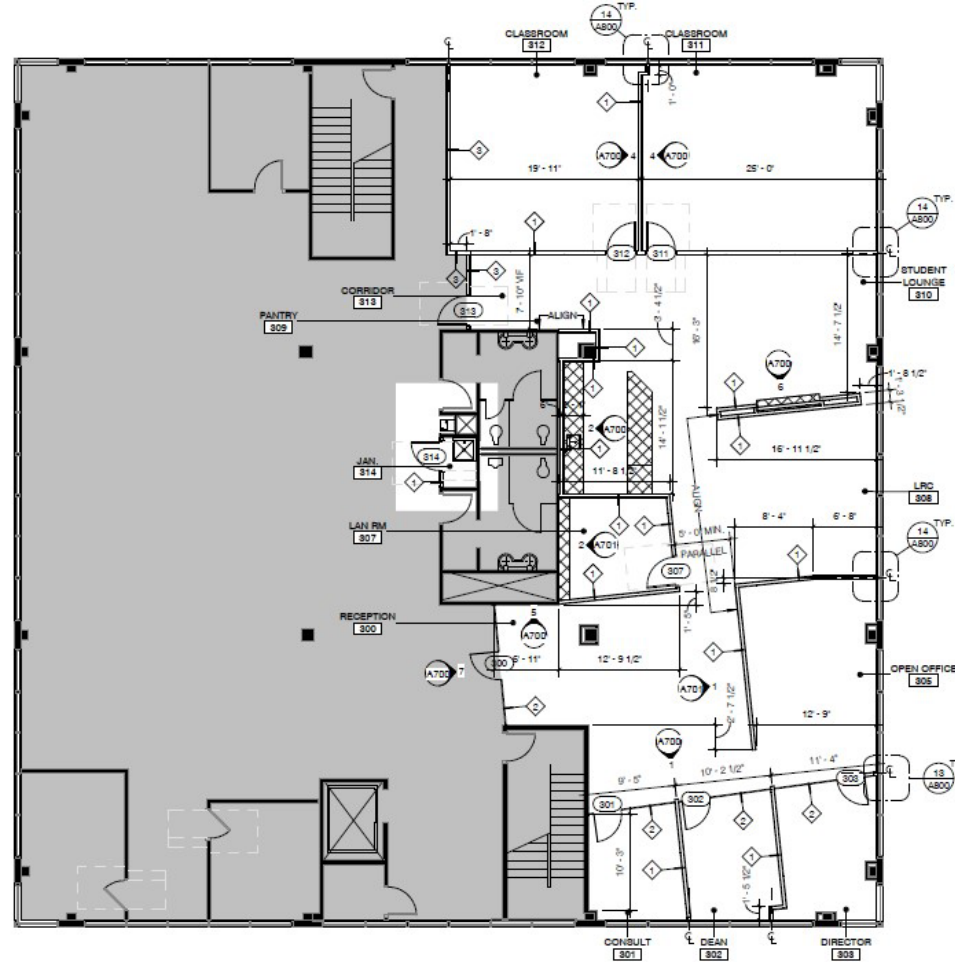
OFFICE PHOTOS



OFFICE PHOTOS (WAITING AREA AND EXTRA SEATING)

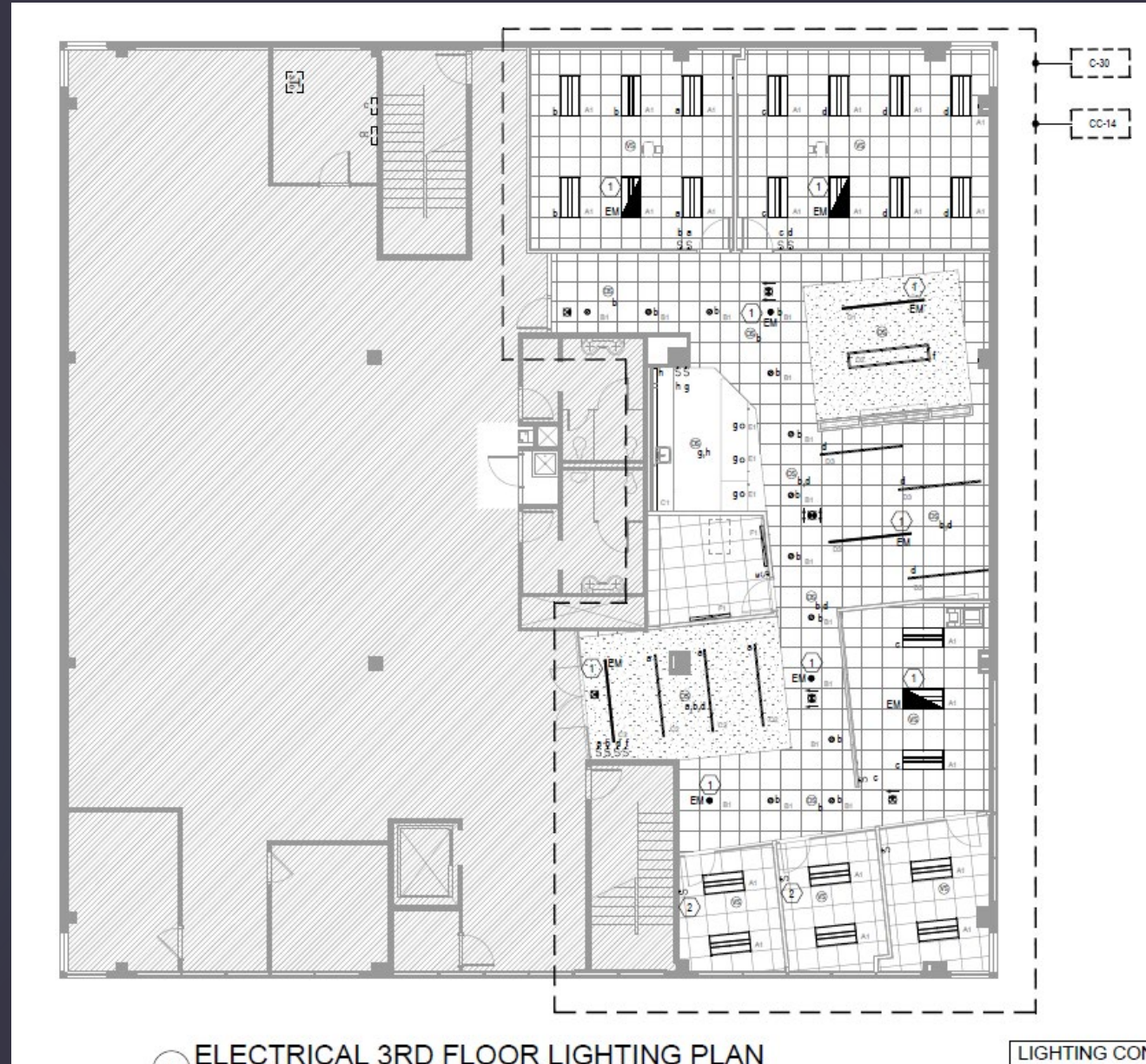


FLOORPLANS



2 PLAN - OFFICE ALTERNATES
1/8" = 1'-0"

FLOORPLANS



FLOORPLANS



1 ELECTRICAL 3RD FLOOR POWER PLAN
3/16" = 1'-0"

SUBLEASE

Questions?
Please contact:



DeWitt Blundon
Associate Broker
304 546 2581
Dewitt.Blundon@cbre.com



David Durbin
Broker
304 720 8497
707 Virginia Street E Suite 1420
Charleston, WV 25301