



AVAILABLE

OFFICE

**HIP, HISTORIC OFFICE SPACE
WITH PERKS**

56 E BROADWAY, SALT LAKE
CITY, UT 84111

DAN RIP
dan@acresutah.com
801.554.9664

ALIGN
COMPLETE REAL ESTATE SERVICES

56 E BROADWAY, SALT LAKE CITY, UT 84111

THE OFFERING

Upper floors of open, character-rich space in one of Salt Lake City's most beloved historic buildings – now available for lease. Ideal for startups, creatives, and professionals who want a serious downtown address without the serious overhead. Situated just east of the TRAX line at 56 E. 300 S., this space puts you at the center of it all – with the flexibility and amenities to match. As a tenant, you'll enjoy access to Work Hive's perks, including a fully equipped kitchen, fitness center, and a rooftop patio with sweeping city views. Paid parking is available.

PROPERTY ADDRESS

56 E Broadway, Salt Lake City, UT 84111

SQUARE FEET

14,000 SF

FLOOR THREE

6,000 Rentable Square Feet

FLOOR FIVE

6,000 Rentable Square Feet

FLOOR SIX

5,000 Rentable Square feet

BUILDING AMENITIES

access to the rooftop, gym, a kitchen, and event areas

LEASE RATE

Introductory lease rate starts at \$9.00 per s.f. modified gross



Viirtually Staged

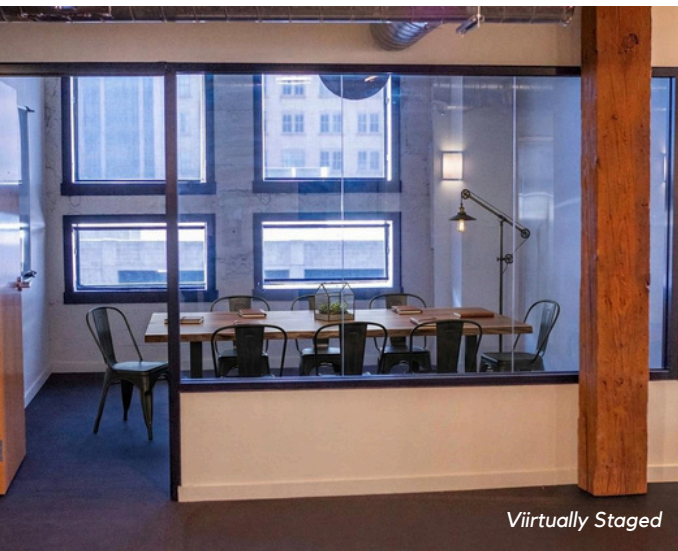


Viirtually Staged

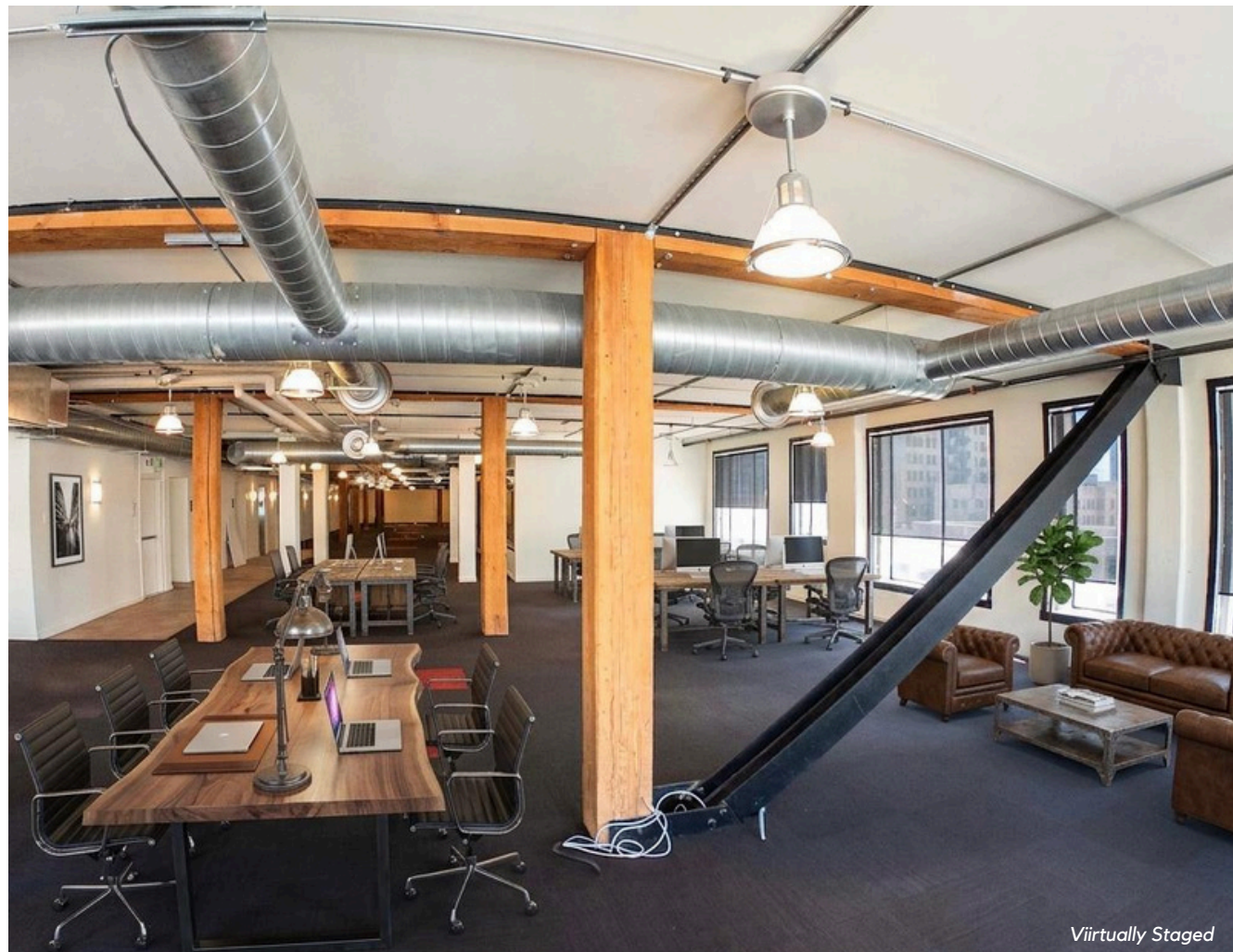
THE OFFERING



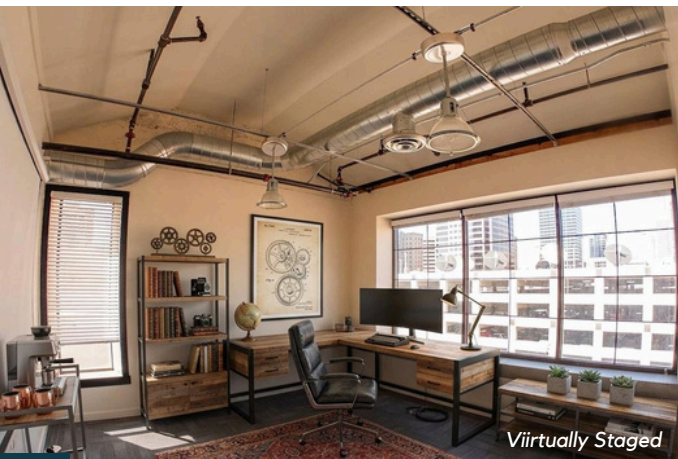
PROPERTY PHOTOS



Viirtually Staged

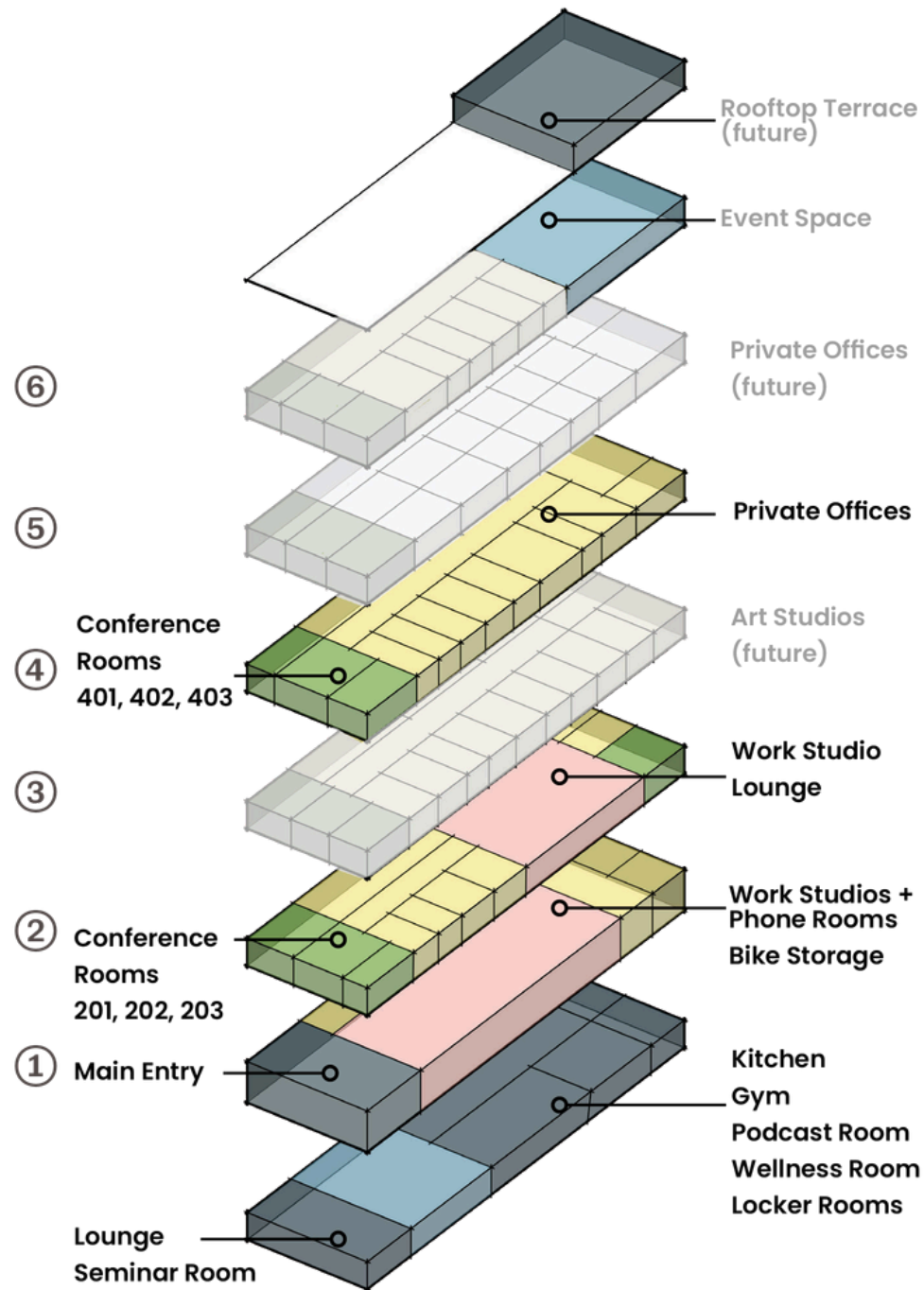


Viirtually Staged



Viirtually Staged

WORK HIVE HQ



NEARBY AMENITIES

RUTH'S CHRIS STEAK HOUSE

SPTIZ

COPPER ONION

SITE

RICHARD'S BURGERS

ZIONS BANK

SANTO TACO

56 E BROADWAY, SALT LAKE CITY, UT 84111



CONTACT

DAN RIP
dan@acresutah.com
801.554.9664

ALIGN

COMPLETE REAL ESTATE SERVICES

1075 EAST HOLLYWOOD AVENUE
SALT LAKE CITY, UT. 84105