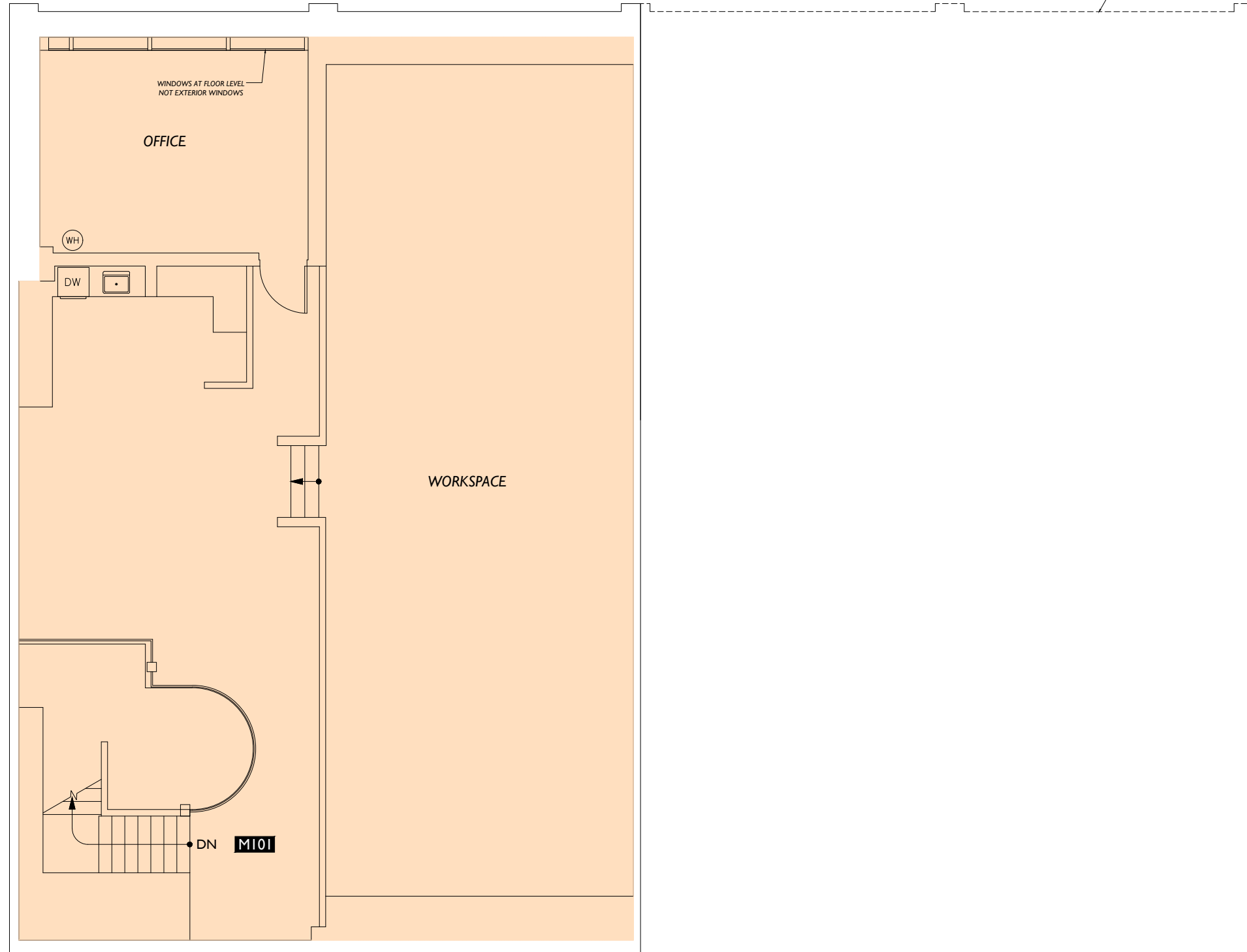


East Pine Street

THIRD FLOOR EXTERIOR



Parking

11th Avenue

Floor Summary	SQ. FT.
Total Rentable Area	2,550.02
Total Occupant Area	2,239.71
Load Factor	1.138551

Suite #	Occupant Area	Rentable Area
Suite M101	2,239.71	2,550.02

Floor Service Area	0.0
Building Service Area	0.0
Total Vertical	0.0

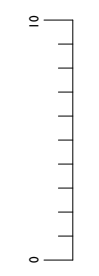
Area Analysis performed in accordance with ANSI/BOMA Z65.1 - 2017 Method A Standard.

Adjacent Building

Lease Plan
MEZZ.
Floor

Office
1535 11th Avenue
Seattle, WA 98122

Misha Averill/Legacy Commercial LLC
400-112th Avenue NE Suite 230
Bellevue, WA 98004



Scale

2DFLOORPLANS.COM
425-677-7511
2-D
AS-BUILT
FLOOR PLANS
600 NW Gilman Blvd. Suite E
Issaquah, WA 98027
Measured: July 2020
Project: C20-627