

Exclusive Class A Industrial Center Ready for Occupancy in Winter Garden



citrus
COMMERCE CENTER

THREE PREMIUM BUILDINGS
12,000 – 80,000 SF

McCRANEY
PROPERTY COMPANY

JLL

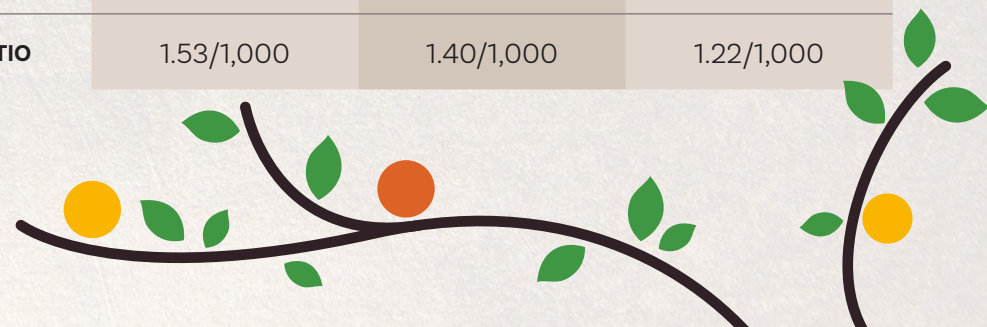
Property Overview

Citrus Commerce Center is a dedicated joint venture development with McCraney Property Company and the Roper Family totaling 187,754 square feet. This modern new build will be one of the most unique Class A Industrial opportunities in the area.

With easy access to State Road 429 and Florida's Turnpike and its prime location near downtown Winter Garden, **Citrus Commerce Center** is surrounded by plentiful workforce opportunities, intermodal transportation and local amenities.

Each building is conveniently divisible, with bay sizes starting at 12,000 square feet, ensuring it is the right fit for any tenant ready to plant roots in Winter Garden.

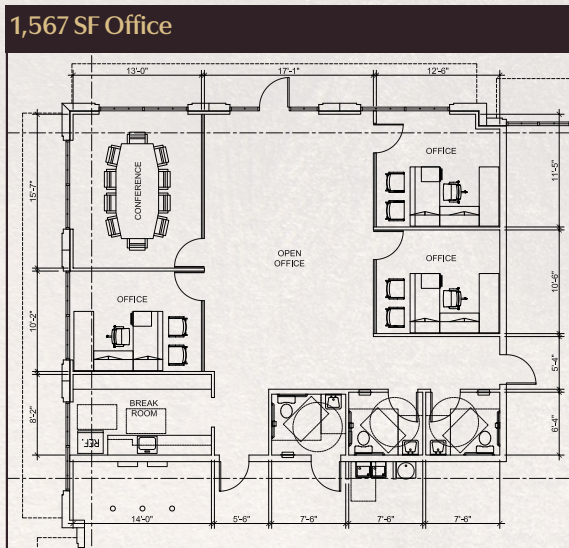
	BUILDING 100	BUILDING 200	BUILDING 300
BUILDING SIZE	36,618 SF	70,240 SF	80,896 SF
DIVISIBLE (2 BAYS)	12,003 SF	13,567 SF	15,600 SF
OFFICE SIZE	1,567 SF	1,188 SF (2)	1,188 SF (2)
CLEAR HEIGHT	24'	24'	32'
DOCK DOORS	18	30	31
DRIVE-IN DOORS	2	4	4
BUILDING DEPTH	120'	130'	150'
COLUMN SPACING	52' x 60' typ	52' x 35' typ	52' x 45' typ
FIRE SUPPRESSION	ESFR	ESFR	ESFR
POWER	800 amps	1,600 amps	1,600 amps
LIGHTING	LED	LED	LED
TRUCK COURT	120'	160' shared	160' shared
PARKING SPACES	56	98	99
PARKING RATIO	1.53/1,000	1.40/1,000	1.22/1,000



Site Plan



Leasing Plan - Building 100

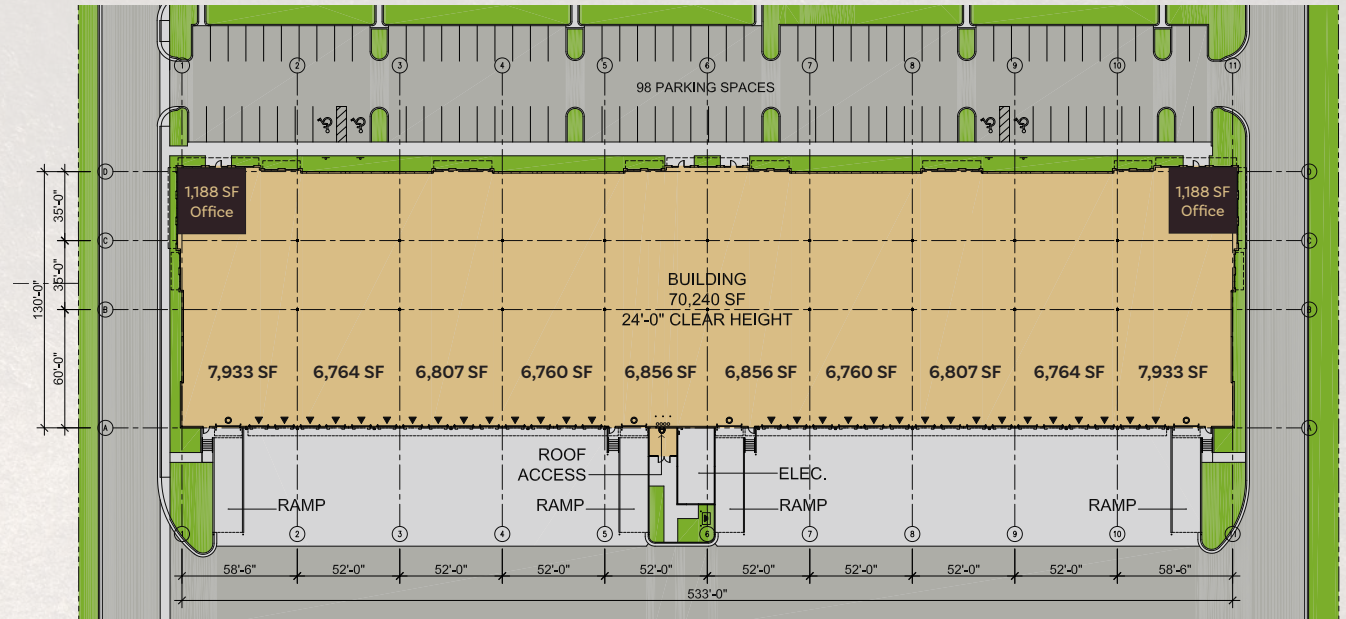
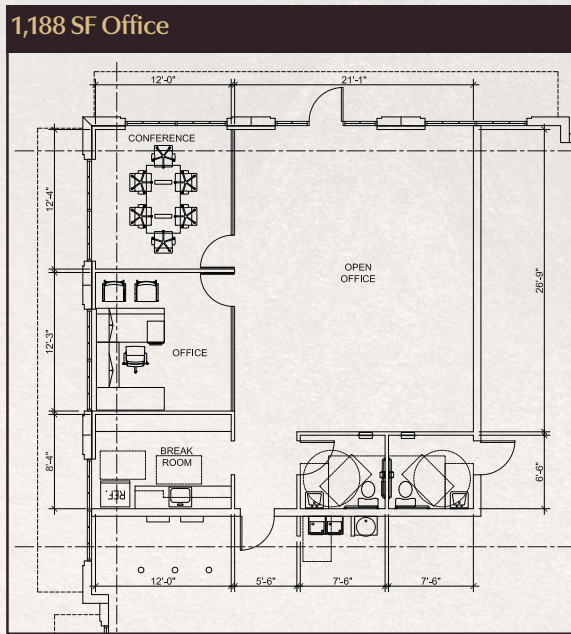


BUILDING SPECS

BUILDING SIZE	36,618 SF	DRIVE-IN DOORS	2	LIGHTING	LED
DIVISIBLE (2 BAYS)	12,003 SF	BUILDING DEPTH	120'	TRUCK COURT	120'
OFFICE	1,567 SF	COLUMN SPACING	52' x 60' typ	PARKING SPACES	56
CLEAR HEIGHT	24'	FIRE SUPPRESSION	ESFR	PARKING RATIO	1.53/1,000
DOCK DOORS	18	POWER	800 amps		



Leasing Plan - Building 200

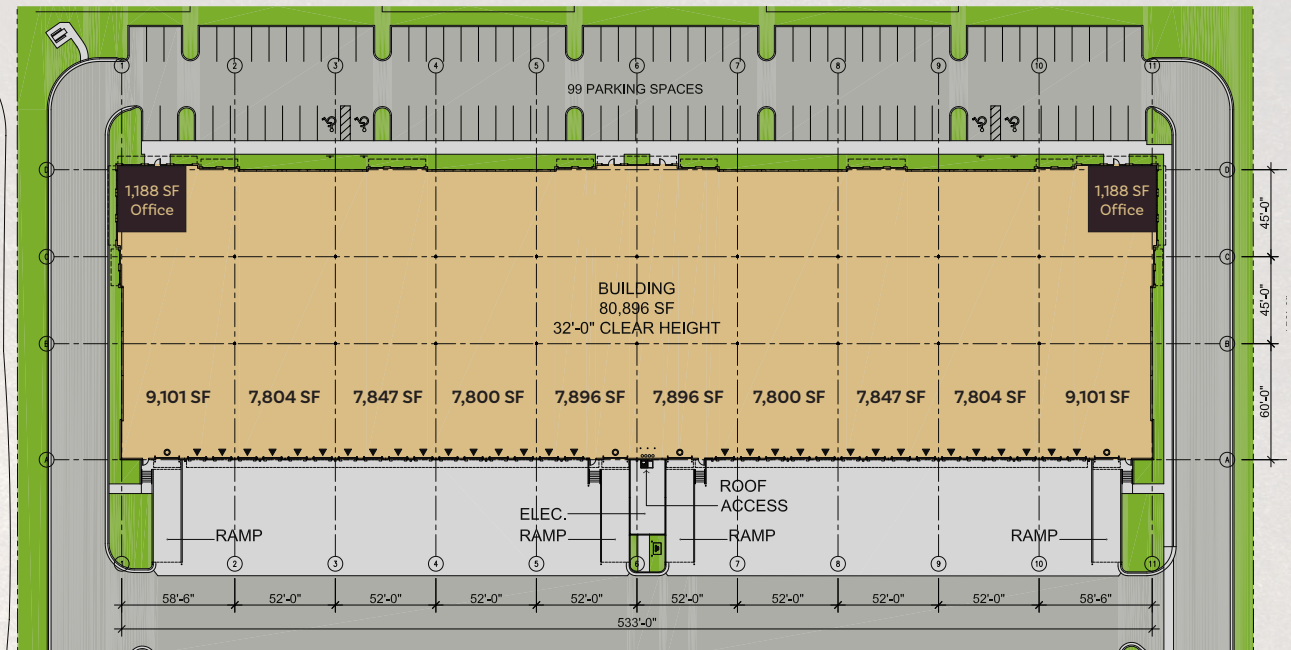
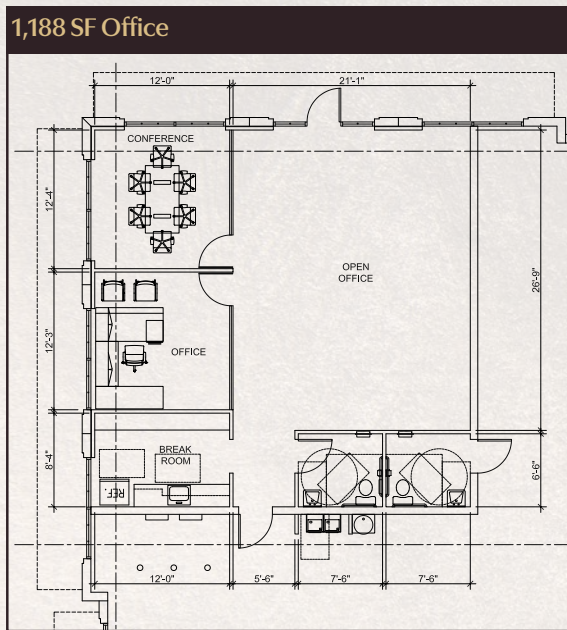


BUILDING SPECS

BUILDING SIZE	70,240 SF	DRIVE-IN DOORS	4	LIGHTING	LED
DIVISIBLE (2 BAYS)	13,567 SF	BUILDING DEPTH	130'	TRUCK COURT	160' shared
OFFICE	1,188 SF (2)	COLUMN SPACING	52' x 35' typ	PARKING SPACES	98
CLEAR HEIGHT	24'	FIRE SUPPRESSION	ESFR	PARKING RATIO	1.40/1,000
DOCK DOORS	30	POWER	1,600 amps		



Leasing Plan - Building 300

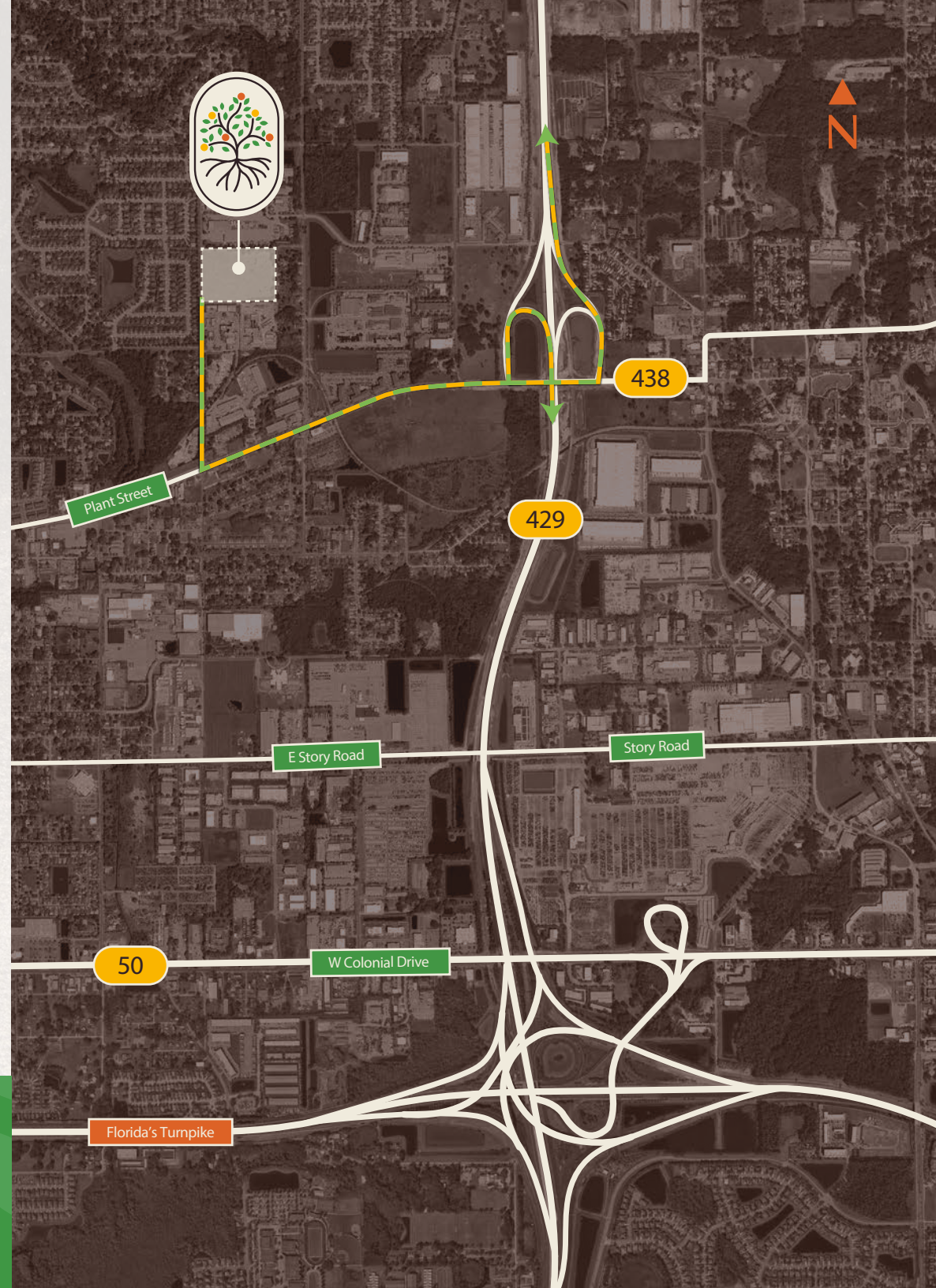


BUILDING SPECS

BUILDING SIZE	80,896 SF	DRIVE-IN DOORS	4	LIGHTING	LED
DIVISIBLE (2 BAYS)	15,600 SF	BUILDING DEPTH	150'	TRUCK COURT	160' shared
OFFICE	1,188 SF (2)	COLUMN SPACING	52' x 45' typ	PARKING SPACES	99
CLEAR HEIGHT	32'	FIRE SUPPRESSION	ESFR	PARKING RATIO	1.22/1,000
DOCK DOORS	31	POWER	1,600 amps		

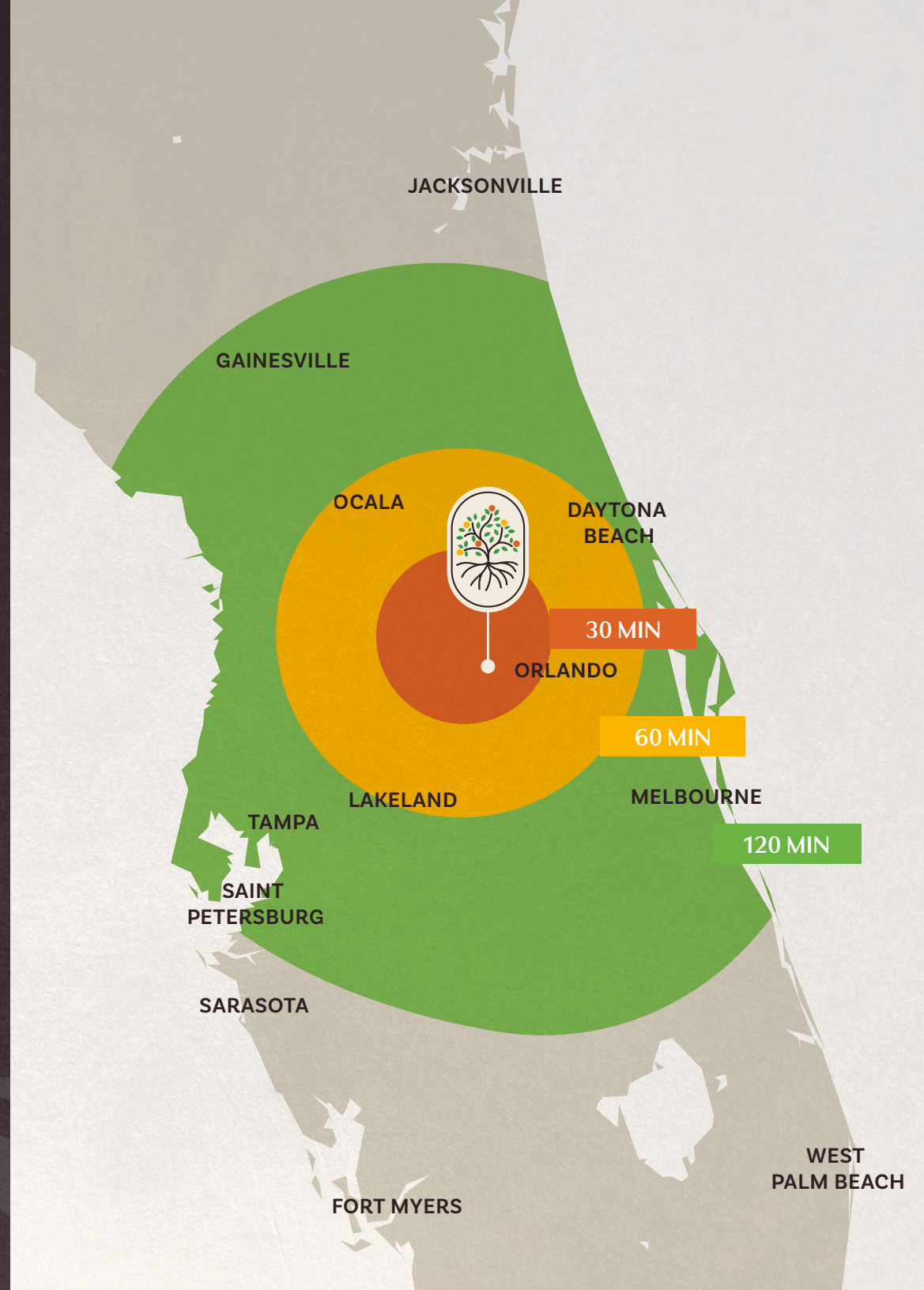


Seamless Access to the Broader Region



Population Overview

	30 MIN	60 MIN	120 MIN
POPULATION	1,544,636	3,875,761	10,344,816
HOUSEHOLDS	581,125	1,468,220	4,167,786
HH INCOME	\$113,585	\$106,512	\$104,657
BUSINESSES	76,010	144,653	390,529
EMPLOYEES	835,792	1,544,407	3,964,918



SR 429
4 MILES

FL TURNPIKE
3 MILES

SR 408
16 MILES

I-4
15 MILES

SR 528
27 MILES

ORLANDO AIRPORT
29 MILES

TAMPA
84 MILES

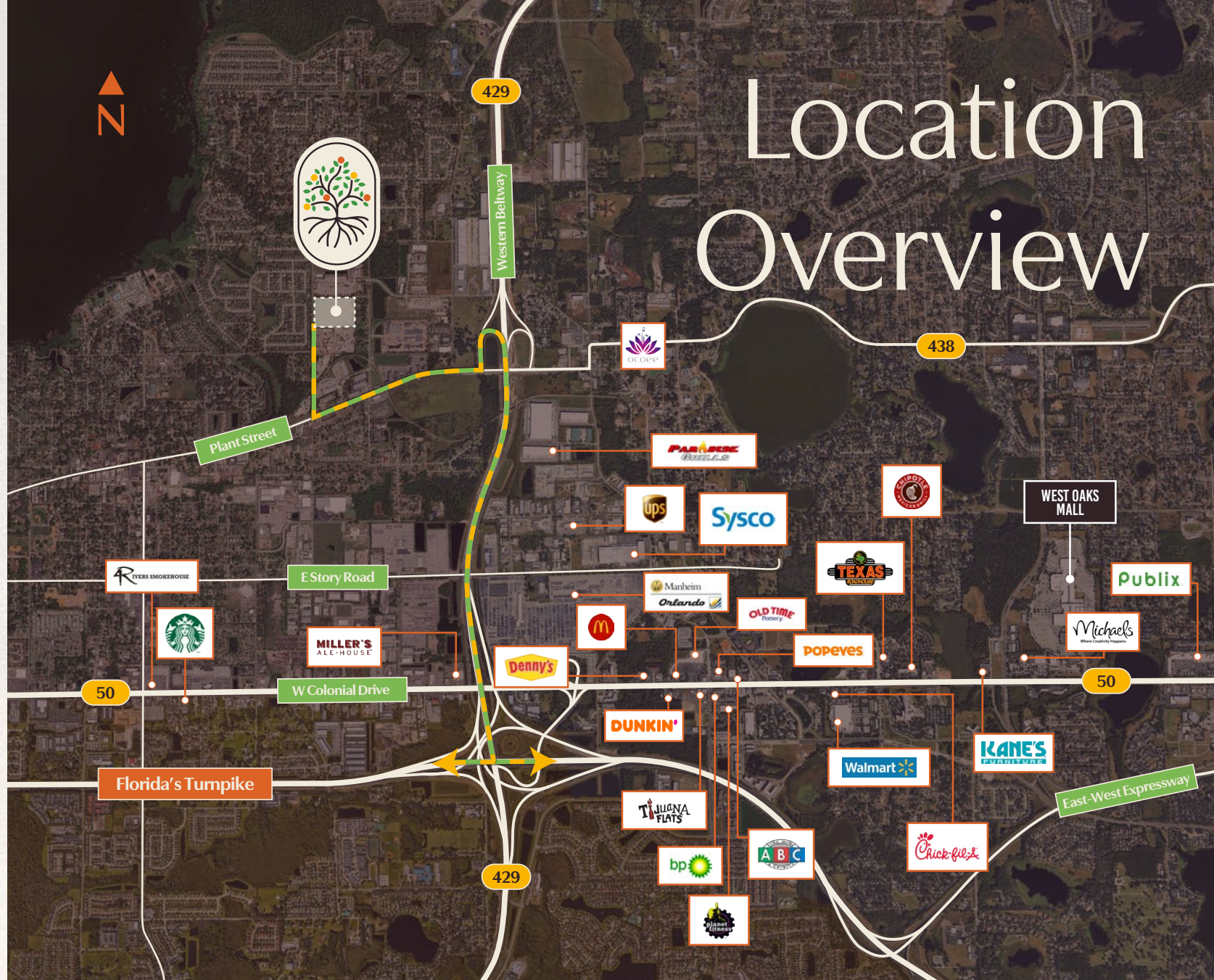
JACKSONVILLE
154 MILES

MIAMI
240 MILES

ATLANTA, GA
427 MILES



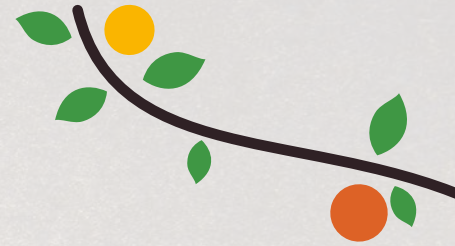
Location Overview



Project Photos

AVAILABLE: 12,000 – 80,000 SF

TAKEN ON 02/09/2026





citrus
COMMERCE CENTER

Bobby Isola, SIOR, CCIM
Executive Managing Director
bobby.isola@jll.com
(407) 930-1804

Kristin Griffin
Senior Vice President
kristin.griffin@jll.com
(407) 739-8285

Matthew Halpin
Associate
matthew.halpin@jll.com
(407) 709-4788



Although information has been obtained from sources deemed reliable, neither Owner nor JLL makes any guarantees, warranties or representations, express or implied, as to the completeness or accuracy as to the information contained herein. Any projections, opinions, assumptions or estimates used are for example only. There may be differences between projected and actual results, and those differences may be material. The Property may be withdrawn without notice. Neither Owner nor JLL accepts any liability for any loss or damage suffered by any party resulting from reliance on this information. If the recipient of this information has signed a confidentiality agreement regarding this matter, this information is subject to the terms of that agreement. ©2026 Jones Lang LaSalle IP, Inc. All rights reserved.