

4104 HOUSTON HWY #500

UNIT FOR LEASE



**SOUTH
TEXAS**
RENTALS.COM



20,800+ DAILY TRAFFIC COUNT



AVAILABLE SPACES

Unit	SQFT	RATE
Suite 500	609 SQFT	15.74 / SF / YR



ABOUT THE PROPERTY

4104 Houston Hwy's premier location, brand-new look, strong tenancy, high foot traffic provide an ideal leasing opportunity in a dense suburban location with excellent demographics. This multi-tenant retail strip center is strategically located in a high traffic area (20,800+ Average Daily Traffic Count), surrounded by many national retail brands including Walmart, Goodwill, and many others..

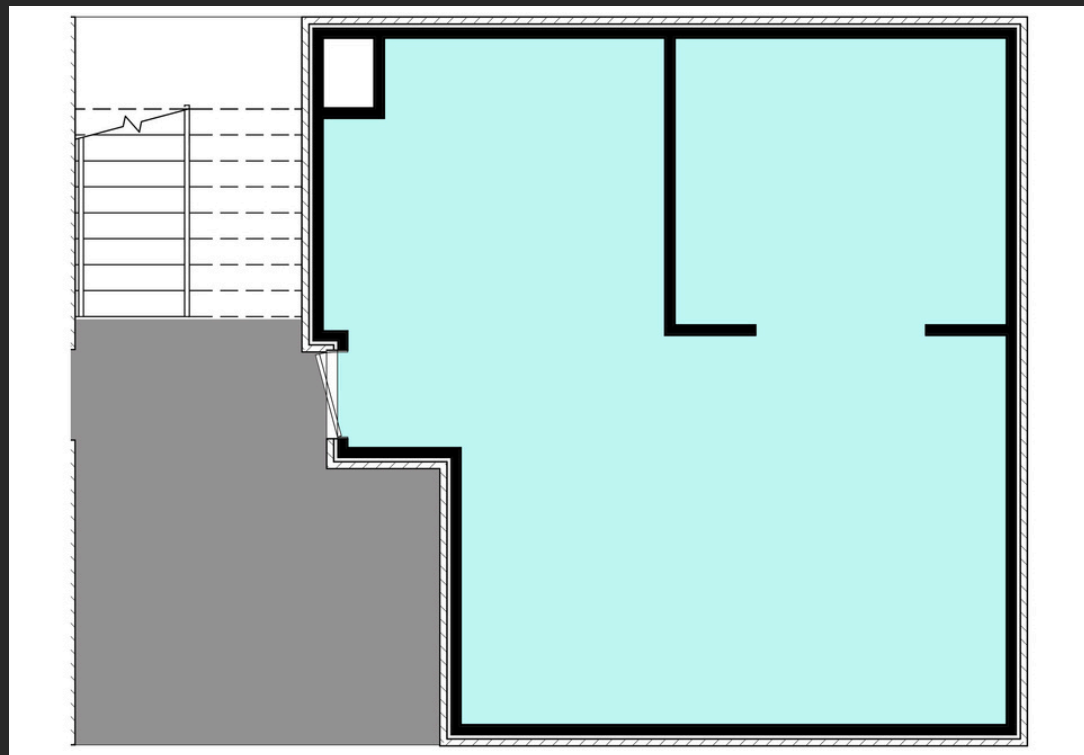
DEMOGRAPHICS

- Traffic Count: 20,819
- Total Population: 92,678 (25 mi)
- Population Projection 2026: 94,047

\$15.74 / SF / YR

Suite 500 | 609 SQFT

This commercial property is located on the busy Houston Highway (Daily Traffic Count of 20,800+). Perfect location for your next business or office, located right off the highly-trafficked Houston Highway. This suite has been fully-remodeled with vinyl flooring and modern fixtures.







SUITE 100
FIRST / SECOND FLOOR
2,252 SQ FT

SUITE 200
FIRST FLOOR
569 SQ FT

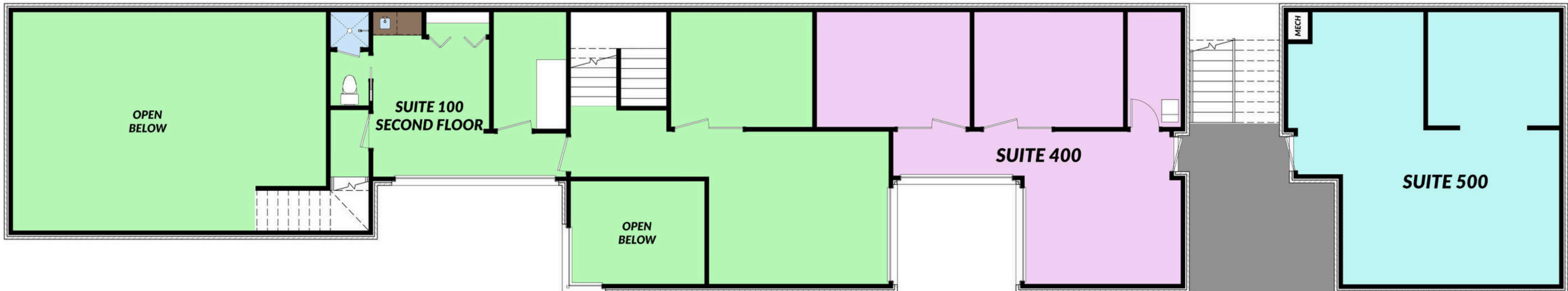
SUITE 300
FIRST FLOOR
609 SQ FT

SUITE 400
SECOND FLOOR
654 SQ FT

SUITE 500
SECOND FLOOR
609 SQ FT

**PUBLIC
ACCESS**

4104 HOUSTON HWY.



CONTACT



**SOUTH
TEXAS**
RENTALS.COM

PHONE

(361) 333-2002

WEBSITE

www.SouthTexasRentals.com

EMAIL

leasing@SouthTexasRentals.com

ADDRESS

4800 N Navarro St, Victoria, TX 77901