

# OFFICE SPACE FOR LEASE

PARK EIGHT

6380 ROGERDALE | HOUSTON



TRANSWESTERN

REAL ESTATE  
SERVICES

6380ROGERDALE.COM



# BUILDING OVERVIEW

- » Two-story, office building totaling 206,362 square feet.
- » 14,135 - 100,510 SF contiguous 2nd floor space available.
- » Abundant windows and natural light throughout.
- » 5.16/1,000 parking ratio covered and uncovered parking available.
- » On-site property management by The RMR Group.
- » Excellent visibility and access from Beltway and Westpark Tollway.
- » Located in the Oak Park at Westchase District, and is central to Houston's western suburban communities.
- » Close to major employment centers with quick access and superior connectivity.

**6380 Rogerdale is part of the upcoming Park Eight mixed-use development. Click [here](#) for more information.**



**Michelle Wogan**  
713.270.3348 | [Michelle.Wogan@transwestern.com](mailto:Michelle.Wogan@transwestern.com)

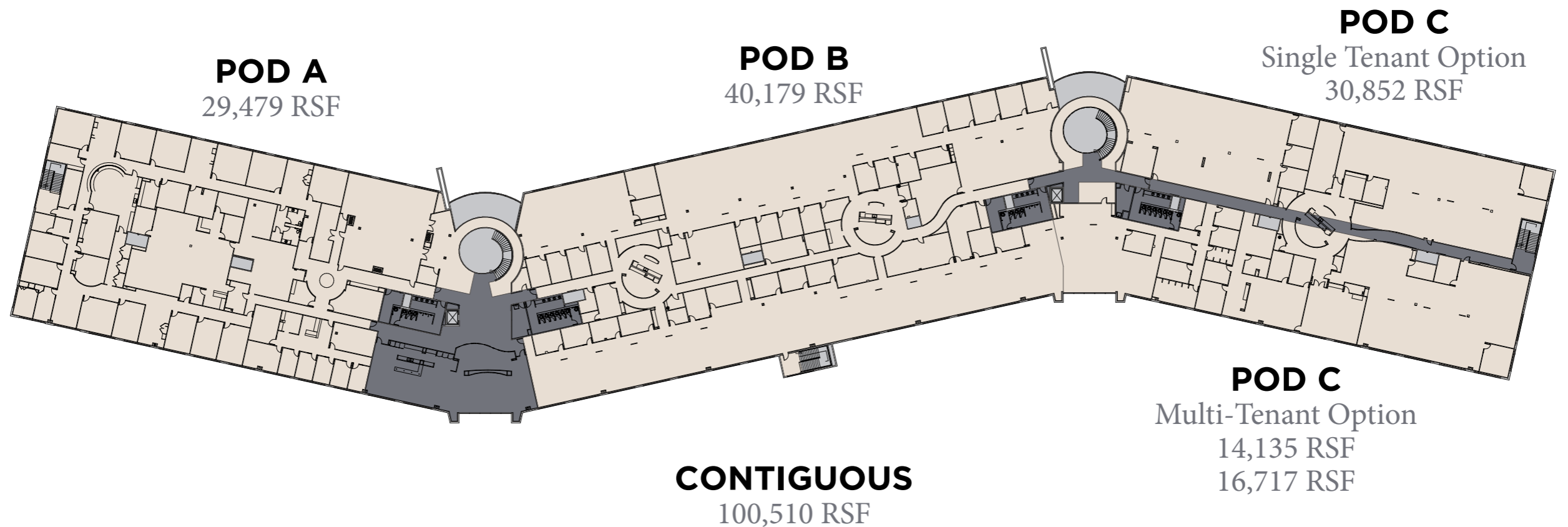
**Monte Calvert**  
713.272.1234 | [Monte.Calvert@transwestern.com](mailto:Monte.Calvert@transwestern.com)

**Paula Musa**  
713.231.1630 | [Paula.Musa@transwestern.com](mailto:Paula.Musa@transwestern.com)



# SPACE AVAILABLE

## 2<sup>ND</sup> FLOOR



Michelle Wogan  
713.270.3348 | [Michelle.Wogan@transwestern.com](mailto:Michelle.Wogan@transwestern.com)

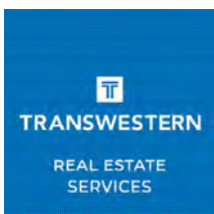
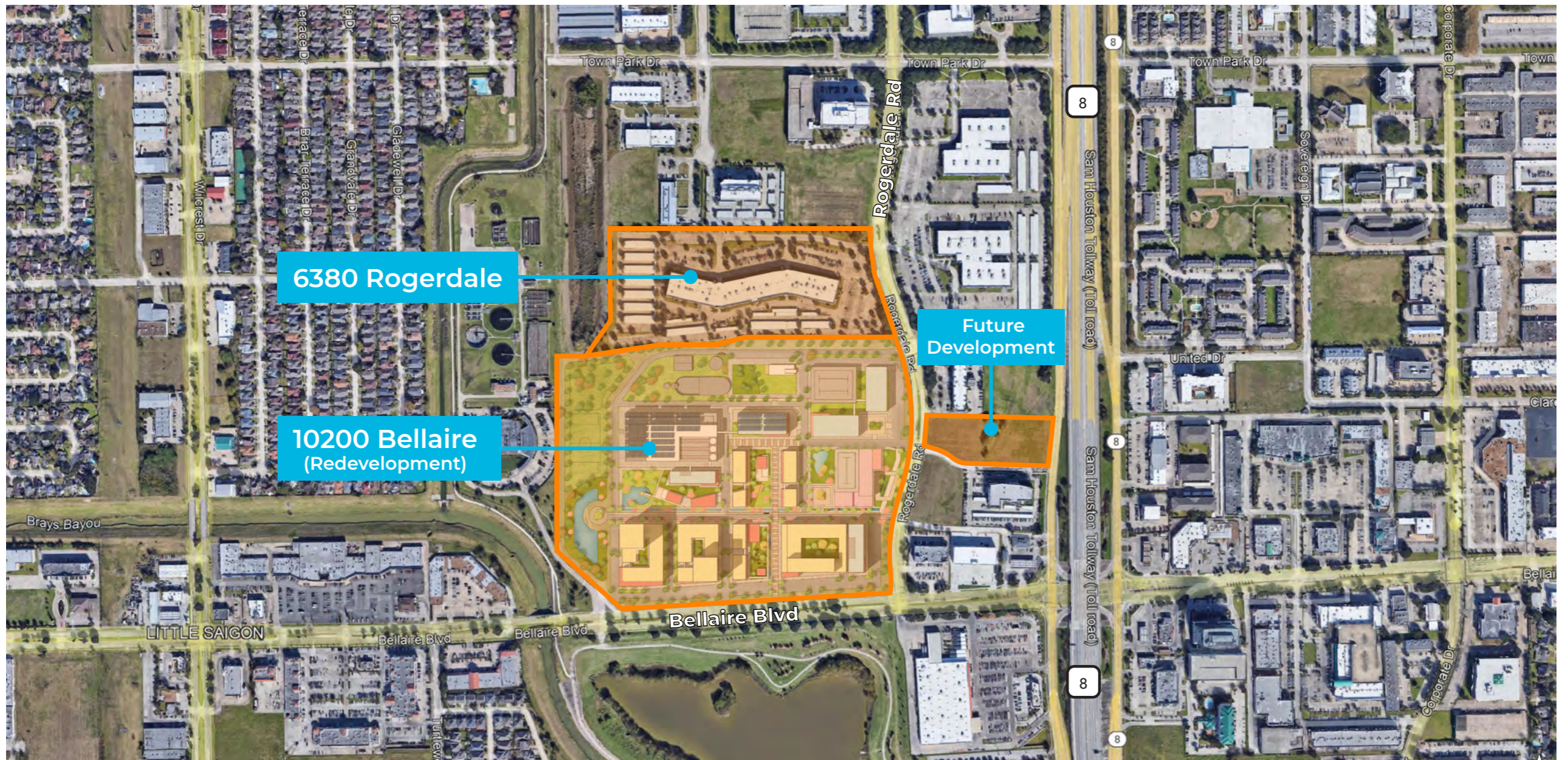
Monte Calvert  
713.272.1234 | [Monte.Calvert@transwestern.com](mailto:Monte.Calvert@transwestern.com)

Paula Musa  
713.231.1630 | [Paula.Musa@transwestern.com](mailto:Paula.Musa@transwestern.com)



# PARK EIGHT DEVELOPMENT

6380 Rogerdale is part of the upcoming Park Eight mixed-use development. [Click here](#) for more information.



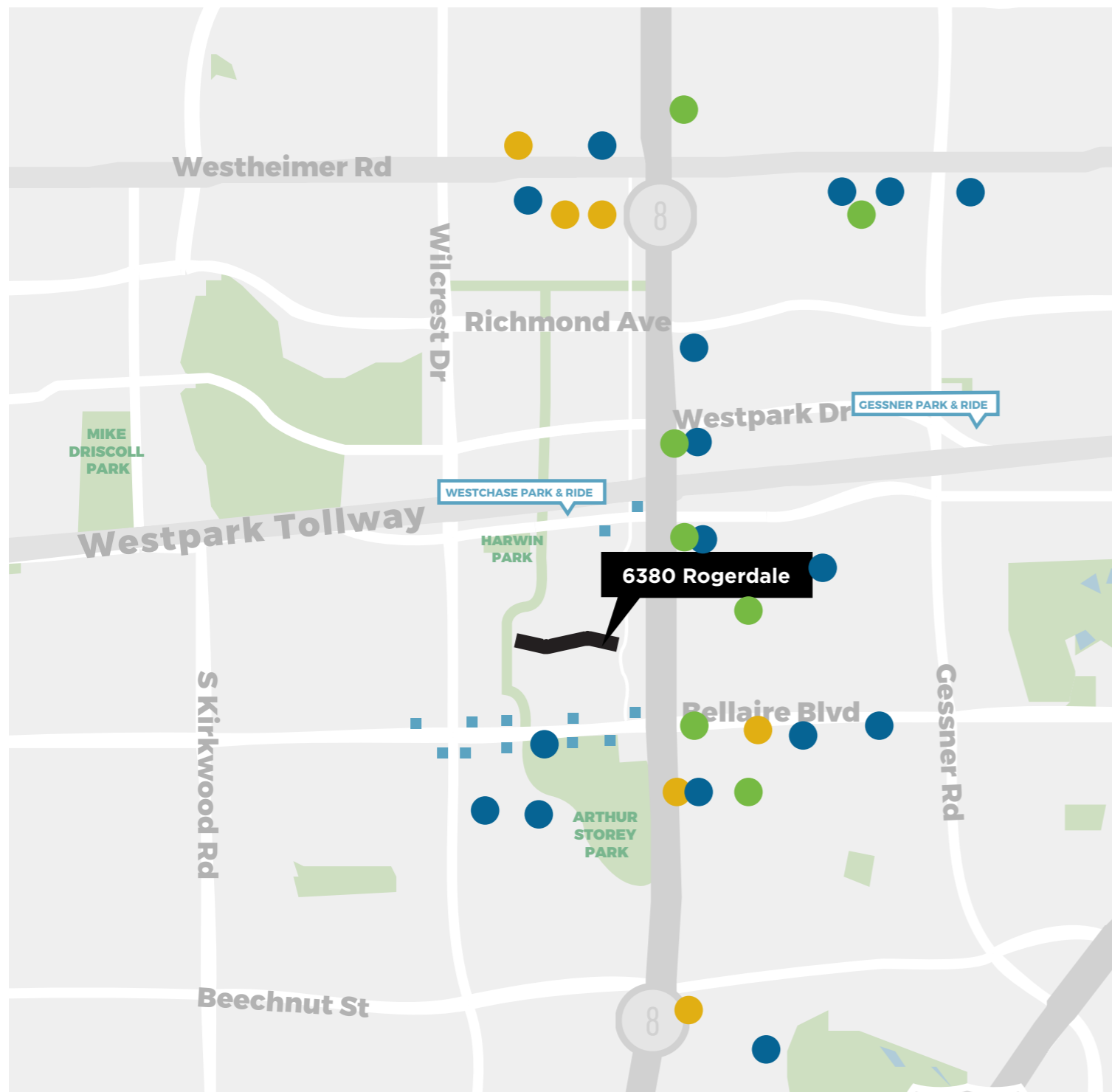
Michelle Wogan  
713.270.3348 | [Michelle.Wogan@transwestern.com](mailto:Michelle.Wogan@transwestern.com)

Monte Calvert  
713.272.1234 | [Monte.Calvert@transwestern.com](mailto:Monte.Calvert@transwestern.com)

Paula Musa  
713.231.1630 | [Paula.Musa@transwestern.com](mailto:Paula.Musa@transwestern.com)



# CONVENIENT LOCATION



## WITHIN 3 MILES:

### Dining:

85° Bakery Café  
 Café 101  
 Chick-Fil-A  
 Denny's  
 Kim Son  
 Tiger Den  
 Golden Dim Sum  
 Banana Leaf  
 Cheddar's  
 Mala Sichuan Bistro  
 Starbucks  
 Tejas Taco House  
 Benihana  
 Chili's  
 Jason's Deli  
 la Madeleine  
 Outback Steakhouse  
 Red Robin  
 Salata  
 Torchy's Tacos  
 Zoe's Kitchen

### Conveniences:

8+ bus stops  
 Westchase Park & Ride

### Hospitality:

Hampton Inn & Suites  
 Hilton Garden Inn  
 Holiday Inn  
 La Quinta Inn & Suites  
 SpringHill Suites  
 Fairfield Inn & Suites  
 Houston Marriott  
 Westchase

### Outdoors & Fitness:

200-acre Arthur Storey Park  
 Brays Bayou  
 Greenway Trail  
 Harwin Park  
 Westchase District Trail  
 Mike Driscoll Park  
 24 Hour Fitness

### Retail:

Target  
 Whole Foods  
 H-E-B  
 H Mart  
 Home Depot



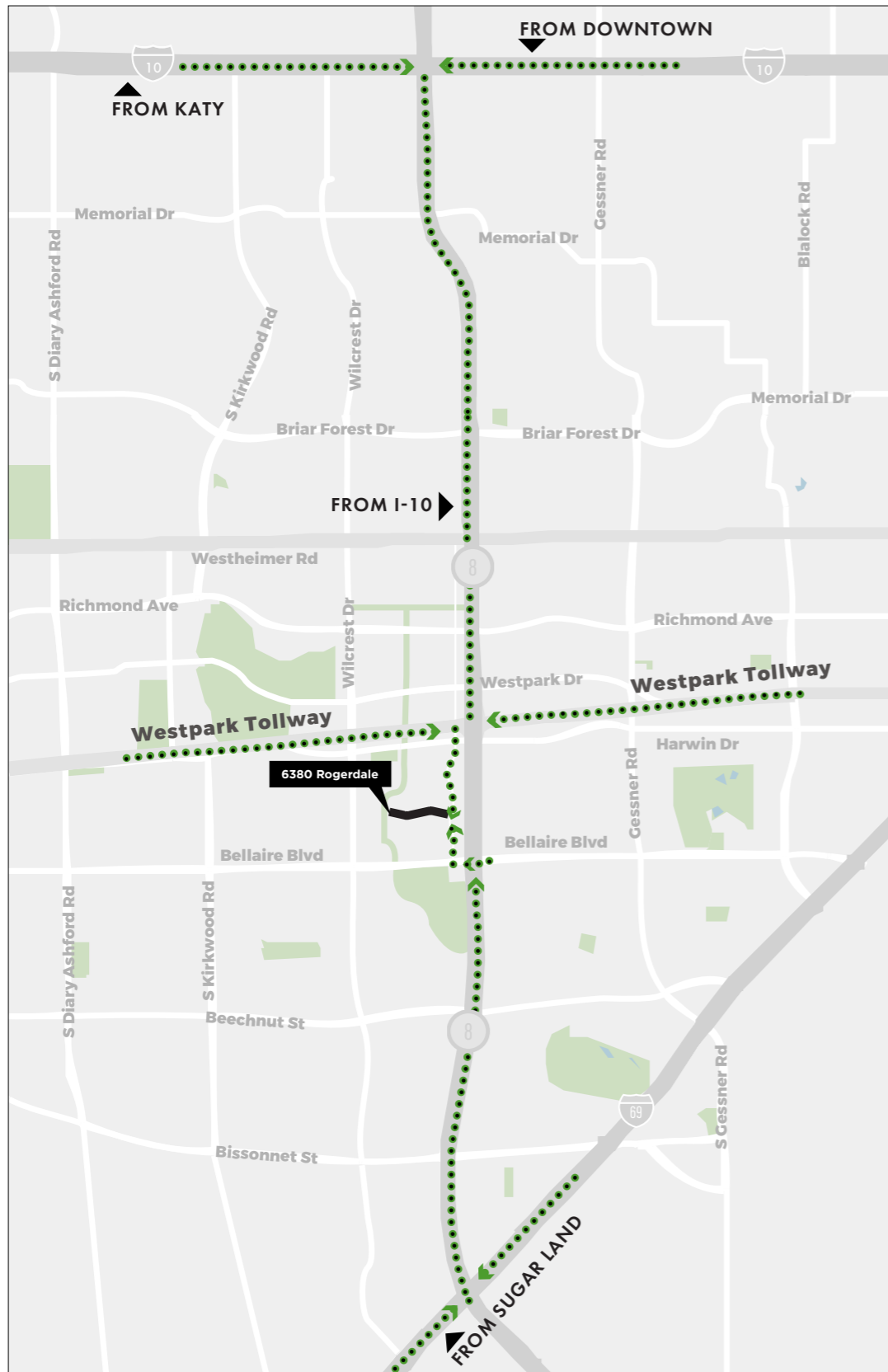
Michelle Wogan  
 713.270.3348 | Michelle.Wogan@transwestern.com

Monte Calvert  
 713.272.1234 | Monte.Calvert@transwestern.com

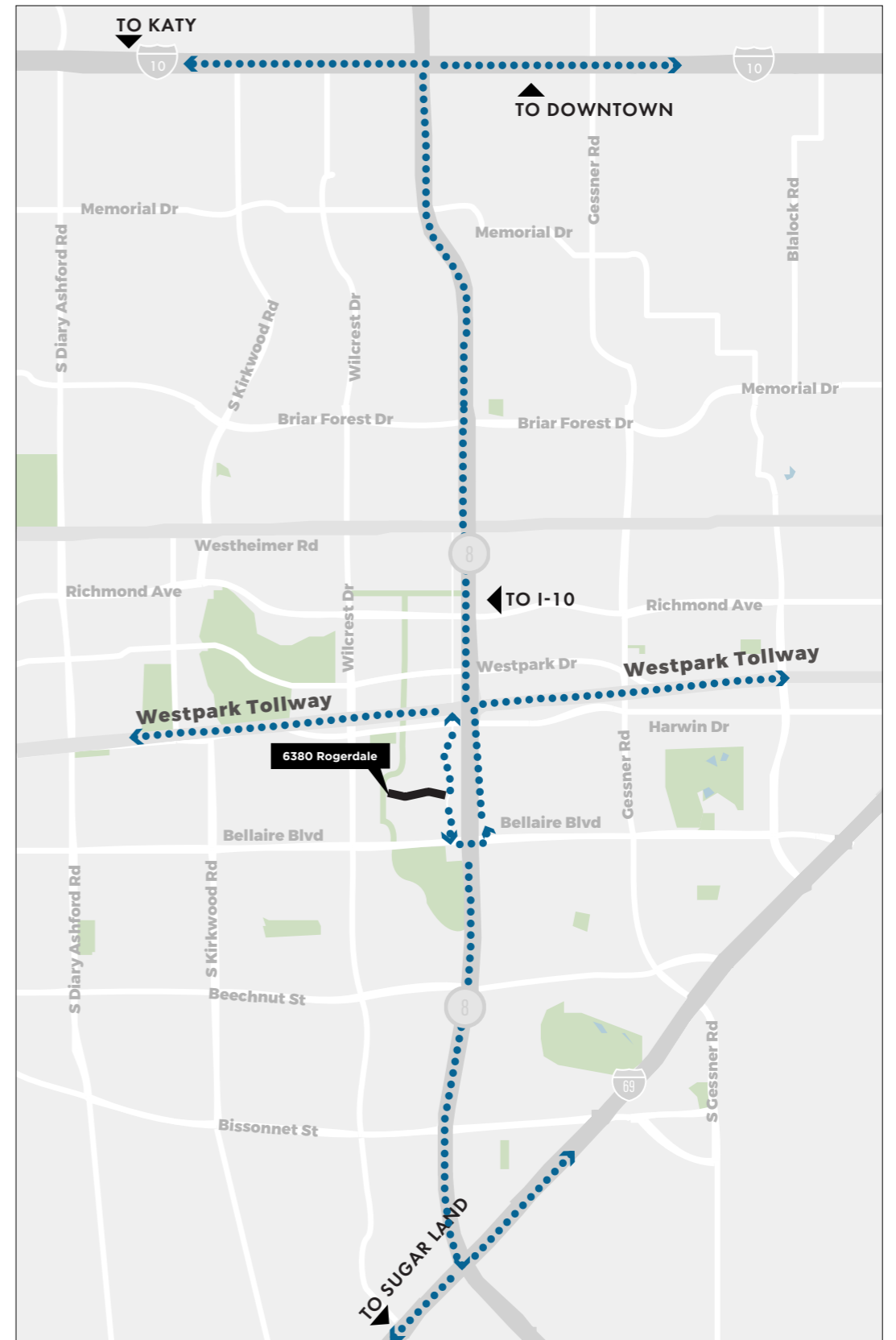
Paula Musa  
 713.231.1630 | Paula.Musa@transwestern.com

# SUPERIOR ACCESS

## INGRESS



## EGRESS





**TAILORED BRANDS**

# 6380 ROGERDALE

[6380ROGERDALE.COM](http://6380ROGERDALE.COM)

FOR LEASING INFORMATION, CONTACT:

**MICHELLE WOGAN**

713.270.3348

[Michelle.Wogan@transwestern.com](mailto:Michelle.Wogan@transwestern.com)

**MONTE CALVERT**

713.272.1234

[Monte.Calvert@transwestern.com](mailto:Monte.Calvert@transwestern.com)

**PAULA MUSA**

713.231.1630

[Paula.Musa@transwestern.com](mailto:Paula.Musa@transwestern.com)



**TRANSWESTERN**

REAL ESTATE  
SERVICES