



3257 Lawrenceville Highway | Lawrenceville, GA 30044

NEW PRICE
\$795,000

5.16± Acres

Approximately 801' Frontage on
Lawrenceville Hwy / US 29 / GA 8

Zoned C-2 (Gwinnett County)

0.8 Miles North of Ronald Reagan Pkwy

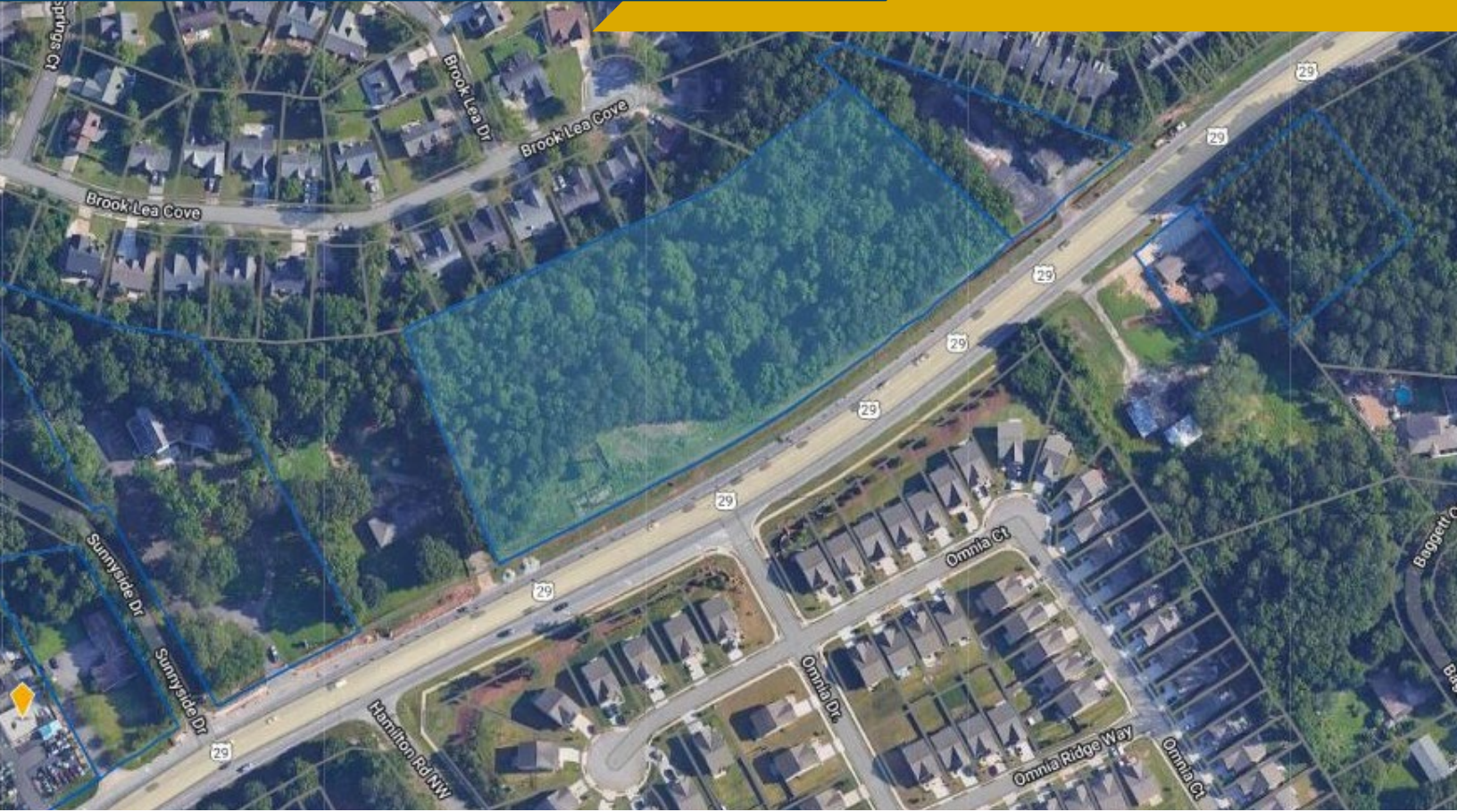
0.5 Miles South of Walmart Neighborhood
Market at Bethesda Church Rd



FOR MORE
INFORMATION
PLEASE CONTACT

ED O'CONNOR, SIOR
770.729.2826
eoconnor@lavista.com

MATT LAHOOD
770.729.2815
mlahood@lavista.com



DEMOGRAPHICS

	1-mile	3-mile	5-mile
Population	12,870	11,604	252,109
Households	3,799	35,863	82,486
Average HH Income	\$87,785	\$85,926	\$95,464

TRAFFIC COUNTS

Bethesda Church Rd	5,424 VPD
Ronald Reagan Pkwy	13,599 VPD
Lawrenceville Hwy/US 29/GA 8	32,426 VPD



FOR MORE
INFORMATION
PLEASE CONTACT

ED O'CONNOR, SIOR
770.729.2826
eoconnor@lavista.com

MATT LAHOOD
770.729.2815
mlahood@lavista.com