



Manufacturing Sublease

Flexible Divisibility

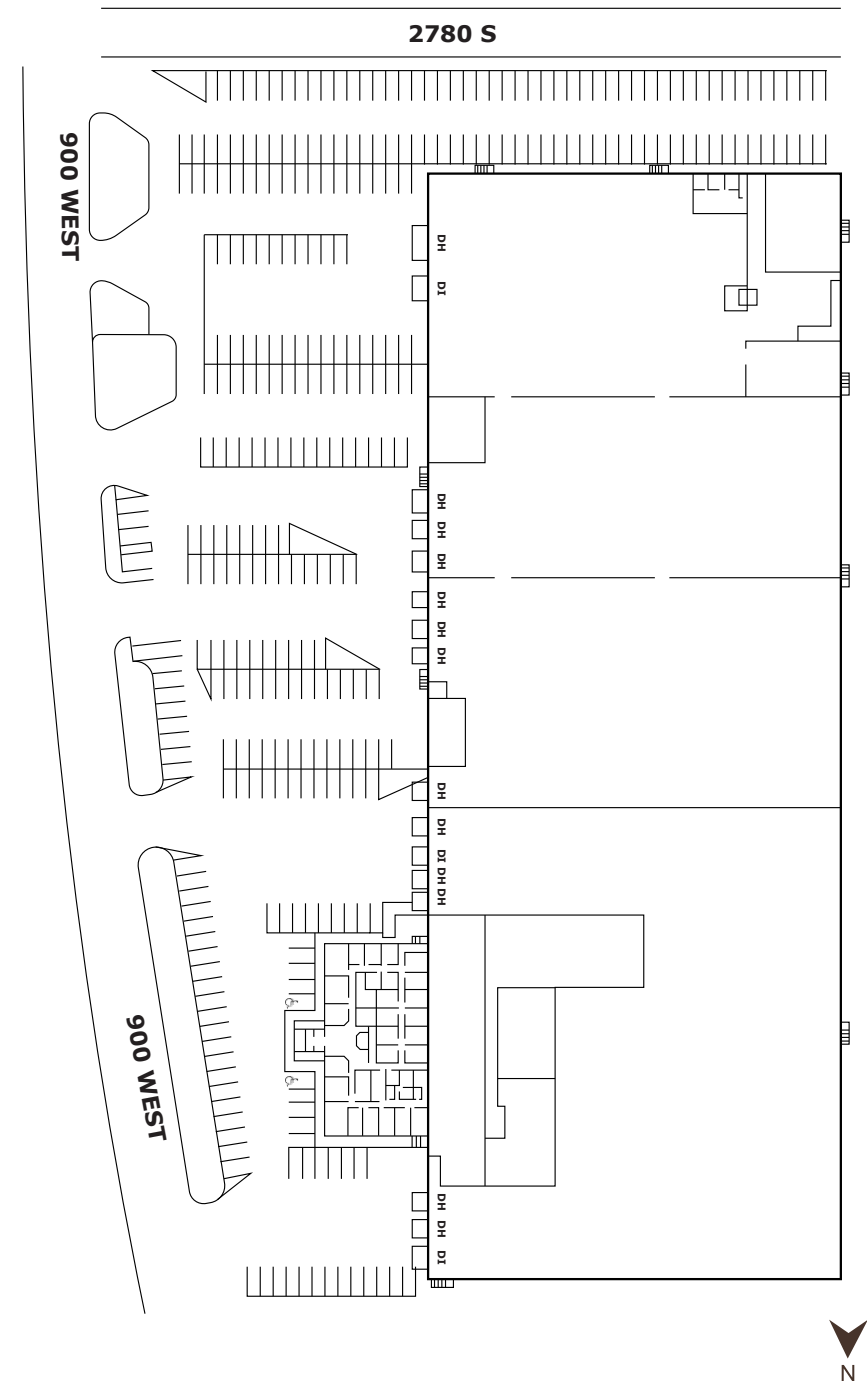
2700 S 900 W Salt Lake City, Utah 84119



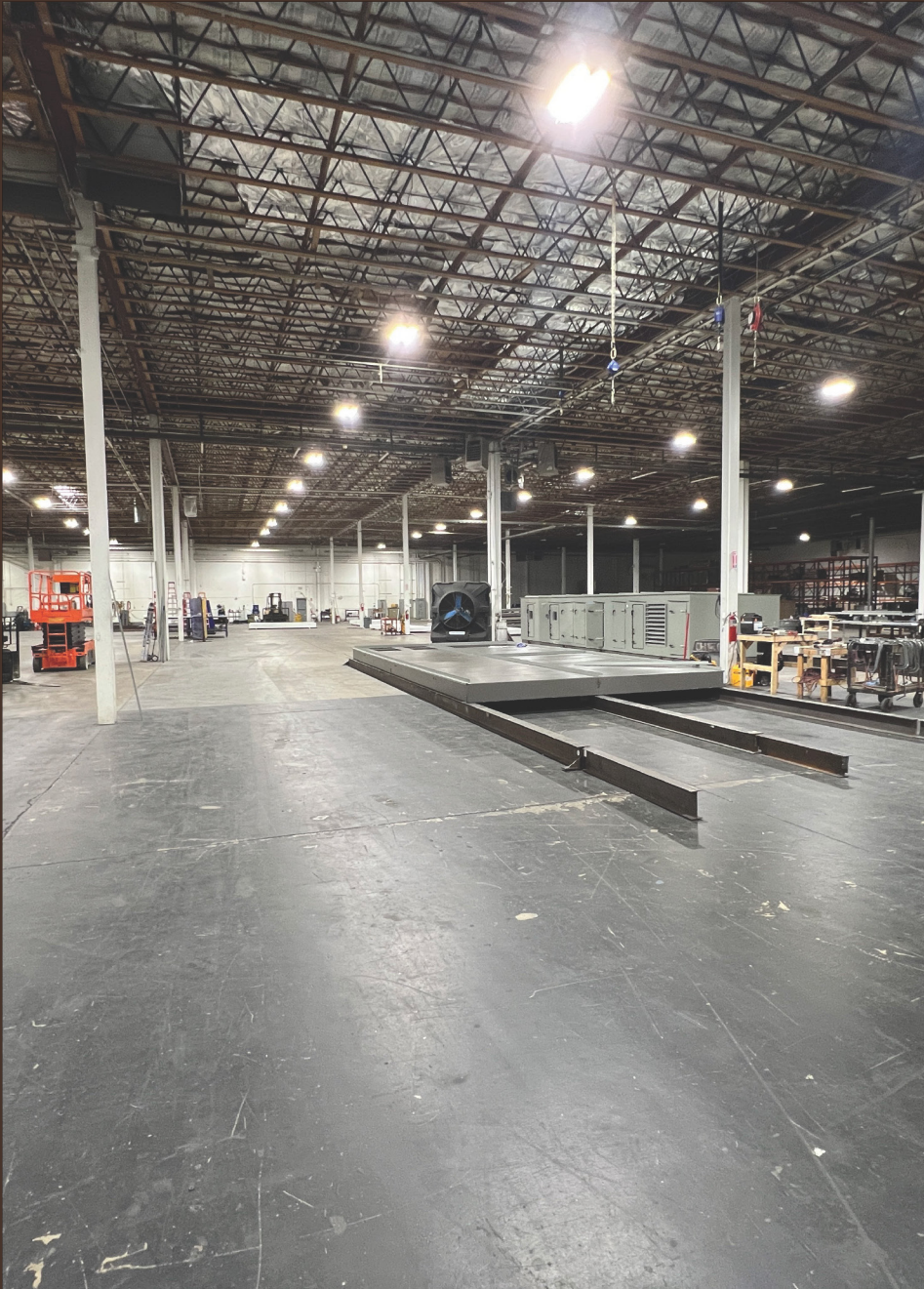
±192,059 SF

PROPERTY FEATURES

- Available: ±192,059 SF
- Potential for up to ±20,000 SF office
- 1,500 SF events/conference room
- 1,100 SF tool room
- Warehouse and office restrooms
- 22' clear height
- 13 (thirteen) DH doors up to 12' x 10'
- 3 (three) drive-in doors up to 16' x 16'
- 2500amp/480v/3-phase (tenants to verify)
- Gas forced heating
- Wet sprinklers
- Compressed air lines throughout the space
- 220 parking spaces (1.10/1,000 SF)
- Trailer parking available



2700 S 900 W Salt Lake City





Drive Times



**SLC International
Airport- 10 mins**



**Downtown Salt
Lake City- 10 mins**



I-215- 6 mins

For more information, please contact:

Wick Udy

+1 801 456 9523
wick.udy@jll.com

Culum J. Mills

+1 801 456 9526
culum.mills@jll.com

Rhett Rasmussen

+1 385 419 3195
rhett.rasmussen@jll.com

Aidan Grace

+1 206 909 0602
aidan.grace@jll.com

Although information has been obtained from sources deemed reliable, JLL does not make any guarantees, warranties or representations, express or implied, as to the completeness or accuracy as to the information contained herein. Any projections, opinions, assumptions or estimates used are for example only. There may be differences between projected and actual results, and those differences may be material. JLL does not accept any liability for any loss or damage suffered by any party resulting from reliance on this information. If the recipient of this information has signed a confidentiality agreement with JLL regarding this matter, this information is subject to the terms of that agreement. ©2025 Jones Lang LaSalle Brokerage, Inc. All rights reserved.

