

WAREHOUSE / OFFICE SPACE



1953 Case Pkwy., South
Twinsburg, OH 44087

Property Features

- Building Size: 24,000 SF
- Warehouse: 22,080 SF
- Office: 1,920 SF
- Land: 2.87 Acres
- Docks: 2 with Levelers
- Drive-Ins: 1 (12'x14')
- Clear Height: Up to 24' Clear
- Sprinklered: Yes
- Power: 480/277, 1600 Amp
- Year Built: 1994, 2001



Joe Hauman, CCIM
+1 440 591 3723
joe.hauman@naipvc.com

Noah Broadbent, CCIM
+1 440 708 8578
noah.broadbent@naipvc.com

Jeffrey Calig, CCIM
+1 216 455 0910
jcalig@naipvc.com

FOR LEASE

Interior Photos



Joe Hauman, CCIM
+1 440 591 3723
joe.hauman@naipvc.com

Noah Broadbent, CCIM
+1 440 708 8578
noah.broadbent@naipvc.com

Jeffrey Calig, CCIM
+1 216 455 0910
jcalig@naipvc.com

FOR LEASE

Floor Plan



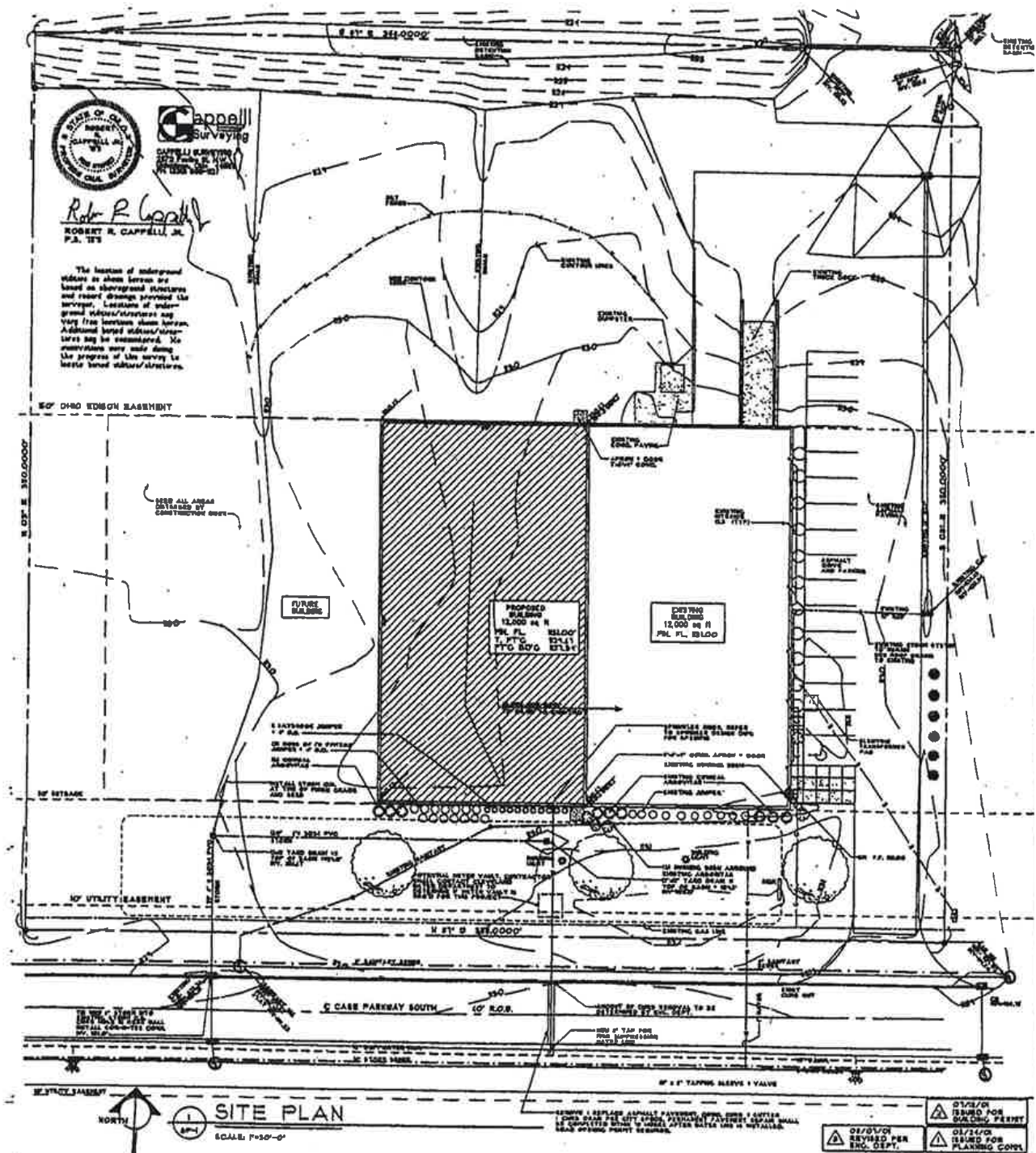
Joe Hauman, CCIM
+1 440 591 3723
joe.hauman@naipvc.com

Noah Broadbent, CCIM
+1 440 708 8578
noah.broadbent@naipvc.com

Jeffrey Calig, CCIM
+1 216 455 0910
jcalig@naipvc.com

FOR LEASE

Floor Plan



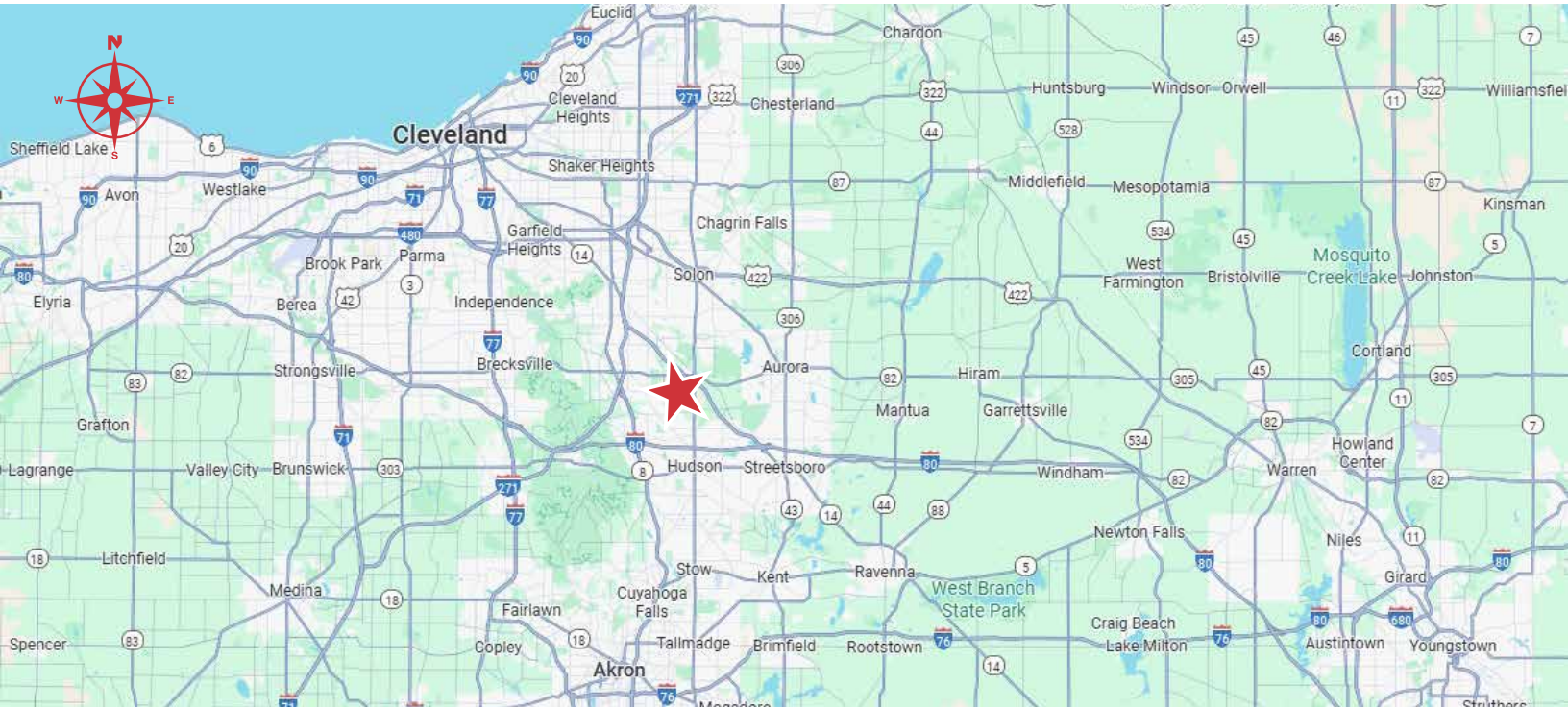
Joe Hauman, CCIM
 +1 440 591 3723
 joe.hauman@naipvc.com

Noah Broadbent, CCIM
 +1 440 708 8578
 noah.broadbent@naipvc.com

Jeffrey Calig, CCIM
 +1 216 455 0910
 jcalig@naipvc.com

FOR LEASE

Property Location



Joe Hauman, CCIM
+1 440 591 3723
joe.hauman@naipvc.com

Noah Broadbent, CCIM
+1 440 708 8578
noah.broadbent@naipvc.com

Jeffrey Calig, CCIM
+1 216 455 0910
jcalig@naipvc.com

BUILDING INFORMATION SHEET

LOCATION: 1953 Case Pkwy., South, Twinsburg, OH

SPACE AVAILABLE: 24,000 SF

WAREHOUSE AREA: 22,080 SF

OFFICE AREA 1,920 SF

CONSTRUCTION Metal Trusses/Steel Decking/Masonry Block

YEAR BUILT: 1994, 2001

DOCKS: 2 with levelers

DRIVE-INS: 1 (12'x14') (8'x10')

CEILING HEIGHT: Up to 24' clear

SPRINKLERED: Main: .60 GPM/SF over 2,000 SF
Addition: 25.2K@15psi (12 ESFR Sprinklers)

LIGHTING: Metal Halide

ZONING: I-3 (Heavy Industrial)

HEAT Overhead Gas

SECURITY SYSTEM: Yes

POWER: 480/277, 1600 Amp

LEASE RATE: \$7.25/SF NNN

COMMENTS: Strategically located in the heart of the Twinsburg Industrial Park with great access to I-480, I-271 and the Ohio Turnpike.

CONTACT:
Joe Hauman, CCIM / 440.591.3723 / joe.hauman@naipvc.com
Noah Broadbent, CCIM / 440.708.8578 / noah.broadbent@naipvc.com
Jeffrey A. Calig, CCIM / 216.455.0910 / jcalig@naipvc.com

This information has been secured from sources we believe to be reliable, but we make no representations or warranties, expressed or implied, as to the accuracy of the information. References to square footage or age are approximate. Buyer must verify the information and bears all risk for any inaccuracies.