

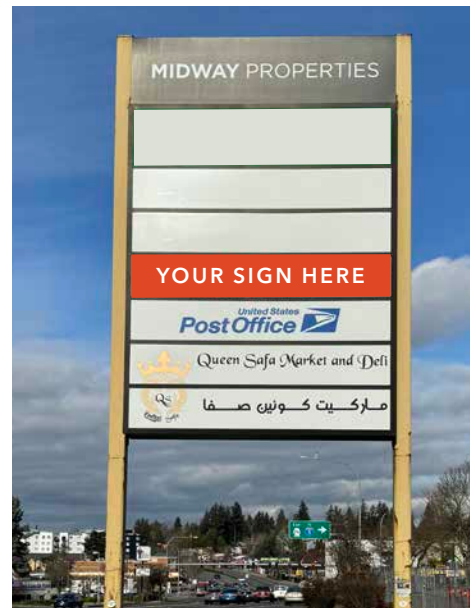
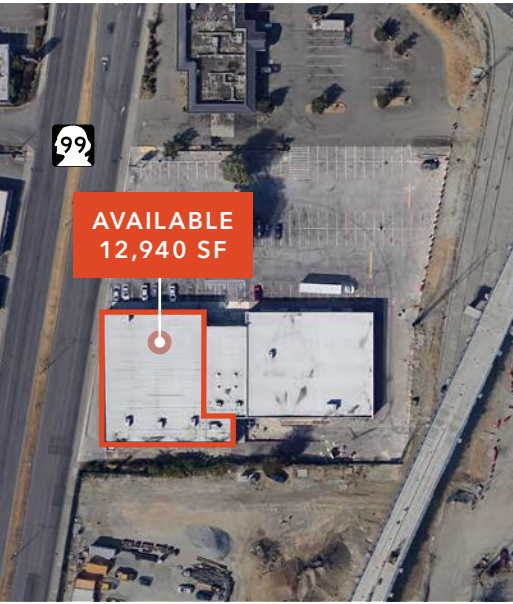
FOR LEASE

KENT MIDWAY CENTER

*8,000-12,940 SF Retail Space
Available Now in Kent, WA*

23406 PACIFIC HWY S, KENT, WA 98032

YOUR SIGN HERE

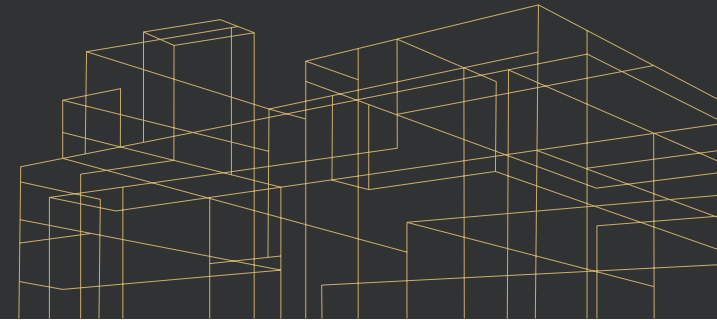


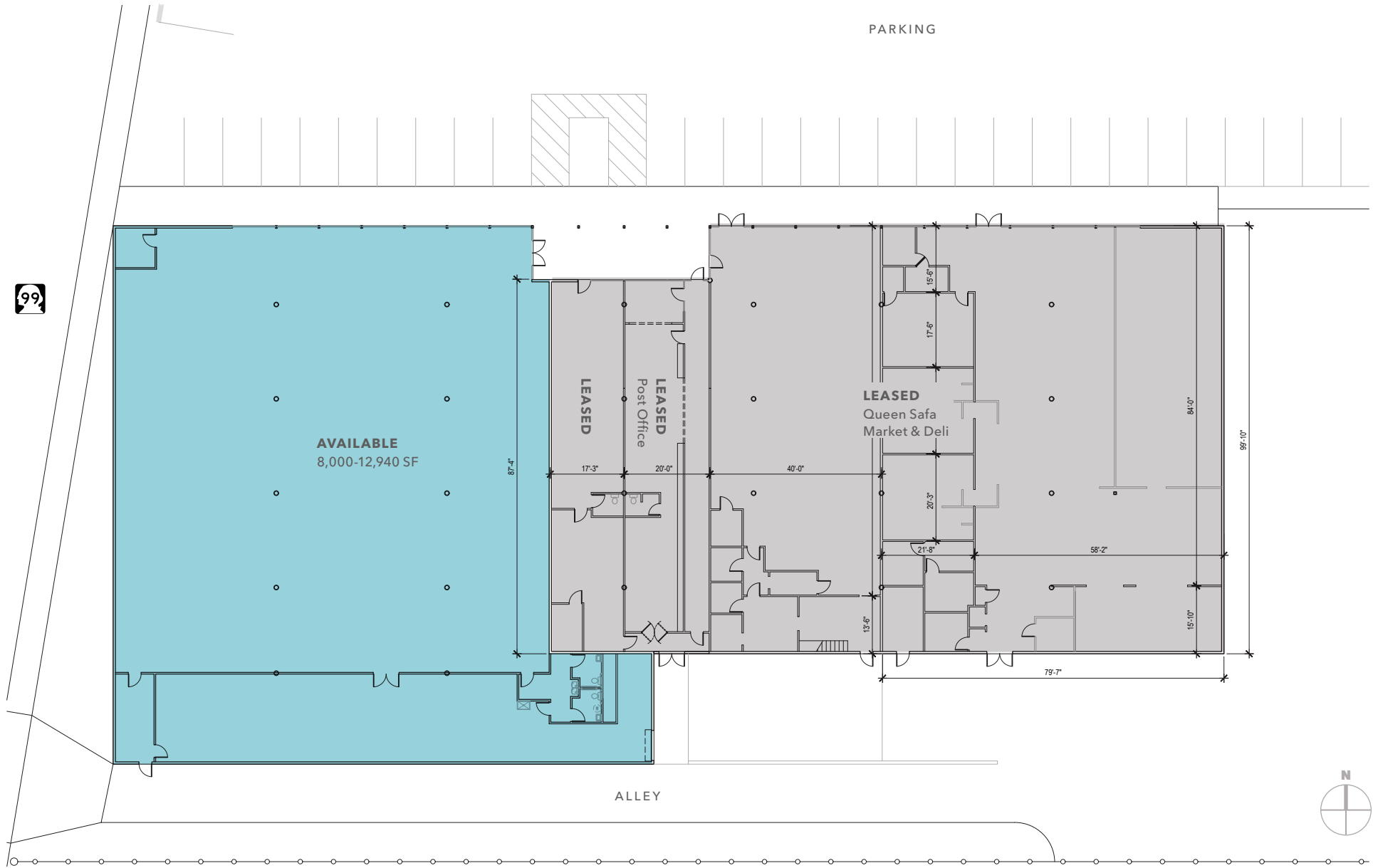
Property Overview

TOTAL BUILDING SF	28,370 SF
FORMER DOLLAR TREE	8,000-12,940 SF available
LEASE TYPE	NNN
LEASE TERM	Negotiable
PARKING	120 stalls / 4.23:1,000 SF
PARCEL NUMBER	250060-0465

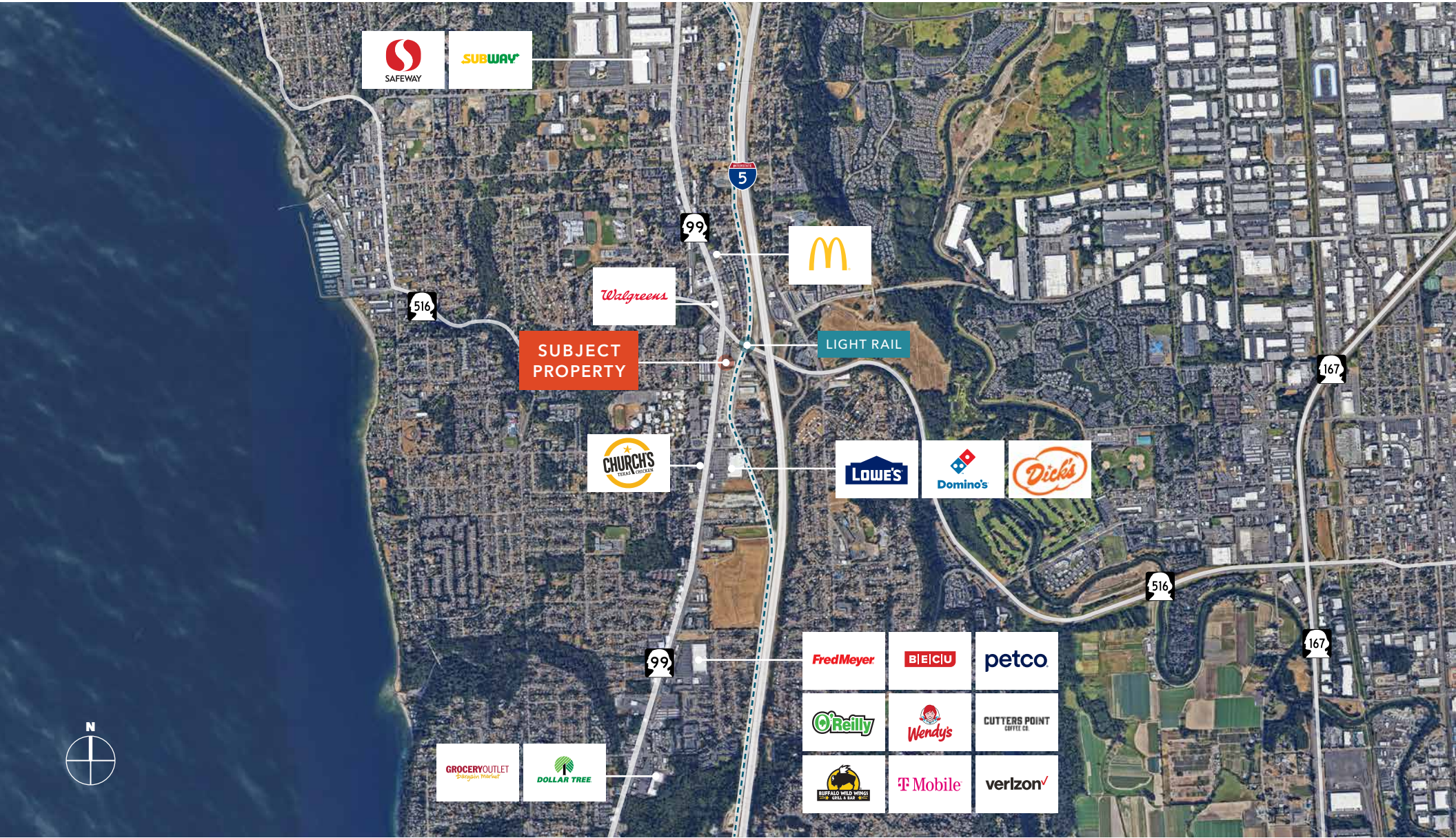
CALL

BROKERS FOR
MORE DETAILS





KENT MIDWAY CENTER



KENT DES MOINES INTERCHANGE

A reconfigured SR 516 interchange includes new ramps that provide connections between SR 509 and I-5 and non-motorized improvements, will make it easier for people who drive, walk, bike and use transit to travel through the area.

Service starts 2026

500-space garage

Kent Des Moines to University of Washington in 55 minutes

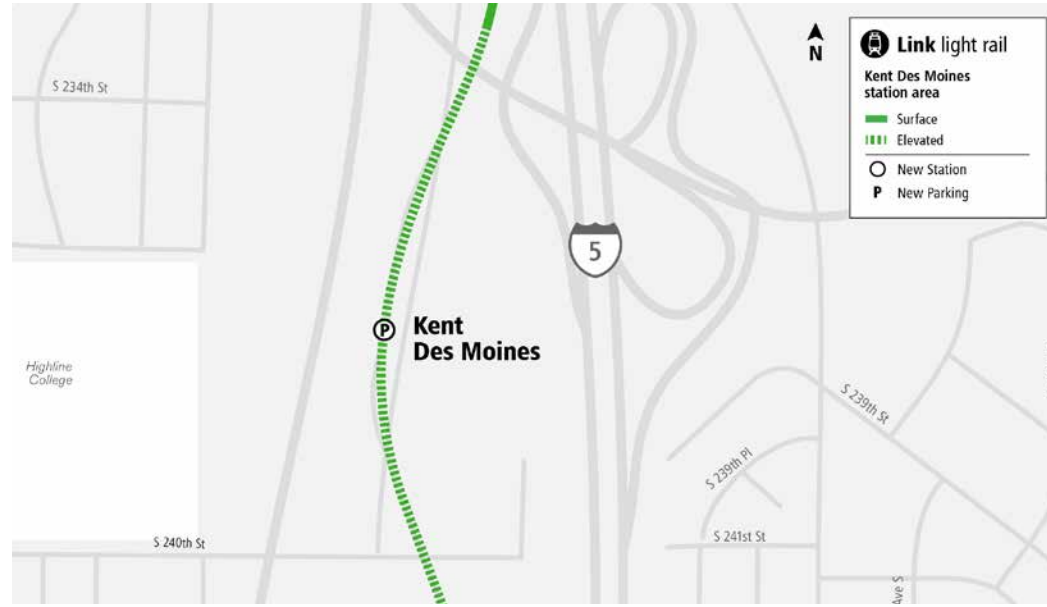
Kent Des Moines to Downtown Seattle (Westlake Station) in 45 minutes

Kent Des Moines to SeaTac Airport in 12 minutes

Estimated Completion Q3/2025



Source: Soundtransit.org





For more information, contact

BLAKE WEBER
Senior Vice President
206.898.1231
blake.weber@kidder.com

DON WHITTLES
Senior Vice President
253.208.2257
don.whittles@kidder.com

NED WHALEN
Senior Vice President
206.491.5998
ned.whalen@kidder.com

TIM WEBER
Executive Vice President
206.650.0391
tim.weber@kidder.com

KIDDER.COM

This information supplied herein is from sources we deem reliable. It is provided without any representation, warranty, or guarantee, expressed or implied as to its accuracy. Prospective Buyer or Tenant should conduct an independent investigation and verification of all matters deemed to be material, including, but not limited to, statements of income and expenses. Consult your attorney, accountant, or other professional advisor. All Kidder Mathews designs are the sole property of Kidder Mathews. Branded materials and layouts are not authorized for use by any other firm or person.

