



Old Willow Paddock Industrial Complex

1510 PADDOCK DR.
NORTHBROOK, IL 60062

BUILDING SIZE

4,818 SF

OFFICE

960 SF

DRIVE-IN DOORS

Two (2) - 12' x 14'

LEASE RATE

Subject to Lease

PROPERTY HIGHLIGHTS

- WITH TRUCK TRAILER PARKING
- Ceiling Height: 15'6"
- Power: 400 Amps
- Single Tenant Building
- Great Loading Capabilities
- Truck trailer parking optional
- LED Lighting
- Available: 7/1/2026
- 1 Mile to The Glen Town Center
- 3 Miles to I-294 / 3 Miles to I-94

For more information, please contact:

Thomas Gath

Managing Director

t 773-957-1415

thomas.gath@nmrk.com

8750 W Bryn Mawr Ave Suite 350
Chicago, IL 60631

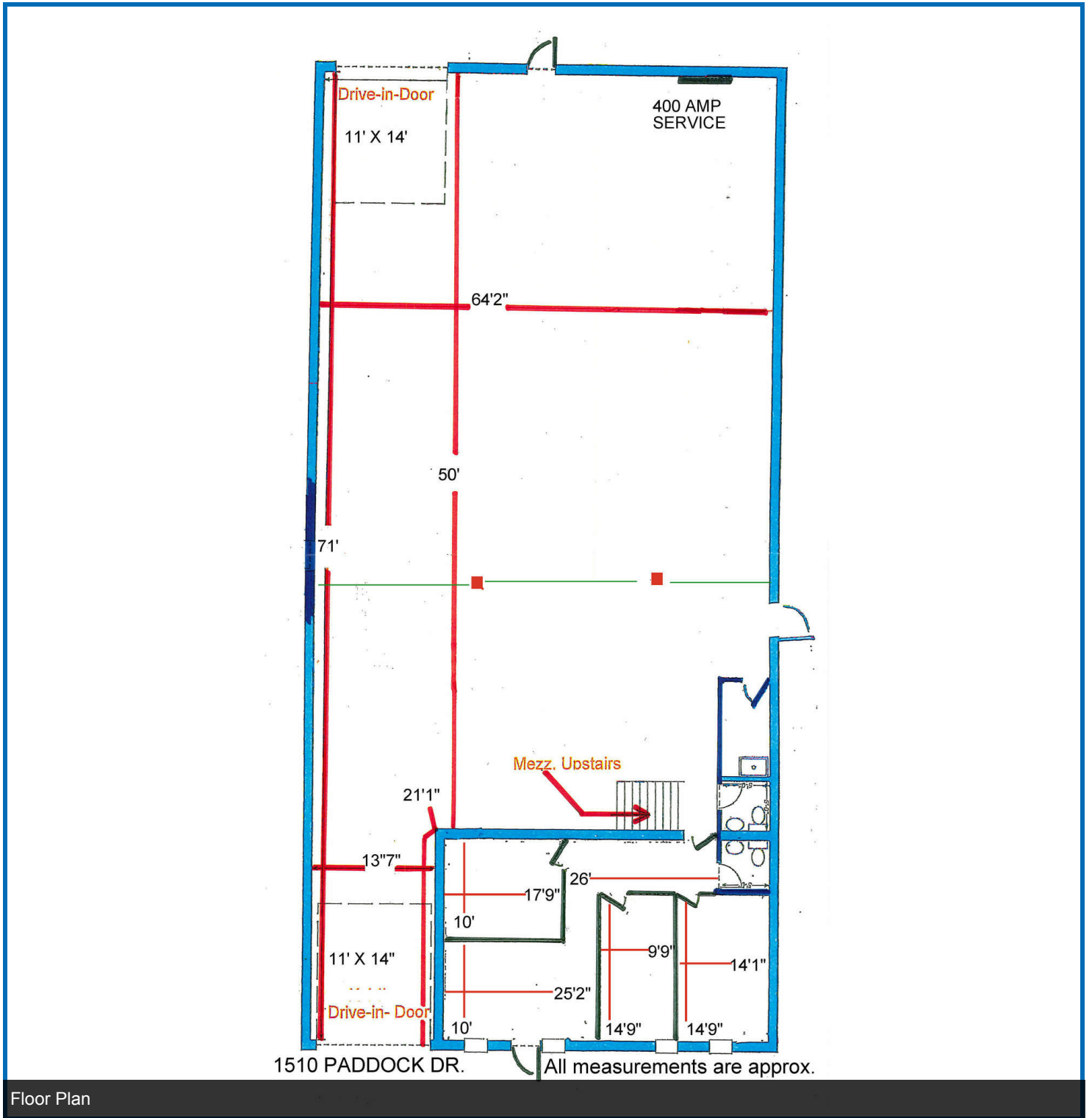


nmrk.com

NEWMARK

Licensed in Illinois as Newmark Midwest Region, LLC

The information contained herein has been obtained from sources deemed reliable but has not been verified and no guarantee, warranty or representation, either express or implied, is made with respect to such information. Terms of sale or lease and availability are subject to change or withdrawal without notice.



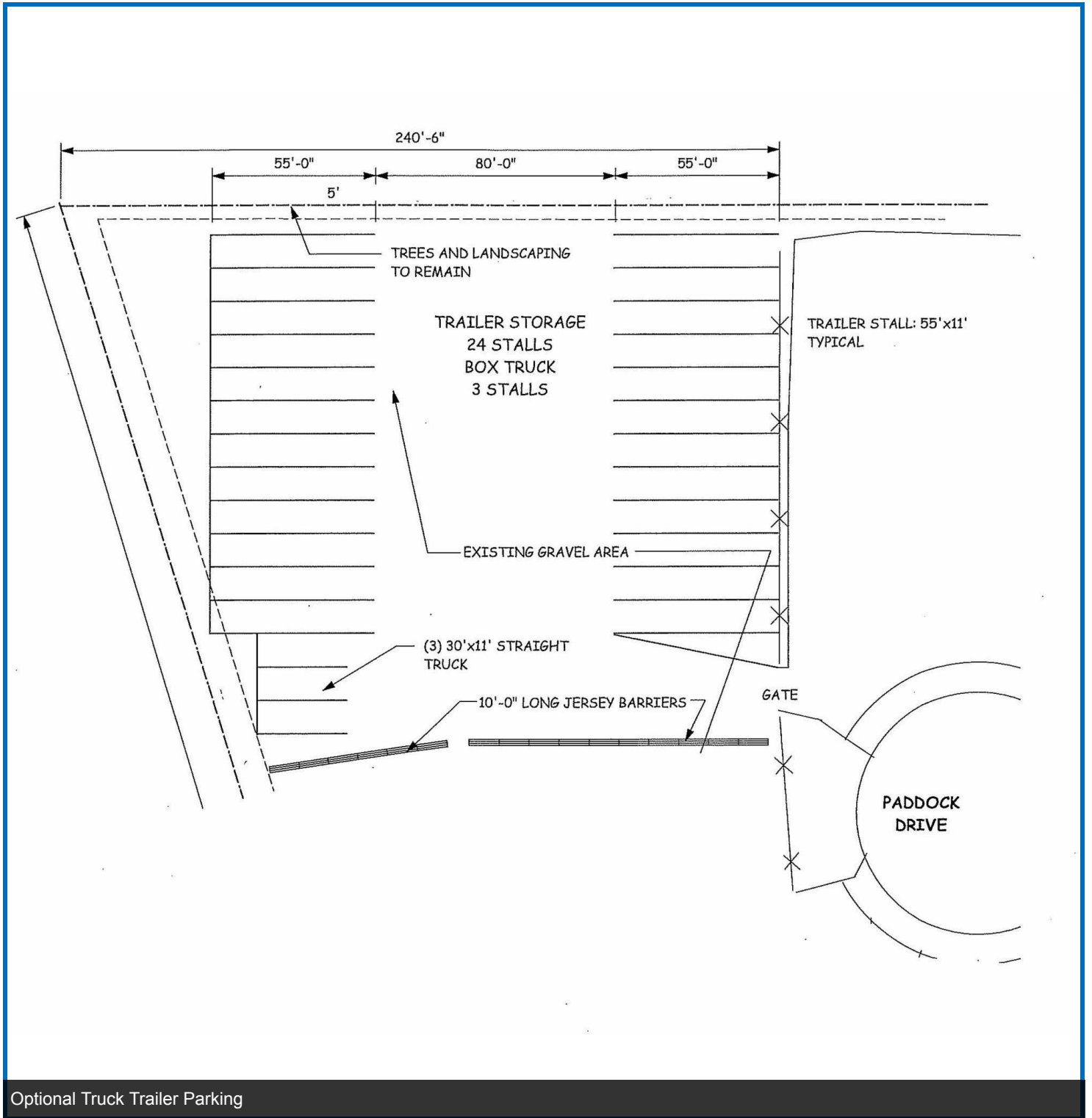
Floor Plan

Thomas Gath

Managing Director

t 773-957-1415

thomas.gath@nmrk.com



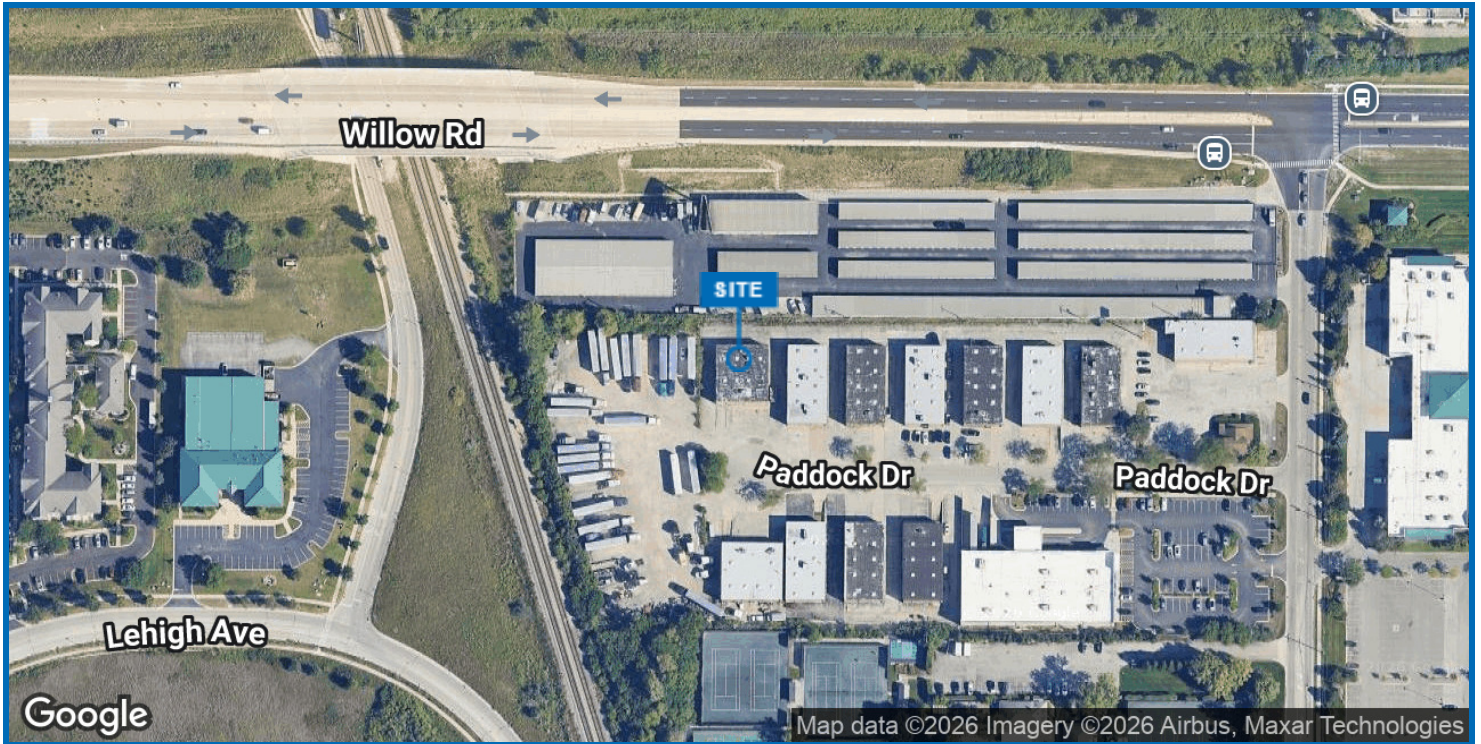
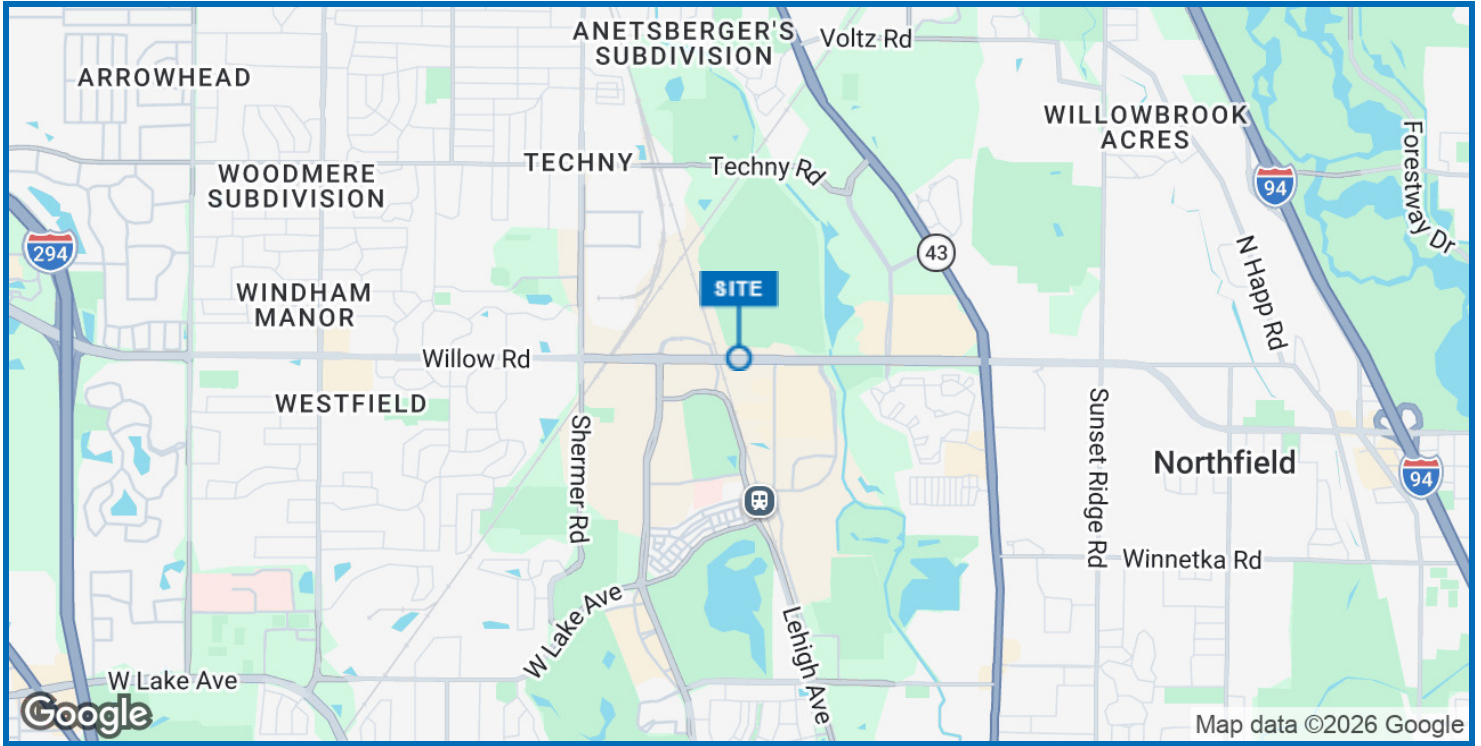
Thomas Gath

Managing Director

t 773-957-1415

thomas.gath@nmrk.com

OLD WILLOW Paddock INDUSTRIAL COMPLEX / 1510 Paddock Drive, Northbrook, IL 60062



Thomas Gath
Managing Director
t 773-957-1415
thomas.gath@nrmk.com