



PROPERTY DESCRIPTION

Centrally located in the Santa Fe district, this property offers an excellent clear height for storage, tooling, and other industrial needs in a wide open space ideal for many users. Completely remodeled in 2026, a tenant can feel confident that every aspect of this building has been recently touched and is ready for a new use.

OFFERING SUMMARY

Lease Rate:	\$3,500 per month (NNN)
Available SF:	4,000 SF
Lot Size:	6,801 SF
Zoning:	I-2

PROPERTY HIGHLIGHTS

- Central OKC Right off I-235
- 20 Ft Clear Height at center
- Private Outside Storage in rear
- 2x12 ft, 1x8 ft bay doors
- 400 Amp 3-Phase Power
- Paved approach and parking

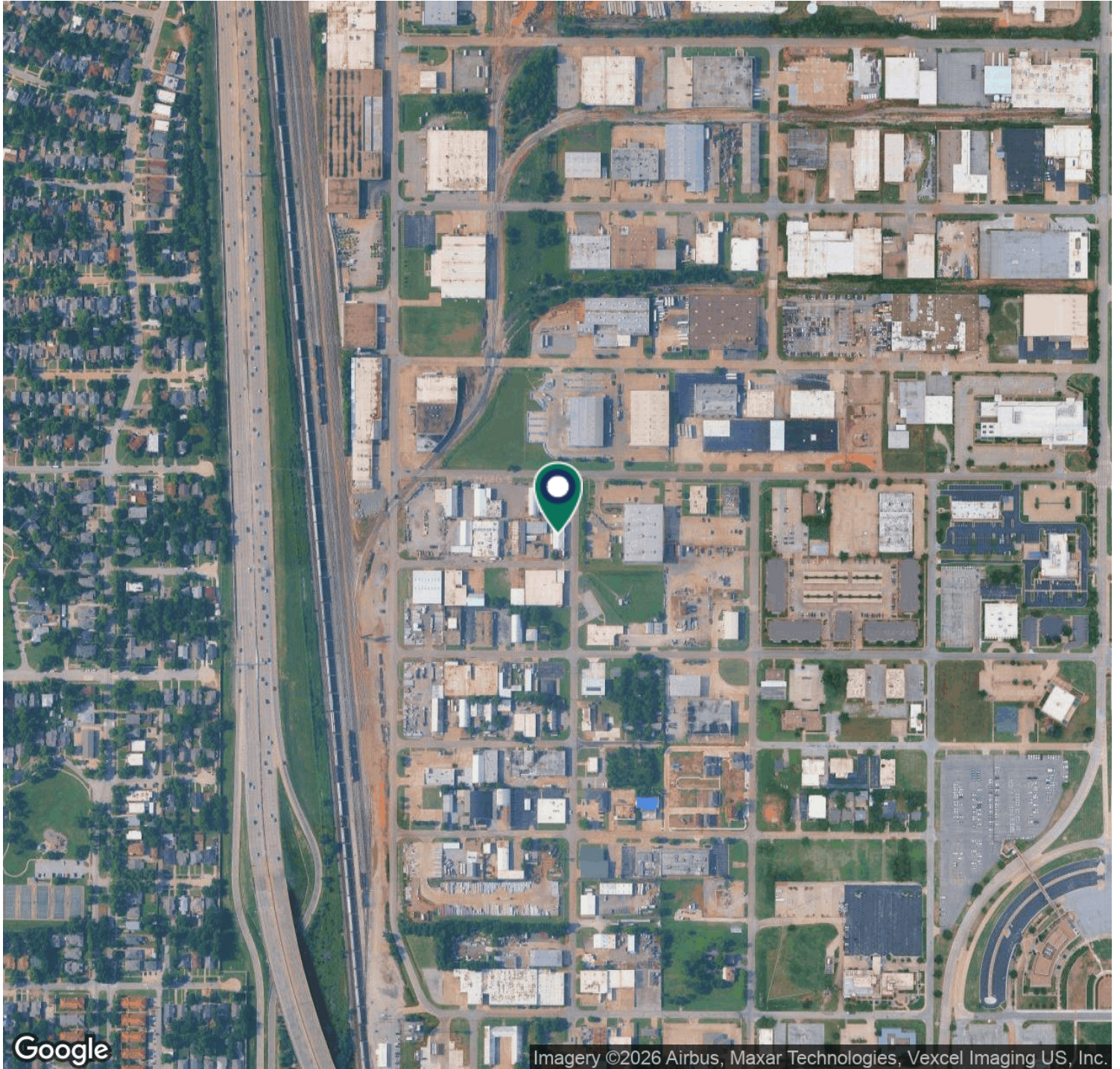
Andrew Holder
 aholder@priceedwards.com
 405.239.1273





Andrew Holder
aholder@priceedwards.com
405.239.1273

**PRICE
EDWARDS**
AND COMPANY



Andrew Holder

aholder@pricedwards.com
405.239.1273

**PRICE
EDWARDS**
AND COMPANY