

For Sale

Residential Development Opportunity

20980 Highway 25, Columbiana, AL 35051

207 Acres

\$17,250/Acre



Contact Us:

Bart Moore

Associate

205 936 4041

jbm@ironvestpartners.com

IronVest Partners

2101 1st Avenue North, Suite 200

Birmingham, AL 35203

205 598 8382

ironvestpartners.com

207-Acre Residential Development Opportunity Walkable to Downtown Columbiana

Property Overview:

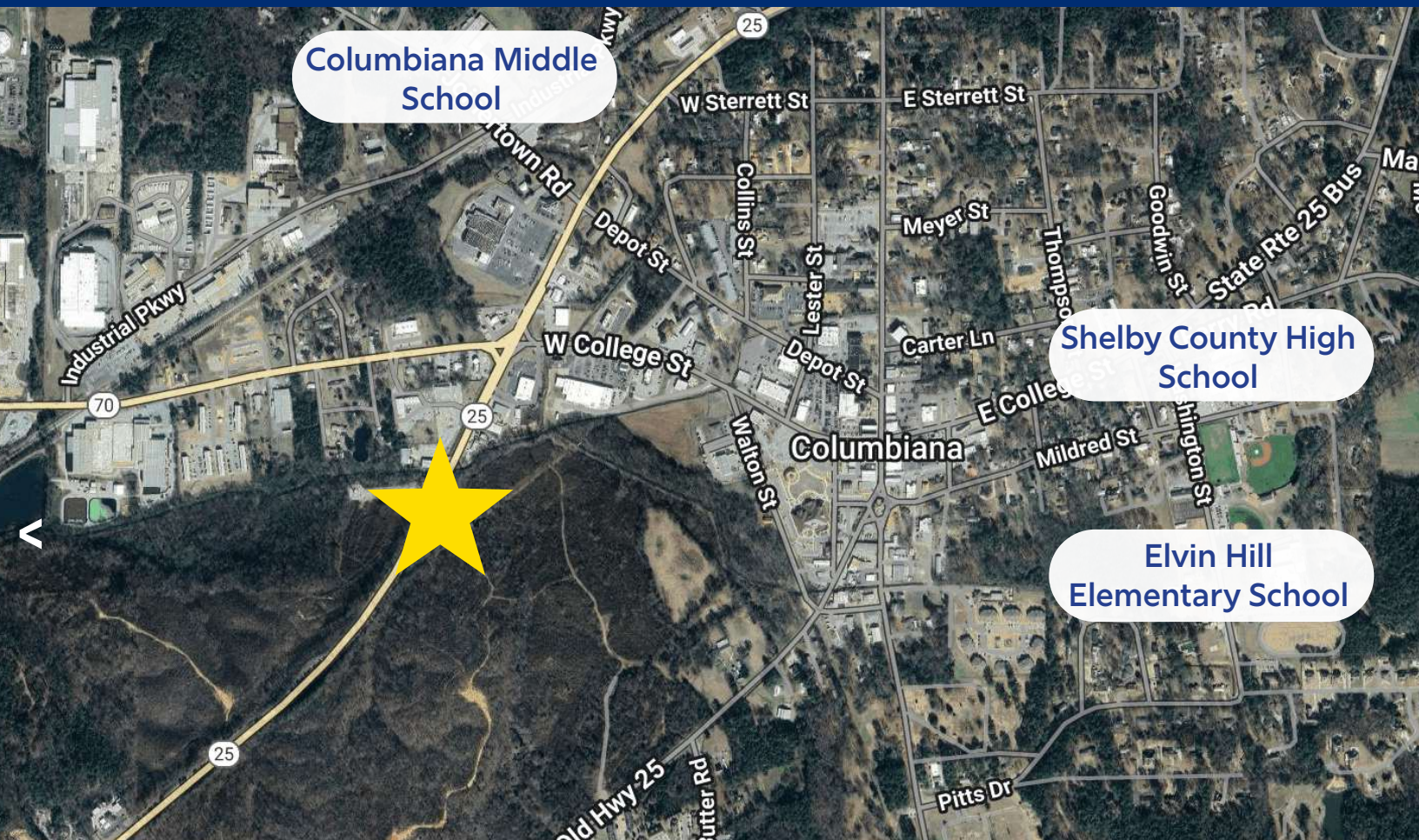
The Verchot-Handley property consists of 207 acres located in the Columbiana city limits. There have been only two owners in the past 133 years, and this property has never been on the market.

This property sits adjacent to the city, and future residents of homes built here will easily walk, ride a bike, or take a golf cart to historic downtown, Elvin Hill Elementary School, Columbiana Middle School, and Shelby County High School.

Location Highlights



Surrounding Schools

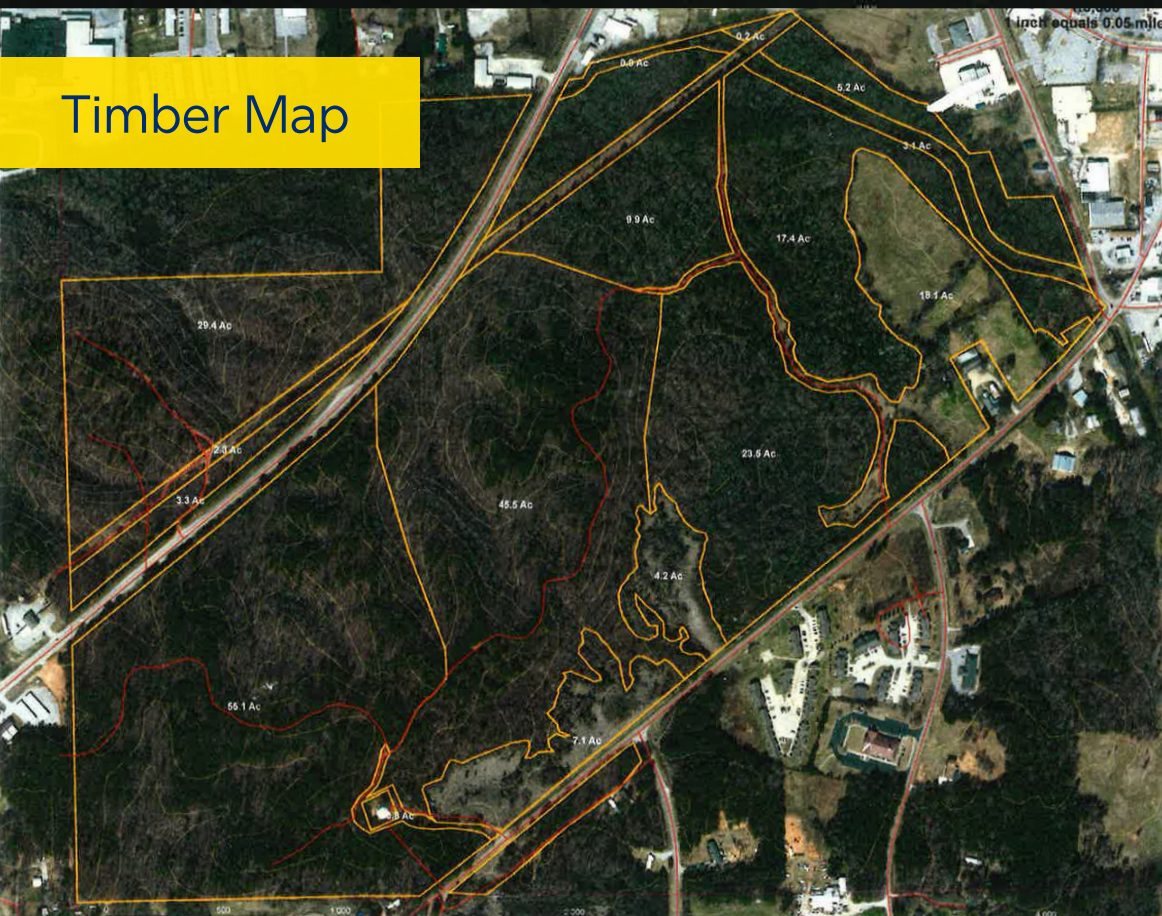


Master Plan



CONCEPTUAL MASTER PLAN
STANCIL HANDLEY PROPERTY

Timber Map



Contact Us:

Bart Moore
Associate
205 936 4041
jbm@ironvestpartners.com

IronVest Partners
2101 1st Avenue North, Suite 200
Birmingham, AL 35203
205 598 8382
ironvestpartners.com

IRONVEST
PARTNERS